

Final Plat - Shady Grove

Village of Cottage Grove

Plat consists of 62 lots, 4 Outlots, 36.47 acres.

Parks - OL 3 being dedicated to the public for park purposes.

Parkways - Buss Road dedicated to the public for road purposes, 100' of ROW width.

Expressways - N/A

Major Highways - CTH BB to the north.

Airports - Dane County Regional

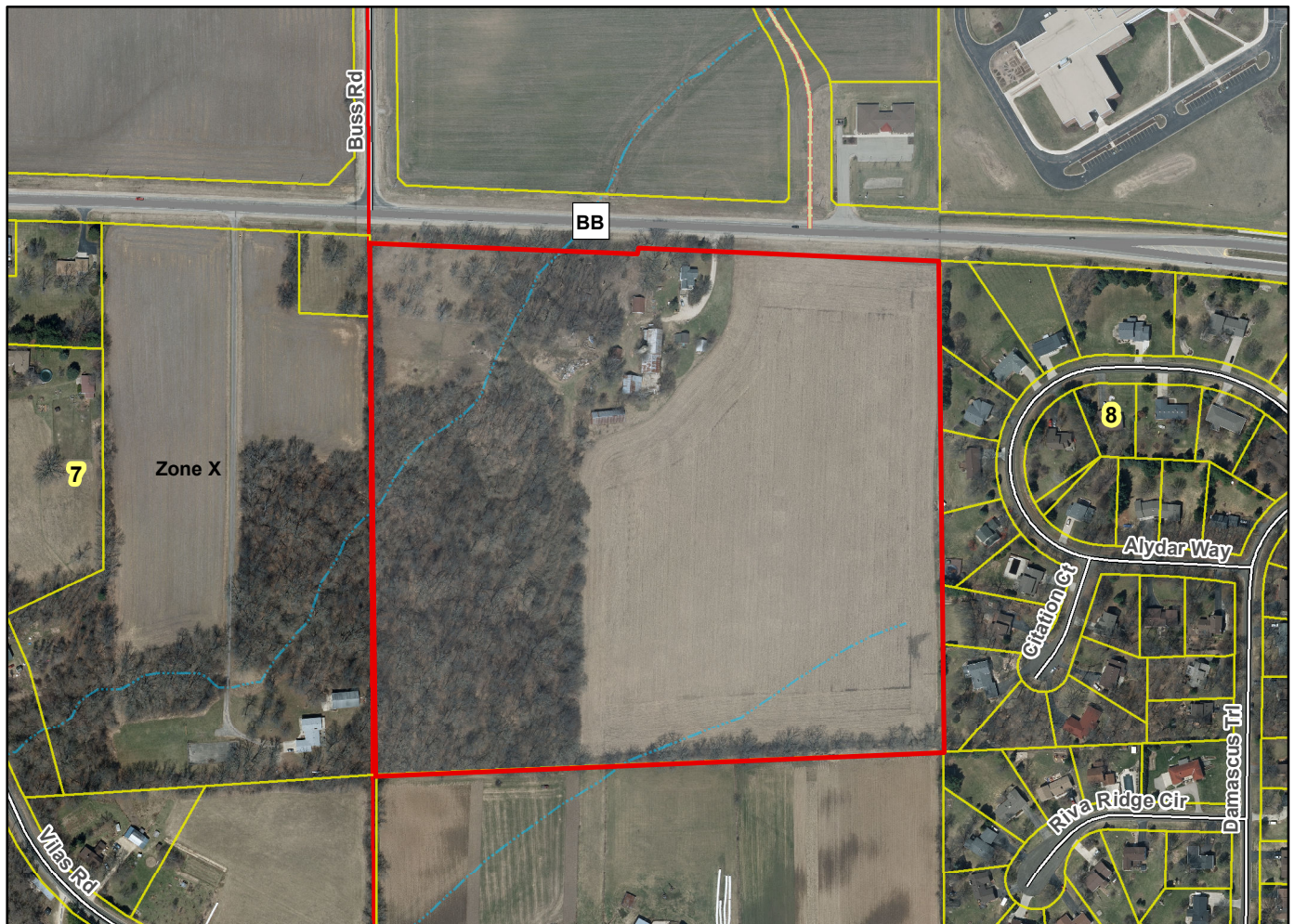
Drainage Channels - Drainage and storm sewer easements shown throughout the plat.

Schools - established

Other Development -

Outlots 1 and 2 dedicated to the public for stormwater management.

Plats of subdivisions located in all other incorporated municipalities shall be submitted to the committee, as provided by section 236.12(2)(b) of the Wis. Stats., for the purpose of determining whether the committee has any objection to the plat. The basis for any objection to any such plat shall be that the plat conflicts with parks, parkways, expressways, major highways, airports, drainage channels, schools or other planned public developments.



Motion to certify with no objections: _____, Second: _____ Vote: _____