

CONVENTIONAL SYMBOLS

SECTION LINE	---	SECTION CORNER SYMBOL		R/W MONUMENT (TO BE SET)	●
QUARTER LINE	---	SECTION CORNER MONUMENT		NON-MONUMENTED R/W POINT	○
SIXTEENTH LINE	---	GEODETIC SURVEY MONUMENT		FOUND IRON PIN (1-INCH UNLESS NOTED)	IP
NEW REFERENCE LINE	---	SIXTEENTH CORNER MONUMENT		OFF-PREMISE SIGN	
NEW R/W LINE	---	SIGN			
EXISTING R/W OR HE LINE	---				
PROPERTY LINE	---				
LOT, TIE & OTHER MINOR LINES	---				
SLOPE INTERCEPT	---				
CORPORATE LIMITS	---				
UNDERGROUND FACILITY (COMMUNICATIONS, ELECTRIC, ETC)	---				
NEW R/W (FEE OR HE) (HATCHING VARIES BY OWNER)	---				
TEMPORARY LIMITED EASEMENT AREA	---				
EASEMENT AREA (PERMANENT LIMITED OR RESTRICTED DEVELOPMENT)	---				
TRANSMISSION STRUCTURES	---				
BUILDING TO BE REMOVED	---				
BRIDGE	---				

CONVENTIONAL ABBREVIATIONS

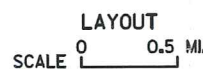
ACCESS RIGHTS	AR	POINT OF INTERSECTION	PI
ACRES	AC	PROPERTY LINE	PL
AHEAD	AH	RECORDED AS	(100')
ALUMINUM	ALUM	REEL / IMAGE	R/I
AND OTHERS	ET AL	REFERENCE LINE	R/L
BACK	BK	REMAINING	REM
BLOCK	BLK	RESTRICTIVE DEVELOPMENT EASEMENT	RDE
CENTERLINE	C/L	RIGHT	RT
CERTIFIED SURVEY MAP	CSM	RIGHT OF WAY	R/W
CONCRETE	CONC	SECTION	SEC
COUNTY	CO	SEPTIC VENT	SEPV
COUNTY TRUNK HIGHWAY	CTH	SQUARE FEET	SF
DISTANCE	DIST	STATE TRUNK HIGHWAY	STH
CORNER	COR	STATION	STA
DOCUMENT NUMBER	DOC	TELEPHONE PEDESTAL	TP
EASEMENT	EASE	TEMPORARY LIMITED EASEMENT	TLE
EXISTING	EX	TRANSPORTATION PROJECT	TPP
GAS VALVE	GV	PLAT	
GRID NORTH	GN	UNITED STATES HIGHWAY	USH
HIGHWAY EASEMENT	HE	VOLUME	V
IDENTIFICATION	ID		
LAND CONTRACT	LC		
LEFT	LT		
MONUMENT	MON		
NATIONAL GEODETIC SURVEY NUMBER	NGS		
OUTLOT	OL		
PAGE	P		
POINT OF TANGENCY	PT		
PERMANENT LIMITED EASEMENT	PLE		
POINT OF BEGINNING	POB		
POINT OF CURVATURE	PC		
POINT OF COMPOUND CURVE	PCC		

CURVE DATA

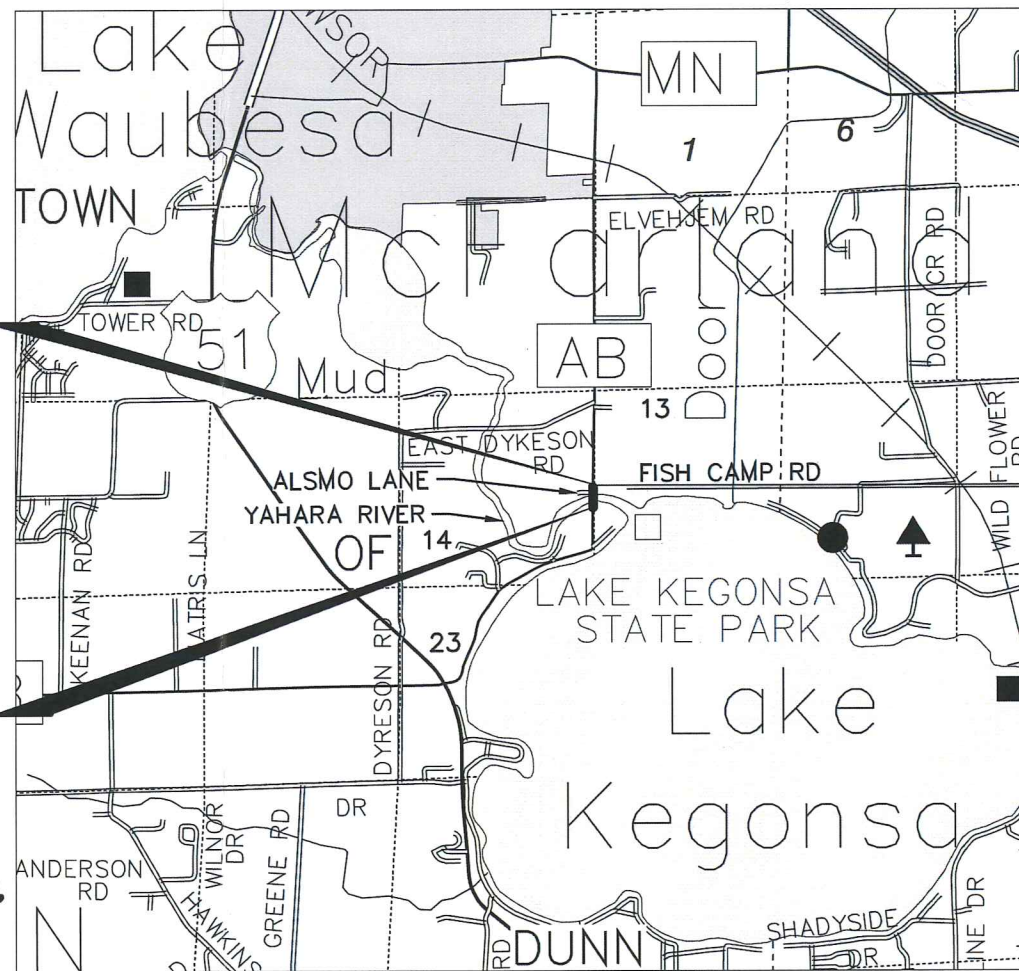
LONG CHORD	LCH
LONG CHORD BEARING	LCB
RADIUS	R
DEGREE OF CURVE	D
CENTRAL ANGLE	Δ/DELTA
LENGTH OF CURVE	L
TANGENT	T
DIRECTION AHEAD	DA
DIRECTION BACK	DB

CONVENTIONAL UTILITY SYMBOLS

WATER	---
GAS	---
TELEPHONE OVERHEAD	---
TRANSMISSION LINES	---
ELECTRIC	---
CABLE TELEVISION	---
FIBER OPTIC	---
SANITARY SEWER	---
STORM SEWER	---



TOTAL NET LENGTH OF CENTERLINE = 0.1 ML



END RELOCATION
ORDER STA.106+42.77
Y = 449,651.214
X = 852,284.916
APPROXIMATELY 3 FEET EAST OF THE EAST 1/4 CORNER OF SECTION 14, T-6-N, R-10-E, TOWN OF DUNN, DANE COUNTY, WI.

BEGIN RELOCATION
ORDER STA.101+29.00
Y = 449,137.512
X = 852,277.392
APPROXIMATELY 514 FEET SOUTH OF AND 4 FEET WEST OF THE EAST 1/4 CORNER OF SECTION 14, T-6-N, R-10-E, TOWN OF DUNN, DANE COUNTY, WI.

R/W PROJECT NUMBER 5841-00-00	SHEET NUMBER 4.01	TOTAL SHEETS 2
FEDERAL PROJECT NUMBER		
PLAT OF RIGHT-OF-WAY REQUIRED FOR USH 51 - MCFARLAND (YAHARA RIVER BRIDGE B-13-0684)		
CTH AB		DANE CO.
CONSTRUCTION PROJECT NUMBER 5841-00-70		

ACCEPTED FOR

COUNTY _____ of _____ DANE

(Date) _____ (COUNTY HIGHWAY COMMISSIONER)

ORIGINAL PLAT PREPARED BY

MSA

PROFESSIONAL SERVICES
 TRANSPORTATION • MUNICIPAL • RECREATION
 DEVELOPMENT • ENVIRONMENTAL

2901 International Lane, Suite 300 Madison, WI 53704-3133
 608-242-7779 1-800-446-0679 Fax: 608-242-5664

WISCONSIN

BRADLEY L. TISDALE
 S-2824
 WAUNAKEE
 WI

LAND SURVEYOR

10/28/16
 (Date) *Bradley L. Tisdale*
 (Professional Land Surveyor)

NOTES:

POSITIONS SHOWN ON THIS PLAT ARE WISCONSIN COORDINATE REFERENCE SYSTEM COORDINATES (WISCRS), (DANE) COUNTY, NAD 83 (2011) IN US SURVEY FEET. VALUES SHOWN ARE GRID COORDINATES, GRID BEARINGS, AND GRID DISTANCES. GRID DISTANCES MAY BE USED AS GROUND DISTANCES.

RIGHT OF WAY MONUMENTS ARE 3/4"X24" REBAR AND ARE PLACED PRIOR TO OR AT THE TIME OF LAND TITLE TRANSFER.

RIGHT OF WAY BOUNDARIES ARE DEFINED WITH COURSES OF THE PERIMETER OF THE HIGHWAY LANDS REFERENCED TO THE U.S. PUBLIC LAND SURVEY OR OTHER SURVEYS OF PUBLIC RECORD.

EXISTING RIGHT-OF-WAY IS BASED ON PREVIOUS DANE COUNTY PROJECT S0633(1), CSM #12387 AND STATE STATUTE 82.31.

SCHEDULE OF LANDS & INTERESTS REQUIRED

OWNER'S NAMES ARE SHOWN FOR REFERENCE PURPOSES ONLY AND ARE SUBJECT TO CHANGE PRIOR TO THE TRANSFER OF LAND INTERESTS TO THE COUNTY.

PARCEL NUMBER	OWNER(S)	INTEREST REQUIRED	R/W SQ FT REQUIRED			TLE SQ FT
			NEW	EXISTING	TOTAL	
1	DANE COUNTY	FEE	216	5914	6130	--
2	LOUISE LADD WHITSON, AS TRUSTEE OF THE BURTON NEIL LADD TRUST	FEE/TLE	--	8681	8681	839
3	HENMAS, INC., A WISCONSIN CORPORATION	FEE/TLE	--	7276	7276	833

UTILITY NUMBER	OWNER(S)	PARCEL AFFECTED	INTEREST REQUIRED
80	KEGONSA SANITARY DISTRICT	1 - DOC #2065832	RELEASE OF RIGHTS
81	FRONTIER COMMUNICATIONS	1 - NO EASEMENT OF RECORD	RELEASE OF RIGHTS
82	WISCONSIN POWER & LIGHT COMPANY d/b/a ALLIANT ENERGY	1 - NO EASEMENT OF RECORD	RELEASE OF RIGHTS

ALIGNMENT INFORMATION

PI = STA 100+00.00
Y = 449,008.513
X = 852,276.940

DA = N00°12'03"E

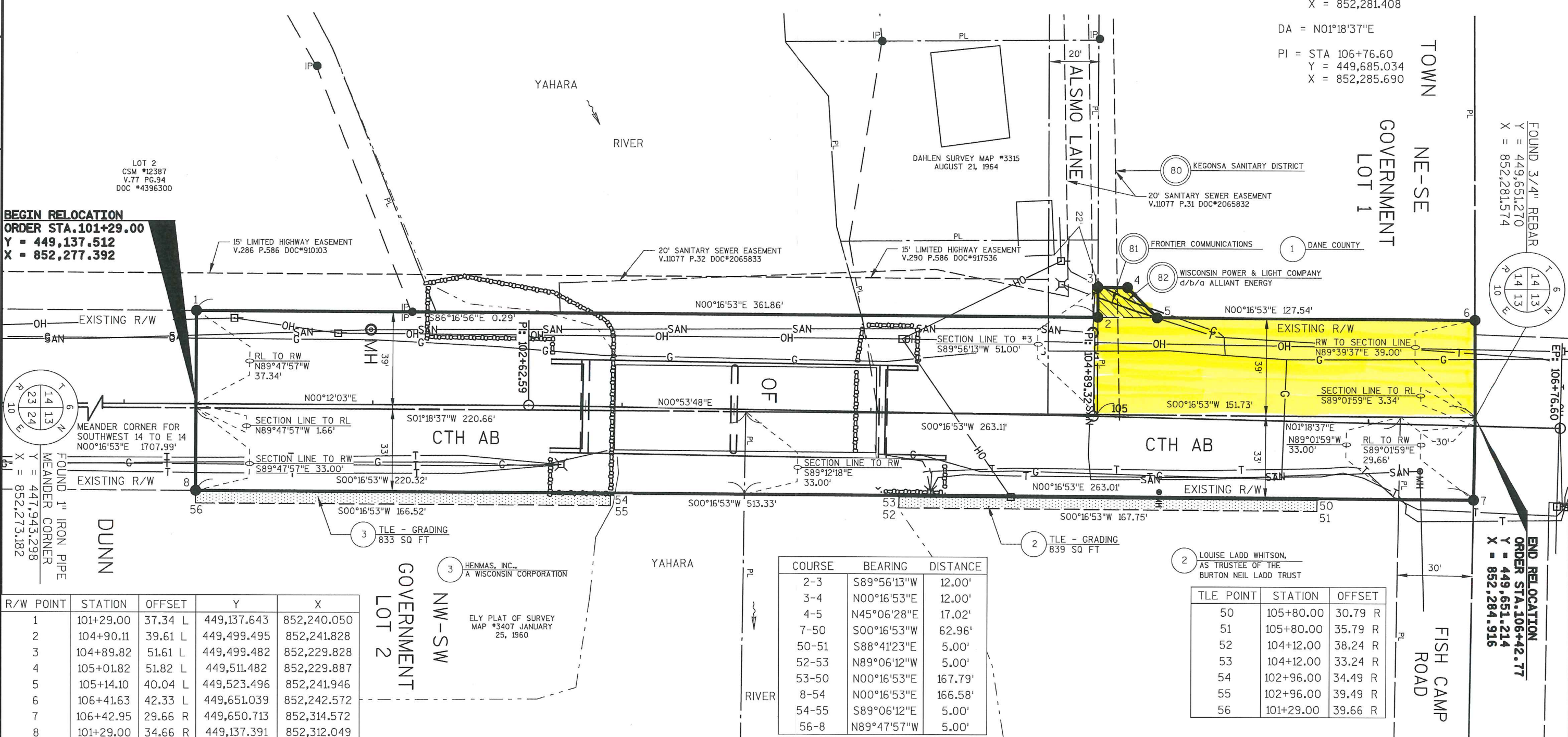
PI = STA 102+62.59
Y = 449,271.106
X = 852,277.860

DA = N00°53'48"E

PI = STA 104+89.32
Y = 449,497.800
X = 852,281.408

DA = N01°18'37"E

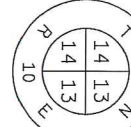
PI = STA 106+76.60
Y = 449,685.034
X = 852,285.690



BEGIN RELOCATION
ORDER STA. 101+29.00
Y = 449,137.512
X = 852,277.392

FOUND. 3/4" REBAR
Y = 449,651.270
X = 852,281.574

MEANDER CORNER FOR
SOUTHWEST 14 TO E 14
N00°16'53"E 1707.99'
FOUND 1" IRON PIPE
MEANDER CORNER
Y = 447,943.298
X = 852,273.182



R/W POINT	STATION	OFFSET	Y	X
1	101+29.00	37.34 L	449,137.643	852,240.050
2	104+90.11	39.61 L	449,499.495	852,241.828
3	104+89.82	51.61 L	449,499.482	852,229.828
4	105+01.82	51.82 L	449,511.482	852,229.887
5	105+14.10	40.04 L	449,523.496	852,241.946
6	106+41.63	42.33 L	449,651.039	852,242.572
7	106+42.95	29.66 R	449,650.713	852,314.572
8	101+29.00	34.66 R	449,137.391	852,312.049

COURSE	BEARING	DISTANCE
2-3	S89°56'13"W	12.00'
3-4	N00°16'53"E	12.00'
4-5	N45°06'28"E	17.02'
7-50	S00°16'53"W	62.96'
50-51	S88°41'23"E	5.00'
52-53	N89°06'12"W	5.00'
53-50	N00°16'53"E	167.79'
8-54	N00°16'53"E	166.58'
54-55	S89°06'12"E	5.00'
56-8	N89°47'57"W	5.00'

TLE POINT	STATION	OFFSET
50	105+80.00	30.79 R
51	105+80.00	35.79 R
52	104+12.00	38.24 R
53	104+12.00	33.24 R
54	102+96.00	34.49 R
55	102+96.00	39.49 R
56	101+29.00	39.66 R

REVISION DATE	DATE 08/10/2016	SCALE, FEET 0 20 40	HWY: CTH AB	STATE R/W PROJECT NUMBER 5841-00-00	PLAT SHEET 4.02
	GRID FACTOR		COUNTY: DANE	CONSTRUCTION PROJECT NUMBER 5841-00-70	PS&E SHEET