

# Final Plat - The Reserve

## City of Sun Prairie

Plat consists of 313 lots, 201 acres.

Parks - OL 3 shown as future park space maintained by the City of Sun Prairie

Parkways - N/A

Expressways - N/A

Major Highways - CTH C to the west.

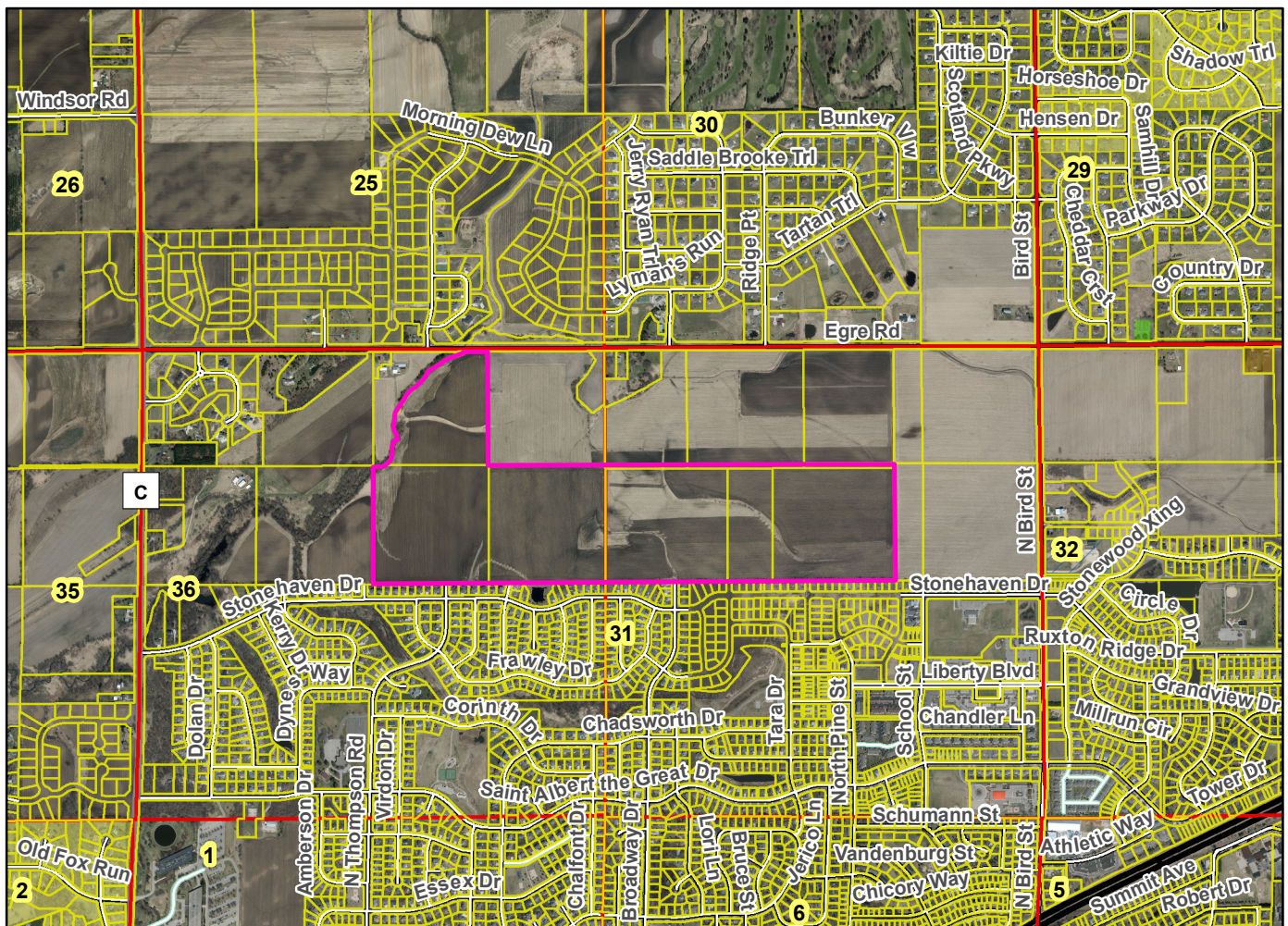
Airports - Dane County Regional

Drainage Channels -

Schools - established and proposed OL 11 describes future school site.

Other Development -

Plats of subdivisions located in all other incorporated municipalities shall be submitted to the committee, as provided by section 236.12(2)(b) of the Wis. Stats., for the purpose of determining whether the committee has any objection to the plat. The basis for any objection to any such plat shall be that the plat conflicts with parks, parkways, expressways, major highways, airports, drainage channels, schools or other planned public developments.



Motion to certify with no objections: \_\_\_\_\_, Second: \_\_\_\_\_ Vote: \_\_\_\_\_