

TEMPORARY LIMITED EASEMENT

Exempt from filing transfer form [s. 77.21(1), 77.22(1) Wis. Stats.]
lpa1577 04/2016 (replaces lpa1577 10/2011)

THIS EASEMENT, made by **Dane County**, GRANTOR, conveys a temporary limited easement as described below to the **City of Verona**, GRANTEE, for the sum of **One Dollar and other good and valuable consideration** dollars (**\$1.00**) for the purpose of **constructing an entrance**.

Any person named in this conveyance may make an appeal from the amount of compensation within six months after the date of recording of this conveyance as set forth in s. 32.05(2a) Wisconsin Statutes. For the purpose of any such appeal, the amount of compensation stated on the conveyance shall be treated as the award, and the date the conveyance is recorded shall be treated as the date of taking and the date of evaluation.

Other persons having an interest of record in the property: **None**

LEGAL DESCRIPTION IS ATTACHED AND MADE A PART OF THIS DOCUMENT BY REFERENCE.

This space is reserved for recording data

Return to
MSA Professional Services, Inc.
Attn: Beth Steinhauer
2901 International Lane, Suite 300
Madison, WI 53704

Parcel Identification Number/Tax Key Number
286/0608-143-8003-2

Dane County

Signature Date

Print Name

Signature Date

Print Name

Signature Date

Print Name

Signature Date

Print Name

Date

State of Wisconsin)
) ss.
County)

On the above date, this instrument was acknowledged before me by the named person(s).

Signature, Notary Public, State of Wisconsin

Print or Type Name, Notary Public, State of Wisconsin

Date Commission Expires

Project ID
5796-00-03

This instrument was drafted by
Beth Steinhauer, MSA Professional Services, Inc.

Parcel No.
2

LEGAL DESCRIPTION

A Temporary Limited Easement (TLE) for the right to construct an entrance, including the right to operate necessary equipment thereon and the right of ingress and egress, as long as required for such public purpose, including the right to preserve, protect, remove, or plant thereon any vegetation that the highway authorities may deem necessary or desirable. This easement is to terminate on date the construction of this project is completed.

Said easement consists of the owner's interest in the following described tract of land in the NE $\frac{1}{4}$ of the SW $\frac{1}{4}$ of Section 14, T06N, R08E, located within the City of Verona, Dane County, Wisconsin.

Commencing at an aluminum monument at the South $\frac{1}{4}$ corner of said Section 14;
Thence N00°02'08"E, 1682.14 feet along the North-South $\frac{1}{4}$ line of said Section 14;
Thence N82°53'52"W, 24.87 feet to a point on the west existing right-of-way line of Old CTH PB;
Thence N05°01'23"E, 130.64 feet along said west existing right-of-way line to the **Point of Beginning**;

Thence N82°21'22"W, 16.28 feet;
Thence N07°38'38"E, 45.00 feet;
Thence S82°21'22"E, 14.22 feet;
Thence S05°01'23"W, 45.05 feet to the **Point of Beginning**.

Said easement contains **0.016 acres** more or less.

Parcel 2

R/W PROJECT NUMBER 5795-00-03	SHEET NUMBER 4.01	TOTAL SHEETS 2
PLAT OF RIGHT OF WAY REQUIRED FOR TOWN OF VERONA, OLD CTH PB (BADGER MILL CREEK BRIDGE B-13-0683)		
TOWN ROAD CONSTRUCTION PROJECT NUMBER 5795-00-73	DANE COUNTY	

NOTES:
 POSITIONS SHOWN ON THIS PLAT ARE WISCONSIN COORDINATE REFERENCE SYSTEM COORDINATES (WISCRS, DANE COUNTY, MADISON11) IN US SURVEY FEET. VALUES SHOWN ARE GRID COORDINATES, GRID BEARINGS, AND GRID DISTANCES. GRID DISTANCES MAY BE USED AS GROUND DISTANCES.
 RIGHT-OF-WAY MONUMENTS ARE TYPE 2 (24" x 24" IRON REBAR WEIGHING 1.50 LBS./LIN. FT.) AND ARE PLACED PHON TO OR AT THE LINE OF LAND THINNESS.
 RIGHT OF WAY BOUNDARIES ARE DEFINED WITH COURSES OF THE PERIMETER OF THE HIGHWAY LANDS REFERENCED TO THE U.S. PUBLIC LAND SURVEY OR OTHER SURVEYS OF PUBLIC RECORD.
 DIMENSIONS FOR THE NEW RIGHT OF WAY IS MEASURED ALONG AND PERPENDICULAR TO THE REFERENCE LINE.
 A HIGHWAY EASEMENT (H.E.) IS AN EASEMENT FOR HIGHWAY PURPOSES, AS LONG AS SO LONG, INCLUDING THE RIGHT TO RESERVE, PROTECT, REMOVE, OR PLANT THEREON ANY VEGETATION THAT THE HIGHWAY AUTHORITIES MAY DEEM NECESSARY OR DESIRABLE.
 A TEMPORARY LIMITED DASHMANT (T.L.D.) IS A RIGHT FOR CONSTRUCTION PURPOSES, AS DEFINED HEREIN, INCLUDING THE RIGHT TO AND/OR EXISTING OCCUPATIONAL LINES. THIS PLAT MAY NOT BE A TRUE REPRESENTATION OF EXISTING PROPERTY LINES, INCLUDING RIGHT-OF-WAY, AND SHOULD NOT BE USED AS A SUBSTITUTE FOR AN ACCURATE FIELD SURVEY.
 EXISTING RIGHT OF WAY FOR OLD CTH PB SHOWN HEREON IS DETERMINED FROM PREVIOUS PROJECT 1201-04-21.
 EXISTING ACCESS CONTROL ALONG OLD CTH PB AND MILITARY RIDGE RECREATIONAL TRAIL SHOWN HEREON IS ESTABLISHED FROM PREVIOUS PROJECT 1201-04-21.

CONVENTIONAL SYMBOLS

SECTION LINE	SECTION CORNER	SECTION CENTER	SECTION MONUMENT	SECTION CORNER MONUMENT	SECTION CENTER MONUMENT	SECTION CORNER MONUMENT	SECTION CENTER MONUMENT	SECTION CORNER MONUMENT	SECTION CENTER MONUMENT
QUARTER LINE	QUARTER CORNER	QUARTER CENTER	QUARTER MONUMENT	QUARTER CORNER MONUMENT	QUARTER CENTER MONUMENT	QUARTER CORNER MONUMENT	QUARTER CENTER MONUMENT	QUARTER CORNER MONUMENT	QUARTER CENTER MONUMENT
NEW REFERENCE LINE	NEW REFERENCE CORNER	NEW REFERENCE CENTER	NEW REFERENCE MONUMENT	NEW REFERENCE CORNER MONUMENT	NEW REFERENCE CENTER MONUMENT	NEW REFERENCE CORNER MONUMENT	NEW REFERENCE CENTER MONUMENT	NEW REFERENCE CORNER MONUMENT	NEW REFERENCE CENTER MONUMENT
EXISTING R/W OR R/L LINE	EXISTING R/W OR R/L CORNER	EXISTING R/W OR R/L CENTER	EXISTING R/W OR R/L MONUMENT	EXISTING R/W OR R/L CORNER MONUMENT	EXISTING R/W OR R/L CENTER MONUMENT	EXISTING R/W OR R/L CORNER MONUMENT	EXISTING R/W OR R/L CENTER MONUMENT	EXISTING R/W OR R/L CORNER MONUMENT	EXISTING R/W OR R/L CENTER MONUMENT
LOT, TRACED BY DEED	LOT CORNER	LOT CENTER	LOT MONUMENT	LOT CORNER MONUMENT	LOT CENTER MONUMENT	LOT CORNER MONUMENT	LOT CENTER MONUMENT	LOT CORNER MONUMENT	LOT CENTER MONUMENT
SCOTT'S INTEREST	SCOTT'S CORNER	SCOTT'S CENTER	SCOTT'S MONUMENT	SCOTT'S CORNER MONUMENT	SCOTT'S CENTER MONUMENT	SCOTT'S CORNER MONUMENT	SCOTT'S CENTER MONUMENT	SCOTT'S CORNER MONUMENT	SCOTT'S CENTER MONUMENT
CONTRACTOR'S LIMITS	CONTRACTOR'S CORNER	CONTRACTOR'S CENTER	CONTRACTOR'S MONUMENT	CONTRACTOR'S CORNER MONUMENT	CONTRACTOR'S CENTER MONUMENT	CONTRACTOR'S CORNER MONUMENT	CONTRACTOR'S CENTER MONUMENT	CONTRACTOR'S CORNER MONUMENT	CONTRACTOR'S CENTER MONUMENT
UNDERGROUND FACILITY (FURNACE, CABLE, PIPE, ETC.)	UNDERGROUND CORNER	UNDERGROUND CENTER	UNDERGROUND MONUMENT	UNDERGROUND CORNER MONUMENT	UNDERGROUND CENTER MONUMENT	UNDERGROUND CORNER MONUMENT	UNDERGROUND CENTER MONUMENT	UNDERGROUND CORNER MONUMENT	UNDERGROUND CENTER MONUMENT
NEW R/W (BY DEED OR BY CONTRACT)	NEW R/W CORNER	NEW R/W CENTER	NEW R/W MONUMENT	NEW R/W CORNER MONUMENT	NEW R/W CENTER MONUMENT	NEW R/W CORNER MONUMENT	NEW R/W CENTER MONUMENT	NEW R/W CORNER MONUMENT	NEW R/W CENTER MONUMENT
EXISTING R/W (BY DEED OR BY CONTRACT)	EXISTING R/W CORNER	EXISTING R/W CENTER	EXISTING R/W MONUMENT	EXISTING R/W CORNER MONUMENT	EXISTING R/W CENTER MONUMENT	EXISTING R/W CORNER MONUMENT	EXISTING R/W CENTER MONUMENT	EXISTING R/W CORNER MONUMENT	EXISTING R/W CENTER MONUMENT
TEMPORARILY LIMITED OR PERMANENT LIMITED OR RES. RIGHT OF WAY (BY DEED OR BY CONTRACT)	TEMPORARILY LIMITED CORNER	TEMPORARILY LIMITED CENTER	TEMPORARILY LIMITED MONUMENT	TEMPORARILY LIMITED CORNER MONUMENT	TEMPORARILY LIMITED CENTER MONUMENT	TEMPORARILY LIMITED CORNER MONUMENT	TEMPORARILY LIMITED CENTER MONUMENT	TEMPORARILY LIMITED CORNER MONUMENT	TEMPORARILY LIMITED CENTER MONUMENT
TRANSVERSE STRUCTURES	TRANSVERSE CORNER	TRANSVERSE CENTER	TRANSVERSE MONUMENT	TRANSVERSE CORNER MONUMENT	TRANSVERSE CENTER MONUMENT	TRANSVERSE CORNER MONUMENT	TRANSVERSE CENTER MONUMENT	TRANSVERSE CORNER MONUMENT	TRANSVERSE CENTER MONUMENT
TO BE REMOVED	TO BE REMOVED CORNER	TO BE REMOVED CENTER	TO BE REMOVED MONUMENT	TO BE REMOVED CORNER MONUMENT	TO BE REMOVED CENTER MONUMENT	TO BE REMOVED CORNER MONUMENT	TO BE REMOVED CENTER MONUMENT	TO BE REMOVED CORNER MONUMENT	TO BE REMOVED CENTER MONUMENT
BRIDGE	BRIDGE CORNER	BRIDGE CENTER	BRIDGE MONUMENT	BRIDGE CORNER MONUMENT	BRIDGE CENTER MONUMENT	BRIDGE CORNER MONUMENT	BRIDGE CENTER MONUMENT	BRIDGE CORNER MONUMENT	BRIDGE CENTER MONUMENT

CONVENTIONAL ABBREVIATIONS

ACCESS RIGHTS	ADJACENT	ALUMINUM	AND OTHERS	BACK	BLOCK	CENTRINE	CENTRINE SURVEY MAP	CONCRETE	COUNTY	COUNTY TRUNK HIGHWAY	CORNER	CORNER	EASEMENT	EXISTING	GAS VALVE	GRID NORTH	HIGHWAY EASEMENT	LAND CONTRACT	LEFT	MONUMENT	NATIONAL GEODETIC SURVEY	NUMBER	OUTLOT	POINT OF ANGLE	PERMANENT LIMITED EASEMENT	POINT OF BEGINNING	POINT OF CURVATURE	POINT OF COMPOUND CURVE
PI	PL	BL	RO	RE	BLK	CH	CH	CONC	CO	CTH	CR	CR	E	EX	GV	GN	HE	LC	LD	LT	MGN	NO	OL	PA	PL	POB	POC	

CONVENTIONAL ABBREVIATIONS

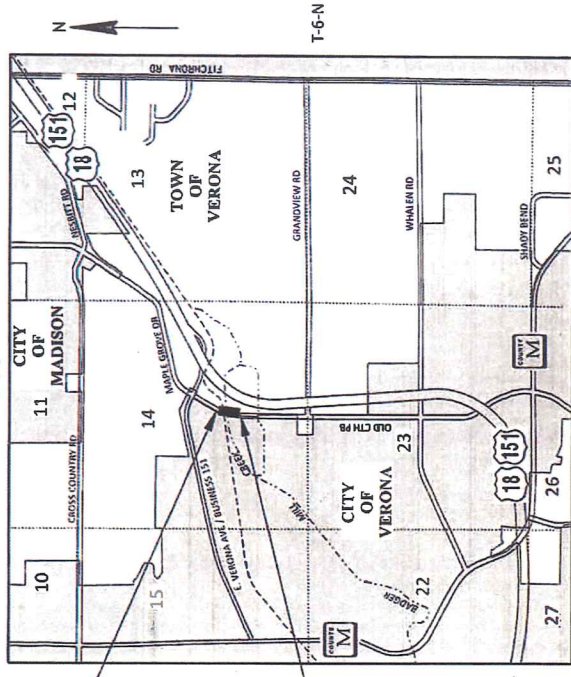
POINT OF INTERSECTION	PROPERTY LINE	REEL / IMAGE	REFERENCE LINE	REMAINING	RESTRICTIVE DEVELOPMENT	EASEMENT	RIGHT OF WAY	SECTION	SEPTIC TANK	SQUARE FEET	STATE TRUNK HIGHWAY	STATION	TIP	TILE	TIP	TRANSPORTATION PROJECT	PLAT	UNITED STATES HIGHWAY	VOLUME								
PI	PL	BL	RO	RE	BLK	CH	CH	CONC	CO	CTH	CR	CR	E	EX	GV	GN	HE	LC	LD	LT	MGN	NO	OL	PA	PL	POB	POC

CURVE DATA

LEANS CURVE	LEANS CURVE BEARING	LEANS CURVE RADIUS	LEANS CURVE CHORD	LEANS CURVE CHORD BEARING	LEANS CURVE CHORD BEARING	LEANS CURVE CHORD BEARING	LEANS CURVE CHORD BEARING	LEANS CURVE CHORD BEARING	LEANS CURVE CHORD BEARING
LCB	LCB	R	LCB	LCB	LCB	LCB	LCB	LCB	LCB

CONVENTIONAL UTILITY SYMBOLS

WATER	GAS	SEWER	TELEPHONE	CABLE TELEVISION	OPTIC FIBER	STEEL PIPE
W	G	S	T	C	O	SP



END RELOCATION ORDER
 STA. 18+09.08
 Y = 482,575.400
 X = 452,473.407
 LOCATED 595.24 FEET SOUTH AND 103.24 FEET EAST OF THE CENTER OF SECTION 14, TOWNSHIP 06 NORTH, RANGE 08 EAST.

BEGIN RELOCATION ORDER
 STA. 14+15.00
 Y = 452,473.407
 X = 452,473.407
 LOCATED 1678.00 FEET NORTH AND 28.50 FEET EAST OF THE SOUTH 1/4 CORNER OF SECTION 14, TOWNSHIP 06 NORTH, RANGE 08 EAST.

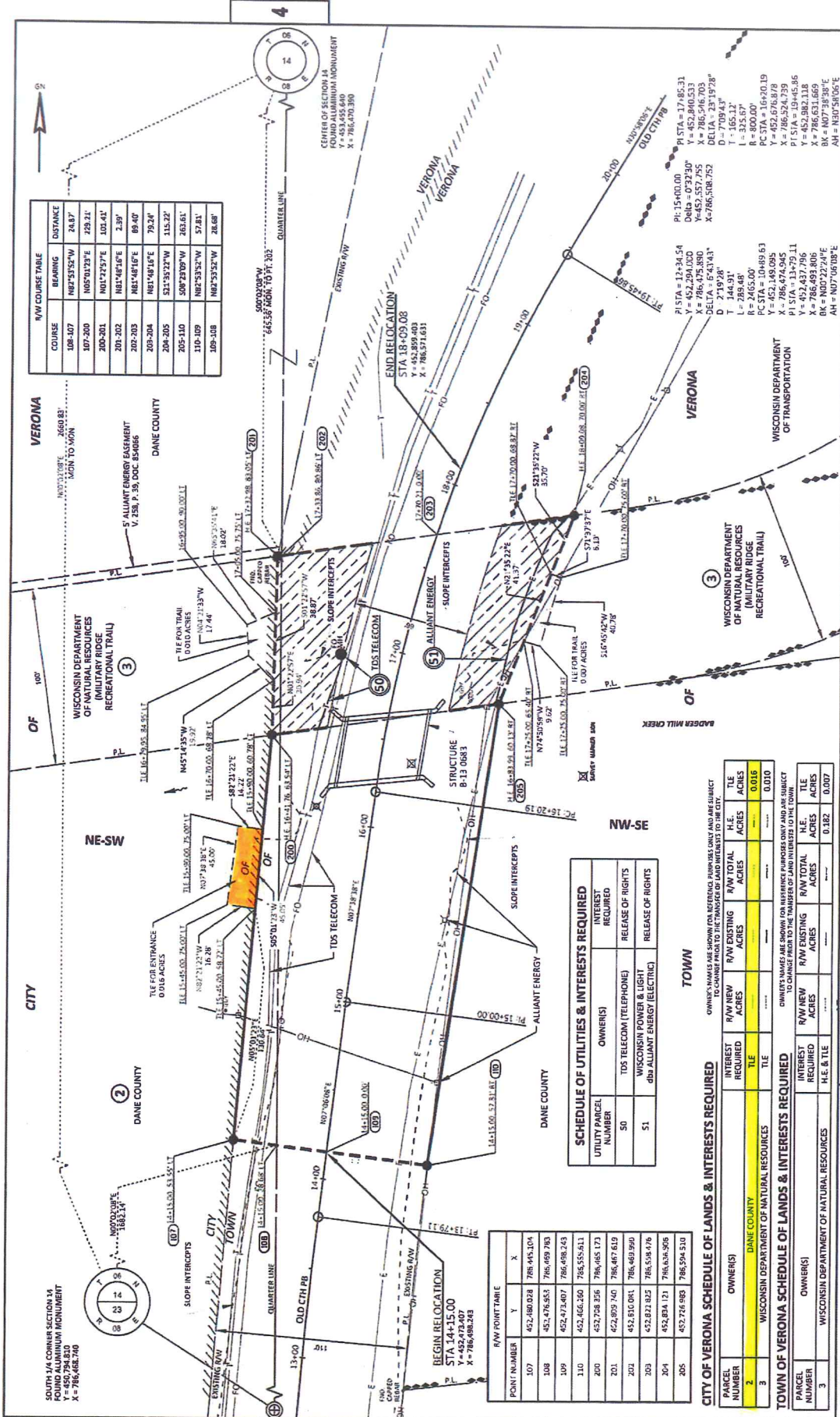
APPROVED
 CITY OF VERONA
 DATE 10/2/10
 TOWN OF VERONA
 DATE 10/3/10
 PLAT PREPARED BY
 AVRES ASSOCIATES

THE SURVEY IS PREPARED AT THE REQUEST OF THE CITY OF VERONA. THE FIELD SURVEY WAS PERFORMED IN DECEMBER, 2010. THE SURVEYOR HAS EXERCISED DUE CARE AND SKILL TO ACCURATE TO THE BEST OF HIS KNOWLEDGE AND BELIEF.



JAMES L. REID
 10/02/2017
 DATE

SCALE 0 1/2 MILE
 LAYOUT
 TOTAL NET LENGTH OF CENTERLINE = 0.075 MI.



R/W COURSE TABLE

COURSE	BEARING	DISTANCE
108-007	N82°53'52"W	24.87'
107-000	N05°01'29"E	229.21'
200-201	N01°27'27"E	104.41'
201-202	N81°48'16"E	2.39'
202-203	N81°48'16"E	89.40'
203-204	N81°48'16"E	79.24'
204-205	S11°32'27"W	115.22'
205-210	S09°27'00"W	203.61'
210-109	N82°53'52"W	57.81'
209-108	N82°53'52"W	28.68'

POINT TABLE

POINT NUMBER	Y	X
107	452,240.028	786,945.104
108	452,476.853	786,659.783
109	452,473.407	786,698.249
110	452,466.260	786,555.611
200	452,728.256	786,465.173
201	452,895.740	786,467.619
202	452,810.081	786,469.990
203	452,872.822	786,508.176
204	452,894.121	786,636.206
205	452,728.989	786,594.310

SCHEDULE OF UTILITIES & INTERESTS REQUIRED

UTILITY PARCEL NUMBER	OWNERS	TDS TELECOM (TELEPHONE)	WISCONSIN POWER & LIGHT (ALLIANT ENERGY ELECTRIC)	RELEASE OF RIGHTS	RELEASE OF RIGHTS
50	DANE COUNTY				
51	DANE COUNTY				

TOWN OF VERONA SCHEDULE OF LANDS & INTERESTS REQUIRED

PARCEL NUMBER	OWNERS	R/W NEW INTEREST REQUIRED	R/W EXISTING ACRES	R/W TOTAL ACRES	TILE ACRES	H.E. ACRES
2	DANE COUNTY				0.016	
3	WISCONSIN DEPARTMENT OF NATURAL RESOURCES				0.010	

TOWN OF VERONA SCHEDULE OF LANDS & INTERESTS REQUIRED

PARCEL NUMBER	OWNERS	R/W NEW INTEREST REQUIRED	R/W EXISTING ACRES	R/W TOTAL ACRES	TILE ACRES	H.E. ACRES
3	WISCONSIN DEPARTMENT OF NATURAL RESOURCES				0.010	

CONSTRUCTION PROJECT NUMBER

CONSTRUCTION PROJECT NUMBER	5796-00-73
R/W PROJECT NUMBER	5796-00-03
PLAT SHEET	4.02
SHEET	PS&E

DATE: 10/02/2017
 GRID FACTOR: N/A
 SCALE: 1" = 40.00'

PLAT SHEET 4.02

PLAT SHEET	4.02
CONSTRUCTION PROJECT NUMBER	5796-00-73
R/W PROJECT NUMBER	5796-00-03
PLAT SHEET	PS&E
SHEET	E

FILE NAME: 41-0911_000000_00.DWG
 D:\0011\NAME - 4.01

PROJECT DATE: 9/29/2017 2:14 PM
 PLOT DATE: 10/02/2017 2:14 PM
 PLOT SCALE: 1" = 40.00'

PROJECT NAME: VERONA MILITARY RIDGE RECREATIONAL TRAIL
 COUNTY: DANE
 HWY: OLD CTR PB

PROJECT NUMBER: 5796-00-73
 PROJECT NAME: VERONA MILITARY RIDGE RECREATIONAL TRAIL

PROJECT NUMBER: 5796-00-73
 PROJECT NAME: VERONA MILITARY RIDGE RECREATIONAL TRAIL

PROJECT NUMBER: 5796-00-73
 PROJECT NAME: VERONA MILITARY RIDGE RECREATIONAL TRAIL