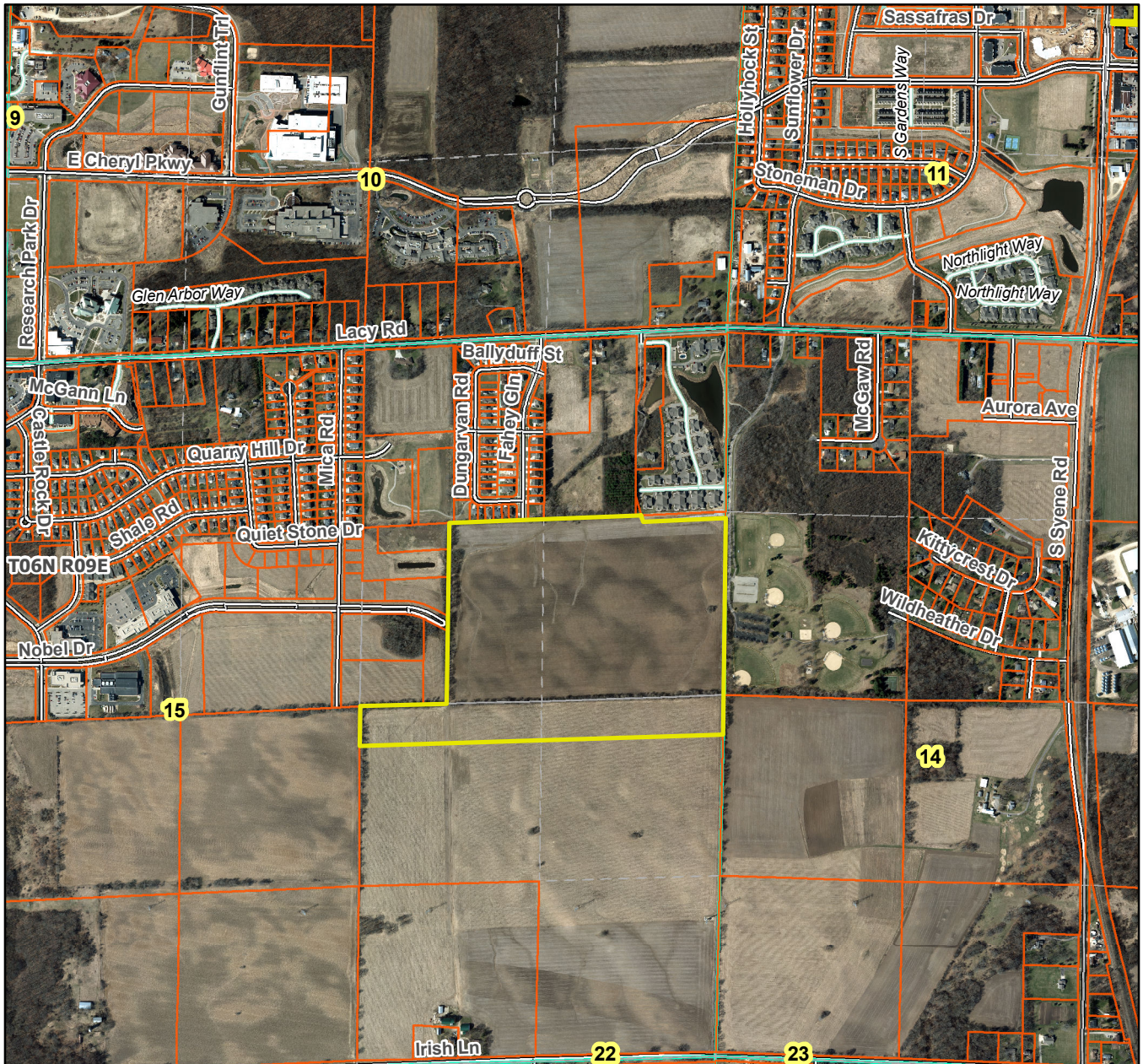


Fahey Fields City of Fitchburg



Plat consists of 107 lots, 8 outlots 80 acres (division of Lot 2, CSM 9896)

Parks – OL1, 4, 6, 7 show as dedicated for park purposes. Bike path corridor shown as well.

Parkways – Fahey Glen (80' ROW)

Expressways – N/A

Major Highways – Lacy Rd. to the north and Syene Rd. to the east.

Airports – Dane County Regional Airport (13 mi)

Drainage Channels – All lots are subject to public easements for drainage purposes (6' wide).

Schools – Established.