



Safe Communities

Report to Health and Human Needs Committee: County-Funded Injury Prevention Activities of Safe Communities

May 20, 2014

**Cheryl Wittke, Executive Director
Safe Communities of Madison/Dane County**

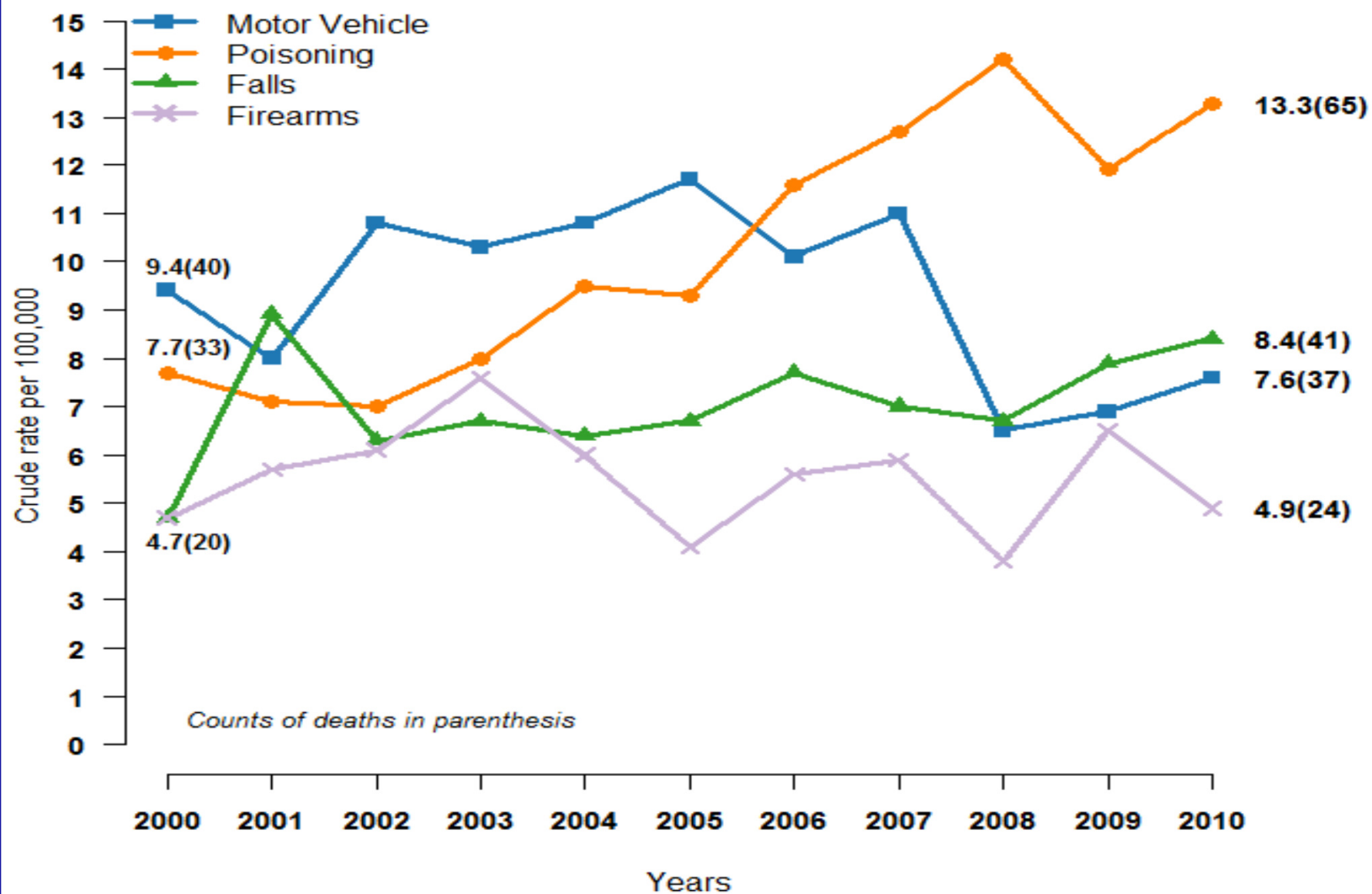
Dane County-Funded Activities

- **Stop the Overdose Epidemic Initiative (Public Health)**
- **MedDrop (Public Health)**
- **Suicide and Accident Prevention (Human Services/Adult Community Services)**
- **Older Adult Prevention Programs (Human Services/Area Agency on Aging)**
- **24-7 study (fiscal agent only) –Judge Sarah O'Brien (Human Services/AODA)**

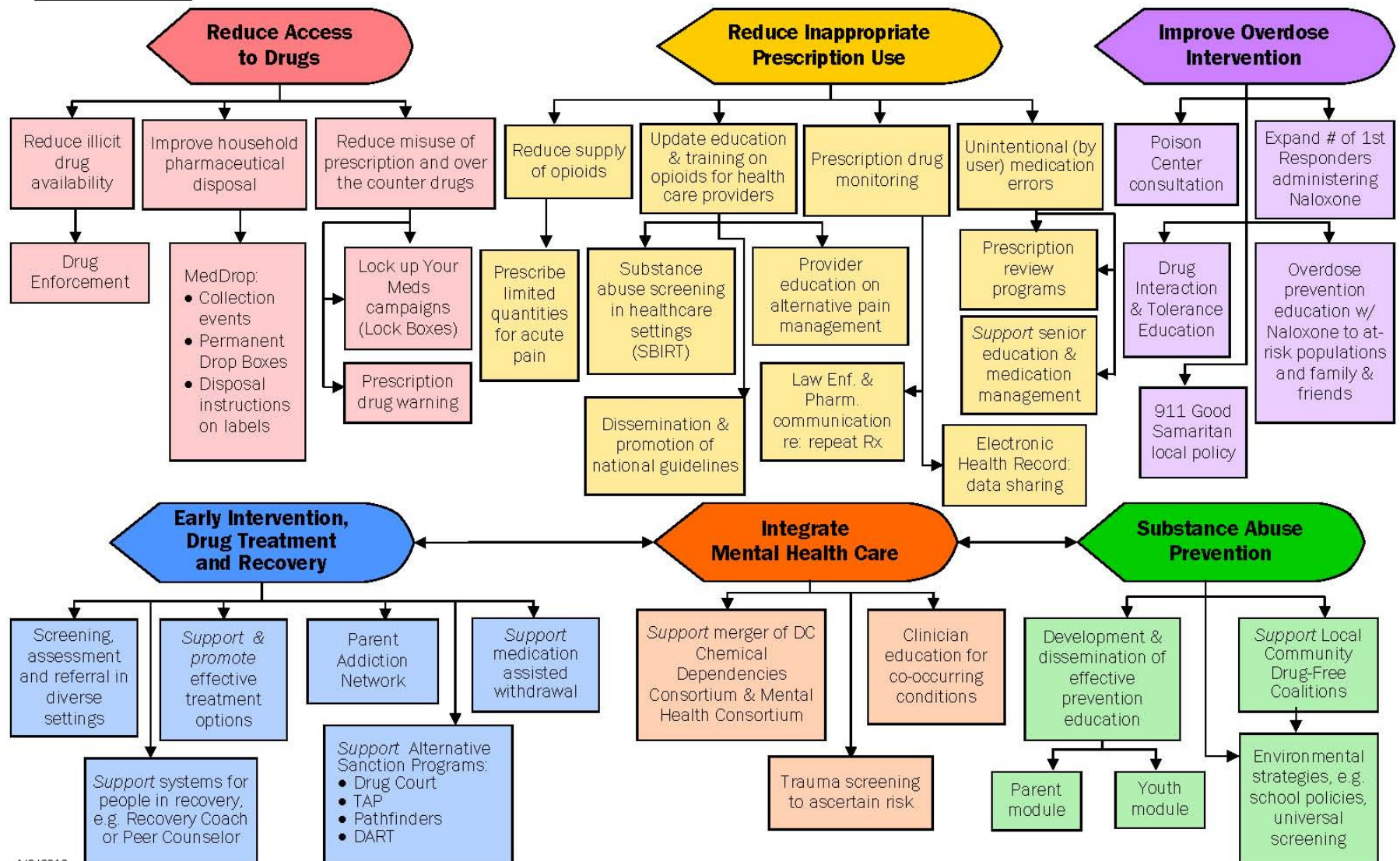
Why Injury Prevention?

- **#1 cause of death for people 1 – 44**
- **Violence and injuries cost more than \$406 billion in medical care and lost productivity each year (US CDC)**
- **CDC estimates that 90% of injuries can be prevented**
- **Listening sessions, community health assessments and data - need for collaborative efforts to prevent injury**

Dane County: Injury Mortality Trends (2000-10)



Steering Committee to Coordinate Across All Six Strategy Areas



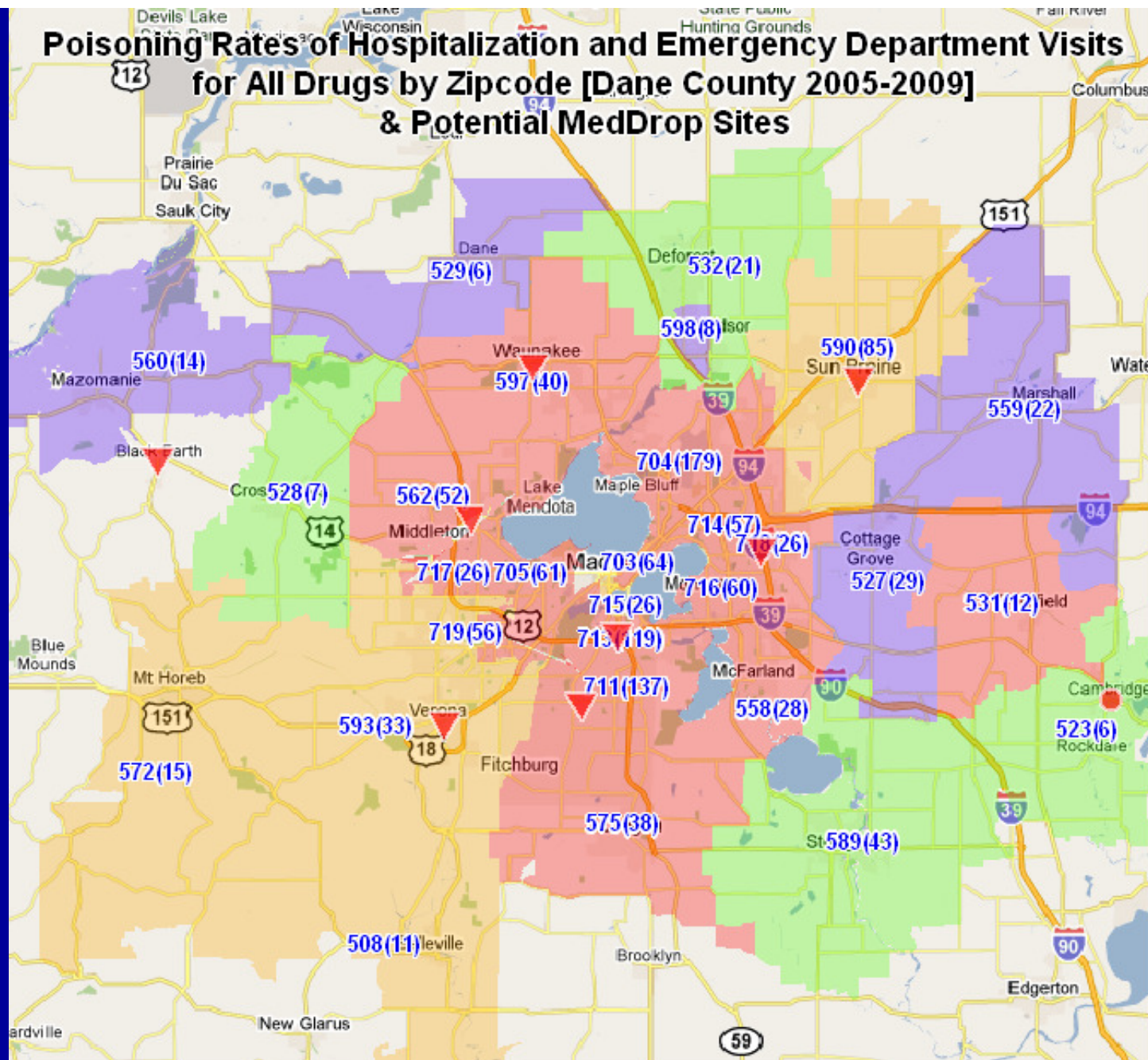
Reducing Inappropriate Prescribing

- **Task Force on Safe Opioid Prescribing: all area health care systems participate**
- **150 clinicians completed SCOPE of Pain (Safe and Competent Opioid Prescribing Education) – Monona Terrace, Nov 2013**
- **3 hospital Grand Rounds with Don Teater, MD, National Safety Council, Nov 2014**
- **Test of draft “smart set” in EPIC developed by Dean docs is underway**
- **Patient education flyers on safe use, storage and disposal developed and disseminated**

Reducing Access: MedDrop

- **4.4 tons of medicines safely disposed of in 2013**
- **DATCP Clean Sweep Grant - Mobile MedDrop pilot with Dane County Narcotics Task Force, Agrace Hospice, Wis. Society of Pharmacy Students (WSPS)**
- **Annual MedDrop Advisory Committee March 17; MedDrop Round-Up scheduled for May 19-20**
- **Cardinal Health Foundation Grant awarded to Safe Communities and WSPS – public ed**
- **Blue Mounds MedDrop to open in June; seeking one more location in southern Dane.**

Poisoning Rates of Hospitalization and Emergency Department Visits for All Drugs by Zipcode [Dane County 2005-2009] & Potential MedDrop Sites



Rates per 10,000 and MedDrop Sites

▼ MedDrop site
 ● MD site-DCS
 ■ ≤15
 ■ 15.1 to 20
 ■ 20.1 to 25
 ■ >25

Treatment and Recovery

PARENT
Addiction
NETWORK

of DANE COUNTY



An online resource center for family and friends of people battling drug addiction

Website content

- Understanding addiction
- FAQs
- Signs and Symptoms
- Insurance
- Legal System
- Treatment
- Overdose – Crisis
- Recovery
- Parent Self Care
- Glossary
- Reading
- Resources
- In the News
- Contact Numbers



www.ParentAddictionNetwork.org

Parent Addiction Network Educational Series

The Biology of Addiction: An Introduction

John Ewing, MD, Addiction Medicine, Meriter NewStart

Medication Assisted Treatment: Options for Treating Prescription Opioid and Heroin Addiction

David Pierce MD, General Psychiatry and Addiction Medicine, Northstar Counseling Center

Dane County's Deferred Prosecution Program

James Sauer, Dane County Deferred Prosecution Program

Dane County Drug Treatment Court: What's New?


SPEAKERS: DeeDee Watson, State Public Defenders Office, Todd Meurer, Court Commissioner, and Lucy Milani, Journey Mental Health

Improve Overdose Intervention

WI HOPE laws allow for wider access to rescue doses of naloxone (narcana). Partners leading the way to expand access:

- Dane County EMS**
- Waunakee and other area police departments**
- Area emergency departments and treatment providers**

Opiate Overdose Survey



This is where users can enter their feedback on the ROI Analysis tool

ROI Questionnaire

1. What do you think about the ROI Questionnaire?

2. How much revenue did your company generated last year?

Please select an option

3. Did you like the layout of the ROI Analysis?

Please select an option

4. Do you think you will purchase additional runs in the future?

Please select an option

5. How many employees currently work for your company?

6. What is your current operating system?

☐ Windows
☐ Unix
☐ Linux
☐ Sun
☐ HP-UX
☐ BSD

7. Do you like cows?

Purposeful sample. N= 1100

- 504 current & past drug users
- 597 first responders (police & EMS)

Overdose Discussion Group



- 30 people: 1/2 people in recovery; 1/2 allies
- Group met twice

Substance Abuse Prevention

- **Grant from WI Department of Justice**
- **Educator Prevention Network Website and Training of Trainers Launched**
- **60 attended – 11 school districts and 7 police departments represented**
- **Science-based AODA prevention education, both local, state and national, available through the network**

Suicide Prevention

- **QPR**
- **Assessing and Managing Suicide Risk Training, May 30, 2013**
- **Perfect Depression Care pilot with area health care organizations**
- **Man Therapy (funded through 1-year transfer of grant from HOPES to Safe Communities)**

Question, Persuade, Refer (QPR)

334 people trained (January – March 2014)

- **Wisconsin Department of Transportation**
- **Mount Horeb Volunteer Fire Department**
- **Northeast Senior Coalition of Madison**
- **Wisconsin Department of Military Affairs**
- **Madison Police Department Pre-Service Academy**
- **Bethel Lutheran Church, Madison**

Man Therapy

- **Males are almost three times more likely to complete suicide than females, regardless of age.**
- **The suicide rate for males is highest at ages 45-54.**
- **Theory behind Man Therapy – what we've tried in the past isn't working: need a novel approach**

Man Therapy

Build Partnerships to disseminate

- **Health Care Providers**
- **Employers (Wisconsin Safety Council)**
- **Taverns**
- **Sportsmen's Clubs**
- **Faith Communities**
- **Fraternities and service clubs**

Public Education Campaign to include

- **Outdoor Advertising (billboards and bus ads)**
- **Radio**



Safe Communities

Thank you!

**Cheryl Wittke, Executive Director
Safe Communities of Madison/Dane County**

cwittke@safercommunity.net

www.safercommunity.net

(608) 256-6713