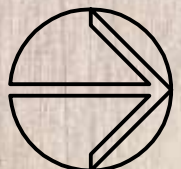
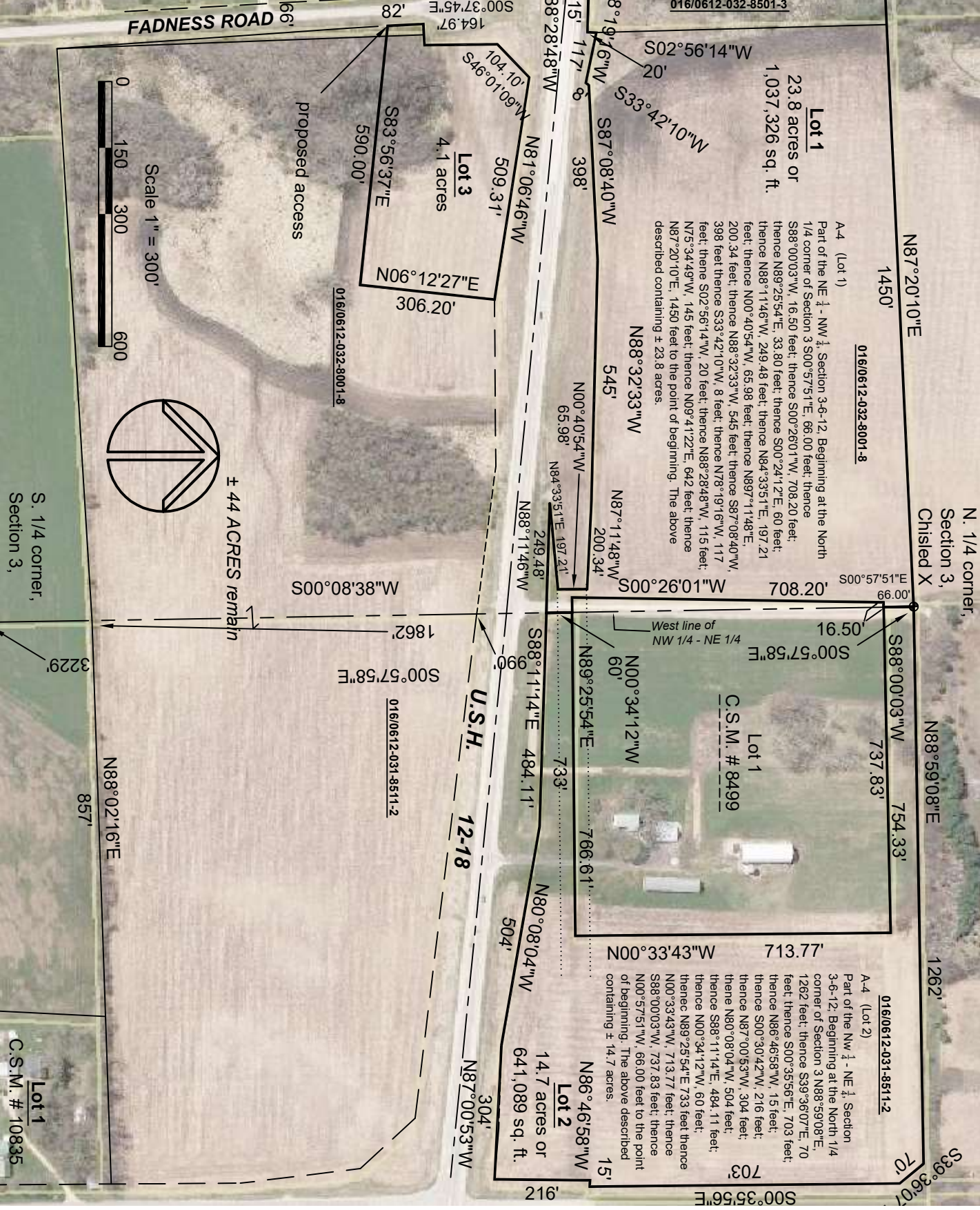


Preliminary Certified Survey Map

PREPARED FOR:
 ROBERT & KIM RIEGE
 140 FAIR OAK RD
 DEERFIELD WI 53531

Part of the NE 1/4 of the NW 1/4 &
 NW 1/4 of the NE 1/4 all in Section 3,
 T.6N., R.12E., Town of Christiana,
 Dane County, Wisconsin.



S. 1/4 corner,
 Section 3,

Lot 1
 C.S.M. # 10835

Lot 1
 23.8 acres or
 1,037,326 sq. ft.

A-4 (Lot 1)
 Part of the NE 1/4 - NW 1/4 Section 3-6-12. Beginning at the North
 1/4 corner of Section 3 S00°57'51"E, 66.00 feet; thence
 S88°00'03"W, 16.50 feet; thence S00°26'01"W, 708.20 feet;
 thence N89°25'54"E, 33.80 feet; thence S00°24'12"E, 60 feet;
 thence N88°11'46"W, 249.48 feet; thence N84°33'51"E, 197.21
 feet; thence N00°40'54"W, 65.98 feet; thence N89°11'48"E,
 200.34 feet; thence N88°32'33"W, 545 feet; thence S87°08'40"W,
 398 feet; thence S33°42'10"W, 8 feet; thence N78°19'16"W, 117
 feet; thence S02°56'14"W, 20 feet; thence N88°28'48"W, 115 feet;
 N75°34'49"W, 145 feet; thence N09°41'22"E, 642 feet; thence
 N87°20'10"E, 1450 feet to the point of beginning. The above
 described containing ± 23.8 acres.

Lot 1
 C.S.M. # 8499

A-4 (Lot 2)
 Part of the NW 1/4 - NE 1/4 Section
 3-6-12. Beginning at the North 1/4
 corner of Section 3 N88°59'08"E,
 1262 feet; thence S39°36'07"E, 70
 feet; thence S00°35'56"E, 703 feet;
 thence N86°46'58"W, 15 feet;
 thence S00°30'42"W, 216 feet;
 thence N87°00'53"W, 304 feet;
 thence N80°08'04"W, 504 feet;
 thence S88°11'14"E, 484.11 feet;
 thence N00°34'12"W, 60 feet;
 thence N89°25'54"E 733 feet; thence
 N00°33'43"W, 713.77 feet; thence
 S88°00'03"W, 737.83 feet; thence
 N00°57'51"W, 68.00 feet to the point
 of beginning. The above described
 containing ± 14.7 acres.

Lot 2
 14.7 acres or
 641,089 sq. ft.

Lot 3
 4.1 acres

± 44 ACRES remain

U.S.H. 12-18

N. 1/4 corner,
 Section 3,
 Chisled X

N88°59'08"E

1262'

S39°36'07"

016/0612-032-8001-8

016/0612-031-8511-2

016/0612-031-8511-2

016/0612-032-8001-18

016/0612-031-8511-2

016/0612-032-8501-3