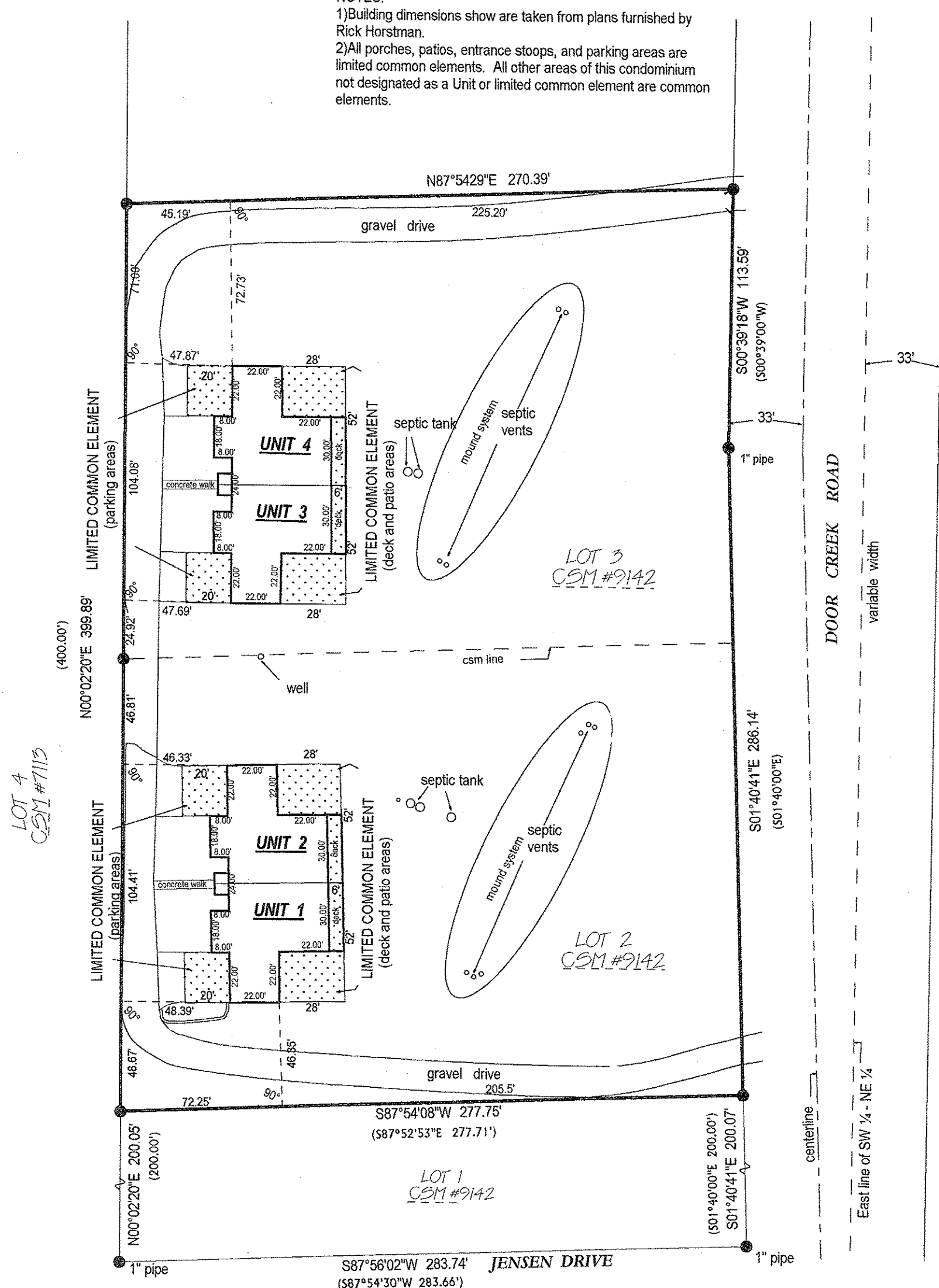


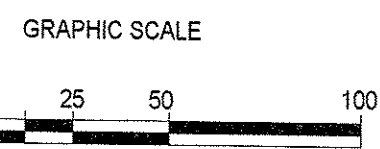
NOTES:
 1) Building dimensions show are taken from plans furnished by Rick Horstman.
 2) All porches, patios, entrance stoops, and parking areas are limited common elements. All other areas of this condominium not designated as a Unit or limited common element are common elements.

Description of Condominium Area

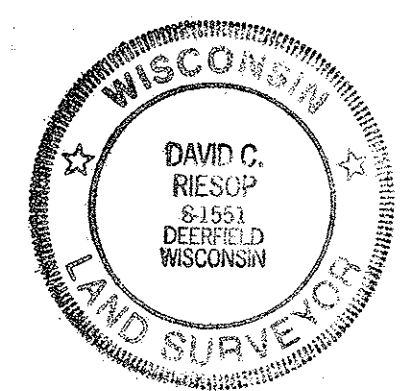
Lots 2 and 3, Dane County Certified Survey Map number 9142 being further located in part of the SW 1/4 of the NE 1/4, Section 7, T.6N., R.11E., Town of Pleasant Springs, Dane County, Wisconsin.



LEGEND
 ● = 3/4" rod found unless otherwise noted
 ○ = 3/4" dia. X 24" long iron rod set 1.5lbs. per Lineal Foot
 [Stippled Area] = Limited Common Elements
 All other areas not designated as Limited Common Element or Unit are Common Elements



SURVEYOR'S CERTIFICATE
 I, David C. Riesop, a Wisconsin Registered Land Surveyor, do hereby certify that this Horstman Condominium Plat, consisting of three sheets, is a correct representation of the condominium described. And further that the identification and location of each unit and the common elements can be determined from the plat. The floor plans are reproduced from the building plans furnished by the architects.



I further certify that I have surveyed the property and that the map is a true representation thereof and shows the size and location of the property, its exterior boundaries, the exterior boundaries of the expansion area and the location of all visible structures.

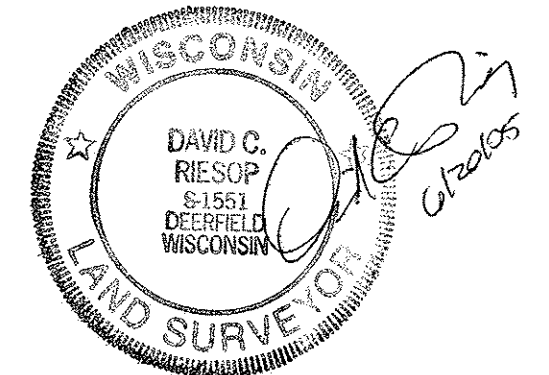
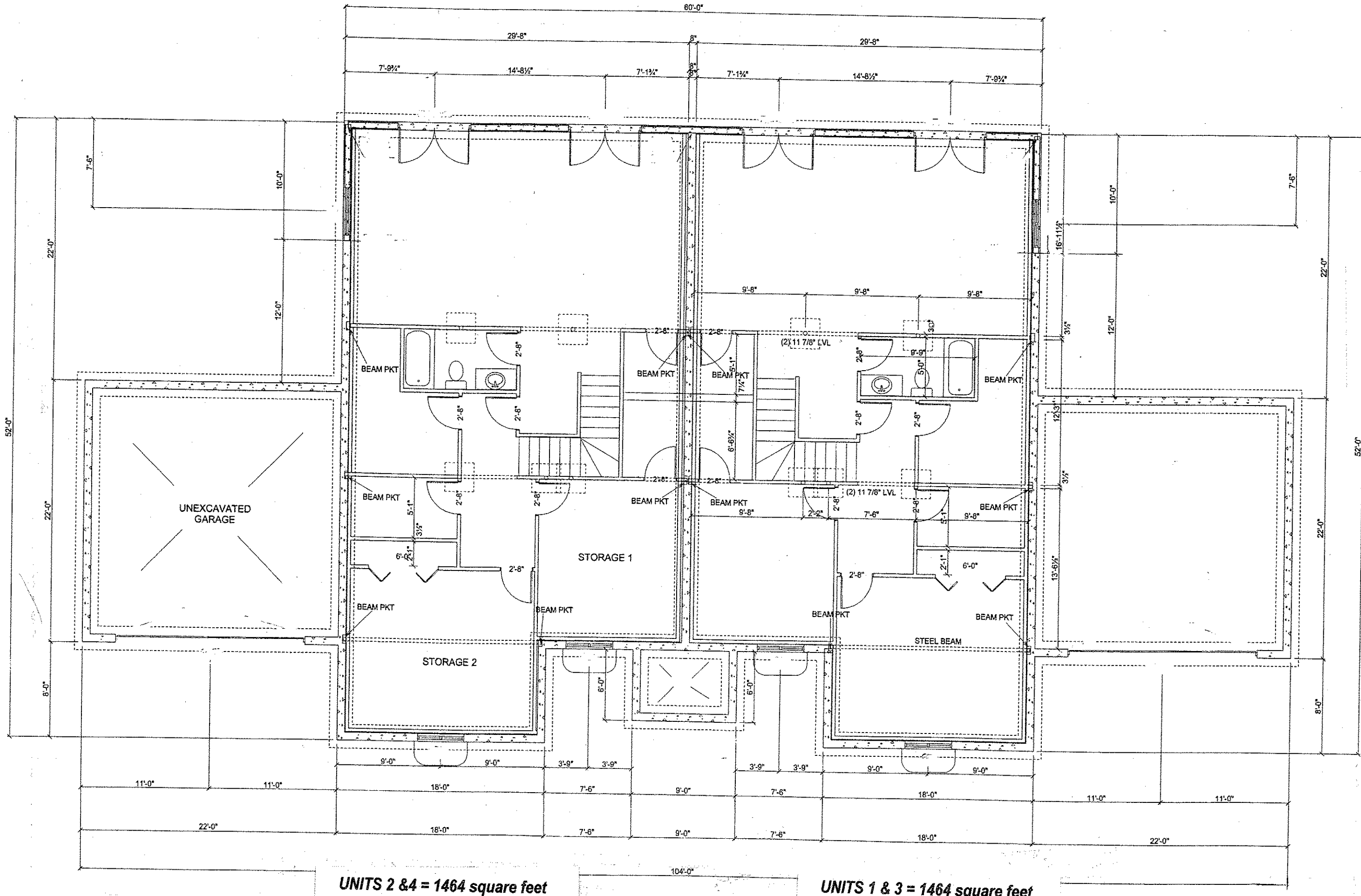
Dated 6/22/05 David C. Riesop
 David C. Riesop S-1551

Register of Deeds Certificate
 Received for Recording this 5th day of July, 2005
 at 7:53 o'clock A. M., and recorded in Volume 5-030B
 of Condominium Plats, on pages 1-3

Jane Licht by Kurt Chlebowski 4075012
 Jane Licht, Register of Deeds, Dane County Deputy

**HORSTMAN
 Condominium Plat**

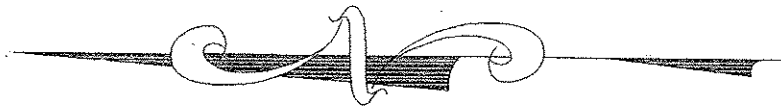
Lots 2 and 3, Dane County Certified Survey Map number 9142 being further located in part of the SW 1/4 of the NE 1/4, Section 7, T.6N., R.11E., Town of Pleasant Springs, Dane County, Wisconsin.



NOTES:
 1) Building dimensions shown are taken from plans furnished by Rick Horstman. All dimensions are exterior building dimensions and all Unit areas are based on exterior building dimensions.
 2) All porches, patios, entrance stoops, concrete walks and bituminous drives and parking areas are limited common elements. All other areas of this condominium not designated as a Unit or limited common element are common elements.

UNITS 2 & 4 = 1464 square feet

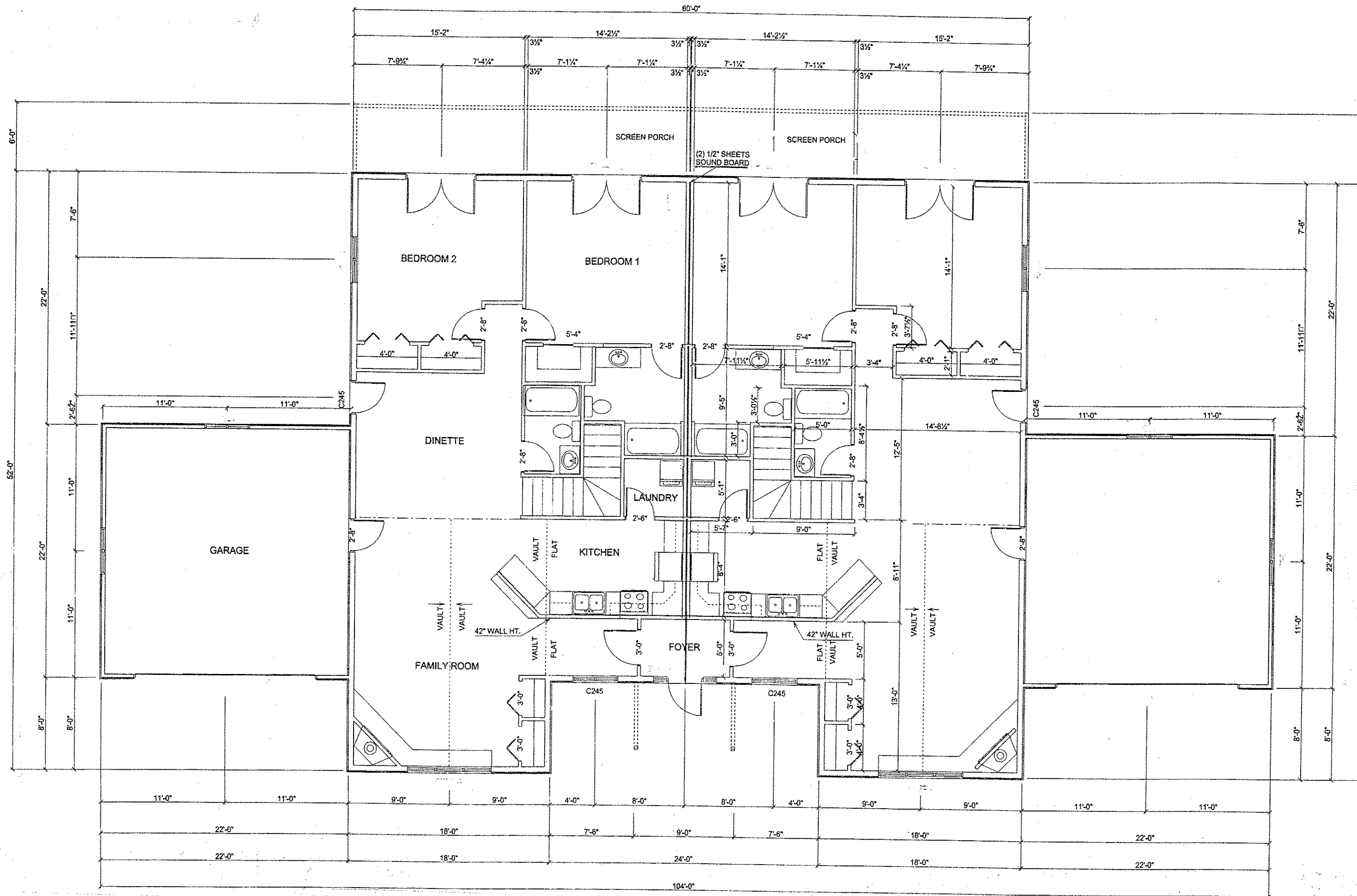
UNITS 1 & 3 = 1464 square feet



FOUNDATION PLAN
 scale 1" = 8'

**HORSTMAN
 Condominium Plat**

Lots 2 and 3, Dane County Certified Survey Map number 9142 being further located in part of the SW 1/4 of the NE 1/4, Section 7, T.6N., R.11E., Town of Pleasant Springs, Dane County, Wisconsin.

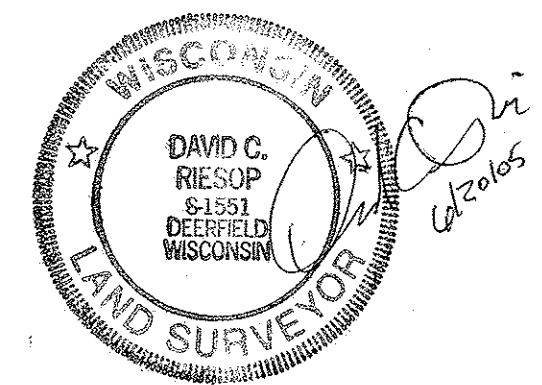


UNITS 2 & 4 = 1464 square feet
GARAGE = 484 square feet

UNITS 1 & 3 = 1464 square feet
GARAGE = 484 square feet

FIRST FLOOR PLAN
scale 1" - 8'

- NOTES:
- 1) Building dimensions show are taken from plans furnished by Rick Horstman. All dimensions are exterior building dimensions and all Unit areas are based on exterior building dimensions.
 - 2) All porches, patios, entrance stoops, concrete walks and bituminous drives and parking areas are limited common elements. All other areas of this condominium not designated as a Unit or limited common element are common elements.



HORSTMAN
Condominium Plat

Lots 2 and 3, Dane County Certified Survey Map number 9142 being further located in part of the SW 1/4 of the NE 1/4, Section 7, T.6N., R.11E., Town of Pleasant Springs, Dane County, Wisconsin.