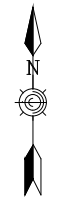


362 LAKE SHORE DRIVE  
EDGERTON, WI

SCALE: 20  
0 5 10 20



Surface Properties - Volume

Statistics	Value
General	
TIN	
Volume	
Base Surface	Contours
Comparison Surface	Backyard Grading Final
Cut Factor	1.000
Fill Factor	1.000
Cut volume (adjusted)	0.48 Cu. Yd.
Fill volume (adjusted)	3.35 Cu. Yd.
Net volume (adjusted)	2.87 Cu. Yd.<Fill>
Cut volume (unadjusted)	0.48 Cu. Yd.
Fill volume (unadjusted)	3.35 Cu. Yd.
Net volume (unadjusted)	2.87 Cu. Yd.<Fill>

NOTE: 2.87 CY TO BE REMOVED FROM FRONT YARD.

- ⊕ SPOT ELEVATION EXISTING
- ⊕ BFE = 784.90
- ⊕ ORDINARY HIGH WATER MARK = 778.3
- ⊕ CRAWL SPACE ELEVATION (PROPOSED) = 784.9 EXISTING = 784.0

LAKE KOSHKONONG

**SIDE YARD SETBACK & FLOOD PROTECTION VARIANCES**

PLANS PREPARED BY



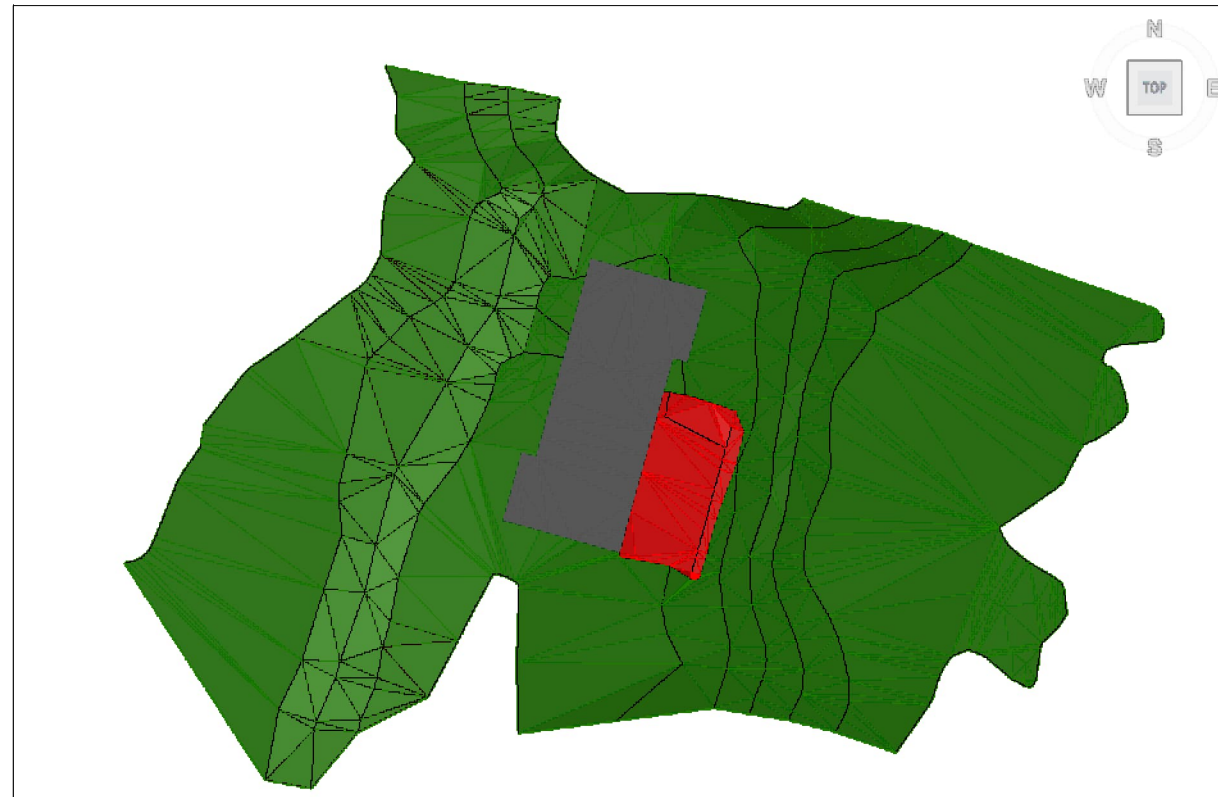
10/21/24

(Date)

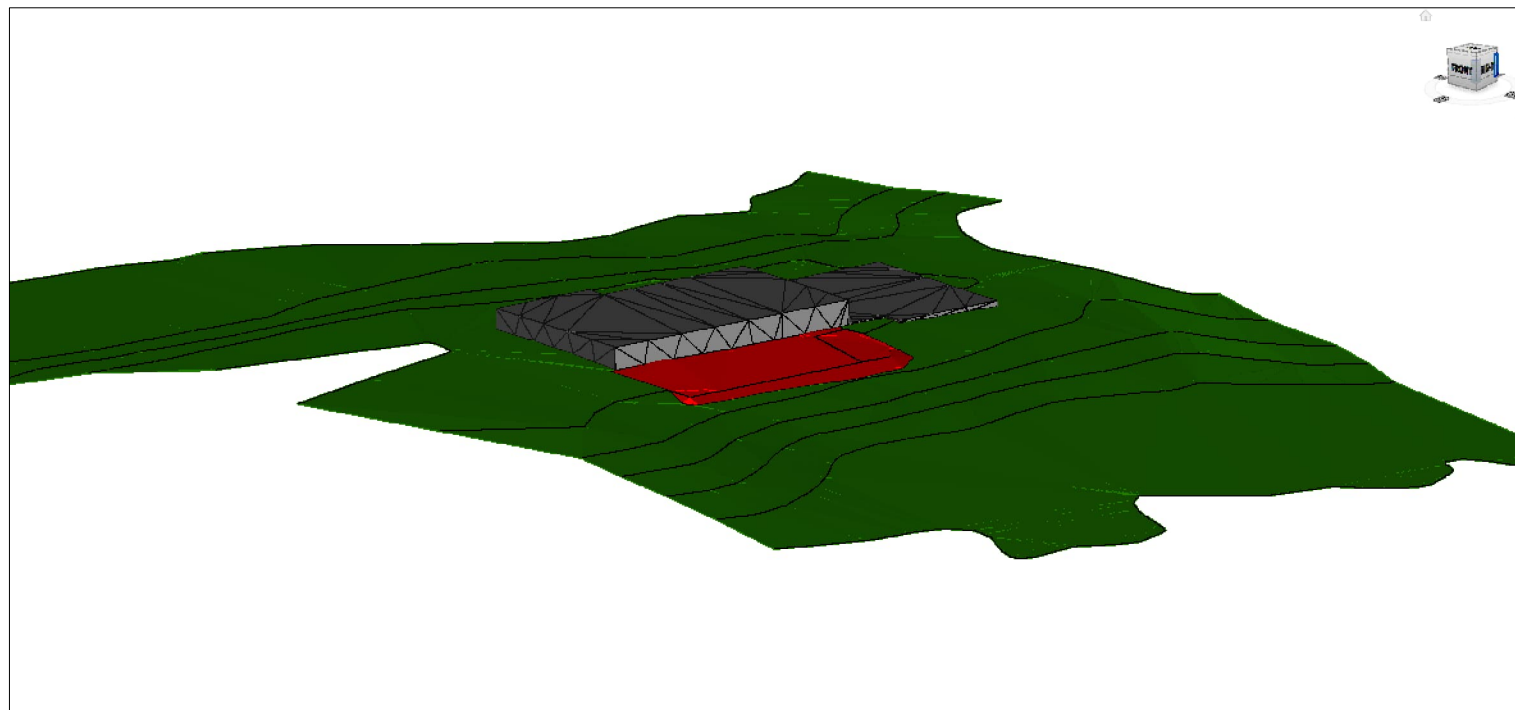
*Jason P. Zembroski*

(Signature)

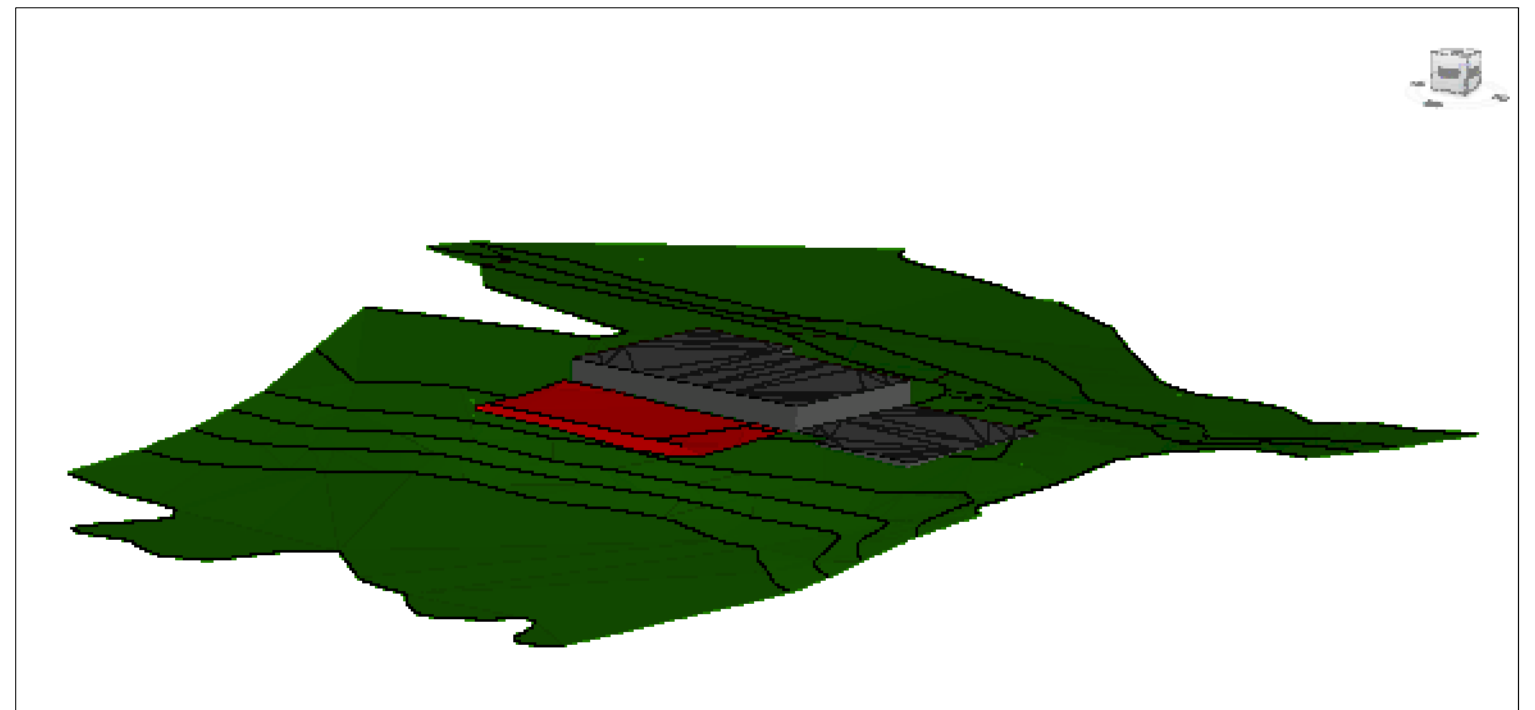
PLAN VIEW



LOOKING NORTH WEST



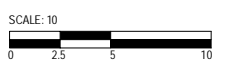
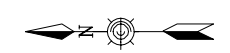
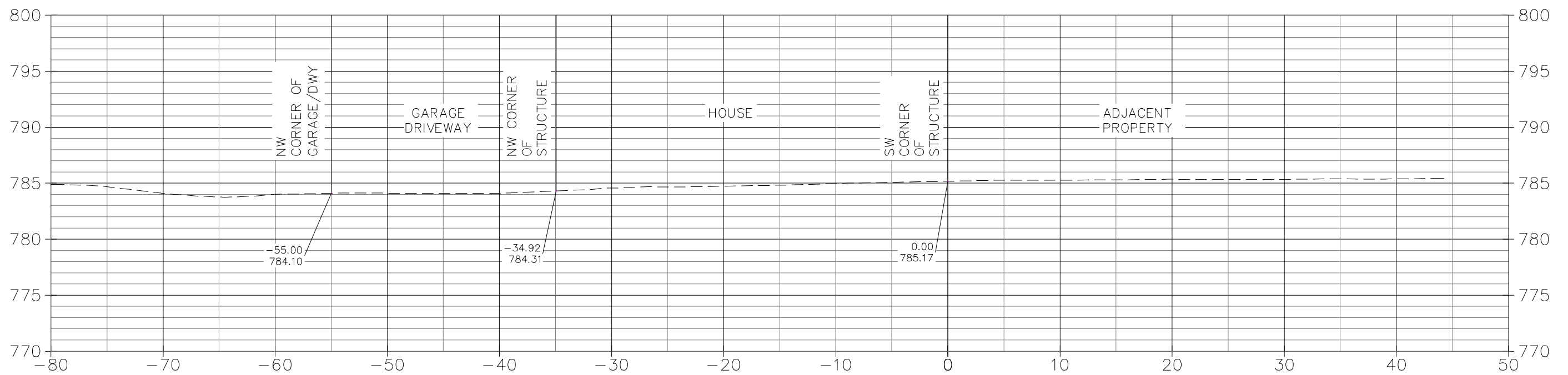
LOOKING SOUTH WEST







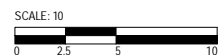
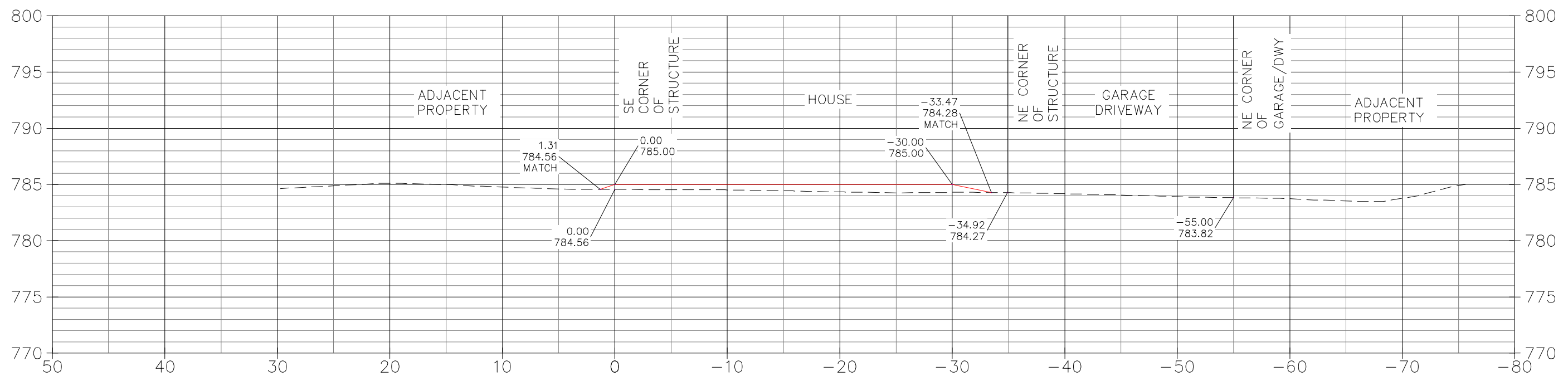
0+00.00 15' 0/S FROM FRONT OF HOUSE

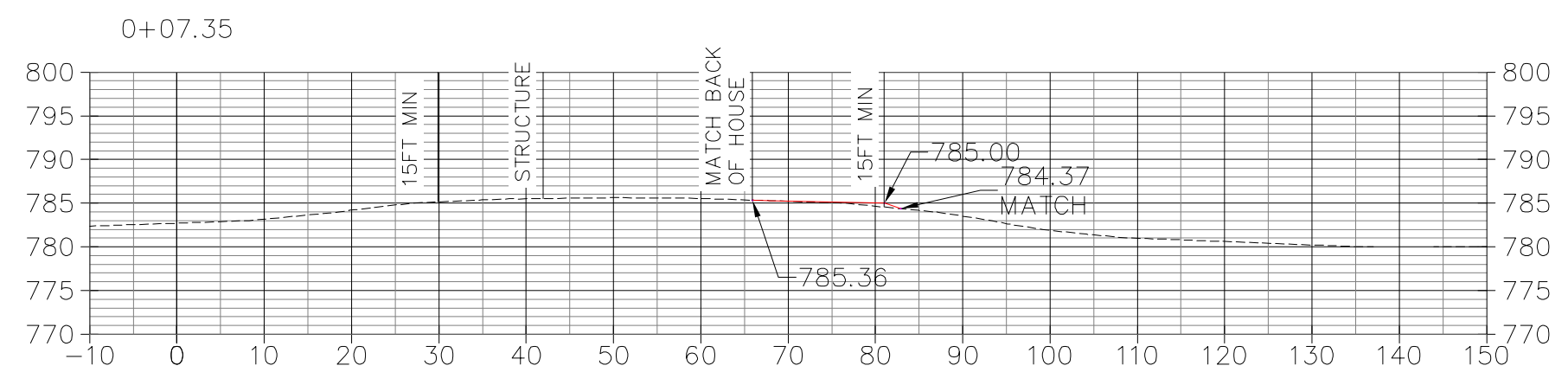
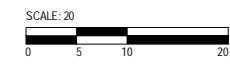




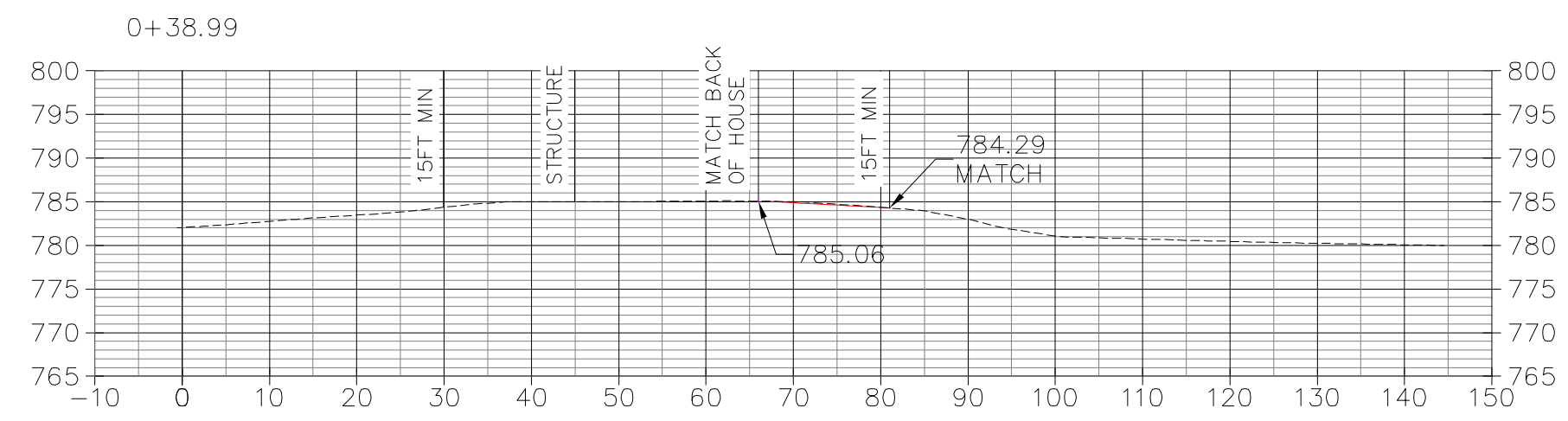


0+51.08 15' 0/S FROM BACK OF HOUSE

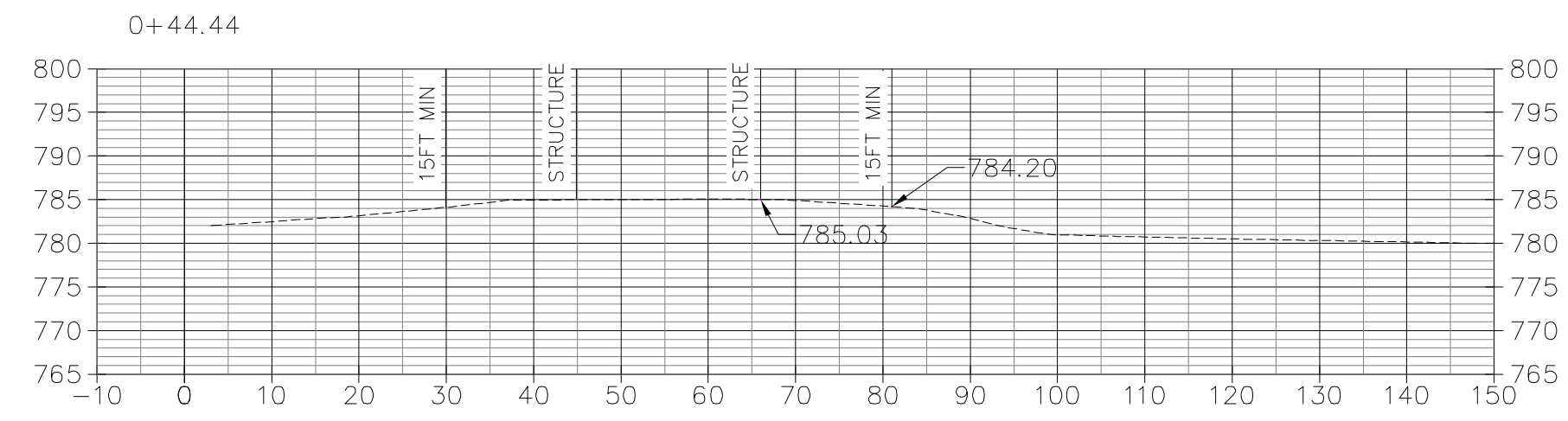




LOOKING NORTH  
START STRUCTURE



LOOKING NORTH  
END STRUCTURE



LOOKING NORTH  
GARAGE





MIDDLE OF HOUSE CROSS SECTION

