

EMERGENCY MANAGEMENT 2024

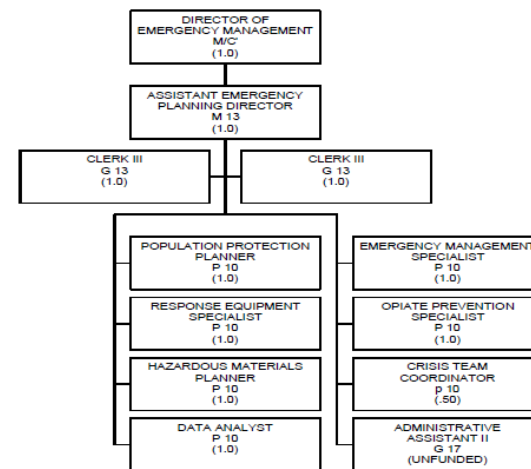
Budget summary



ORGANIZATIONAL CHART

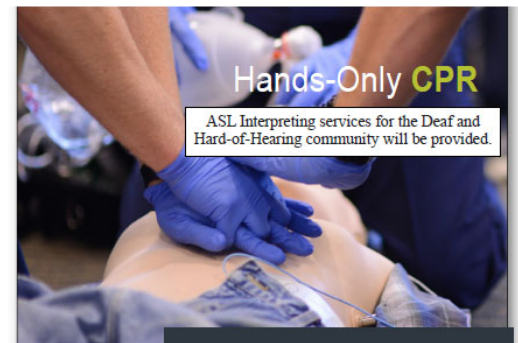
Dane County Emergency Management's mission is to support and strengthen an effective Emergency Management System with our stakeholders to protect the lives, property, and environment of residents and visitors of Dane County.

EMERGENCY MANAGEMENT



LANGUAGE ACCESS & CHALLENGES

Outreach . Readiness . Trust . Preparedness . Access . Diversity . Special Needs . Culture . Equity



Hands-Only **CPR**

ASL Interpreting services for the Deaf and Hard-of-Hearing community will be provided.



IN 2022, PEOPLE WHO RECEIVED BYSTANDER CPR IN DANE COUNTY HAD OVER TWICE THE SURVIVAL RATE OF THOSE WHO DID NOT.

Fitch-Rona EMS District will be hosting a Compression-Only/AED course at the Fitchburg Public Library at 5530 Lacy Rd, Fitchburg, WI 53571.

Tuesday, September 19th, 2023 from 6 pm - 7:30 pm

The class is free. Registration is encouraged, but not required.

Scan the QR code to sign up!!



SCAN ME

PROPOSED CHANGES OPERATIONAL ITEMS

- Addition of annual cost for security software at new location
- Carry forward items
 - Pulsepoint
 - Volunteer Recognition
 - Medication Vending Machine
 - Narcan Leave Behind “Hope Kit” & Opiate Settlement
 - Siren Upgrade capital funds if not completed by 12/31

CAPITAL BUDGET REQUESTS – NEW LOCATION CARRY FORWARD



- COMING SOON -
DANE COUNTY EMERGENCY MANAGEMENT
5492 KAPEC WAY FITCHBURG



QUESTIONS

Director Charles Tubbs Sr.

Tubbs.Charles@countyofdane.com

Assistant Director Carrie Meier

meier.carrie@countyofdane.com