

Final Plat - Highlands of Netherwood

Village of Oregon

Plat consists of 97 lots, 14 Outlots, 76.2 acres.

Parks - Lot 97 dedicated to the public for park purposes.

Parkways - none

Expressways - N/A

Major Highways - CTH CC to the south.

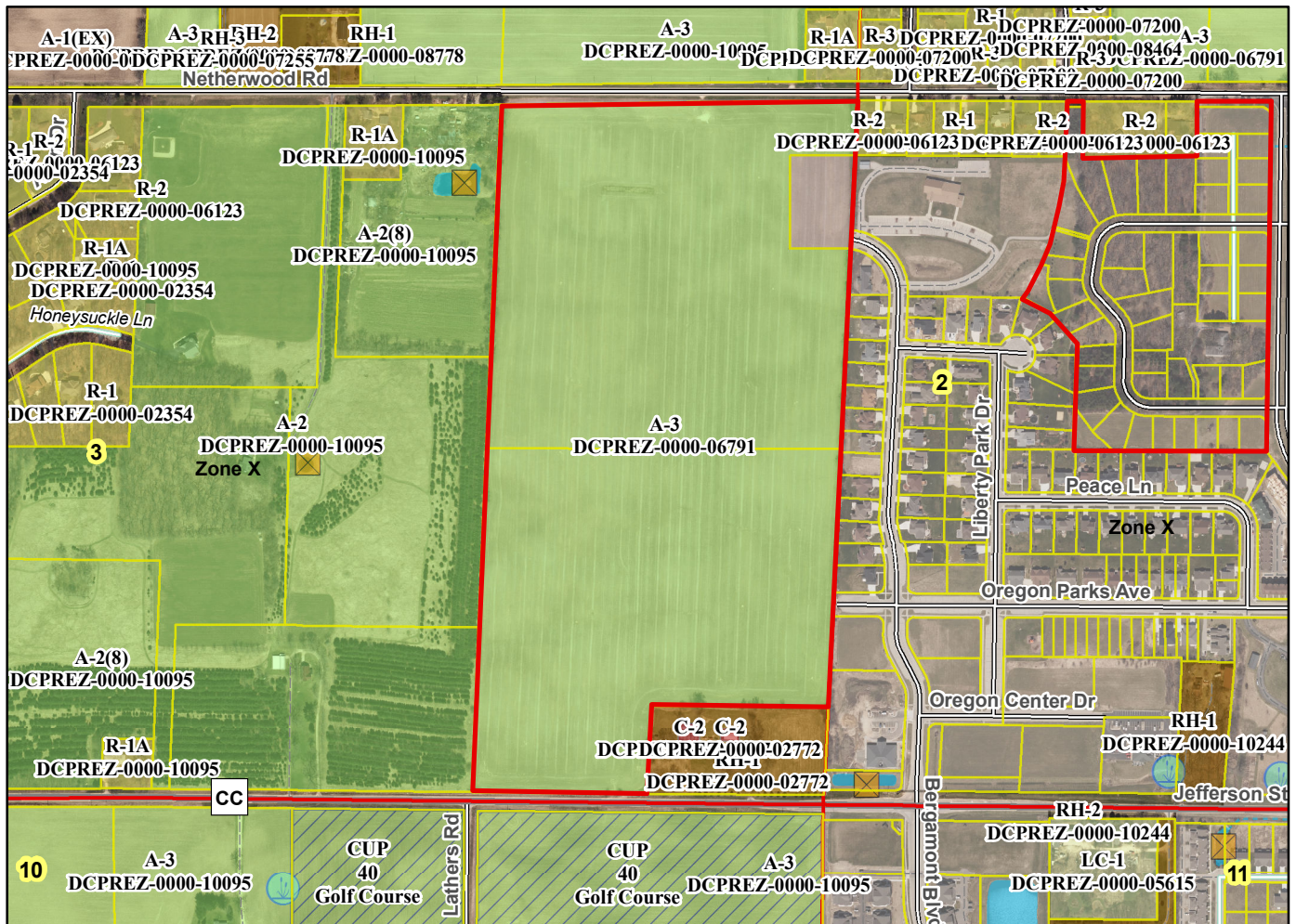
Airports - Dane County Regional

Drainage Channels - Drainage arrows shown indicate the direction of surface drainage swale at individual property lines. OL's 1, 2 and 9 are for stormwater.

Schools - established

Other Development - OL 13 dedicated to the public for bike path purposes.

Plats of subdivisions located in all other incorporated municipalities shall be submitted to the committee, as provided by section 236.12(2)(b) of the Wis. Stats., for the purpose of determining whether the committee has any objection to the plat. The basis for any objection to any such plat shall be that the plat conflicts with parks, parkways, expressways, major highways, airports, drainage channels, schools or other planned public developments.



Motion to certify with no objections: _____, Second: _____, Vote: _____