

DOA Plat - FIRST ADDITION TO HERITAGE HILLS

Village of Waunakee

Parks - No parkland shown.

Parkways - none

Expressways - N/A

Major Highways - STH 19 to the south.

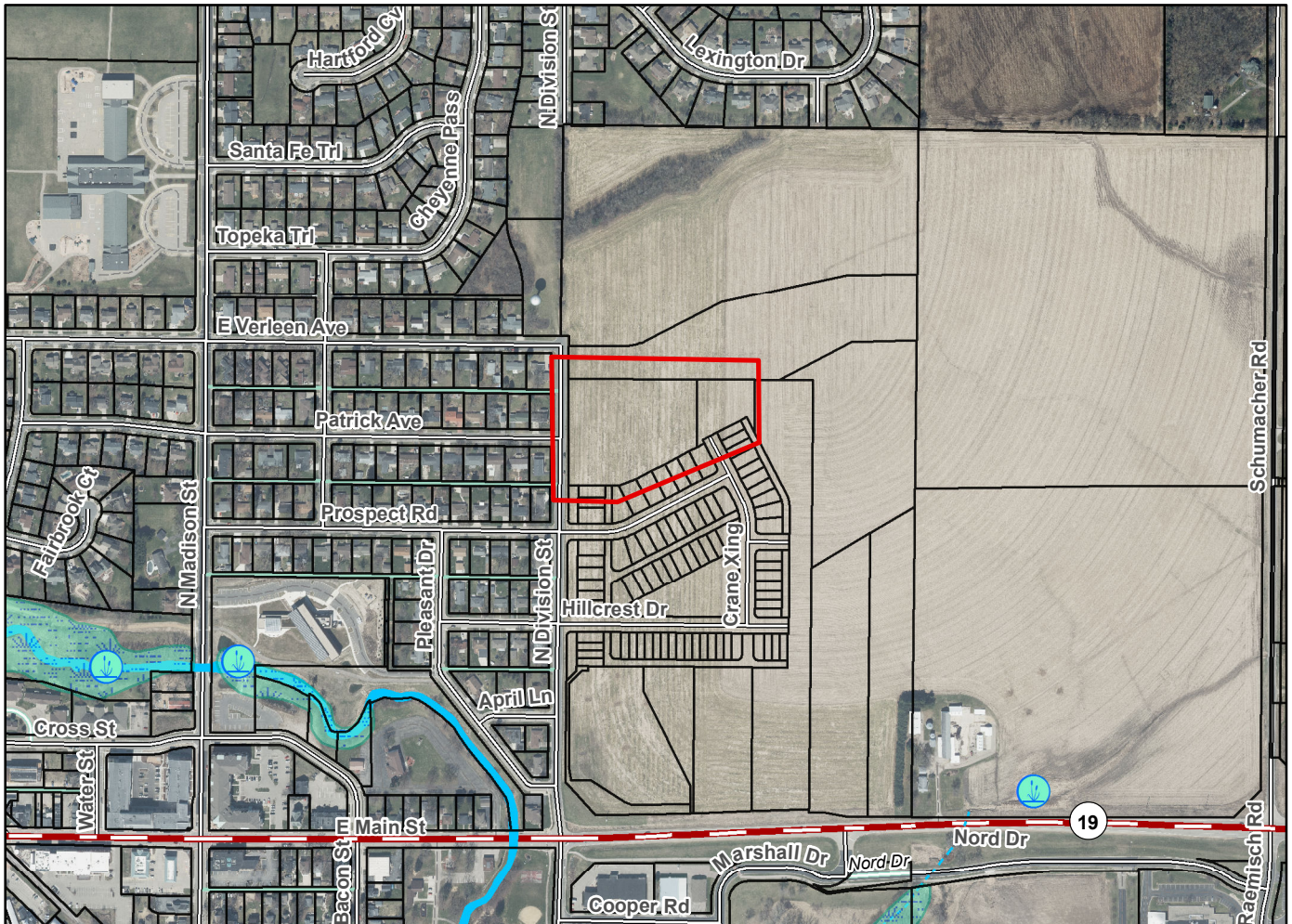
Airports - No conflicts.

Drainage Channels - Public stormwater easements shown throughout the plat.

Schools - established

Other Development - OL 14 and 15 shown as dedicated for stormwater management, storm sewer.

Plats of subdivisions located in all other incorporated municipalities shall be submitted to the committee, as provided by section 236.12(2)(b) of the Wis. Stats., for the purpose of determining whether the committee has any objection to the plat. The basis for any objection to any such plat shall be that the plat conflicts with parks, parkways, expressways, major highways, airports, drainage channels, schools or other planned public developments.



Motion to certify with no objections: _____, Second: _____ Vote: _____