



P.O. Box 277 Waunakee, WI 53597-0277 Phone 608-849-4162 Fax 608-849-5062

March 21, 2014

RECEIVED

MAR 21 2014

Ms. Pam Andros
Dane County Planning & Zoning
City County Building
210 Martin Luther King, Jr. Blvd
Room 116
Madison, WI 53703

DANE COUNTY PLANNING & DEVELOPMENT

Dear Pam:

In response to your memorandum dated March 20, 2014, requesting more information regarding CUP 2260 in the Town of Albion, Dane County, WI, we respectfully submit the following information for your review.

Revised CUP boundary.

In the interest of avoiding any areas that are considered wetlands, we have adjusted the boundaries of the proposed CUP area. These revisions have been agreed upon with the Zoning Administrator, Roger Lane, and a meets and bounds description has been revised.

Location of berms in relation to the new boundaries.

The location of the berms created by the stripping of topsoils and sub soils will be in locations well away from any wetlands. We will seed and mulch to prevent erosion as described in our erosion control plan.

Haul routes.

The haul routes from this site will be via the existing field road, which runs in an East West direction from the proposed quarry site to State Highway 73. From the entrance on Highway 73, the trucks will travel North or South to reach the project location where the aggregate is needed in the reconstruction projects.

Project phasing.

The phasing of the projects from this site will reflect the proposed DOT reconstruction projects on Highway 73, Highway 106, Highway I-39, Hillside Road, and any Town of Albion projects. These projects are scheduled to be completed over the next 10 years. Typically, there will be one or two projects per year on I-39.

Open active extraction area, including an estimated number of acres.

The open active extraction area will be determined by the size of the projects the quarry will be supplying and should not exceed more than 10 acres at any time. The active area will be kept as small as possible and restoration of worked out areas will be an ongoing process.

Location of where blasting will take place.

All blasting will take place on the ridge, which runs in a North-South direction. The soils will be stripped from the rock and a drill will be used to prepare the rock for blasting. All blasting will be conducted in accordance with the State of Wisconsin Com. 7 Standard and the Yahara Materials, Inc. blasting plan.

Location of erosion control measures.

Erosion Control measures will be implemented as the site is developed and as is necessary to meet Dane County Land Conservation standards. All stockpiled soils will have silt fence installed as necessary to prevent erosion. All erosion control measures will be monitored daily and after any storm event.

Location of Stockpiles.

Stockpiles will be located on the East side of the ridge containing the limestone deposit. A staging platform will be built to site the initial stockpiles and to locate the crusher. As the quarry is expanded, the crusher and stockpiles will be located inside the quarry. At that time, the staging area will be restored and returned to agricultural production.

Potential location for portable crushing equipment.

As stated in item number 7, a staging platform will be constructed/graded on the Southeast side of the Limestone ridge. The crusher will be located on this area (see attached drawings) as close to the blasted rock as possible for the initial crushing phases. As the quarry expands, the crushing equipment will be moved into the quarry. When room permits, the stockpiles will also be moved into the quarry.

Land to continue in active agricultural use.

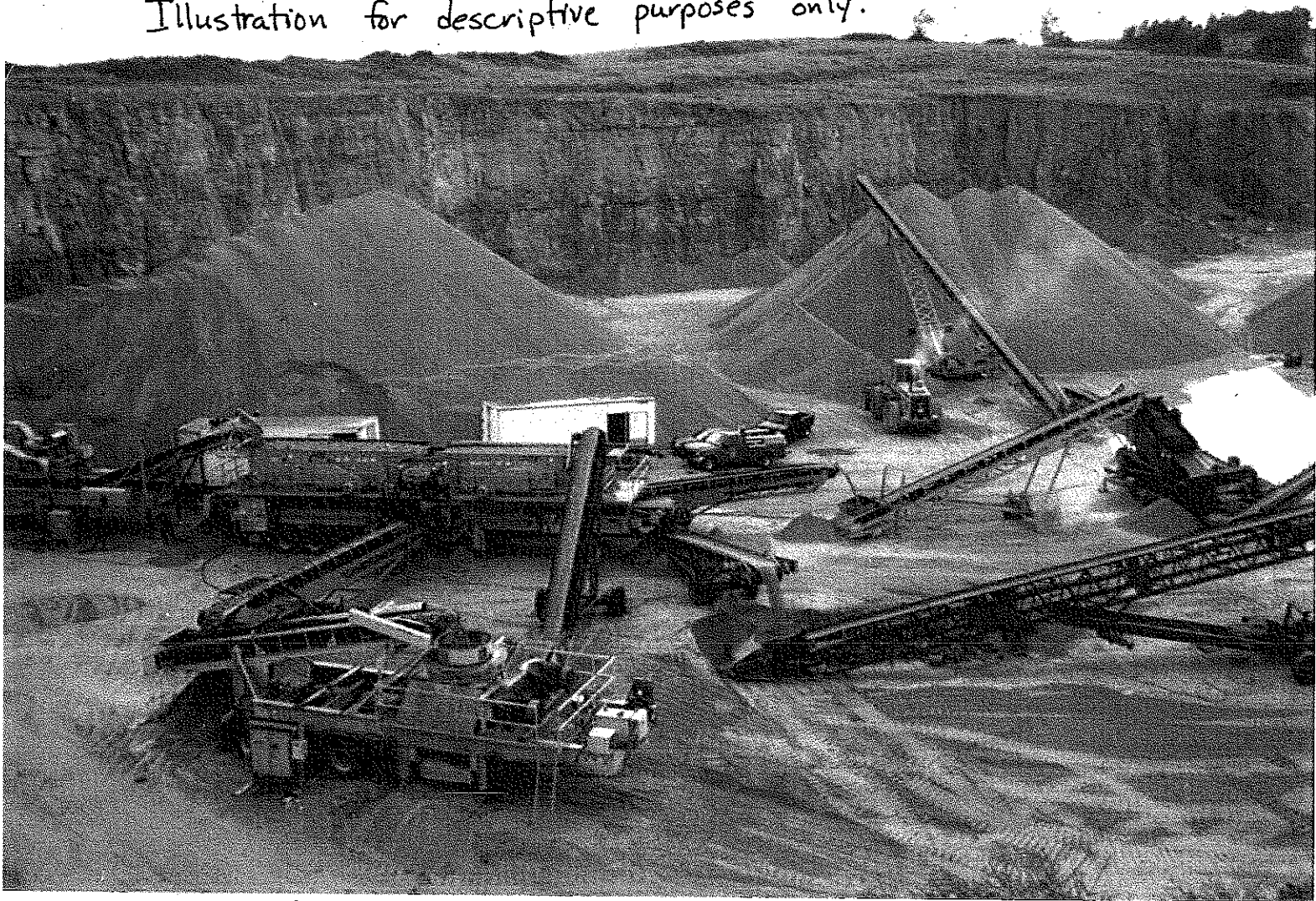
All land not needed for production will remain in agricultural production. Great care will be taken to ensure that Crazy Acres can farm the majority of the land surrounding the quarry operations. When enough rock has been excavated, the reclamation process will begin and will be in a South to North pattern.

Thank you for taking the time to discuss these issues. If you see any other issues or concerns, please contact me directly.

Sincerely,

Timothy J. Geoghegan

Illustration for descriptive purposes only.



Typical Yahara Materials, Inc. crushing plant set up in Limestone Quarry .

Jaw Crusher

Cone Crusher

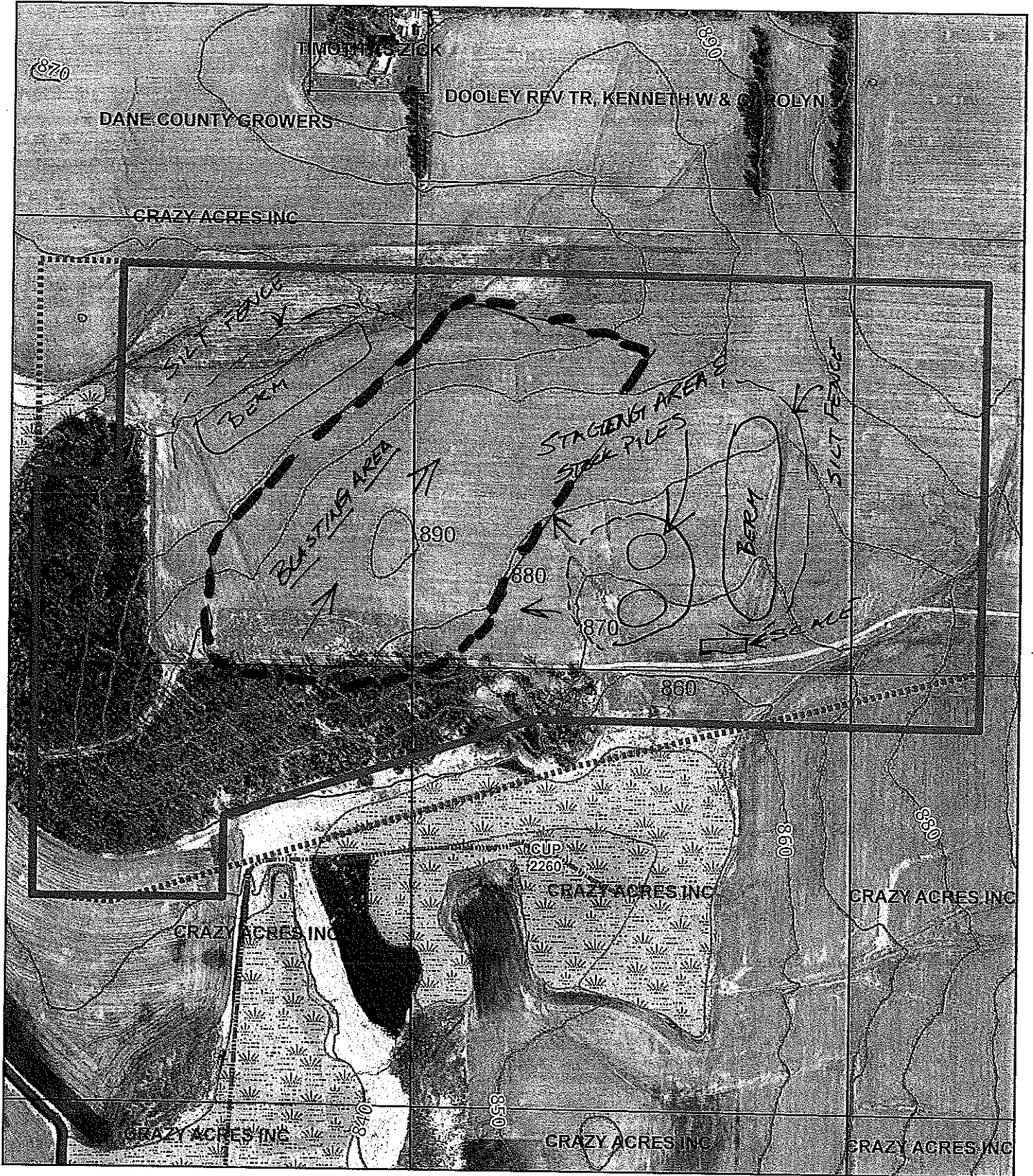
Screening Plant

Conveyors

Generator


End Loaders

Operations Plan 3-21-2014



Legend

 Wetland

 Original proposed boundary

 Revised Boundary



CUP 2260
Crazy Acres LLC

