

Final Plat - Pope Farm Estates

City of Madison

Plat consists of 20 lots, 39.85 acres.

Parks - None shown.

Parkways -

Expressways - N/A

Major Highways - Old Sauk Road to the south.

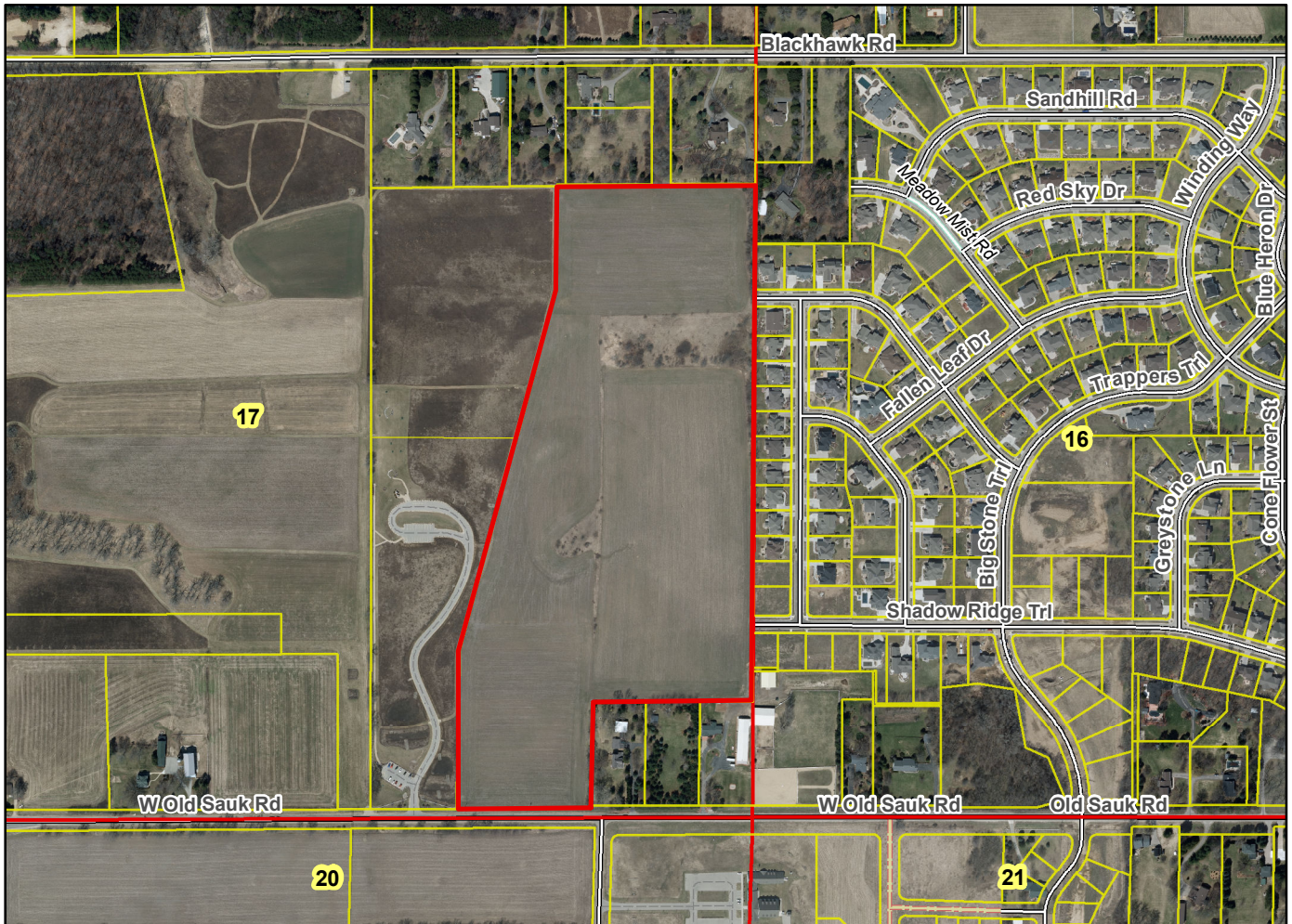
Airports - Dane County Regional

Drainage Channels - All lots are subject to public easements for drainage purposes.

Schools - established

Other Development - OL 1, 3 and 4 being dedicated to the public for stormwater management.

Plats of subdivisions located in all other incorporated municipalities shall be submitted to the committee, as provided by section 236.12(2)(b) of the Wis. Stats., for the purpose of determining whether the committee has any objection to the plat. The basis for any objection to any such plat shall be that the plat conflicts with parks, parkways, expressways, major highways, airports, drainage channels, schools or other planned public developments.



Motion to certify with no objections: _____, Second: _____ Vote: _____