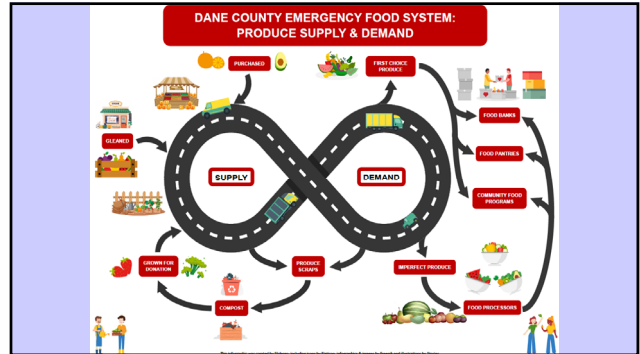


Dane Co Parks Commission – Jan 2023



<https://www.foodpantrygardens.org/>

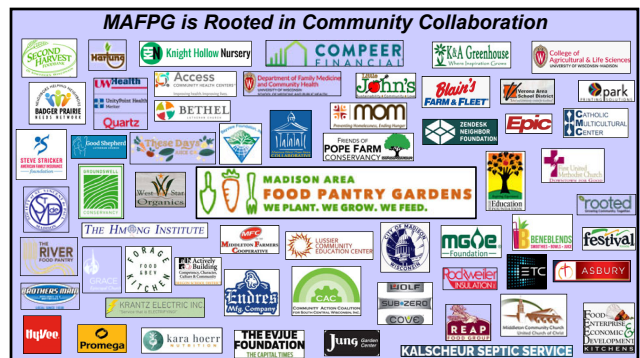


Wisconsin EATS Healthy

- Enhanced** nutrition security for all
- Amplified** partnerships & collaboration
- Transformed** regional food system
- Sustainable** practices & economic stability



Adapted from www.cdc.gov/CHnav



Our Roots

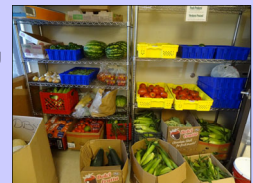


Ken Witte & Emmett Schulte founded MAFPG in 2000



Our Mission

- Create nutrition security in Dane County
- “Striving to help our neighbors by providing local food pantries with first-choice, fresh, nutritious, and culturally relevant produce.”



Our Model

- We Clean.** – Collect local farm & market surplus
- We Grow.** – 10 locations
- We Feed.** – Over 100,000 pounds per year donated to 30 sites in the Dane Co emergency food system (**Over 2 million pounds in 22 years!**)

Logos: Knight Hollow Nursery, Rain's Farm & Fleet, FOOD CHARTER, Jung, K&A Greenhouse, Madison Public Corporation, River Area, Community & Outreach, Activity Building, Community & Outreach, River Area, Michael Binkley.

Map: FIND THE MADISON AREA FOOD PANTRY GARDENS

Madison Area Food Pantry Gardens logo: WE PLANT. WE GROW. WE FEED.

Our Volunteers

- 2,004 in 2022 (13,000 in 22 years)
- 10,055 hours in 2022
- Community members, churches, businesses, students, civic groups
- Welcoming environment for all ages, all experience, all abilities

Madison Area Food Pantry Gardens logo: WE PLANT. WE GROW. WE FEED.

Our Yields

- 100% of our produce is donated
- 2022: 118,629 pounds (↑ 5% from '22)
- Over 2 million pounds in 22 years!

Madison Area Food Pantry Gardens logo: WE PLANT. WE GROW. WE FEED.

Produce survey (Striving to deliver food with dignity)

Círculo las verduras (1 de cada fila) que le gustaría recibir de este sitio. Los Jardines de la Despensa de Alimentos del Área de Madison produce cultivación en el 2021. ¡Gracias por participar!

Arrugala				
Espárragos				
Albahaca				
Melón amargo				
Betabeles - remolachas				
Repollo chino				
Brócoli				

Madison Area Food Pantry Gardens logo: WE PLANT. WE GROW. WE FEED.

Distributing to 30 Sites & Growing

- Allied Wellness Center (**New**)
- Badger Prairie Needs Network
- Bayview Foundation
- Belleville Food Pantry
- Bethel Lutheran Church
- Cardinal Nest Middleton High School (**New**)
- Catholic Multicultural Center
- Community Action Coalition Food Bank
- Elver Park Neighborhood Center (**New**)
- Extended Hands Mobile Food Pantry
- First United Methodist Church Pantry
- Good Shepherd Food Pantry
- Grace Episcopal Church Food Pantry
- Healthy Food for All / FEED Kitchens
- Heights Unlimited Comm. Resource Center
- LCEC Grab and Go Cooler (**New**)
- Little John's Kitchens
- Lussier Community Education Center
- Madison College Food Pantry (**New**)
- MCPASD Weekend Food Program
- Meadowood Neighborhood Center
- Middleton Outreach Ministry (MOM)
- Middleton Youth Center
- Neighborhood House Community Center
- St. Mark's Lutheran Church Pantry
- St. Vincent de Paul Food Pantry
- The Hmong Institute
- The River Food Pantry
- The Vine Church Food Pantry (**New**)
- Waunakee Food Pantry

Madison Area Food Pantry Gardens logo: WE PLANT. WE GROW. WE FEED.

Food pantry garden to steamer bag

- 800 steamer bags of broccoli, cauliflower, & green beans
- Many hands make light work – numerous community partners!

Madison Area Food Pantry Gardens logo: WE PLANT. WE GROW. WE FEED.

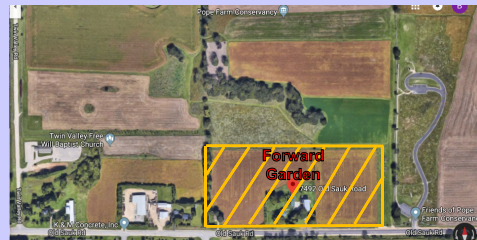
Forward Garden at the Pope Farm Homestead



*A Generational Opportunity
Rooted in Community Collaboration*



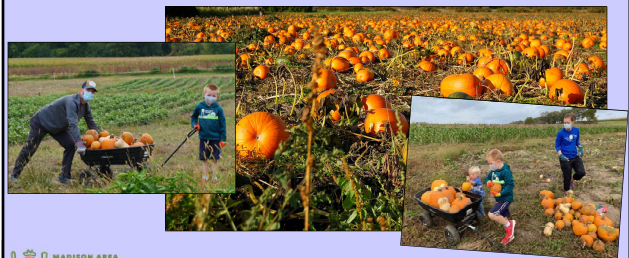
15-Acre Pope Farm Homestead



A conservancy, Ag research station, & 1500 kids next door!

<https://maps.soo.wisc.edu/Parcels/>

Joint fundraiser for MCPASD PTO



Productive 1st Years @ Forward Garden!

Inaugural year – 2020:

- Farm manager hired
- 25,000 pounds (2.4 acres)
- 300 volunteers, 2,300 hours
- New walk-in cooler
- Chickens!

Most recent – 2022:

- 29,000 pounds (3 acres)
- 48 culturally relevant crops
- 1500 volunteers, 3,800 hours
- Improved irrigation system
- Barn improvements
- More chickens!



Compost collection pilot

Logistics

- Pre-consumer waste (no sorting)
- MAFPG supplies 3.5g buckets & Gamma Seal lids
- MAFPG picks up 2x / week (w/in 2 miles of Forward Garden)
- 14,500 pounds year 1 (2022)
- 35,000 pounds expected in 2023

2023 Pilot Participants:

