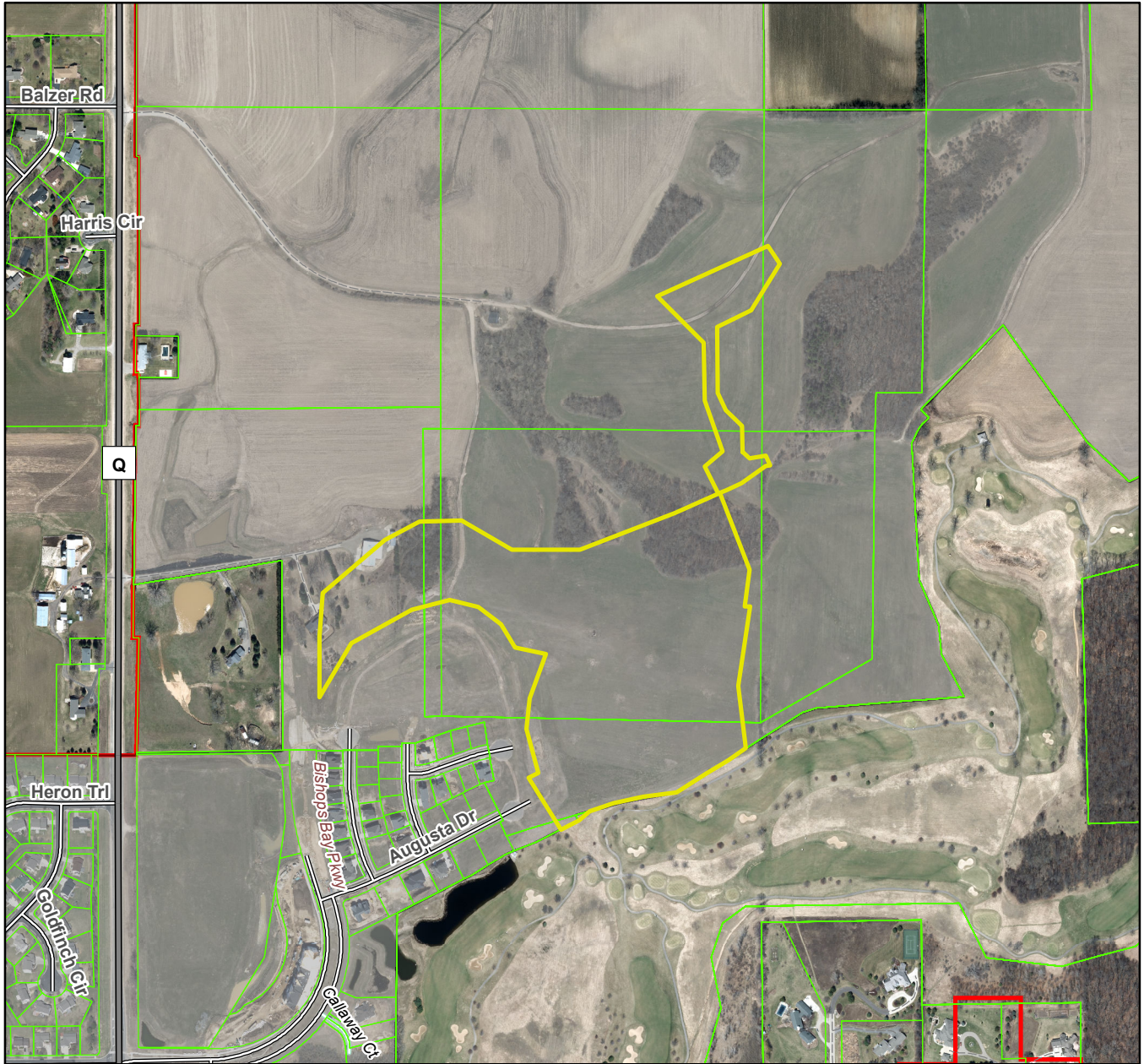


**The Community of Bishops Bay,
The Back Nine - Phase 3
City of Middleton T08N R09E, Section 31/32**



Plat consists of 38 lots, 6 outlots, 28.1 acres.

Parks – OL 6 (7.6 acres) to be dedicated to the public for park purposes.

Parkways – N/A

Expressways – N/A

Major Highways –CTH Q to the west.

Airports – Dane County Regional Airport (13 mi)

Drainage Channels – Drainage areas shown throughout the plat and all lots within the plat are subject to a 10' private easement for drainage purposes.

Schools – Established.

Other Planned Public Improvements - OL 7-12 are private lots and designated for stormwater management purposes and open space.