



PHOTO LOCATION DESCRIPTION:

NORTH PHOTO SIM
- TAKEN FROM THE END OF W BADGER RD
APPROXIMATE ELEVATIONS (PER GOOGLE EARTH)
- PHOTO ELEVATION: 875'
- TOWER ELEVATION: 887.7'
APPROXIMATE DISTANCE FROM PHOTO LOCATION TO PROPOSED TOWER: 775'

EAST PHOTO SIM
- TAKEN FROM THE PARKING LOT EAST OF PROPOSED TOWER.
APPROXIMATE ELEVATIONS (PER GOOGLE EARTH)
- PHOTO ELEVATION: 889'
- TOWER ELEVATION: 888.7'
APPROXIMATE DISTANCE FROM PHOTO LOCATION TO PROPOSED TOWER: 750'

SOUTH PHOTO SIM
- TAKEN FROM ALONG W BELTLINE ACCESS RD.
APPROXIMATE ELEVATIONS (PER GOOGLE EARTH)
- PHOTO ELEVATION: 900'
- TOWER ELEVATION: 888.7'
APPROXIMATE DISTANCE FROM PHOTO LOCATION TO PROPOSED TOWER: 300'

WEST PHOTO SIM
- TAKEN FROM THE END OF W BADGER RD
APPROXIMATE ELEVATIONS (PER GOOGLE EARTH)
- PHOTO ELEVATION: 885'
- TOWER ELEVATION: 888.7'
APPROXIMATE DISTANCE FROM PHOTO LOCATION TO PROPOSED TOWER: 600'

PHOTO SIMULATION NOTES:

- THESE PHOTO SIMULATIONS ARE AN INTERPRETATION OF THE GENERAL APPEARANCE OF THE PROPOSED INSTALLATION. EACH PHOTO SIMULATION IS BASED ON THE SCALING CRITERIA OR ASSUMPTIONS IDENTIFIED
- THE FINAL TOWER DESIGN AND DIMENSIONS WERE NOT AVAILABLE AT THE TIME THE PHOTO SIMULATION WAS PREPARED. THEREFORE, A TYPICAL TOWER/ANTENNA OF SIMILAR SIZE WAS UTILIZED FOR SIMULATION PURPOSES
- AN OBJECT OF KNOWN HEIGHT WAS NOT AVAILABLE FOR REFERENCE IN THE DIRECT VICINITY OF THE TOWER LOCATION, LIMITING RELIABILITY OF THE HEIGHT INTERPRETATION
- THE HORIZON LINE AT THE PROPOSED TOWER BASE IS NOT VISIBLE; A HORIZON LINE HAS BEEN ESTIMATED AT THE TOWER BASE FOR THE PHOTO SIMULATIONS
- PHOTO SIMULATIONS GENERATED USING A SIMILAR TOWER OF SIMILAR HEIGHT AT A SIMILAR DISTANCE; ARTISTIC INTERPRETATIONS UTILIZED TO ESTIMATE THE APPROXIMATE TOWER SIZE AND APPEARANCE
- THE DIFFERENCE IN ELEVATION BETWEEN THE PHOTOGRAPH LOCATION AND TOWER LOCATION HAS BEEN TAKEN INTO CONSIDERATION
- THE TOPOGRAPHICAL FEATURES BETWEEN THE PHOTOGRAPH LOCATION INTERPRETED AS BEST AS POSSIBLE. THE VISIBILITY OF THE TOWER WILL BE DRAMATICALLY REDUCED WITHIN AREAS OF MATURE VEGETATION AND VALLEYS AND INCREASED WITHIN LARGE OPEN FIELDS AND AT HIGHER ELEVATIONS

SHEET TITLE

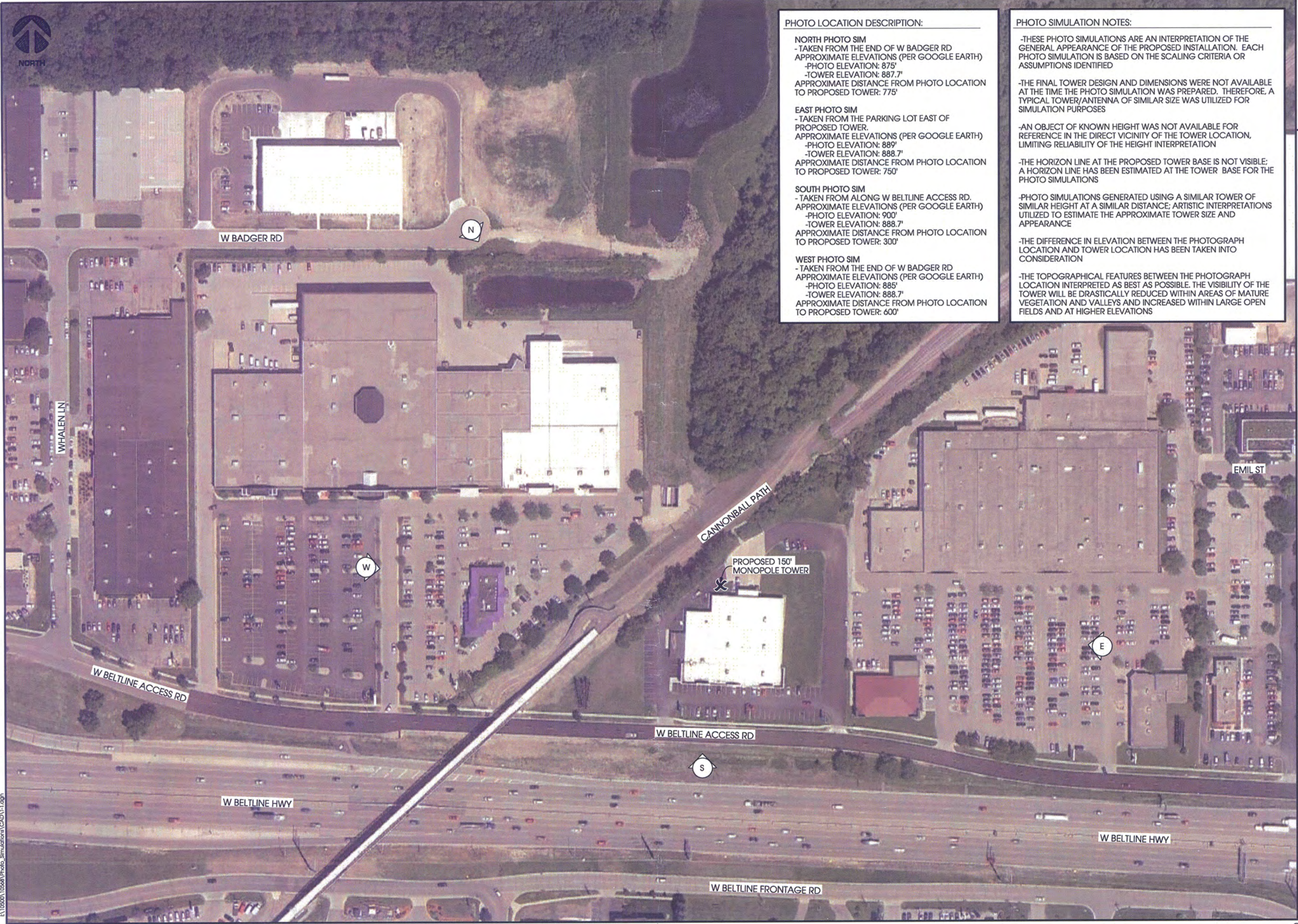
ISSUE DATE:
PHOTO SIMULATIONS - 11/05/2014

REVISIONS:

DRAWN BY:
DGS
 CHECKED BY:
DCL
 PLOT DATE:
11/5/2014
 PROJECT #:
10568
 FILE NAME:
T-1.dgn

SHEET NUMBER

T-1

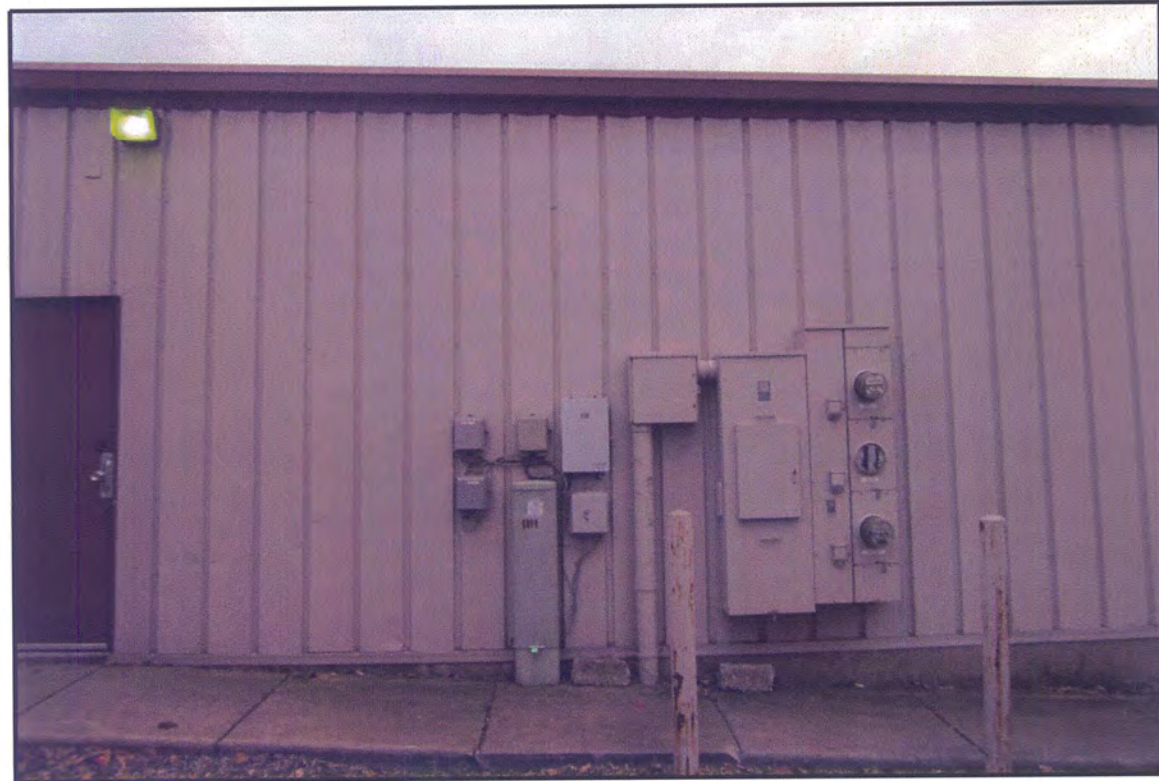




LOOKING NORTH



LOOKING EAST



LOOKING SOUTH



LOOKING WEST

FROM TOWER BASE
BELTLINE & FISH HATCHERY [782570]
MADISON, WISCONSIN

SHEET TITLE:

ISSUE DATE:
 PHOTO SIMULATIONS - 11/05/2014

REVISIONS:

DRAWN BY:
 DGS
 CHECKED BY:
 DCL
 PLOT DATE:
 11/5/2014
 PROJECT #:
 10568
 FILE NAME:
 PS-1.dgn

SHEET NUMBER:

PS-1



FROM NORTH



FROM EAST



FROM SOUTH



FROM WEST

FROM ADJACENT PROPERTIES
BELTLINE & FISH HATCHERY (782570)
MADISON, WISCONSIN

SHEET TITLE:

ISSUE DATE:
 PHOTO SIMULATIONS - 11/05/2014

REVISIONS:

DRAWN BY:

DGS

CHECKED BY:

DCL

PLOT DATE:

11/5/2014

PROJECT #:

10568

FILE NAME:

PS-2.dgn

SHEET NUMBER:

PS-2



FROM NORTH



FROM EAST



FROM SOUTH



FROM WEST

**FROM ADJACENT PROPERTIES
 BELTLINE & FISH HATCHERY [782570]
 MADISON, WISCONSIN**

SHEET TITLE:

ISSUE DATE:
 PHOTO SIMULATIONS - 11/05/2014

REVISIONS:

DRAWN BY:
 DGS
 CHECKED BY:
 DCL
 PLOT DATE:
 11/5/2014
 PROJECT #:
 10568
 FILE NAME:
 PS-3.dgn

SHEET NUMBER:

PS-3