

# Joint PP&J and Project (Jail) Review Committee Update



## Dane County Jail Consolidation Project

South Tower Addition &  
Public Safety Building Renovation

October 29, 2019  
DCPW Project #318003

Mead  
& Hunt

Potter  
Lawson  
Success by Design

HR

Gilbane

# AGENDA

- Introductions
- Project Goals
- Project Schedule
- Project Design Updates
- City Approval & Community Engagement
- Next Steps
- Questions



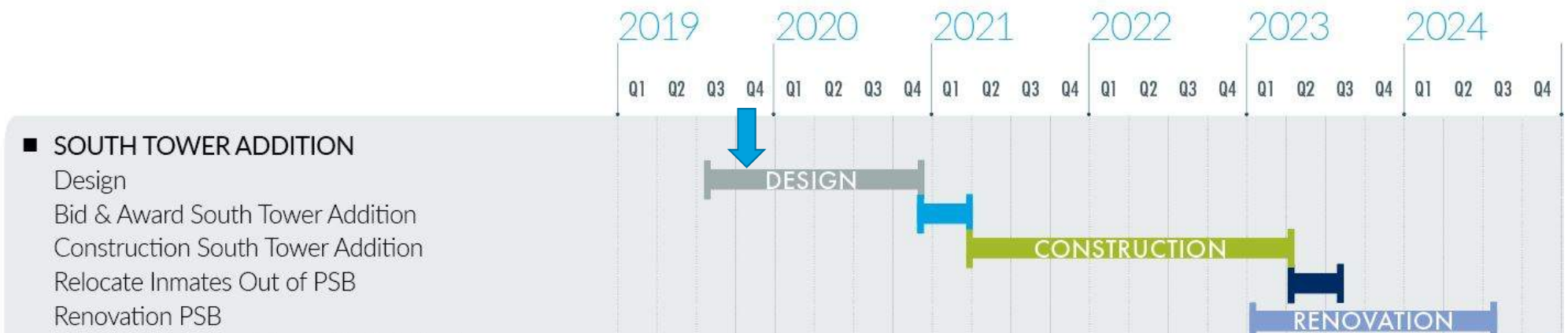
# Project Goals Checklist



	South Tower Addition Option
Provide one consolidated jail facility	✓
Replace the outdated cell blocks in CCB	✓
Provide appropriate medical/mental health space	✓
Eliminate/greatly reduce solitary confinement	✓
Provide visitation at the housing units	✓
Provide multipurpose space to meet spiritual needs of inmates	✓
Provide a downtown location close to the courthouse/bus	✓
Reduce total number of beds	✓
Improve staffing and operational costs	✓
Minimize impact to existing operation during construction	✓
Replace the Ferris Center	✓



# Project Schedule



## Project Update – Schematic Design Progress

- Multiple User & Stakeholder Design Workshops & Meetings
- Design Layouts, Exterior Design, Interior Design, Structural and Utility Systems Engineering
- Visits & Evaluations of Existing Jail Facilities to Inform Design
- Meeting with & Evaluating Detention Equipment (DEC) & Security Electronics (SEC) Contractors / Vendors
- Planning for Prefabricated Modular Steel Cells
- Started City Approval & Community Engagement Process
- Building DCSO Transition Team
- Studying Options for relocating Courthouse Electrical Service / Vault



# Project Update – Schematic Design Progress

## 4th Floor Concept Plan



LEVEL 4 PLAN  
0' 15' 30' 60'

## 4<sup>th</sup> Floor Schematic Design Plan



## Project Update – Schematic Design Progress

Jail visit to see  
open booking



# Project Update – Schematic Design Progress

## Prefab Cell Factory Visit





## Project Update – Schematic Design Progress

### Prefab Cell Factory Visit



## Project Update – Schematic Design Progress

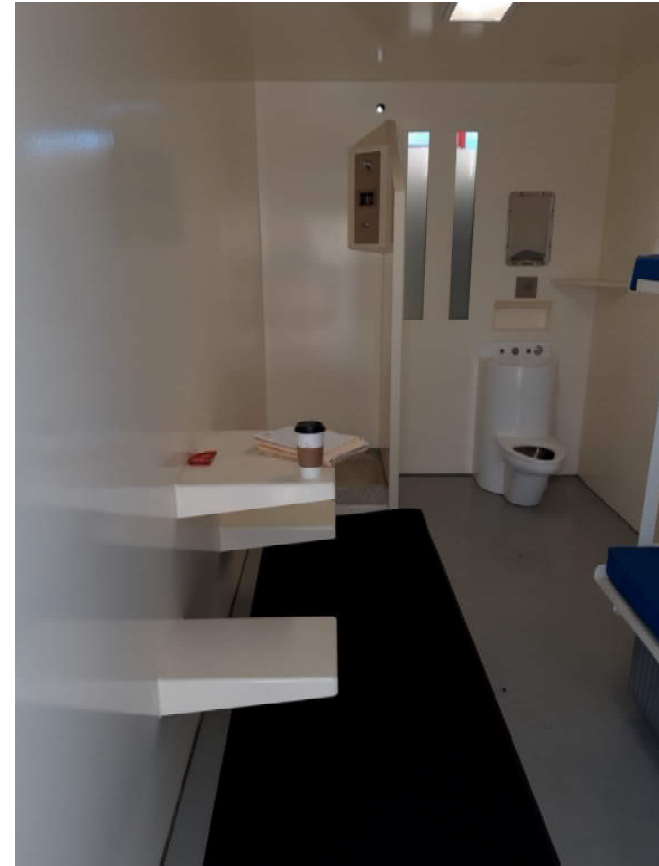


Prefab Cells  
on trucks.



## Project Update – Schematic Design Progress

### Prefab Cells



## Project Update – Schematic Design Progress

Normalized  
Prefab Cell





## Project Update – Schematic Design Progress

### Installation of Prefab Cells



## Project Update – Schematic Design Progress

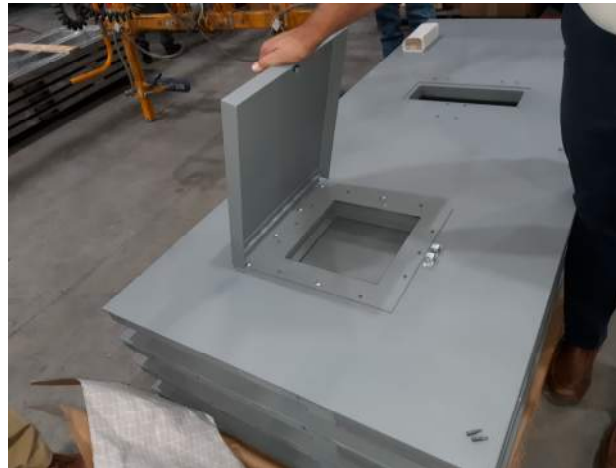
Installation of  
Prefab Cells





## Project Update – Schematic Design Progress

### Detention Door Factory Visit



## Project Update – Schematic Design Progress

Detention  
Plumbing  
Fixture  
Factory Visit





## Project Update – Schematic Design Progress

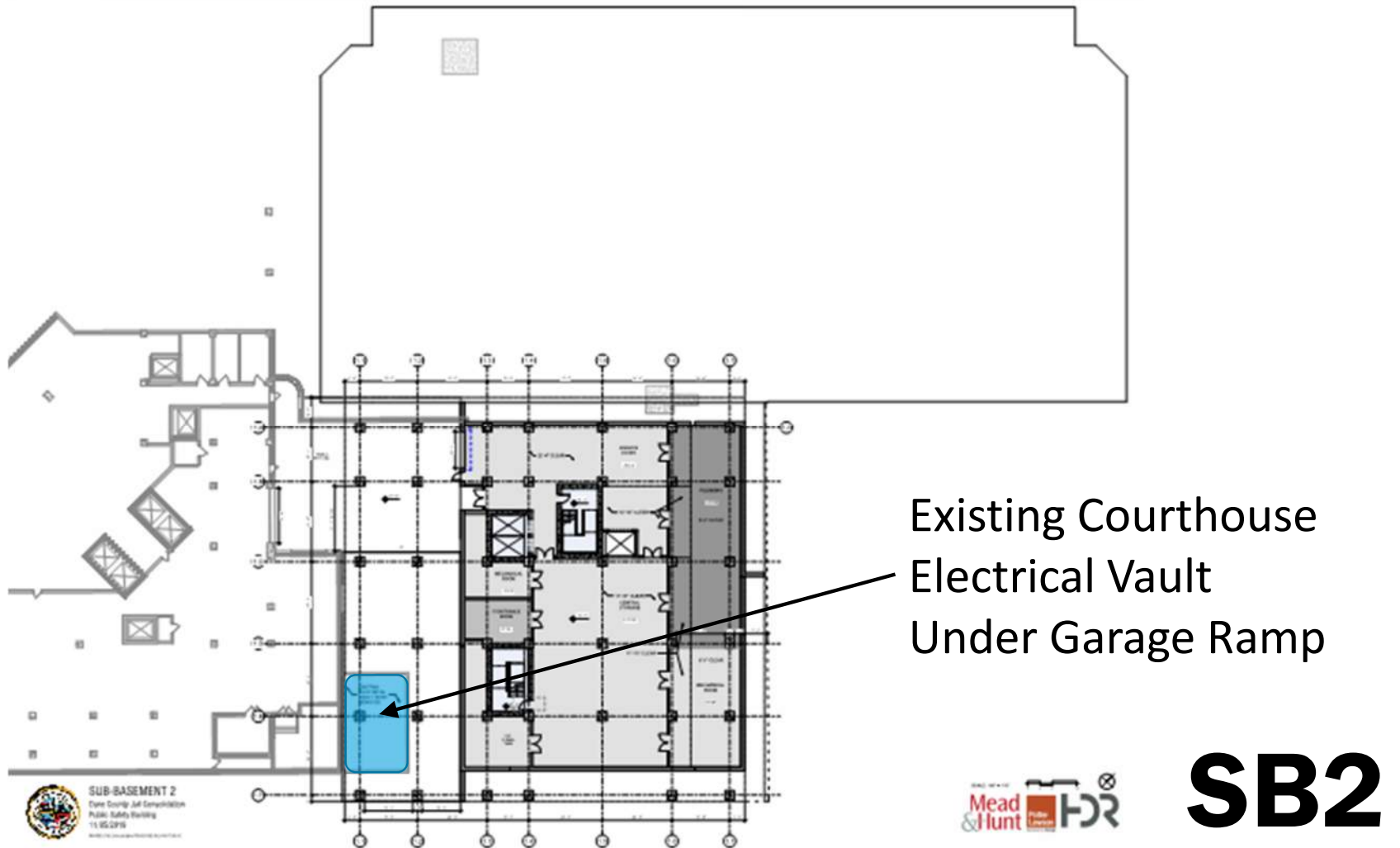
### Water Management Control System



### Door Controls (SEC)



## Project Update – Schematic Design Progress



## Project Update – Schematic Design Progress

### Existing Courthouse Electrical Vault Under Garage Ramp



# Site & Exterior Design

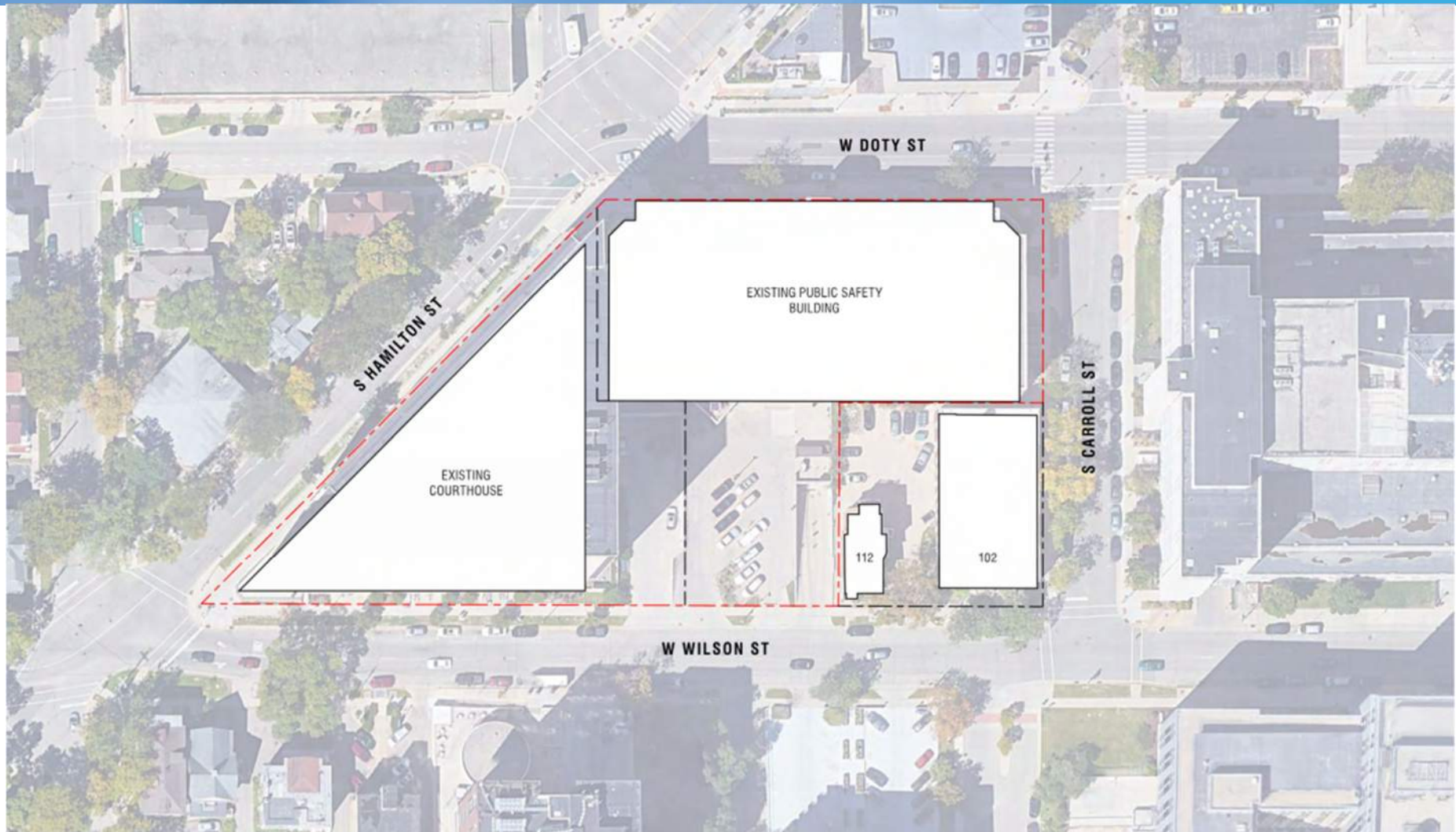


## Project Update – Schematic Design Progress

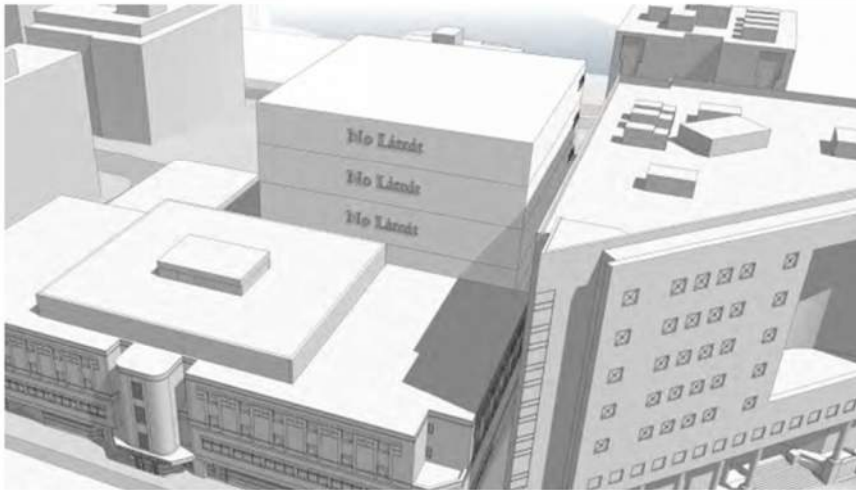
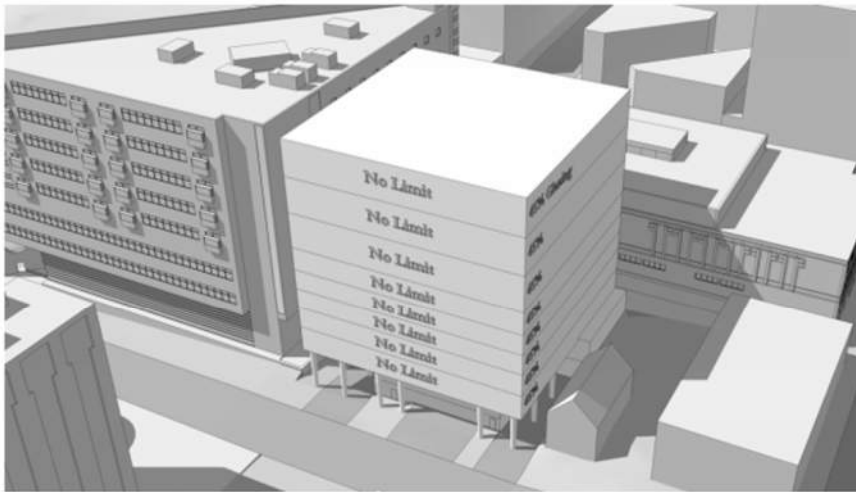




## Project Update – Schematic Design Progress



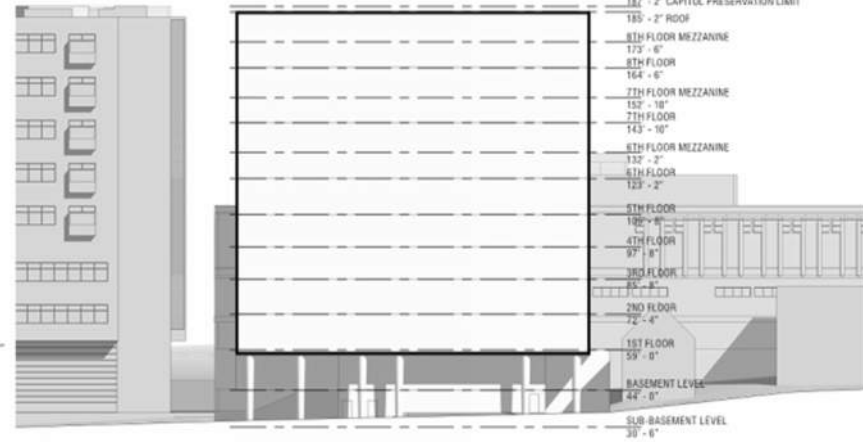
## Project Update – Schematic Design Progress



# Project Update – Schematic Design Progress



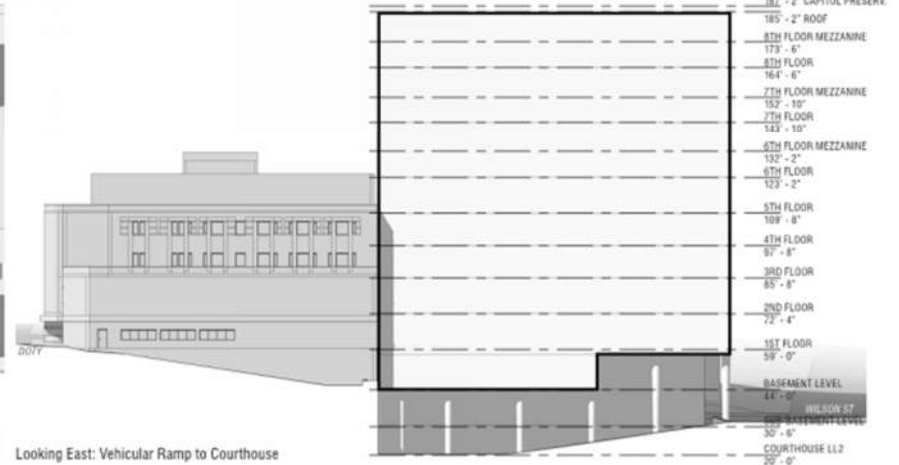
Looking West: Vehicular Ramp to PSB



Wilson Street Elevation



Doty Street Elevation



Looking East: Vehicular Ramp to Courthouse



# Project Update – Schematic Design Progress



## Project Update – Schematic Design Progress

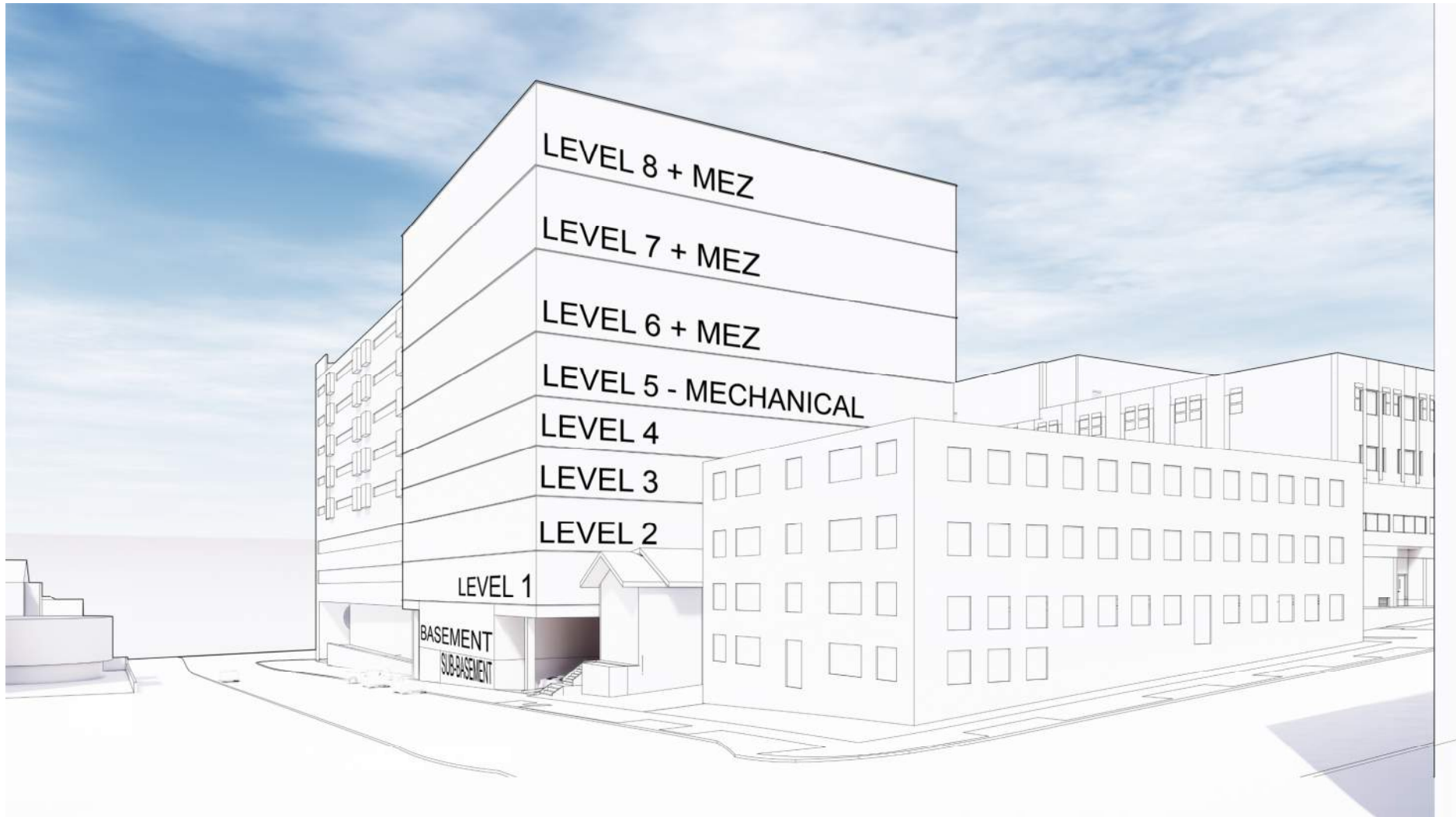


## Project Update – Garage Access Ramps to Courthouse and PSB



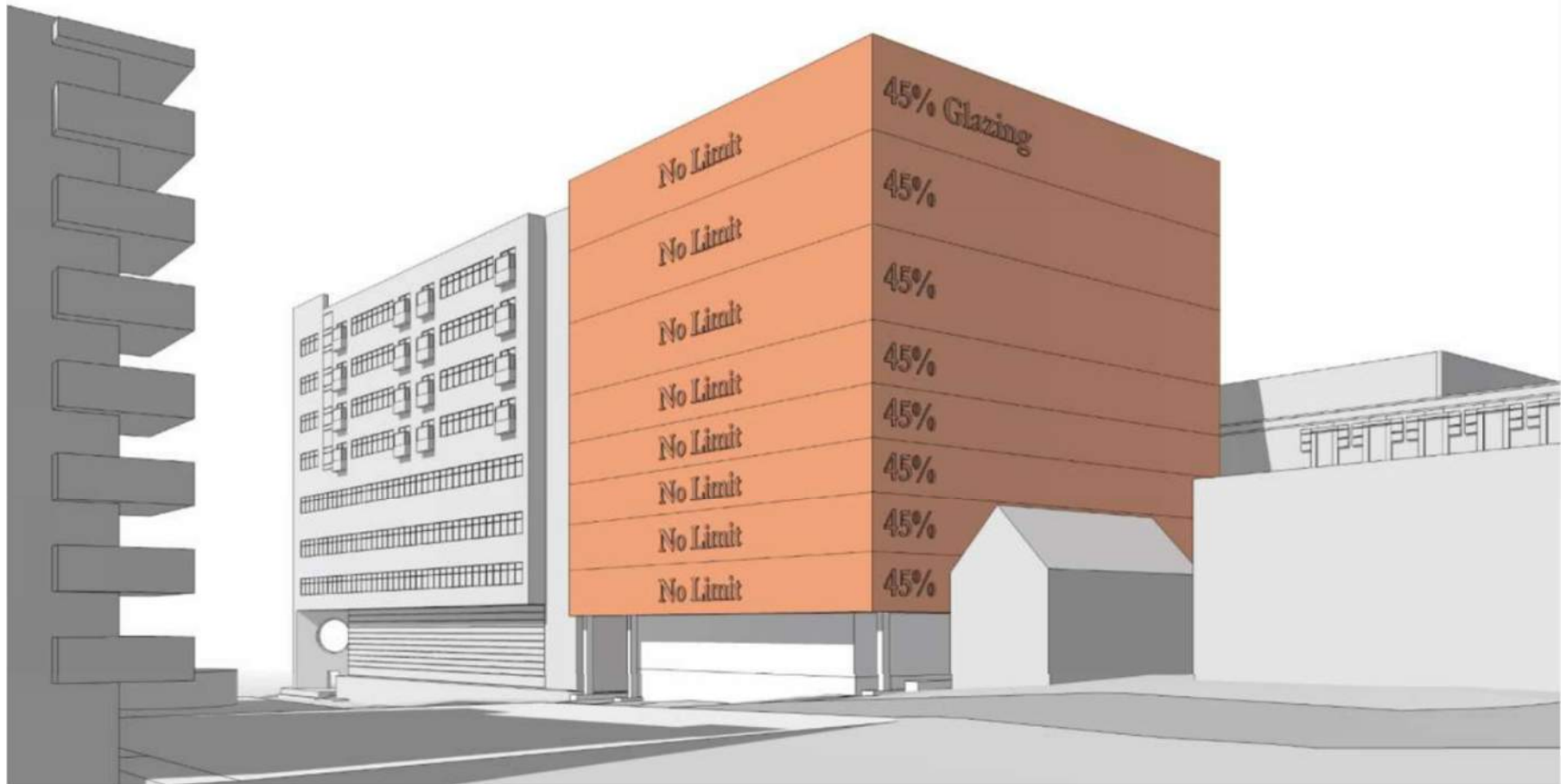


## Project Update – View from Southeast along Wilson Street

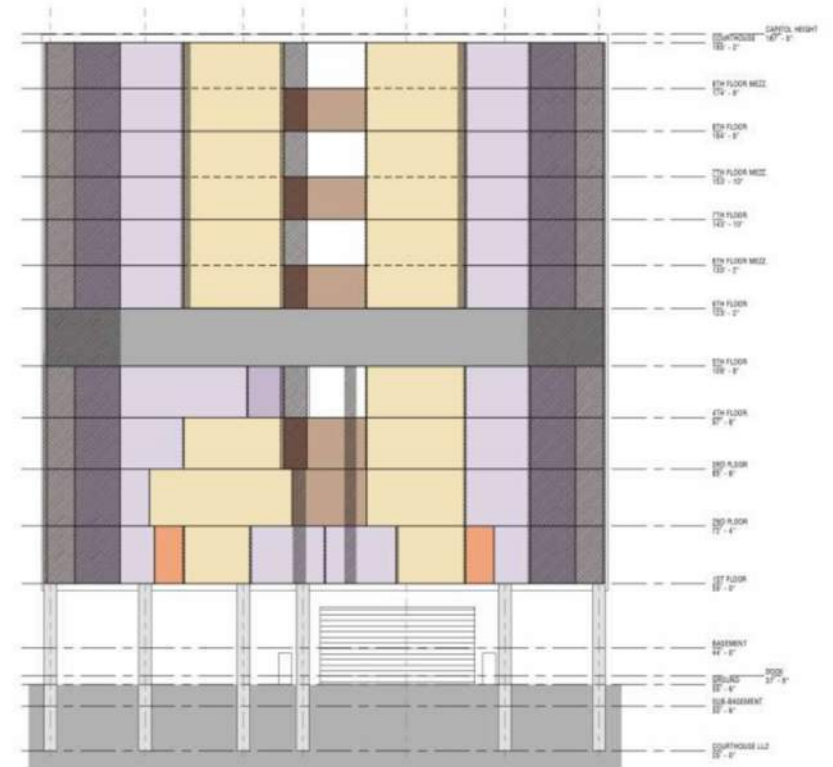




## Project Update – Schematic Design Progress



# Project Update – Schematic Design Progress



# Project Update – Schematic Design Progress



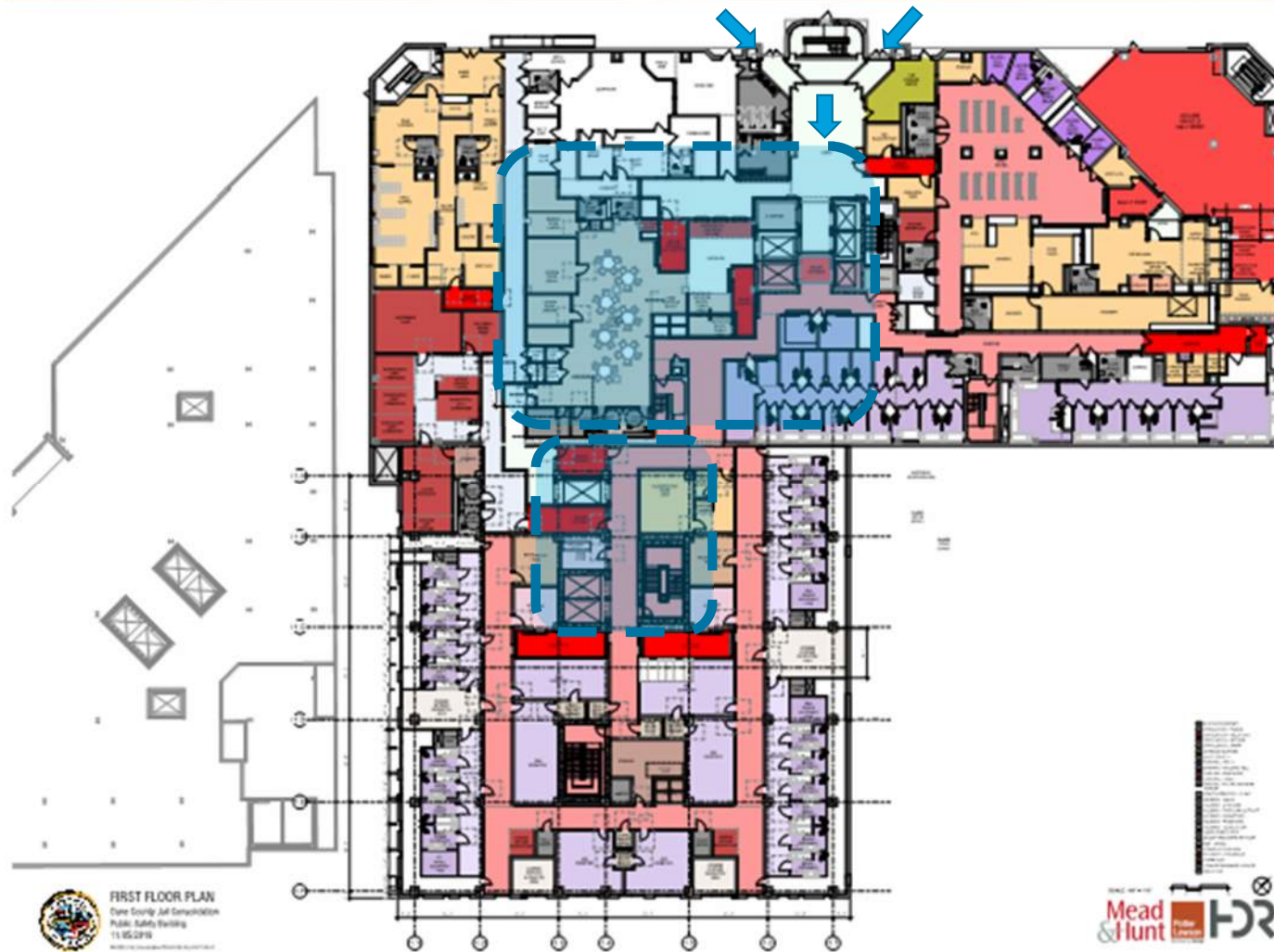
# Visitation



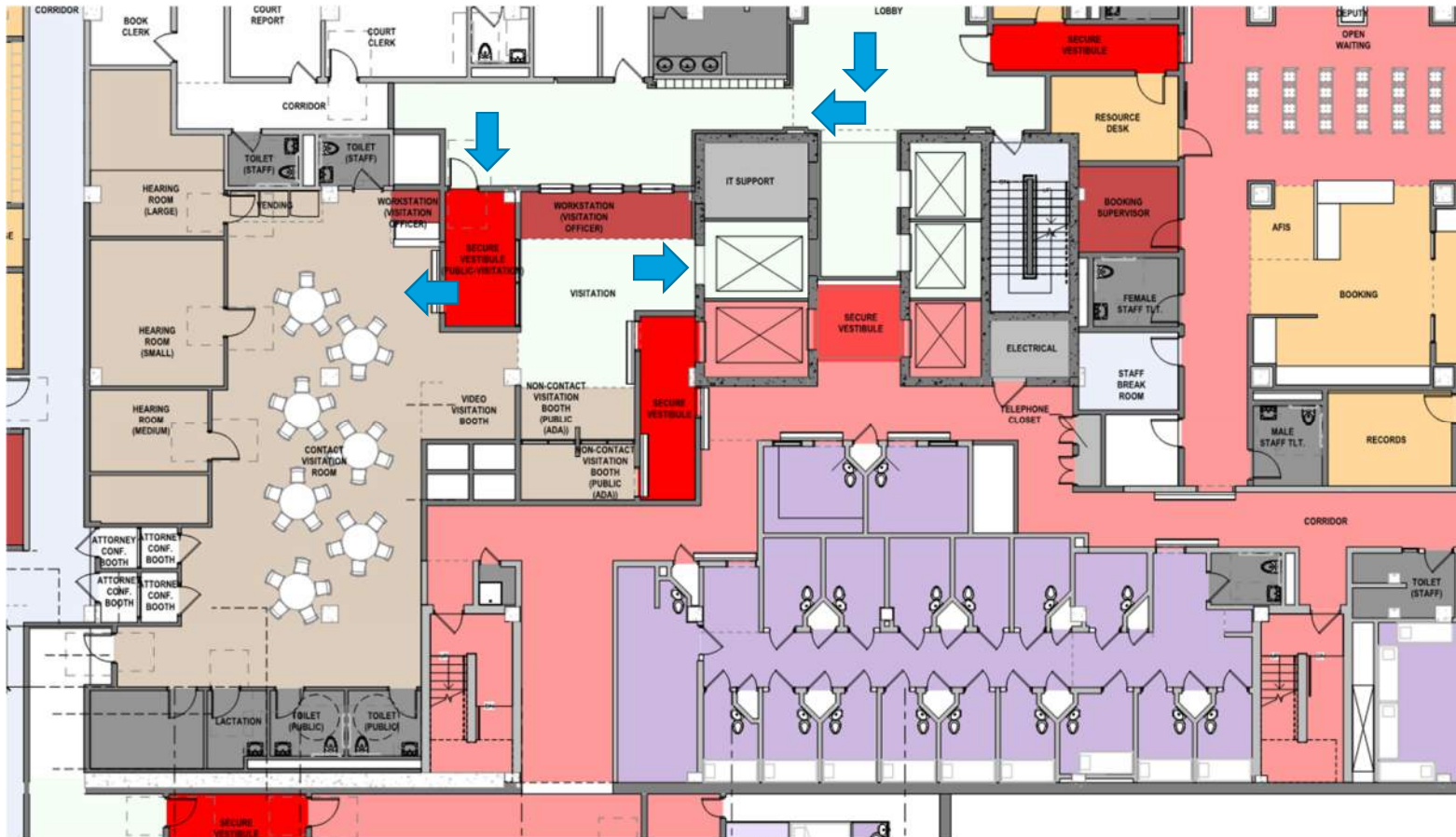
## Project Update – Visitation



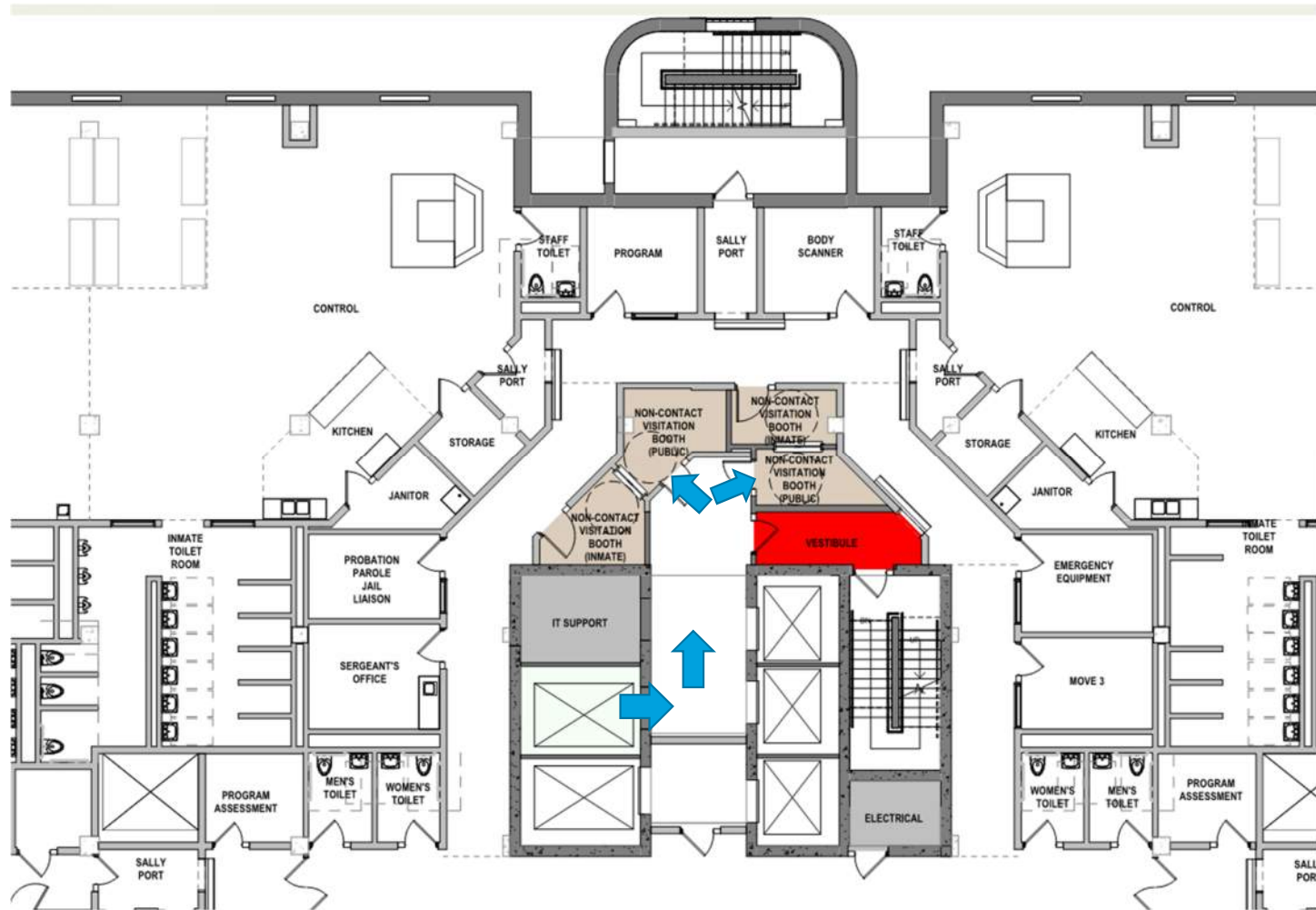
## Project Update – Schematic Design Progress



# Project Update – Schematic Design Progress

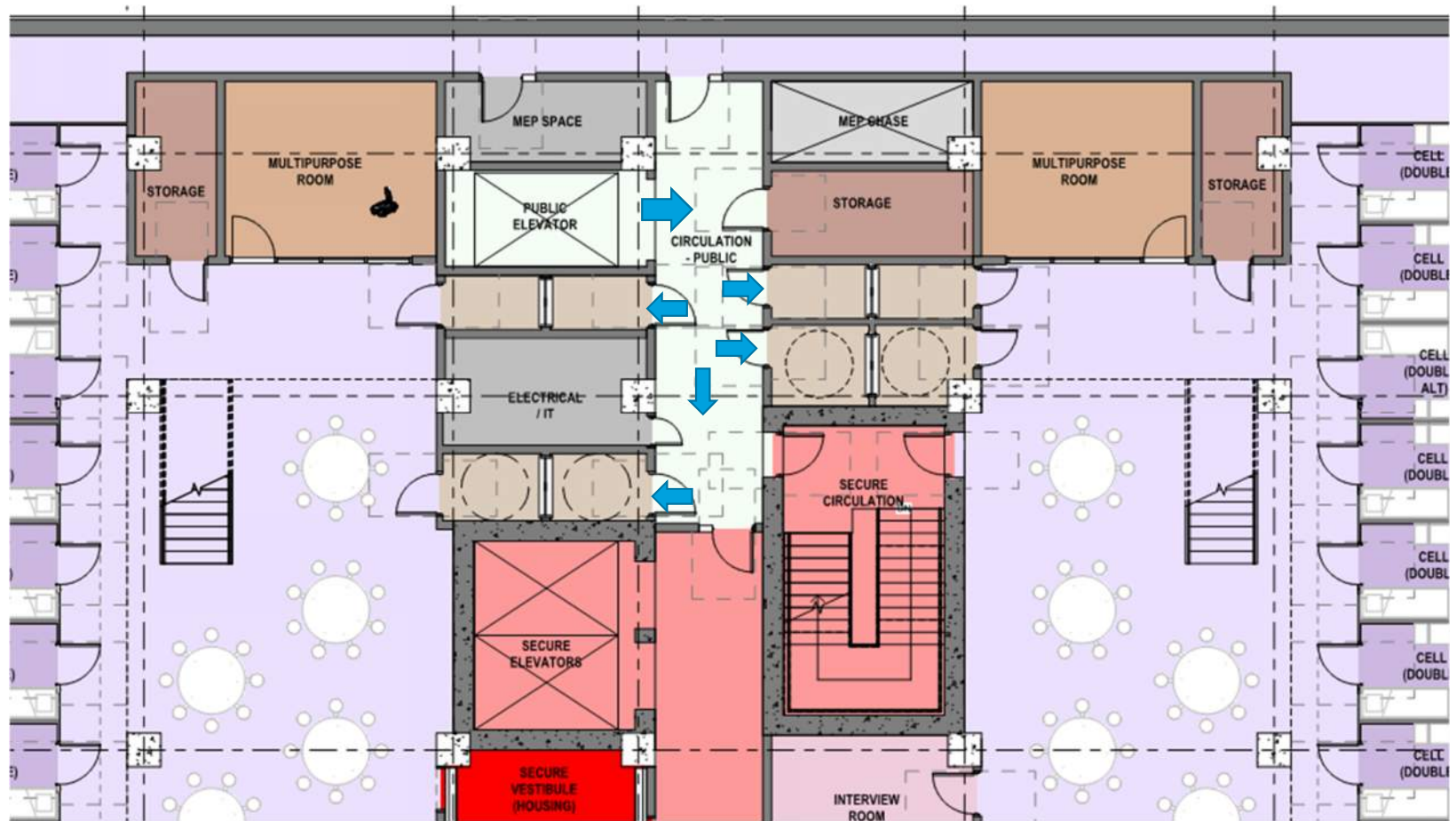


## Project Update – Schematic Design Progress





## Project Update – Schematic Design Progress



# Medical & Mental Health

## Project Update – Schematic Design Progress





# Project Update – Schematic Design Progress

## Male Medical Housing

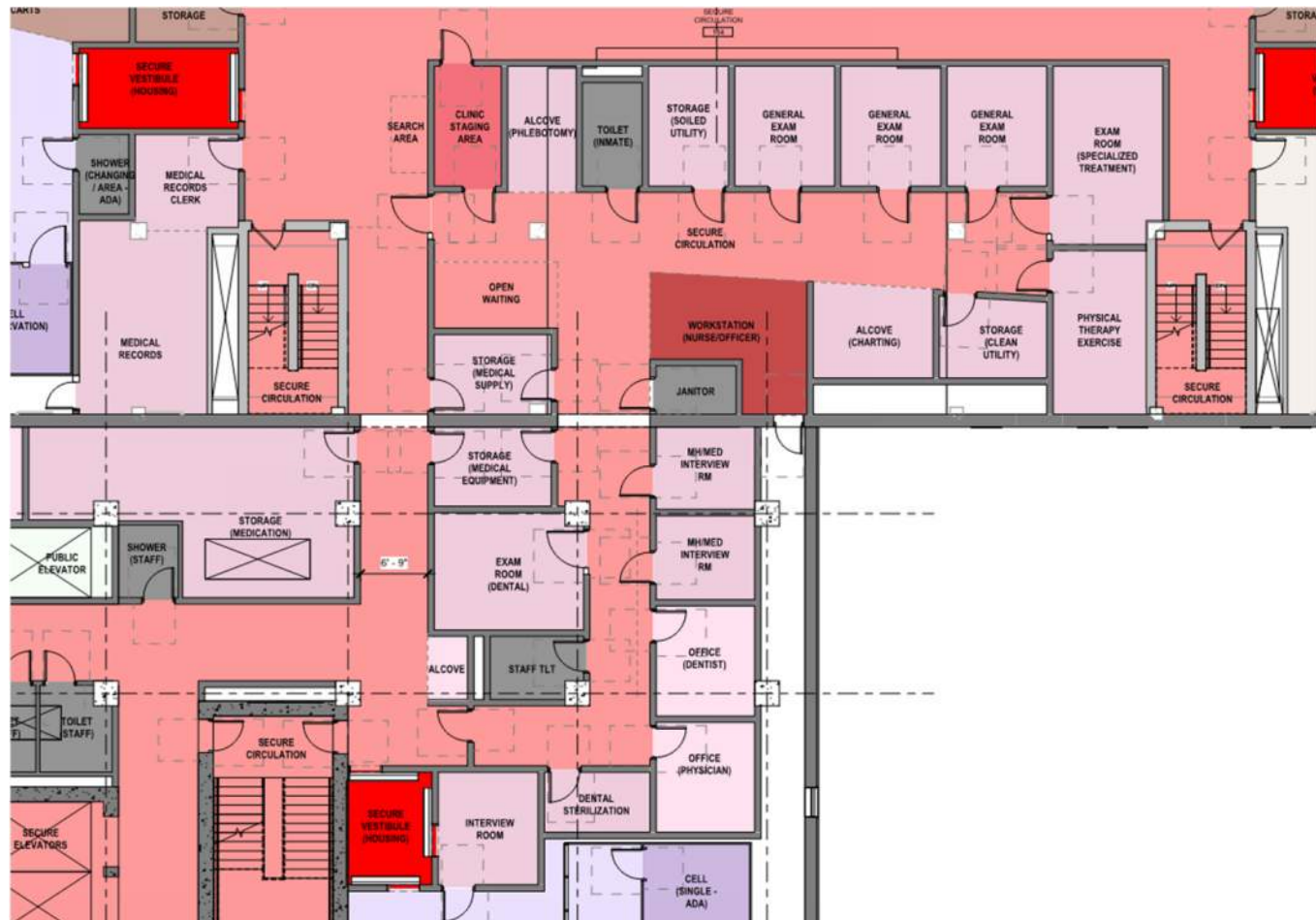


## Project Update – Medical & Mental Health



## Project Update – Schematic Design Progress

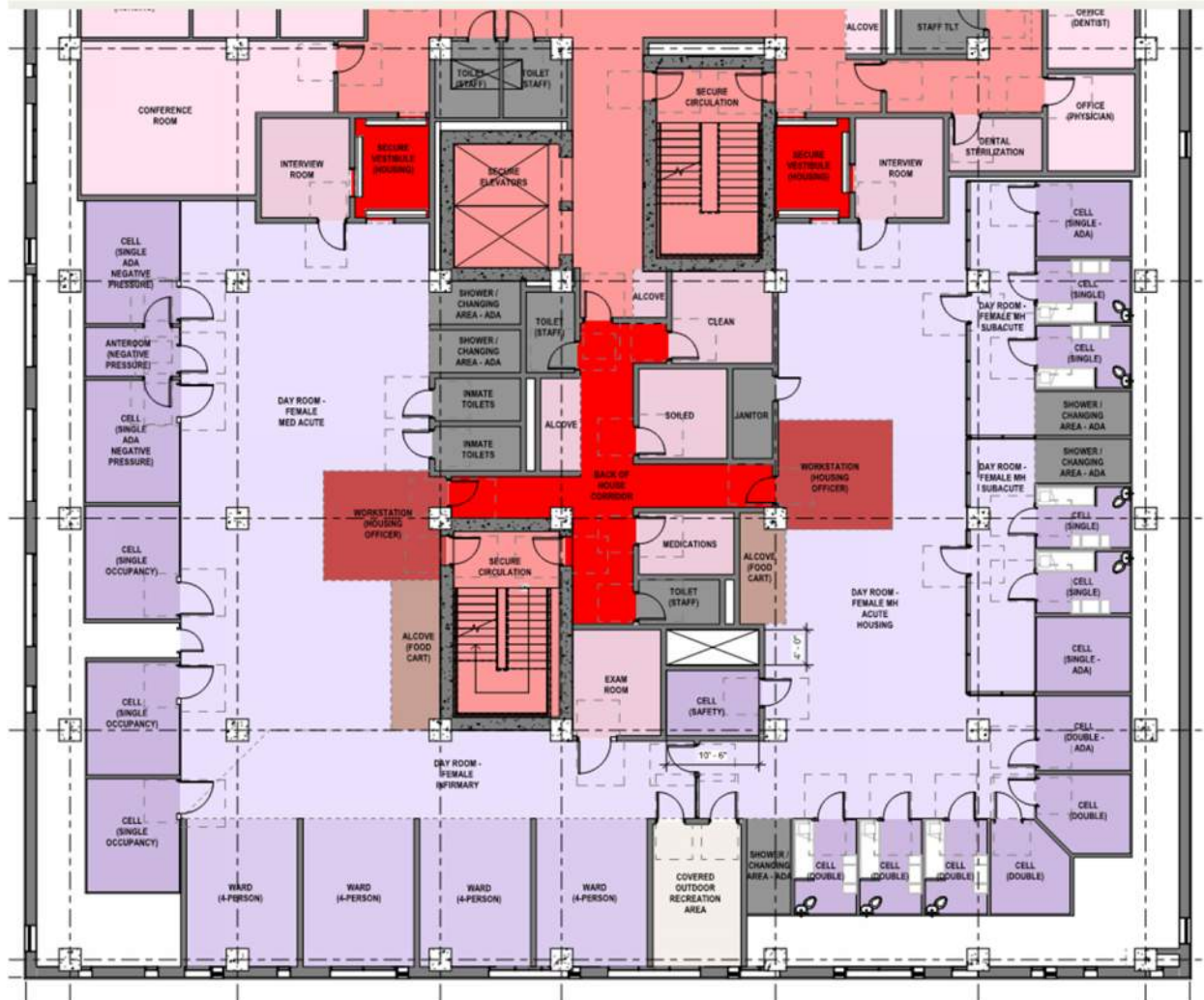
### Medical Clinic





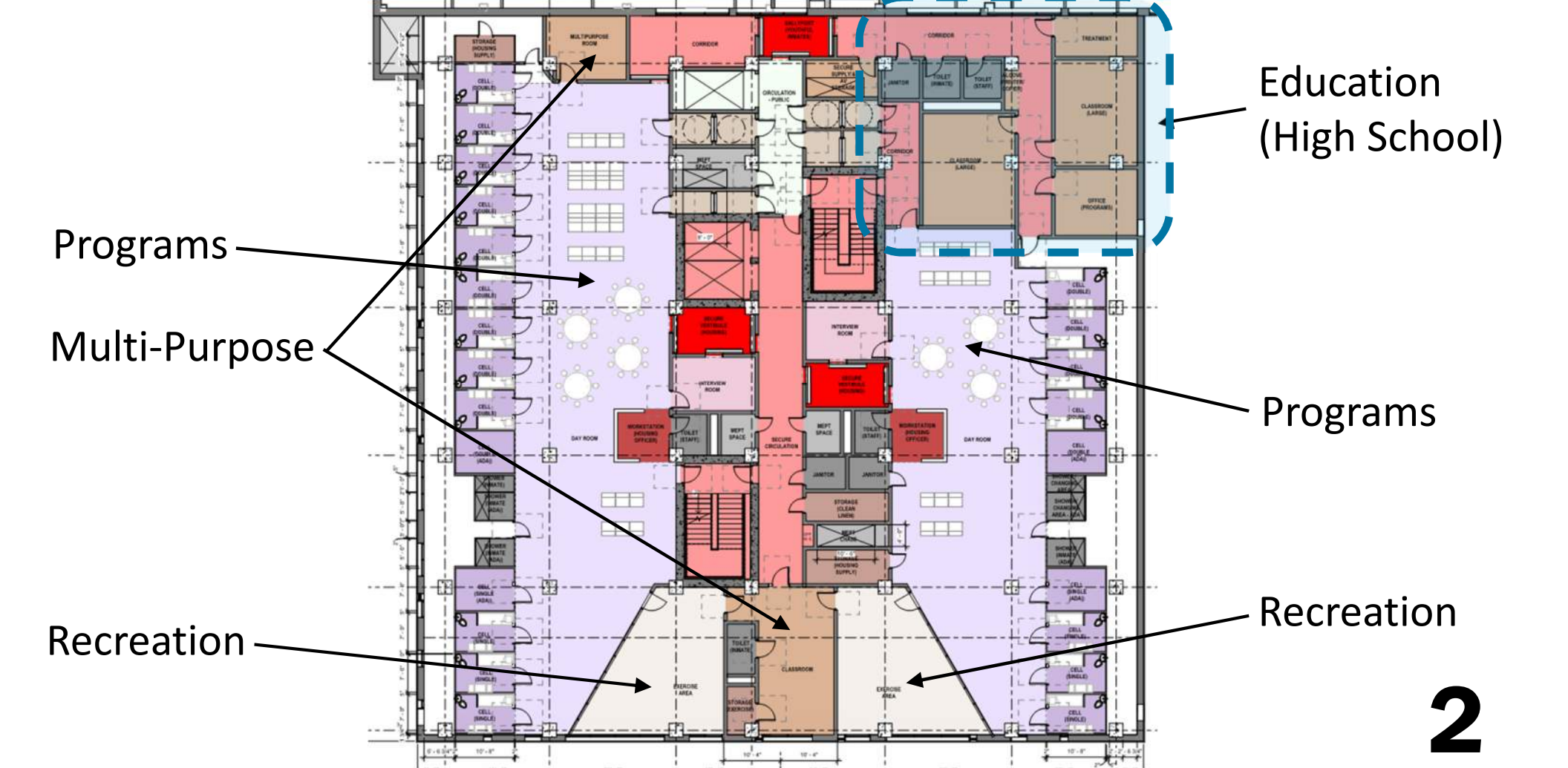
## Project Update – Schematic Design Progress

### Female Medical and MH Housing



# Multi-Purpose Spaces for Programming, Education, Spiritual, and Recreation

## Project Update – Schematic Design Progress





100



## Project Update – Schematic Design Progress

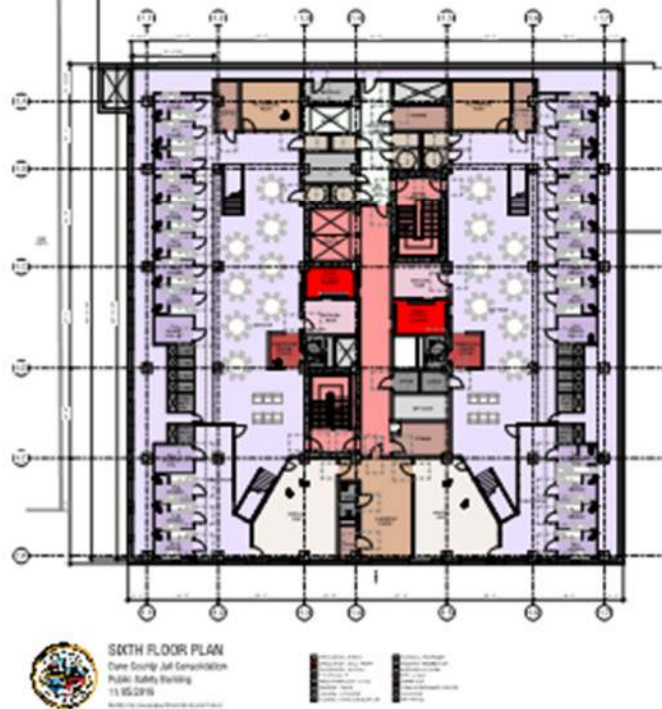


# General Population Housing

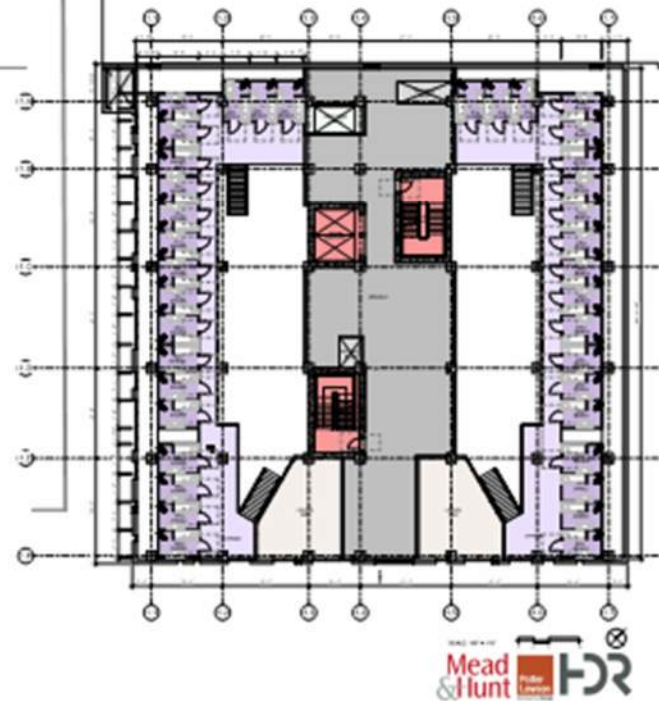


## Project Update – Schematic Design Progress

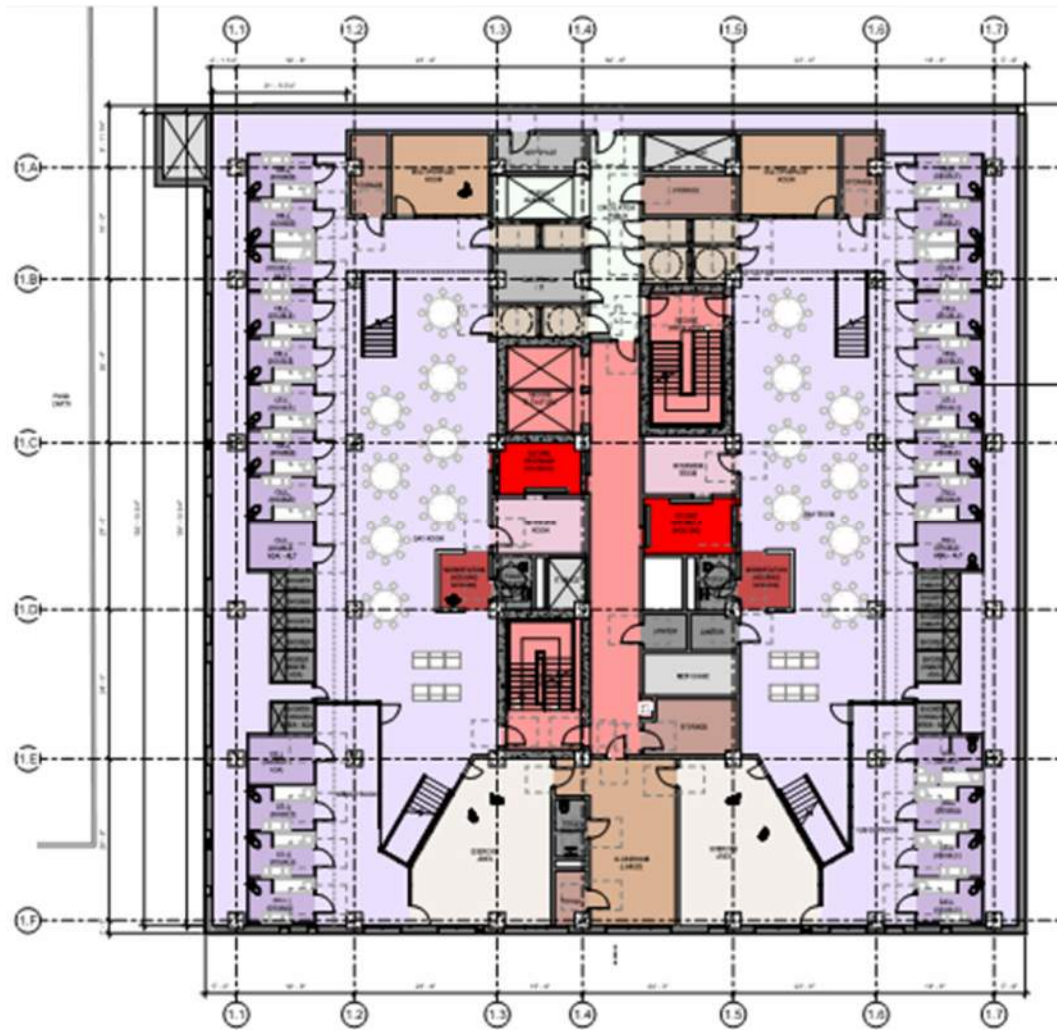
**6, 7, 8**



**6M, 7M, 8M**

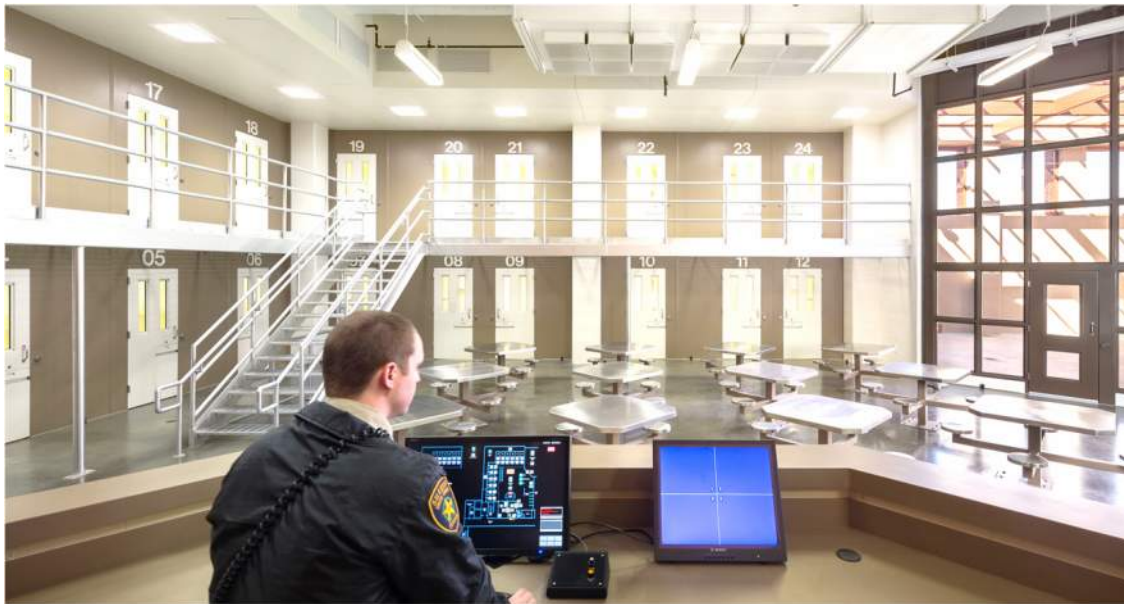


## Project Update – Schematic Design Progress



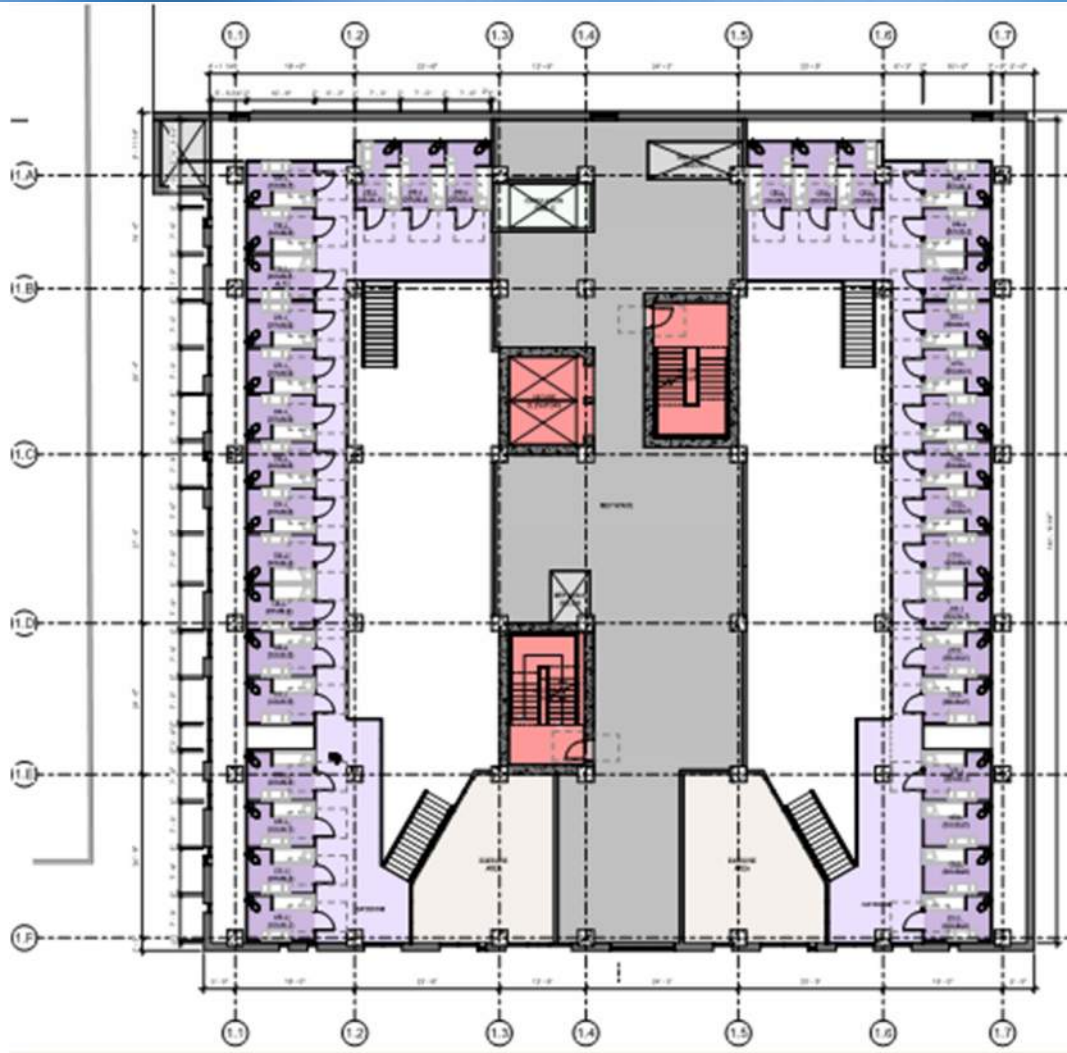
**6, 7, 8**

## Project Update – General Population Housing (6th, 7th and 8th Floors)





## Project Update – Schematic Design Progress



**6M, 7M, 8M**



# Interior Design Concepts

## Project Update – Schematic Design Progress



# Project Update – Schematic Design Progress

## BIOPHILIC DESIGN



“IT IS INHERENT IN HUMANS TO HAVE A CONNECTION & NEED FOR THE NATURAL WORLD”

- BIOPHILIC DESIGN SEEKS TO PROVIDE THAT CONNECTION TO NATURE THAT HUMANS CRAVE IN THE BUILT ENVIRONMENT.
- HOW TO IMPLEMENT:
- VIEW OF NATURAL ELEMENTS FROM WITHIN THE INTERIOR ENVIRONMENT
- NATURE-INSPIRED TEXTURES, SHAPES, AND PATTERNS
- VARYING LIGHT INTENSITIES OVER TIME THAT SIMULATE THE NATURAL CYCLE OF DAY AND NIGHT
- INTERACTION WITH NATURE THROUGH OTHER SENSES: SOUND, TOUCH & SMELL

# Project Update – Schematic Design Progress

## CREATING A HEALTHY ENVIRONMENT

*“THESE ARE PEOPLE WHO STUMBLED IN LIFE AND WE SEND THEM OFF IN THE BEST SHAPE THEY CAN.”*



FOCUS ON AN ENHANCED ENVIRONMENT TO SUPPORT COMMUNITY AND REDUCE STRESS WHILE IMPROVING WELLNESS FOR INMATES AND STAFF

HOW TO IMPLEMENT:

ENVIRONMENTS THAT MIMIC NATURE HAVE BEEN PROVEN TO INCREASE OVERALL HEALTH AND WELL-BEING AS WELL AS REDUCE STRESS LEVELS

CREATE A CALMING ENVIRONMENT WITH CLEAN VISUAL FIELDS AND SOOTHING COLORS

APPROPRIATE USE OF MATERIALS AND DETAILS THAT ARE DURABLE, SAFE AND CLEANABLE



# Project Update – Schematic Design Progress

## COLOR THEORY

COLOR	PROMOTES
VIOLET	INSPIRATION, EMPATHY, SELF RESPECT, TRANQUILITY
BLUE	CALMNESS, RELAXATION, HONESTY, TRUTH, CREATIVITY
AQUA	HEALING, SHARING, FRIENDSHIP, RESILIENCE, HARMONY
GREEN	BALANCE, HARMONY, SELF-ACCEPTANCE, RENEWAL
YELLOW	UPLIFTING, MENTAL STIMULATION, SELF-CONFIDENCE, CONTENTMENT
ORANGE	SELF-ESTEEM, OPTIMISM, HAPPINESS, INNER STRENGTH
RED	ENERGY, STRENGTH, MOTIVATION, CONFIDENCE, COURAGE

## Project Update – Schematic Design Progress



## Project Update – Schematic Design Progress



## Project Update – Schematic Design Progress



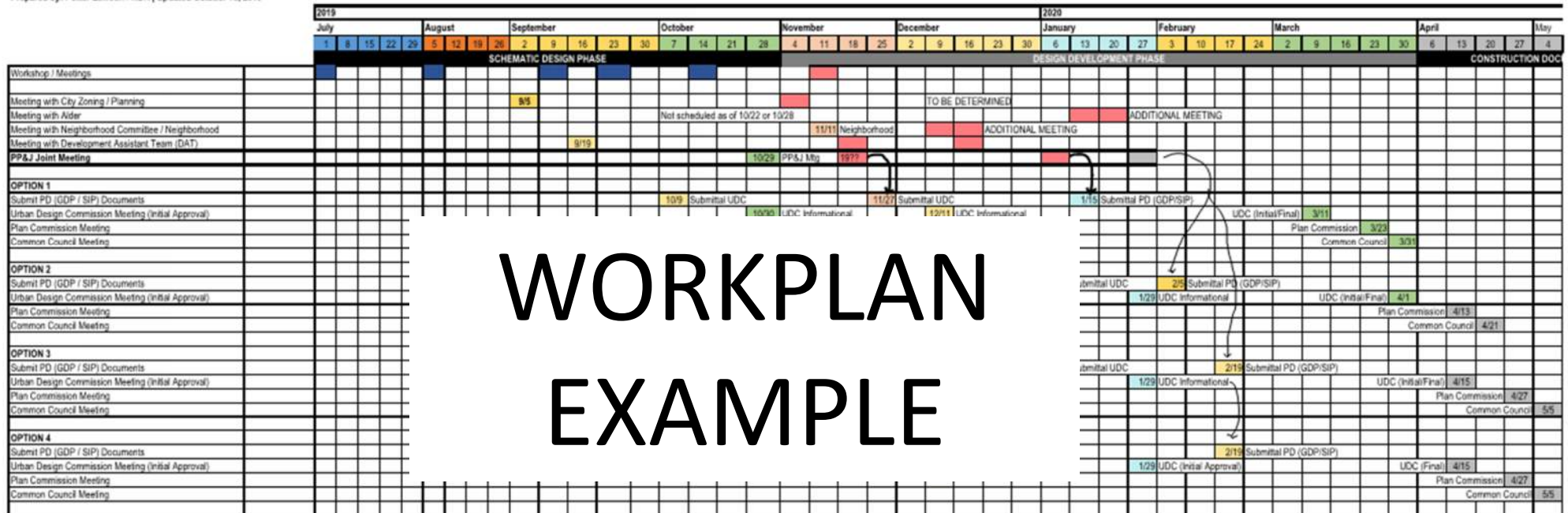


# City Approval & Community Engagement

# City of Madison Review & Approval & Community Engagement Process

Dane County Jail Consolidation - South Tower Addition City Approvals Schedule

Prepared by: Potter Lawson / HDR | Updated October 16, 2019



## City of Madison Review & Approval Process

- Meetings held with Fire Department, City Zoning, Planning and Development Assistance Team
- First UDC Submittal was sent in October
- First UDC Informational Meeting is in October
- Second UDC Submittal (Exterior Design) target is end of November
- Next UDC Informational Meeting target is early December
- UDC GDP/SIP Submittal target is January 2020
- UDC GDP/SIP Meeting target is March 2020
- City Plan Commission target is March 2020
- Commons Council Final Approval target is March 2020

Note: If additional UDC informational Meetings are needed, City approval will push out to April or May of 2020.

## Community & Neighborhood Engagement Process

- Meeting held with City Alder Mike Verveer
- CNI Bassett District Meeting is in November
- Public Notice (Postcards sent by City) Meeting target date is in December

Note: Additional neighborhood meetings will be held as established with CNI Bassett District Committee.



# Next Steps

## Next Steps 2019 & 2020

November	Issue & Review Schematic Design Phase Documents Complete Cost Estimates Update Staffing Plan Confirm Project is on Budget
11/19/19	Schedule Next PP&J PRC Joint Meeting (Exterior Focus)
Dec to May	Complete Design Development Additional PP&J PRC Joint Meetings (Dates TBD)
June to Dec	Complete Construction Documents for Bidding

## Additional Next Steps 2020

Jan to Mar	Prepare RFP for DEC (Prefab Cells) & SEC Design Assist
Dec to Mar	Prepare Early Package CDs for Relocation of Courthouse site electrical vault / service
April to Dec	Bid, Award and Construct Courthouse Site Electrical Service (Get ramp vault out of the way.)

## Next Steps 2021-2024

Q1/Q2 - 2021

Bid & Award

Q2/Q3 - 2021 to Q2/Q3 - 2023

South Tower Construction

Q3 - 2023

Move Out of PSB Jail Areas &  
Open Jail Tower

2023? - 2024

PSB Renovation Construction



**Questions?**

## Benefits of Prefabricated Modular Construction



- Improves quality of finished cells – better long-lasting finishes that are safer, more secure and more humane.
- Improves cost and schedule control.
- Improves safety – built offsite within a factory-controlled environment.
- Improves access to skilled labor.
- Improves design coordination with engineering systems.
- Improves overall constructability of project.
- Improves overall project risk mitigation: Tight downtown site with minimal staging and laydown areas and reduces impact to existing PSB DCSO operations, roads and City.

Note: Bringing this vendor on as early in design along with the DEC will get us the best outcomes for this project.

**Thank you.**