

The Prairie Enthusiasts

Protecting Land in Dane
County





Reid Bartholomew
Mission Advancement
Coordinator

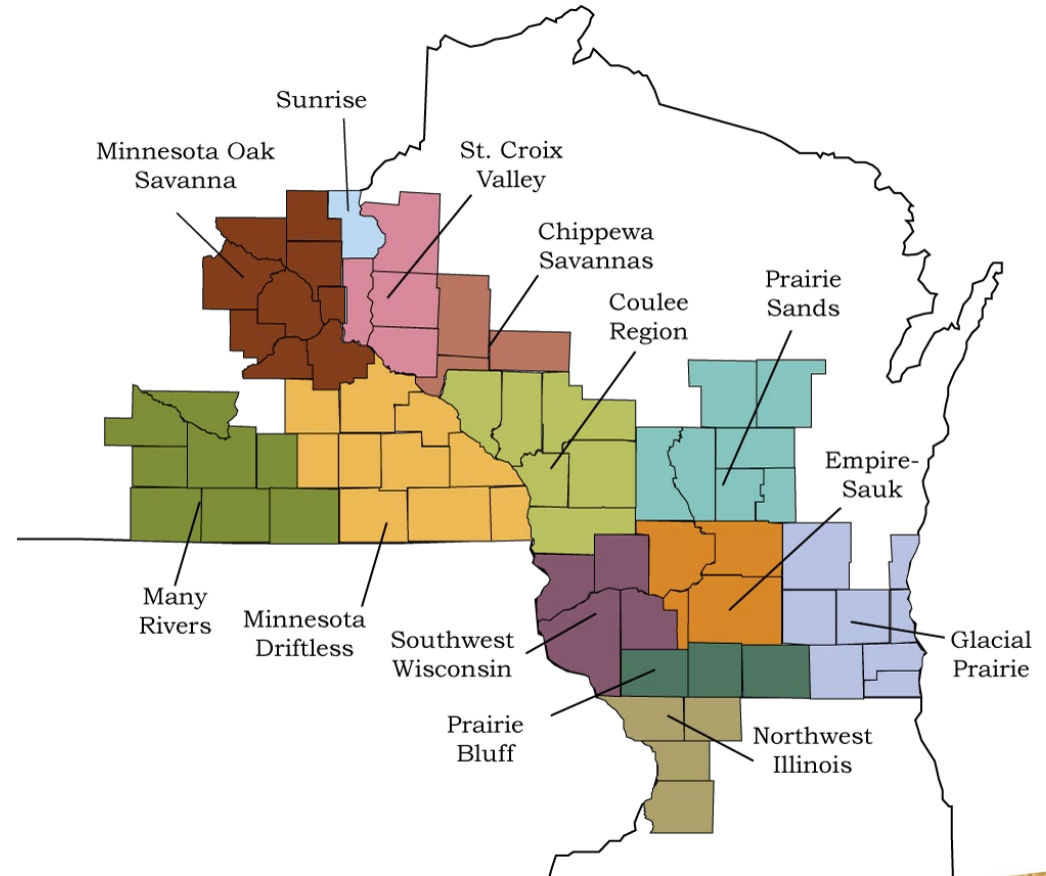


Rich Henderson
Empire Sauk Chapter
Representative
Land Management
Committee Chair
Land Protection Committee



Introducing The Prairie Enthusiasts

- 13 Chapters across the Upper Midwest
- Grassroots organization
- Mission focused on remnant, fire-dependent ecosystems



Dane County Conservation Fund At a Glance

- First request in 2007
- Nearly 400 acres of high-quality habitat or buffer area
- \$1.25 million dollars in support over 19 years



Erbe Grassland



Photo by Ron Lutz II

Erbe Grassland

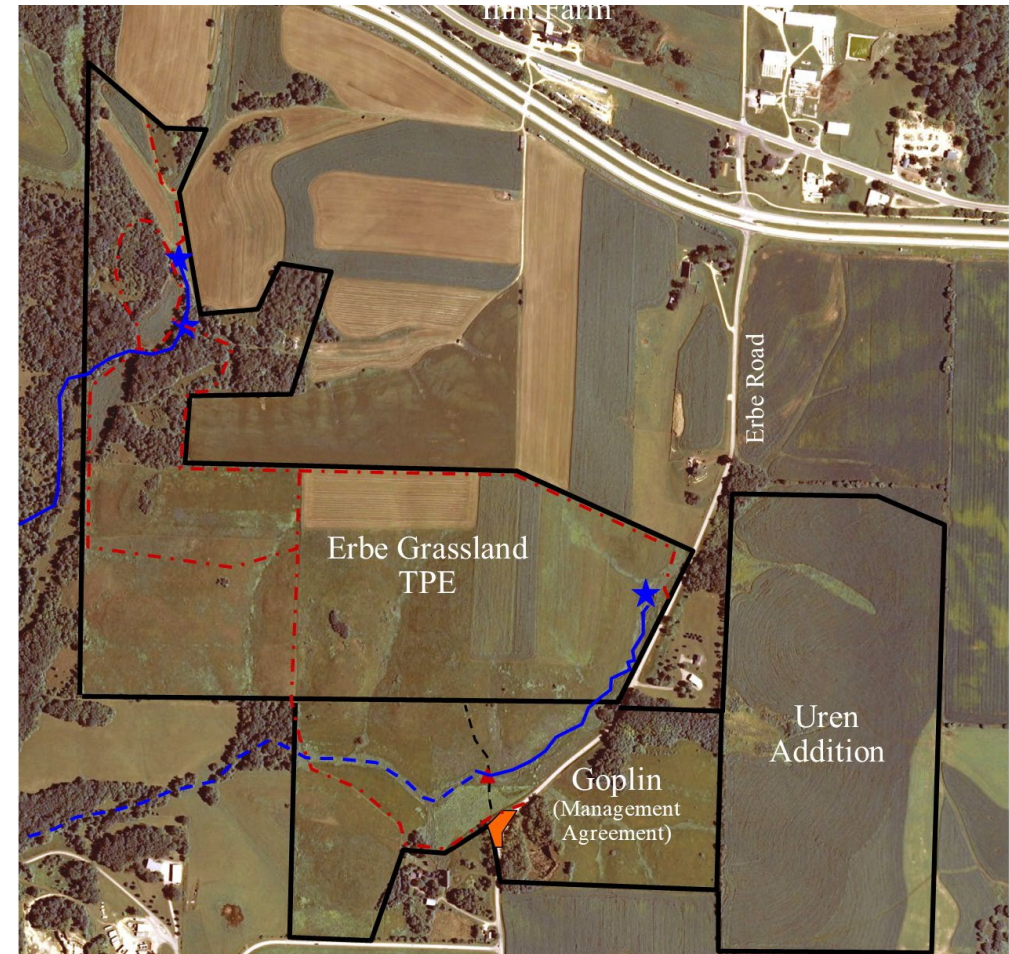
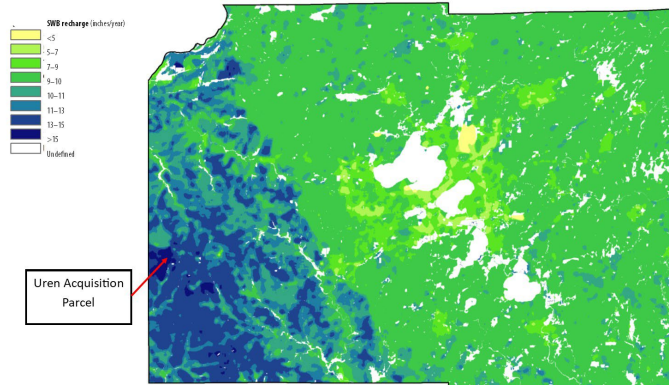
- Established 2007
- Expanded to a 217-acre preserve with purchases over the years
- Future expansion potential
- Among Highest Groundwater Recharge Rate in County
- Incredible Grassland Bird Habitat: 8 SGCN

6 Groundwater Recharge in Dane County, Wisconsin

Regional recharge

The recharge map (shown categorized at a reduced scale in figure 5) was prepared as a raster data set in Environmental Systems Research Institute grid format, suitable for overlay and analysis with other GIS data layers. The map was prepared using existing land use as of 2005 and a typical climate year, 1981. For this model year, recharge varies by more than 10 inches (25 cm) per year across the county. Using other years with different precipitation patterns and antecedent moisture conditions will result in different recharge estimates. In general, the pattern of recharge will remain constant, but the overall average will vary with the precipitation and antecedent soil moisture.

Some general trends, correlating with surficial geology and land-use patterns, are evident in the recharge map. The greatest spatial control on recharge in Dane County is surficial geology. The unglaciated western and southwestern part of the county (Clayton and Atbig, 1997) has the highest recharge, shown in dark green and blue. Recharge is high here because thin soils with low storage capacity occur over carbonate and sandstone bedrock.



Smith-Reiner Drumlin



Photo by Moua Yang

Smith-Reiner Drumlin Prairie

- 40-acre preserve with remnant prairie
- Eastern Dane County
- Over 100 native prairie plant species



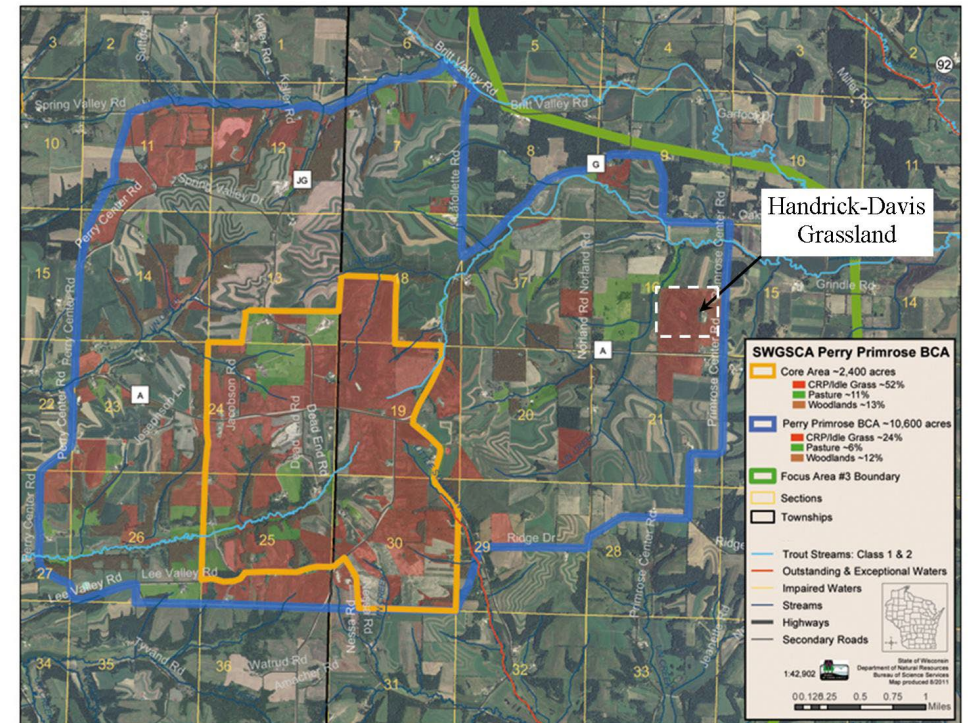
Handrick Grassland



Photo by Eric Preston

Handrick Grassland

- 96 acres in Primrose Township
- Expansion of which is a 2026 priority
- Showcase for local partnership
- DNR Bird Conservation Area
 - 8 SGCN



Thank You!



Photo by Ginny Gaynor

