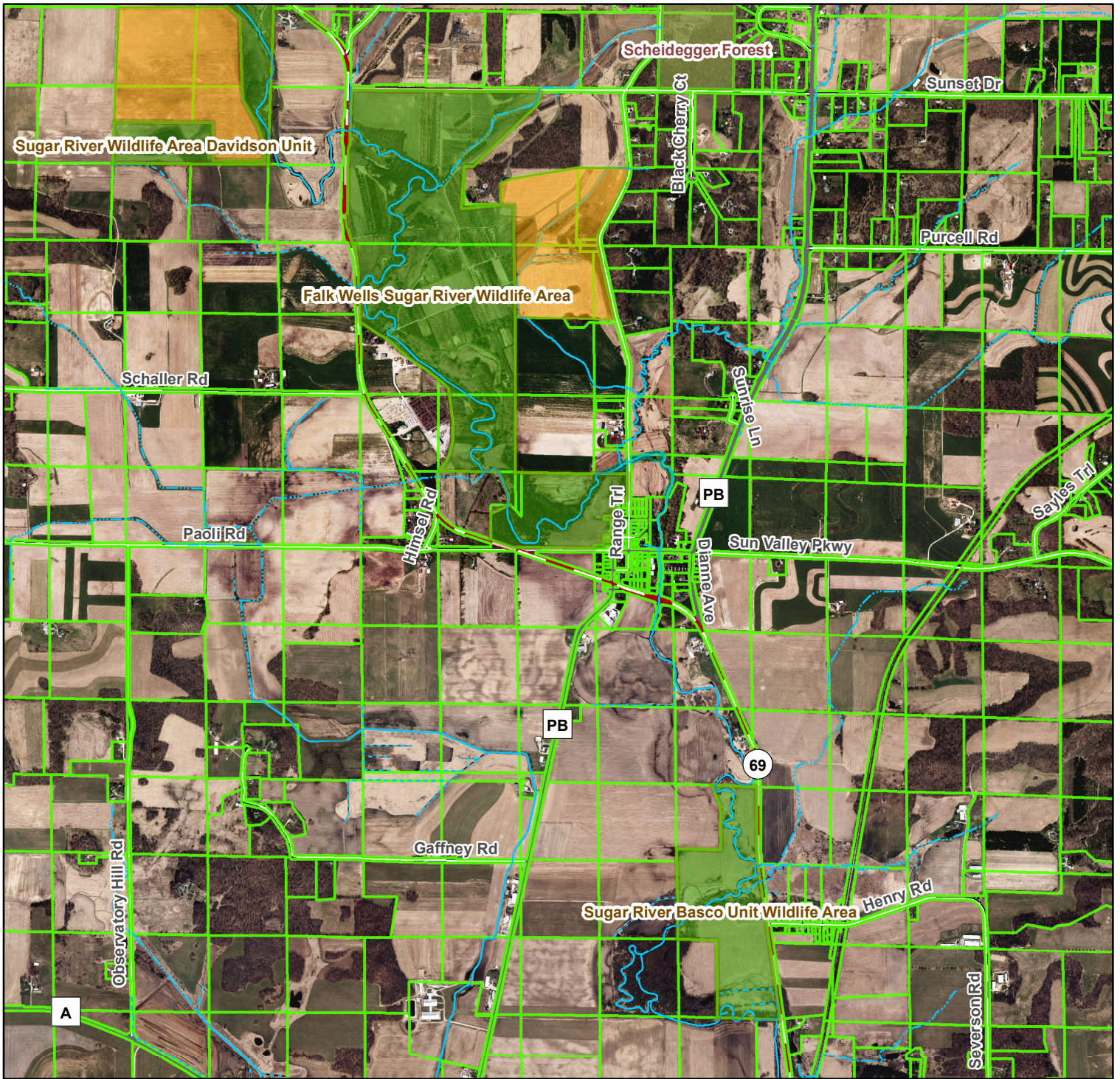
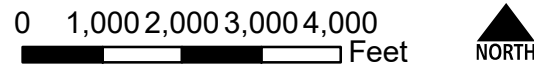


WI DOT Highway 69 project - Fee and Temporary Limited Easements
 Falk Wells Sugar River Wildlife Area and Sugar River Basco Unit Wildlife Area



- County owned Wildlife Area
- Conservation Easement



Tax Parcels (3-2018)
 Digital orthophoto from April 2017.

Prepared by Dane County Land & Water Resources Department, February 26, 2020.

Document Path: H:\LandAcquisition\AcquisitionProjects\Verona\DOT_Hwy69_sale\DOT_Hwy68_Overview.mxd

