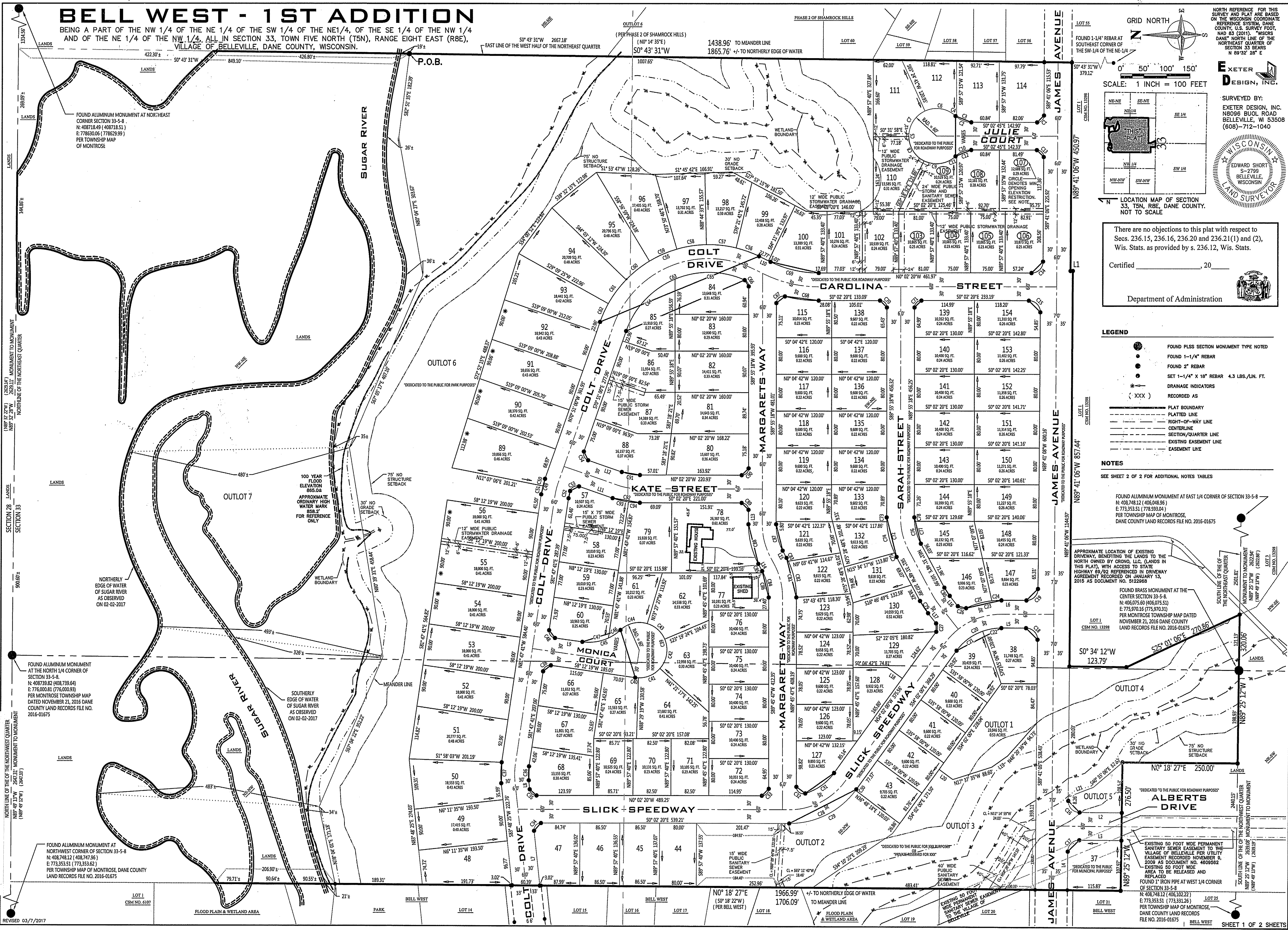


BELL WEST - 1ST ADDITION

BEING A PART OF THE NW 1/4 OF THE NE 1/4 OF THE SW 1/4 OF THE NE 1/4, OF THE SE 1/4 OF THE NW 1/4 AND OF THE NE 1/4 OF THE NW 1/4, ALL IN SECTION 33, TOWN FIVE NORTH (T5N), RANGE EIGHT EAST (R8E), VILLAGE OF BELLEVILLE, DANE COUNTY, WISCONSIN.



GRID NORTH
NORTH REFERENCE FOR THIS SURVEY AND PLAT ARE BASED ON THE WISCONSIN COORDINATE REFERENCE SYSTEM, DANE COUNTY, U.S. SURVEY FOOT, NAD 83 (2011). "WISCONSIN DANE" NORTH LINE OF THE NORTHEAST QUARTER OF SECTION 33 BEING 189°52'28"E

EXETER DESIGN, INC.
SURVEYED BY:
EXETER DESIGN, INC.
6500 BUOL ROAD
BELLEVILLE, WI 53508
(608)-712-1040

SCALE: 1 INCH = 100 FEET

LOCATION MAP OF SECTION 33, T5N, R8E, DANE COUNTY, NOT TO SCALE

There are no objections to this plat with respect to Secs. 236.15, 236.16, 236.20 and 236.21(1) and (2), Wis. Stats. as provided by s. 236.12, Wis. Stats.

Certified _____, 20__

Department of Administration

LEGEND

- FOUND PLSS SECTION MONUMENT TYPE NOTED
- FOUND 1-1/4" REBAR
- FOUND 2" REBAR
- SET 1-1/4" X 18" REBAR 4.3 LBS./LIN. FT.
- DRAINAGE INDICATORS
- RECORDED AS
- PLAT BOUNDARY
- PLATTED LINE
- RIGHT-OF-WAY LINE
- CENTERLINE
- SECTION/QUARTER EASEMENT LINE
- EXISTING EASEMENT LINE
- EASEMENT LINE

NOTES

SEE SHEET 2 OF 2 FOR ADDITIONAL NOTES/TABLES

FOUND ALUMINUM MONUMENT AT EAST 1/4 CORNER OF SECTION 33-5-8
N: 408,748.12 (406,046.95)
E: 773,353.51 (778,593.04)
PER TOWNSHIP MAP OF MONROSE, DANE COUNTY LAND RECORDS FILE NO. 2016-01675

APPROXIMATE LOCATION OF EXISTING DRIVEWAY, BENEFITING THE LANDS TO THE NORTH OWNED BY GRONO, LLC, (LANDS IN THIS PLAT), WITH ACCESS TO STATE HIGHWAY 99 REFERENCED IN DRIVEWAY AGREEMENT RECORDED ON JANUARY 13, 2015 AS DOCUMENT NO. 5122988

FOUND BRASS MONUMENT AT THE CENTER SECTION 33-5-8
N: 408,075.60 (405,075.51)
E: 775,970.16 (775,970.33)
PER TOWNSHIP MAP DATED NOVEMBER 21, 2016 DANE COUNTY LAND RECORDS FILE NO. 2016-01675

FOUND ALUMINUM MONUMENT AT NORTHWEST CORNER OF SECTION 33-5-8
N: 408,748.12 (408,739.64)
E: 776,000.81 (776,000.93)
PER TOWNSHIP MAP OF MONROSE, DANE COUNTY LAND RECORDS FILE NO. 2016-01675

SOUTHERLY EDGE OF WATER OF SUGAR RIVER AS OBSERVED ON 02-02-2017

FOUND ALUMINUM MONUMENT AT NORTHWEST CORNER OF SECTION 33-5-8
N: 408,748.12 (408,747.96)
E: 773,353.51 (773,353.62)
PER TOWNSHIP MAP OF MONROSE, DANE COUNTY LAND RECORDS FILE NO. 2016-01675

FOUND 1" IRON PIPE AT WEST 1/4 CORNER OF SECTION 33-5-8
N: 408,748.12 (406,102.22)
E: 773,353.51 (773,331.26)
PER TOWNSHIP MAP OF MONROSE, DANE COUNTY LAND RECORDS FILE NO. 2016-01675

Received: 03/13/2017
CPA
27636
0028

BELL WEST - 1ST ADDITION

BEING A PART OF THE NW 1/4 OF THE NE 1/4 OF THE SW 1/4 OF THE NE 1/4, OF THE SE 1/4 OF THE NW 1/4 AND OF THE NE 1/4 OF THE NW 1/4, ALL IN SECTION 33, TOWN FIVE NORTH (T5N), RANGE EIGHT EAST (R8E), VILLAGE OF BELLEVILLE, DANE COUNTY, WISCONSIN.

NOTES

- ALL DIMENSIONS MEASURED AND SHOWN ARE TO THE NEAREST ONE HUNDREDTH OF A FOOT; ALL ANGLES MEASURED TO THE NEAREST THREE SECONDS AND COMPUTED TO THE NEAREST ONE SECOND.
- ALL INTERIOR LOT AND OUTLOT CORNERS NOT SHOWN, ARE MONUMENTED WITH 3/4" REBAR = 1.5 LBS./LIN. FT.
- DRAINAGE ARROWS INDICATE THE DIRECTION OF STORMWATER DRAINAGE AT INDIVIDUAL PROPERTY LINES NO SUBSTANTIAL GRADING ACTIVITIES MAY BE UNDERTAKEN WITHIN DRAINAGEWAYS, EXCEPT IN ACCORDANCE WITH CHAPTER 289 OF THE CODE OF THE VILLAGE OF BELLEVILLE. FOR LOTS THAT HAVE NO SLOPE ALONG THE LOT LINE AND ADJUT A STORMWATER MANAGEMENT AREA, AN HAS BEEN SHOWN.
- ALL UTILITY LINES FOR ELECTRIC POWER AND TELEPHONE SERVICE SHALL BE PLACED UNDERGROUND WITHIN EASEMENTS ALONG REAR LOT LINES.
- UTILITY EASEMENTS - NO POLES OR BURIED CABLES ARE TO BE PLACED SUCH THAT THE INSTALLATION WOULD DISTURB ANY SURVEY STAKE OR OBSTRUCT VISION ALONG ANY LOT LINE OR STREET LINE. THE DISTURBANCE OF A SURVEY STAKE BY ANYONE IS A VIOLATION OF S. 236.32, WISCONSIN STATUTES. UTILITY EASEMENTS AS HEREIN SET FORTH ARE FOR THE USE OF PUBLIC BODIES AND PRIVATE PUBLIC UTILITIES THAT HAVE THE RIGHT TO SERVE THE AREA. THE FINAL GRADE ABOVE UTILITY EASEMENTS SHOWN HEREON ESTABLISHED BY THE SUBDIVIDER SHALL NOT BE ALTERED BY MORE THAN (6) INCHES BY THE SUBDIVIDER, THEIR AGENT OR SUBSEQUENT OWNERS OF THE LOTS WITHOUT WRITTEN CONSENT OF THE UTILITIES INVOLVED.
- ALL RIGHT-OF-WAYS DEPICTED WITHIN THE PLAT BOUNDARY ARE DEDICATED TO THE PUBLIC.
- LOTS CONTAINING A CIRCLED LOT NUMBER (103-109), DENOTE A RESTRICTION FOR MINIMUM LOWEST OPENING ELEVATION FOR FLOOD PROTECTION BASED ON THE NORTH AMERICAN VERTICAL DATUM OF 1988 (120) ADJUSTMENT (NAVD88)(120). NO BUILDING OPENING TO BE CONSTRUCTED BELOW MINIMUM. SEE TABLE FOR LOTS AFFECTED AND ASSOCIATED MINIMUM ELEVATIONS

LINE #	LENGTH	BEARING
L1	5.00'	S0° 01' 48"W
L2	91.61'	S0° 18' 32"W
L3	91.34'	N0° 18' 32"E
L4	82.97'	N89° 41' 06"W
L5	53.61'	S0° 02' 20"E
L6	54.29'	N0° 02' 20"W
L7	119.58'	N83° 48' 25"E
L8	19.50'	N83° 48' 25"E
L9	60.13'	N8° 12' 19"E
L10	27.80'	S25° 48' 30"W
L11	77.31'	S19° 09' 00"W
L12	77.48'	N19° 09' 00"E
L13	31.38'	S89° 55' 18"W
L14	17.64'	S61° 31' 48"W
L15	17.64'	N61° 31' 48"E
L16	28.31'	N51° 26' 08"E
L17	28.17'	S51° 26' 08"W
L18	40.00'	S35° 58' 00"W
L19	41.94'	N35° 14' 31"W
L20	36.87'	N35° 58' 00"E
L21	58.66'	S20° 52' 58"E

LOT #	ELEVATION (NAVD 88)(120)
103	898.75'
104	899.50'
105	901.00'
106	903.50'
107	903.00'
108	900.50'
109	898.75'

CURVE TABLE										CURVE TABLE									
CURVE #	CURVE LENGTH	RADIUS	DELTA	CHORD BEARING	CHORD LENGTH	TANGENT IN	TANGENT OUT	CURVE #	CURVE LENGTH	RADIUS	DELTA	CHORD BEARING	CHORD LENGTH	TANGENT IN	TANGENT OUT				
C1	23.47'	15.00'	89° 38' 21"	N44° 51' 56"W	21.15'	N89° 41' 06"W	N0° 02' 45"W	C48	23.56'	15.00'	90° 00' 00"	N53° 12' 19"E	21.21'	N8° 12' 19"E	S81° 47' 41"E				
C2	37.82'	50.00'	43° 20' 30"	N21° 37' 30"E	36.93'	N0° 02' 45"W	N43° 17' 45"E	C49	34.38'	180.00'	10° 56' 42"	N76° 19' 21"W	34.33'	N70° 51' 00"W	N81° 47' 41"W				
C3	34.54'	50.00'	39° 34' 36"	N19° 44' 38"E	33.85'	N0° 02' 45"W	N39° 31' 51"E	C50	15.85'	180.00'	5° 02' 48"	N73° 22' 24"W	15.85'	N70° 51' 00"W	N75° 53' 48"W				
C4	3.28'	50.00'	3° 45' 54"	N41° 24' 48"E	3.29'	N39° 31' 51"E	N43° 17' 45"E	C51	18.53'	180.00'	5° 53' 54"	N78° 50' 45"W	18.52'	N75° 53' 48"W	N81° 47' 41"W				
C5	279.27'	60.00'	266° 41' 01"	S89° 57' 15"W	87.27'	N43° 17' 45"E	S43° 23' 15"E	C52	16.02'	120.00'	7° 39' 02"	S77° 58' 10"E	16.01'	S81° 47' 41"E	S74° 08' 39"E				
C6	71.09'	60.00'	67° 53' 04"	N9° 21' 13"E	67.00'	N43° 17' 45"E	N24° 35' 19"W	C53	24.42'	15.00'	93° 17' 39"	S27° 29' 49"E	21.81'	S74° 08' 39"E	S19° 09' 00"W				
C7	69.05'	60.00'	65° 56' 39"	N57° 33' 39"W	65.31'	N24° 35' 19"W	S89° 28' 02"W	C54	23.56'	15.00'	90° 00' 00"	N64° 09' 00"E	21.21'	N19° 09' 00"E	S70° 51' 00"E				
C8	65.74'	60.00'	62° 46' 34"	S58° 04' 45"W	62.50'	S89° 28' 02"W	S26° 41' 28"W	C55	421.76'	250.00'	96° 39' 30"	N22° 31' 15"W	373.49'	N25° 48' 30"E	N70° 51' 00"W				
C9	73.39'	60.00'	70° 04' 43"	S8° 20' 54"E	68.90'	S26° 41' 28"W	S43° 23' 15"E	C56	53.10'	250.00'	12° 10' 11"	N19° 43' 25"E	53.00'	N25° 48' 30"E	N13° 38' 19"E				
C10	37.82'	50.00'	43° 20' 30"	N21° 43' 00"W	36.93'	S43° 23' 15"E	S0° 02' 45"E	C57	65.00'	250.00'	14° 53' 47"	N6° 11' 26"E	64.81'	N13° 38' 19"E	N1° 15' 27"W				
C11	3.28'	50.00'	3° 45' 54"	S41° 30' 18"E	3.29'	S43° 23' 15"E	S39° 37' 21"E	C58	65.00'	250.00'	14° 53' 47"	N8° 42' 21"W	64.81'	N1° 15' 27"W	N16° 09' 14"W				
C12	34.54'	50.00'	39° 34' 36"	S19° 50' 03"E	33.85'	S0° 02' 45"E	S0° 02' 45"E	C59	65.00'	250.00'	14° 53' 47"	N23° 36' 08"W	64.81'	N16° 09' 14"W	N31° 03' 01"W				
C13	23.66'	15.00'	90° 21' 39"	S45° 08' 04"W	21.28'	S0° 02' 45"E	N89° 41' 06"W	C60	65.00'	250.00'	14° 53' 47"	N38° 29' 55"W	64.81'	N31° 03' 01"W	N45° 56' 48"W				
C14	39.12'	25.00'	89° 38' 47"	N44° 51' 43"W	35.25'	N89° 41' 06"W	N0° 02' 20"W	C61	65.00'	250.00'	14° 53' 47"	N53° 23' 42"W	64.81'	N45° 56' 48"W	N60° 50' 35"W				
C15	39.42'	25.00'	90° 21' 13"	S45° 08' 17"W	35.46'	S0° 02' 20"E	N89° 41' 06"W	C62	43.66'	250.00'	10° 00' 24"	N65° 50' 48"W	43.61'	N60° 50' 35"W	N70° 51' 00"W				
C16	39.27'	25.00'	90° 00' 22"	S45° 18' 33"W	35.36'	N89° 41' 06"W	S0° 18' 22"W	C63	315.03'	190.00'	95° 00' 05"	S23° 20' 57"E	280.17'	S70° 51' 00"E	S24° 09' 05"W				
C17	39.27'	25.00'	89° 59' 38"	N44° 41' 17"W	35.35'	N0° 18' 32"E	N89° 41' 06"W	C64	159.56'	190.00'	48° 07' 04"	S46° 47' 28"E	154.92'	S70° 51' 00"E	S22° 43' 56"E				
C18	39.42'	25.00'	90° 21' 13"	S45° 08' 17"W	35.46'	S0° 02' 20"E	N89° 41' 06"W	C65	155.47'	190.00'	46° 53' 00"	S0° 42' 35"W	151.17'	S22° 43' 56"E	S24° 09' 05"W				
C19	39.12'	25.00'	89° 38' 47"	N44° 51' 43"W	35.25'	N89° 41' 06"W	N0° 02' 20"W	C66	17.22'	15.00'	65° 46' 14"	S57° 02' 12"W	16.29'	S24° 09' 05"W	S89° 55' 18"W				
C20	113.09'	120.00'	53° 59' 40"	S27° 02' 10"E	108.95'	S54° 02' 00"E	S0° 02' 20"E	C67	27.27'	15.00'	104° 10' 19"	S37° 59' 32"E	23.67'	N89° 55' 18"E	S14° 05' 37"W				
C21	71.81'	120.00'	34° 17' 06"	S36° 53' 27"E	70.74'	S54° 02' 00"E	S19° 44' 54"E	C68	74.00'	300.00'	14° 07' 57"	N7° 01' 39"E	73.81'	S14° 05' 37"W	S0° 02' 20"E				
C22	41.28'	120.00'	19° 42' 34"	S9° 53' 37"E	41.08'	S19° 44' 54"E	S0° 02' 20"E	C69	108.27'	240.00'	25° 50' 50"	N12° 53' 05"E	107.35'	N0° 02' 20"W	N25° 48' 30"E				
C23	79.11'	180.00'	25° 11' 00"	N12° 37' 50"W	78.48'	N0° 02' 20"W	N25° 13' 19"W	C70	23.55'	15.00'	89° 57' 38"	S44° 56' 29"W	21.21'	S0° 02' 20"W	S89° 55' 18"W				
C24	20.85'	180.00'	6° 38' 15"	N3° 21' 27"W	20.84'	N0° 02' 20"W	N6° 40' 35"W	C71	23.57'	15.00'	90° 02' 22"	S45° 09' 31"E	21.22'	N89° 55' 18"E	S0° 02' 20"E				
C25	58.26'	180.00'	18° 32' 44"	N15° 56' 57"W	58.01'	N6° 40' 35"W	N25° 13' 19"W	C72	89.20'	180.00'	28° 23' 30"	S75° 43' 33"W	88.29'	S89° 55' 18"W	S61° 31' 48"W				
C26	20.07'	15.00'	76° 39' 27"	N13° 06' 24"E	18.61'	N25° 13' 19"W	N51° 26' 08"E	C73	9.22'	180.00'	2° 56' 00"	S88° 27' 18"W	9.21'	S89° 55' 18"W	S86° 59' 18"W				
C27	19.51'	15.00'	74° 31' 52"	S88° 42' 04"W	18.17'	S51° 26' 08"W	N54° 02' 00"W	C74	70.45'	180.00'	22° 25' 28"	S75° 46' 34"W	70.00'	S86° 59' 18"W	S66° 33' 50"W				
C28	169.63'	180.00'	53° 59' 40"	S27° 02' 10"E	163.42'	S0° 02' 20"E	S54° 02' 00"E	C75	9.53'	180.00'	3° 02' 02"	S63° 02' 49"W	9.53'	S64° 33' 50"W	S61° 31' 48"W				
C29	167.00'	180.00'	53° 09' 22"	S26° 37' 01"E	161.07'	S0° 02' 20"E	S53° 11' 42"E	C76	59.46'	120.00'	28° 23' 30"	N75° 43' 33"E	58.86'	N61° 31' 48"E	N89° 55' 18"E				
C30	2.63'	180.00'	0° 50' 18"	S53° 36' 51"E	2.63'	S53° 11' 42"E	S54° 02' 00"E	C77	50.72'	120.00'	24° 13' 02"	N73° 38' 19"E	50.34'	N61° 31' 48"E	N85° 44' 50"E				
C31	77.94'	120.00'	37° 12' 49"	N35° 25' 35"W	76.58'	N54° 02' 00"W	N16° 49' 10"W	C78	8.74'	120.00'	4° 10' 28"	N87° 50' 04"E	8.74'	N85° 44' 50"E	N89° 55' 18"E				
C32	27.90'	15.00'	106° 34' 57"	N36° 28' 18"E	24.05'	N16° 49' 10"W	N89° 45' 47"E	C79	31.71'	180.00'	10° 05' 40"	S56° 28' 58"W	31.67'	S61° 31' 48"W	S51° 26' 08"W				
C33	23.61'	15.00'	90° 11' 53"	N45° 08' 17"W	21.25'	N0° 02' 20"W	S89° 45' 47"W	C80	21.14'	120.00'	10° 05' 40"	N56° 28' 58"E	21.11'	N51° 26' 08"E	N61° 31' 48"E				
C34	25.17'	15.00'	96° 09' 16"	S48° 06' 58"E	22.32'	N83° 48' 25"E	S0° 02' 20"W	C81	88.70'	180.00'	28° 13' 59"	N75° 38' 47"E	87.80'	N89° 45' 47"E	N61° 31' 48"E				
C35	21.95'	15.00'	83° 50' 44"	N41° 53' 02"E	20.04'	N0° 02' 20"W	N83° 48' 25"E	C82	80.48'	180.00'	25° 36' 58"	N76° 57' 17"E	79.81'	N89° 45' 47"E	N64° 08' 48"E				
C36	30.16'	120.00'	14° 23' 54"	S88° 59' 38"E	30.08'	N83° 48' 25"E	S81° 47' 41"E	C83	8.22'	180.00'	2° 37' 00"	N62° 50' 18"E	8.22'	N64° 08' 48"E	N61° 31' 48"E				
C37	45.23'	180.00'	14° 23' 54"	N88° 59' 38"W	45.11'	N81° 47' 41"W	S83° 48' 25"W	C84	59.13'	120.00'	28° 13' 59"	S75° 38' 47"W	58.53'	S61° 31' 48"W	S89° 45' 47"W				
C38	23.56'	15.00'	90° 00' 00"	S36° 47' 41"E	21.21'	S81° 47' 41"E	S8° 12' 19"W	C85	4.64'	120.00'	2° 12' 54"	S62° 38' 15"W	4.64'	S61° 31' 48"W	S63° 44' 42"W				
C39	242.23'	60.00'	231° 19' 04"	N72° 32' 47"E	108.17'	S8° 12' 19"W	N43° 06' 46"W	C86	54.49'	120.00'	26° 01' 05"	S76° 45' 14"W	54.02'	S63° 44' 42"W	S89° 45' 47"W				
C40	7.01'	60.00'	6° 41' 37"	S4° 51' 30"W	7.01'	S8° 12' 19"W	S1° 30' 41"W	C87	59.46'	120.00'	28° 23' 30"	N75° 43' 33"E	58.86'	N61° 31' 48"E	N89° 55' 18"E				
C41	52.52'	60.00'	50° 09' 24"	S23° 34' 01"E	50.86'	S1° 30' 41"W	S48° 38' 43"E	C88	89.20'	180.00'	28° 23' 30"	S75° 43' 33"W	88.29'	S89° 55' 18"W	S61° 31' 48"W				
C42	67.73'	60.00'	64° 40' 41"	S80° 59' 03"E	64.19'	S48° 38' 43"E	N66° 40' 36"E	C89	23.55'	15.00'	89° 57' 38"	S44° 56' 29"W	21.21'	S0° 02' 20"E	S89° 55' 18"W				
C43	52.50'	60.00'	50° 08' 03"	N41° 36' 35"E	50.84'	N66° 40' 36"E	N16° 32' 33"E	C90	23.57'	15.00'	90° 02' 22"	N45° 09' 31"W	21.22'	S89° 55' 18"W	N0° 02' 20"W				
C44	62.47'	60.00'	59° 39' 19"	N13° 17' 06"W	59.69'	N16° 32' 33"E	N43° 06' 46"W	C91	40.19'	120.00'	19° 11' 20"	N9° 33' 20"E	40.00'	N0° 02' 20"W	N19° 09' 00"E				
C45	89.57'	100.00'	51° 19' 04"	N17° 27' 13"W	86.60'	N43° 06' 46"W	N8° 12' 19"E	C92	60.28'	180.00'	19° 11' 20"	S9° 33' 20"W	60.00'	S19° 09' 00"W	S0° 02' 20"E				
C46	31.49'	100.00'	18° 02' 29"	N34° 05' 31"W	31.36'	N43° 06' 46"W	N25° 04' 16"W	C93	35.53'	180.00'	11° 18' 31"	S13° 29' 45"W	35.47'	S19° 09' 00"W	S7° 50' 29"W				
C47	58.08'	100.00'	33° 16' 35"	N8° 25' 59"W	57.27'	N25° 04' 16"W	N8° 12' 19"E	C94	24.75'	180.00'	7° 52' 49"	S3° 54' 05"W	24.74'	S7° 50' 29"W	S0° 02' 20"E				

CERTIFICATE OF VILLAGE CLERK

STATE OF WISCONSIN)
DANE COUNTY) ss.
RESOLVED THAT THIS PLAT KNOWN AS BELL WEST - 1ST ADDITION LOCATED IN THE VILLAGE OF BELLEVILLE, WHICH HAS BEEN FILED FOR THE APPROVAL OF THE VILLAGE OF BELLEVILLE, COUNTY OF DANE, WISCONSIN BE AND THE SAME, IS HEREBY APPROVED BY THE VILLAGE BOARD OF THE VILLAGE OF BELLEVILLE AS REQUIRED BY CHAPTER 236, WISCONSIN STATUTES.

BY RESOLUTION ADOPTED ON THIS _____ DAY OF _____, 20____
AND THAT SAID RESOLUTION FURTHER PROVIDED FOR THE ACCEPTANCE OF THOSE LANDS AND RIGHTS DEDICATED BY SAID BELL WEST - 1ST ADDITION FOR PUBLIC USE.

DATE _____ BRIAN WILSON, VILLAGE CLERK

OWNER'S CERTIFICATE OF DEDICATION

CRONO, LLC. AS OWNER, WE HEREBY CERTIFY THAT WE CAUSED THE LAND DESCRIBED ON THIS PLAT TO BE SURVEYED, DIVIDED, MAPPED AND DEDICATED AS REPRESENTED ON THE PLAT. WE ALSO CERTIFY THAT THIS PLAT IS REQUIRED BY S.236.10 OR S.236.12 TO BE SUBMITTED TO THE FOLLOWING FOR APPROVAL OR OBJECTION:

DE