



Dane County 4 - H

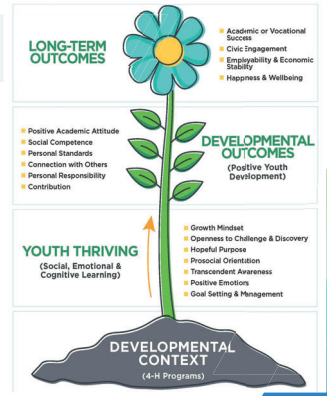
Lisa Curley
4-H Program Educator
curley.lisa@countyofdane.com



4- H Thriving Model

The survey measures:
Program Quality (the roots on the flower), **Youth Thriving** (shorter term impact on a youth's social, emotional, and cognitive learning) and longer term **Developmental Outcomes** on 4-H youth.

The survey will not only track impact, but ensure high quality programming continues to be delivered.



Program Quality - Dane County Thriving Survey Results Fall 2023

Sparks	Belonging	Caring
5.25 (2020 = 4.8)	6.0 (2020 = 5.5)	5.9 (2020 = 5.5)
Caring Adults 5.6 (2020 = 5.3)	Youth Adult Partnership 6.1 (2020 = 5.7)	Data was collected via an electronic survey to enrolled members ages 13 years and older using a Scale of 1-7



Feedback from our 4 - H youth

Tell us something interesting or important you learned in 4 - H.

- Growing up I had a lot of social anxiety and was never good at public speaking...I feel 4H has definitely made me a better leader and public speaker. Now public speaking is something I'm really passionate about and plan to apply those skills into my future career.
- I learned how to voice my feelings in a group environment.
- That being you is more important than trying to be someone else.
- The 4-H Project of poultry has allowed for me to pursue potential future college course work in genetics.
- We do many things throughout the year to help our community, and it's really interesting seeing what we can do even as kids to be helping our community.

Program Quality

- Successes & Opportunities
 - Youth/Adult Partnerships
 - Sparks



Youth/Adult Partnership

When youth and adults do 4-H work together and everyone grows from the experience, it is a *developmental relationship*.



Annual Leader Training

Youth - Adult Partnership

Creates a Sense of Belonging

Youth voices are heard, enhancing ownership and responsibility.

Builds Relationships

Youth are seen as capable partners, taking active leadership roles working alongside volunteers and staff.

Emphasizes Learning By Doing

Youth and adults gain hands-on experience learning from each other



Dane County 4 - H Animal Education Meetings

- Interactive, Creative Meetings
- Led by youth leaders & adults
- Planning, Communication



Dane County 4 - H Camp

- Youth-Adult Partnership
- Teamwork, Planning, Leadership
- Confidence, Caring, Independence



Dane County 4 - H Art Sparks Days

- Youth Leadership
- 100+ participants/3 events
- New skills, sharing talents



Dane County 4 - H Leaders Board

- Increased youth leadership
- Increased scholarship opportunities
- Adult volunteer training



Sparks

4-H Programs help youth learn about new topics, find their passion, and are a big part of who they are.



Dane County 4 - H Science Fright Night

- Collaboration - 8 Partners, 14 STEM Activities
- 90+ Youth and 60+ adults (20% new to 4 -H)



Dane County 4 - H Performers Festival

- Youth/Adult Planning Team
- Performing Arts
- Public Speaking, Confidence



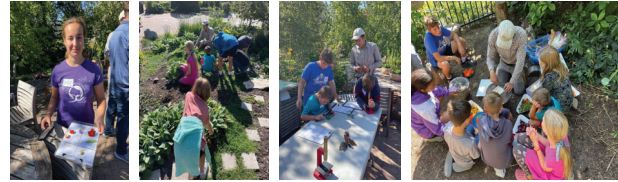
Dane County 4 - H UW Partnerships

- DC Smith Greenhouse
- Allen Centennial Garden
- UW Biotechnology
- UW Space Place



WI 4 - H Project Leader Training

- DC Smith Greenhouse
- Allen Centennial Garden
- UW Biotechnology
- UW Space Place



Sparks in 2024 - 2025

UW Connections

Build relationships with other UW-Madison departments and colleagues to create more programs that spark interest in possible post-HS opportunities.

4-H 101

Develop an orientation program for new families so first generation families feel welcome and informed when joining 4-H. Increase new family retention.

New Clubs

Update new club and promotional resources so volunteers and families involved feel confident starting a new 4-H Club. Goal is to start at least one new club annually.



Thank you!

Any questions?

Lisa Curley
Dane County 4-H Program Educator

- curley.lisa@countyofdane.com

