

Permanent Shelter Development Update



City County Homeless Issues Committee Update

June 5th, 2023

Contact Information & Resources

Project Leads:

- Jonathan Evans- Engineering, City of Madison;

Email: jevans@cityofmadison.com
- Linette Rhodes- Community Development Division, City of Madison
 - Email: lrhodes@cityofmadison.com
- Project Website: <https://www.cityofmadison.com/engineering/projects/bartillon-shelter>
- Sign-up for project email updates on the website

1904 Bartillon Drive

- The City of Madison and Dane County are collaborating to develop a new, purpose built shelter to primarily serve men experiencing homelessness.
- Between the City of Madison (\$10M), Dane County (\$9M) and the Federal Government (\$2M), total of \$21M of capital funds authorized for shelter.



Actions To Date

April 2022

- Madison Common Council approved 1904 Bartillon Dr as site for a permanent shelter facility

Aug 2022

- Team led by Dimension IV-Madison selected to provide architectural and engineering design services.

Oct 2022

- City RFQ process used to select Porchlight, Inc. to operate shelter.
- Multi-agency design team begins community engagement on design and services (Trauma- Informed Design Assessment)

Community Engagement

Connecting with the community



Who did we engage with?

- **People with Lived Experience**

- Past experience of homelessness, current guests of shelters, those who have chosen not to access shelter

- **Service Providers**

- Service providers and other stakeholders who provided their perspectives regarding service needs

- **Neighborhoods and Businesses** near Bartillon Drive

- Primarily area property and business owners

How were they engaged?

- **Public Survey:**
 - **Door to Door:** Area businesses contacted directly
 - **Email:** Sent to 500 member Homeless Services Consortium listserv, encouraged to share among their networks

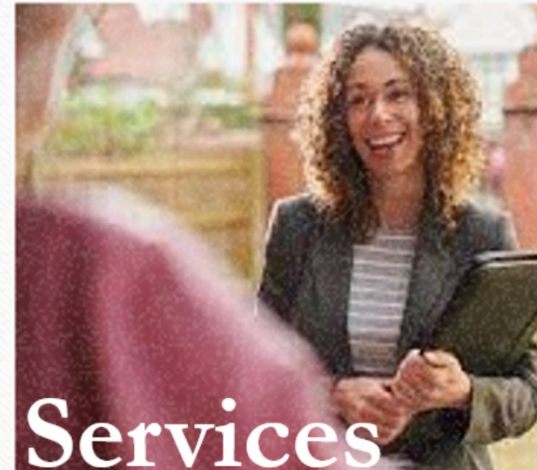
Received 190 responses 27 from people with lived experience, 113 from service providers, 50 from neighborhood

Trauma Informed Design Assessment

- Led by Shopworks Architecture
- Interviews, Focus Groups, Surveys
 - Staff and guests of Zeier Road, Dairy Drive, Beacon, Salvation Army shelter locations
 - Other service providers
 - Other individuals accessing homeless services
- A total of 145 people
 - 77 service providers
 - 68 people accessing services
- [Trauma Informed Design Report](#)

3 Major Themes

- ✓ Safety
- ✓ Services
- ✓ Design





Safety Issues of Shelter Users

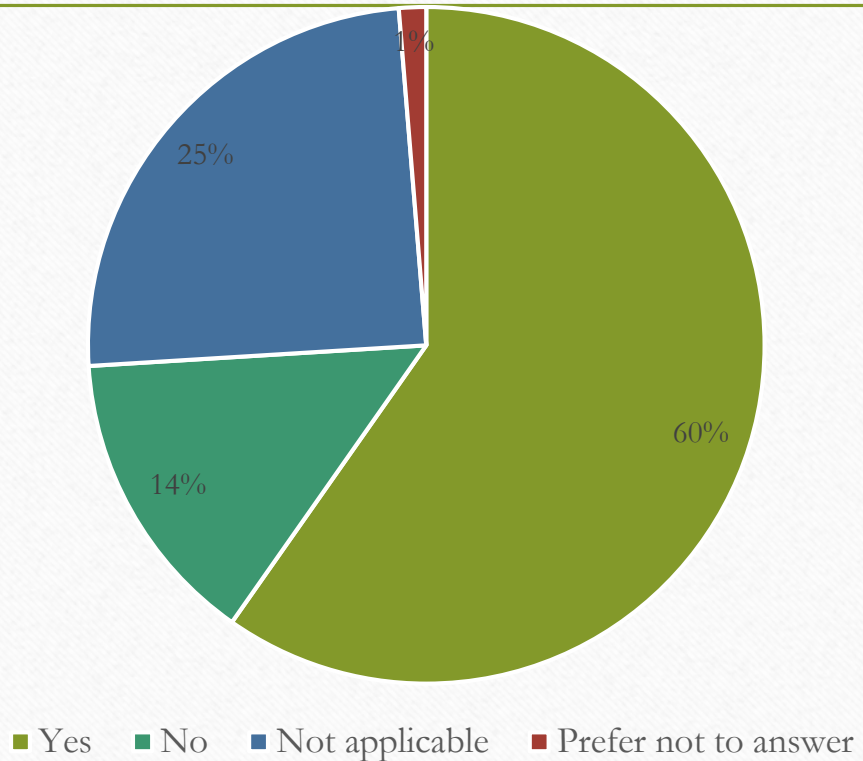
- Most common concerns
 - Potential problems from guests who have been **drinking or using drugs** or are dealing with **untreated mental health issues**
 - Threat of theft of personal **belongings**
- Requested safety features
 - Provide adequate **on-site security**
 - More **privacy in sleeping spaces**
 - **Secure storage** for personal items

Neighborhood Perspective - Safety Features

- What safety features for shelter guests and the community are most important?
- Top 3 responses
 - **Contact information** for shelter and outreach staff
 - Increased **lighting**
 - Surveillance **cameras**

Community Acceptance

- Are shelter guests concerned about being accepted by the community around the shelter?





Services

Services in High Demand

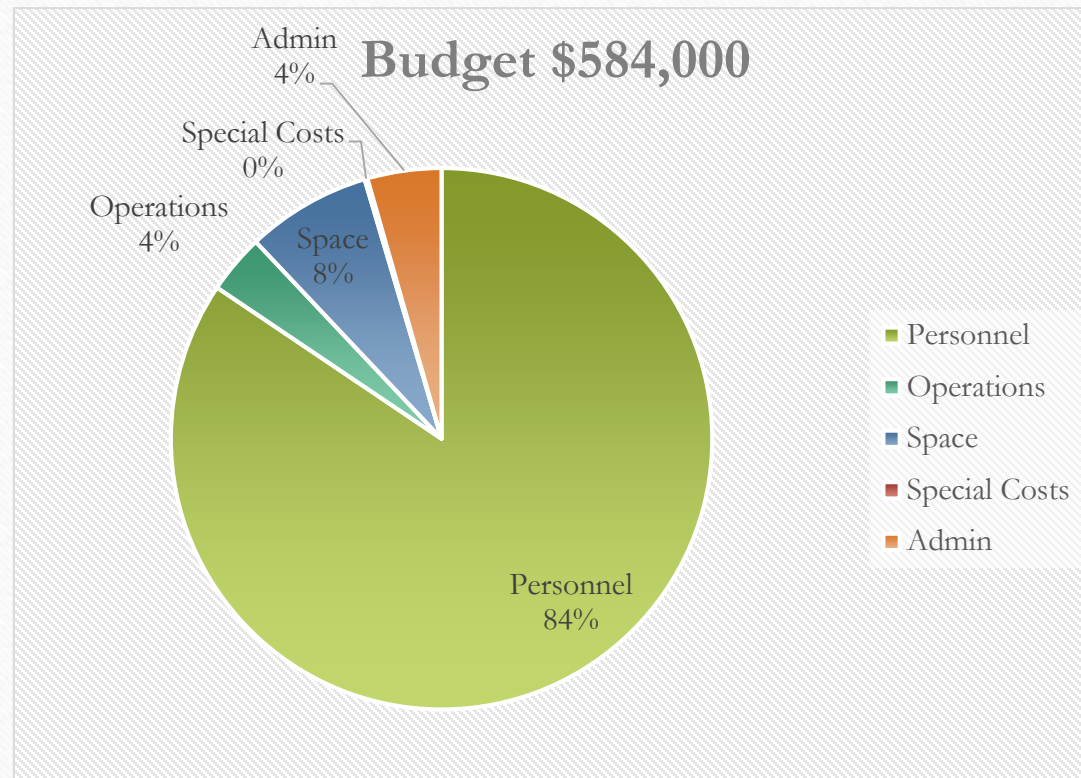
- From service providers: on-site services in greatest demand
 - **Housing**
 - **Behavioral Health**
 - **Case Management**
- From people with lived experience: on-site services deemed most helpful
 - **Transportation** services
 - Help finding **housing**
 - Someone to talk to about **mental health & basic health care** issues

Current Engagement Partners About Services

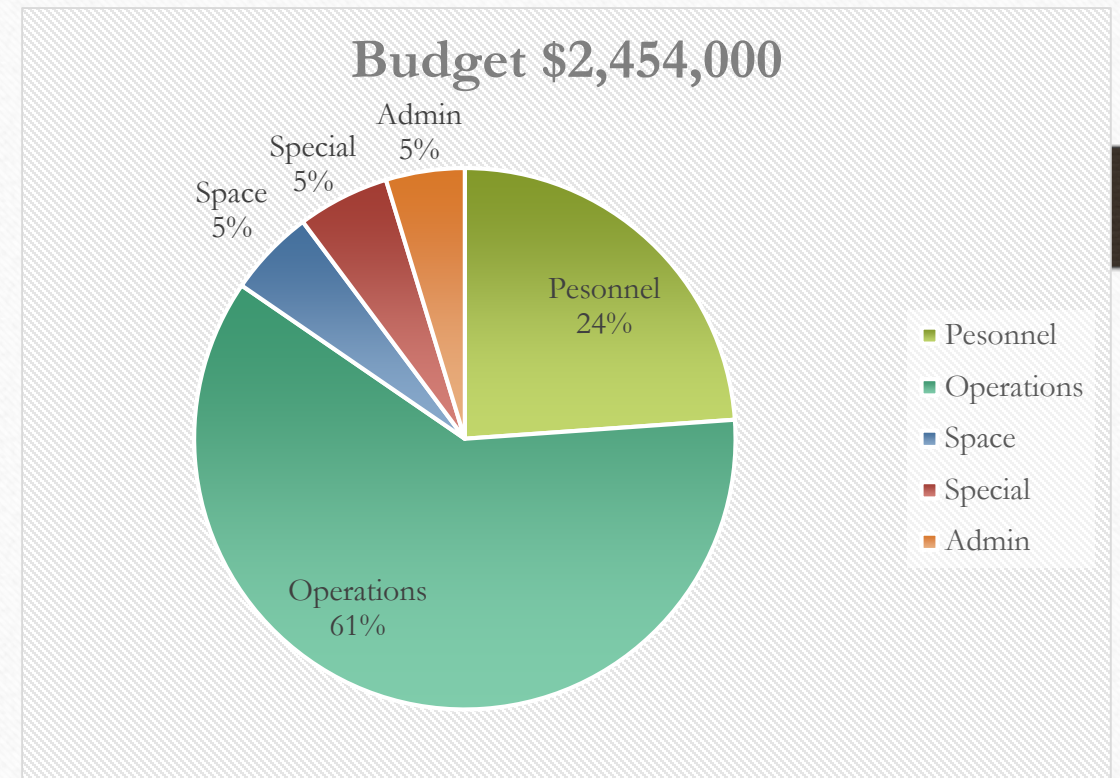
- **Porchlight, Inc**
- Nurse Disrupted, Inc
- Madison Street Medicine
- Kabba Recovery Services
- Catalyst for Change
- The Beacon
- City Community Development Division
- Dane County Housing Access & Affordability
- Dane County Human Services
- Homeless Services Board of Directors Liaison
- Dimension IV Madison Design Group
- City Engineering

Operating Budget Considerations²⁰²³

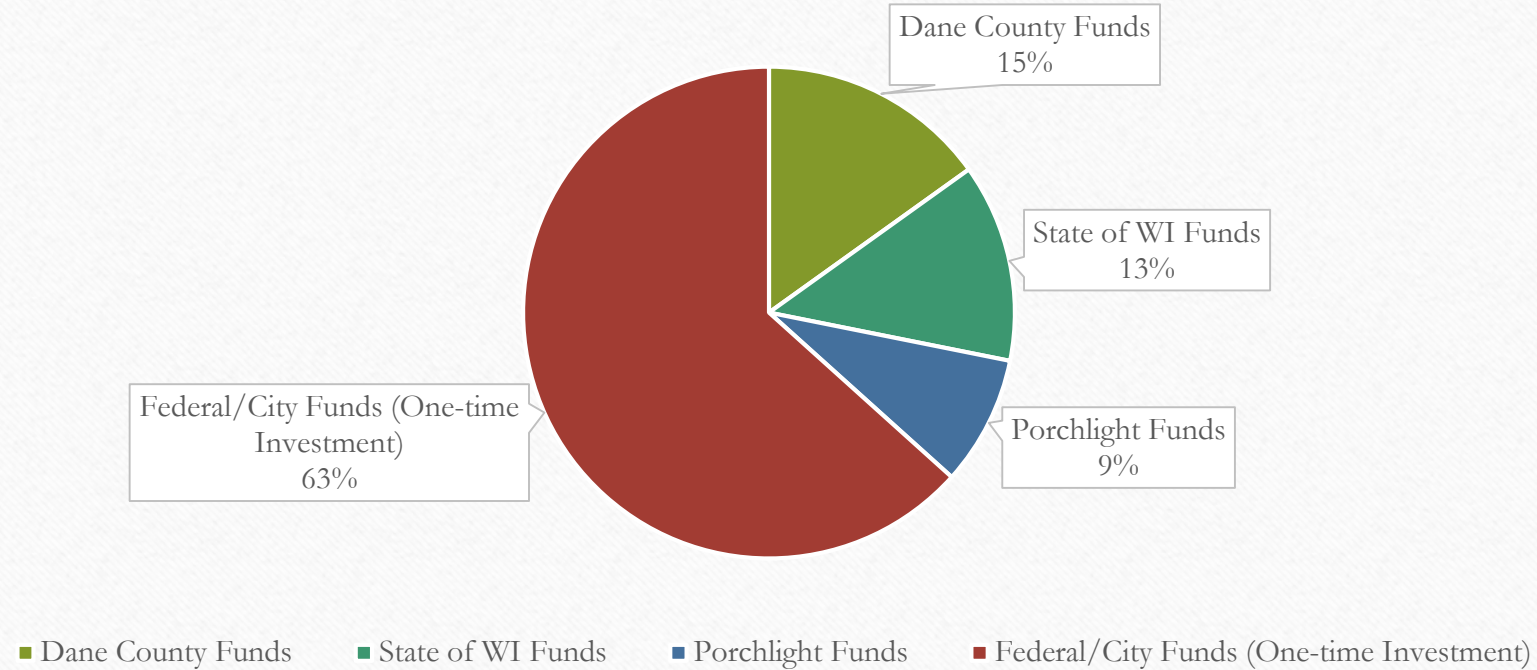
2019 Expenses (pre-pandemic)



2023 Expenses



2023 Funding Sources for Operations



A photograph of a man with short dark hair, wearing a white button-down shirt, sitting at a desk in an office. He is looking down at a laptop screen, with his hands near the keyboard. The background is slightly blurred, showing office shelves and a whiteboard. The word "Design" is overlaid in a large, black, serif font on the right side of the image. The entire image is framed by a white border and set against a light brown background with dark horizontal bars on the left and right sides.

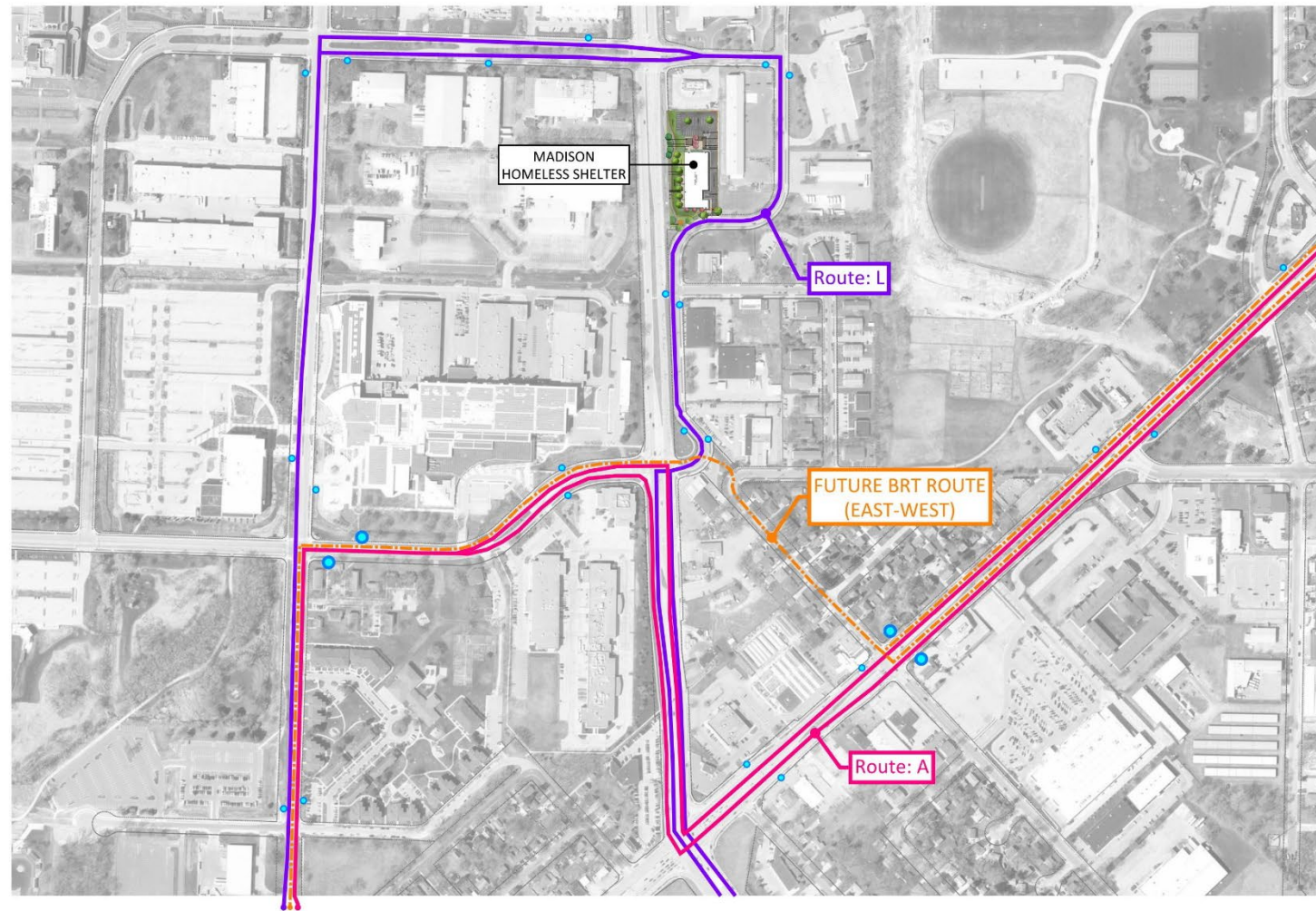
Design

Key Design Considerations From Survey

Survey respondents seek a facility that offers the following:

- A **clean, safe** space that offers some **privacy**
- Secure space for **storage** of personal belongings
- Flexible space for services to meet **housing** and **behavioral health needs**
- **Safety** features both in and outside the building

Design Considerations



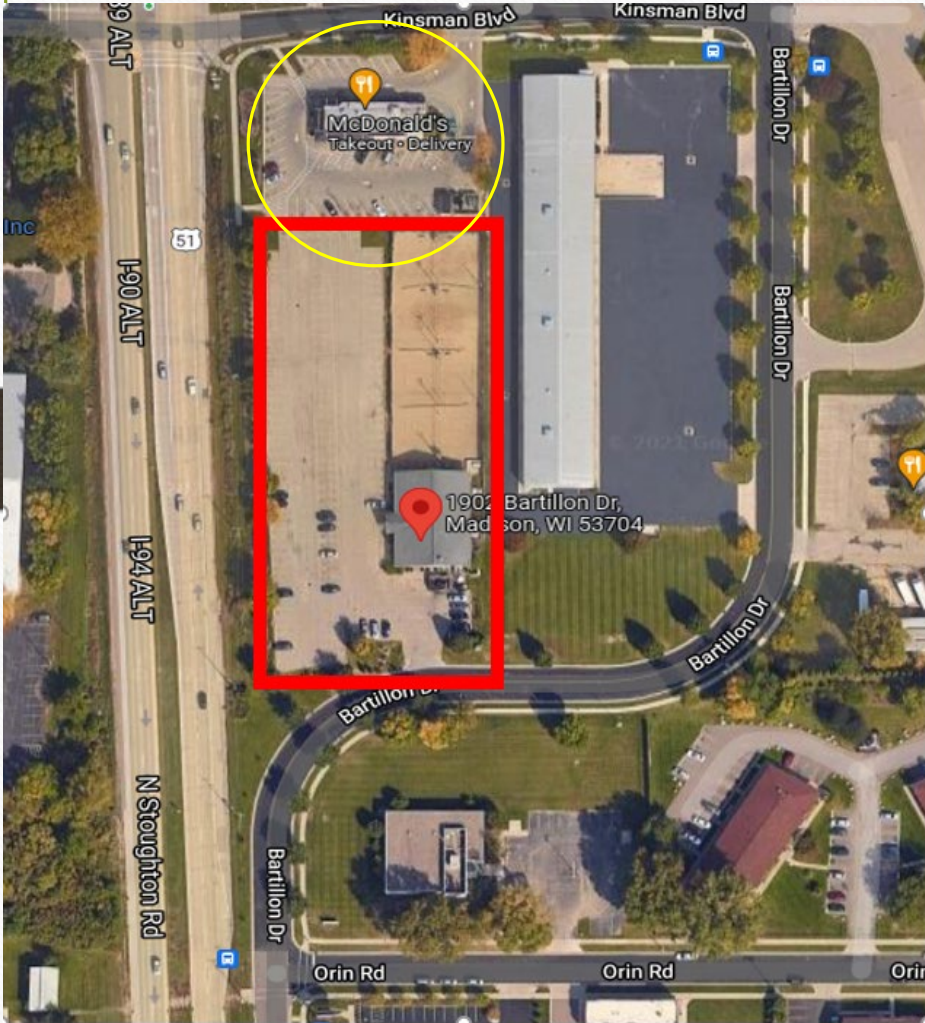
LEGEND

- Bus Stop
- Bus/BRT Stop
- Route L
- Route A
- - - Future BRT Route (East / West)

METRO TRANSIT PLAN



Design Considerations



- Located in a Transit Overlay District (TOD)
 - Requires at least 2 stories and affects set backs
- Sustainability is a Priority
 - Focus on reducing operating costs and achieving City goals
- Purchase of McDonalds site
 - Allows for future phases and better site access
- Percentage for Arts Ordinance
 - Requires 1% of budget to support public art at site.

Other Design Considerations

- Sleeping pods for up to 250 clients
 - 5 sleeping areas supporting 30-50 beds
 - Smaller sleeping area for safety of clients
- Commercial kitchen
 - Brings food service in house vs catering
- Isolation and Quarantine Rooms
 - Replaces pay to stay options

Design Considerations

SHELTER
(INTAKE/LOBBY)
1,801 SF

HYGENE
(TOILETS/SHOWERS)
3,190 SF

HEALTH
395 SF

NUTRITION
5,770 SF

SHELTER
DAY USE
1,520 SF

OFFICE
1,612 SF

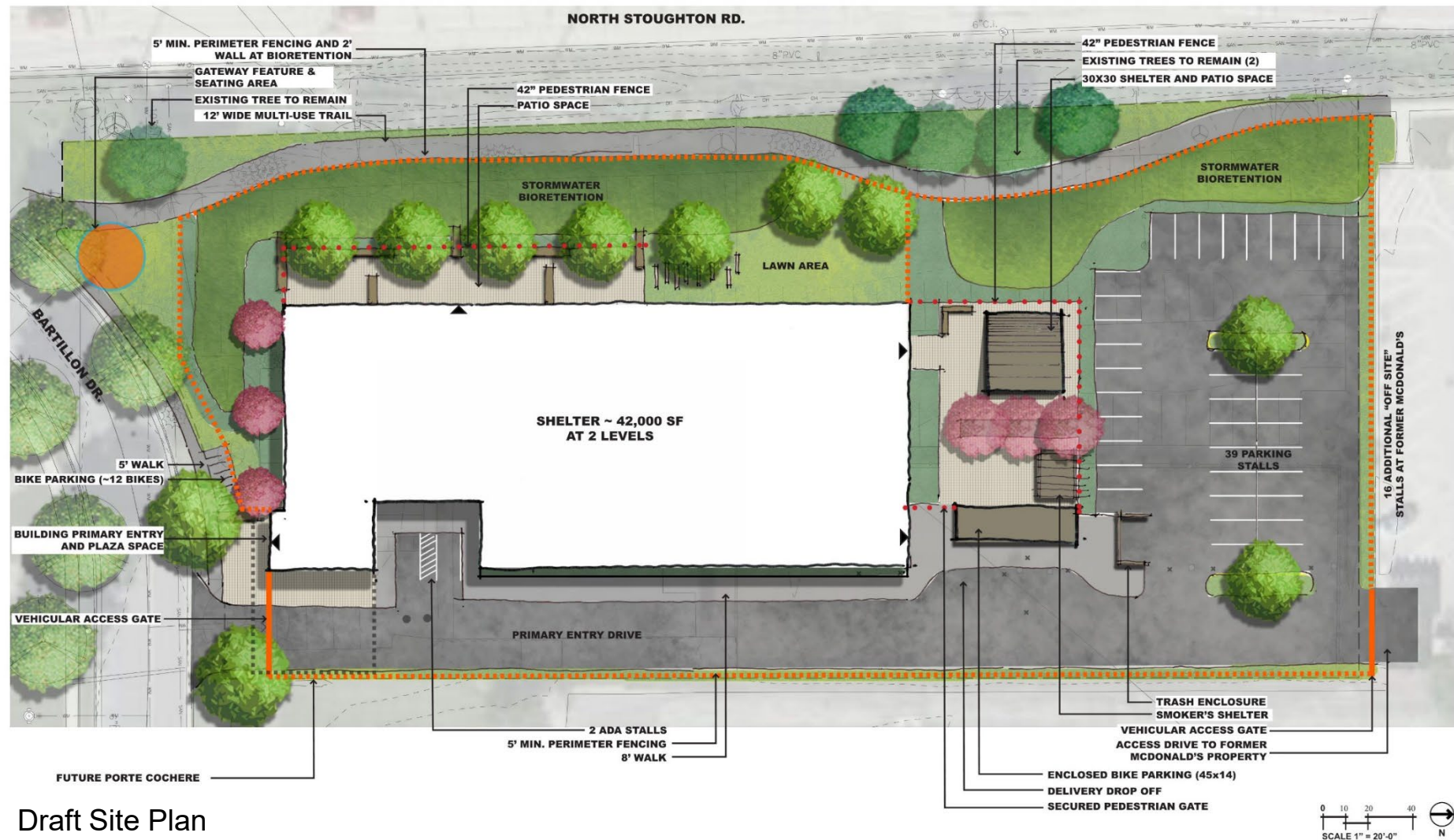
SHELTER BACK
OF HOUSE (BOH)
4,916 SF

CIRCULATION
3,840 SF

SLEEPING
15,180 SF

SUMMARY	SQUARE FOOTAGE	PERCENTAGE
Shelter (INTAKE, LOBBY)	1,801	5%
Hygene	3,190	8%
Health	395	1%
Nutrition	5,770	15%
Sleeping	15,180	40%
Shelter - Day Use	1,520	4%
Office	1,612	4%
Shelter - BOH	4,916	13%
Circulation	3,840	10%
Total Net SF	38,224	100%
Efficiency	10%	
TOTAL Gross SF	42,046	

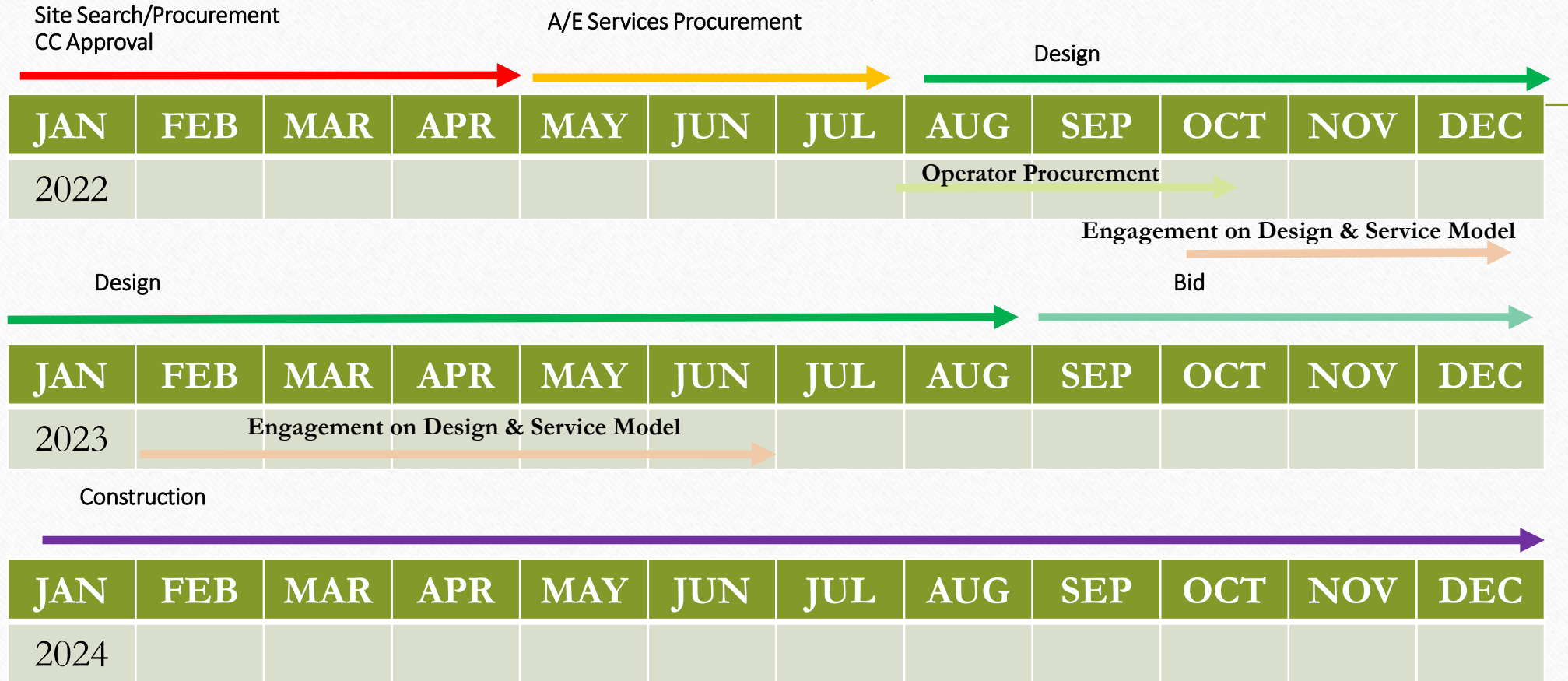
Design Considerations



Draft Site Plan

TENTATIVE

1904 Bartillon Project Schedule



Q1 2025 – TENTATIVE CONSTRUCTION COMPLETION