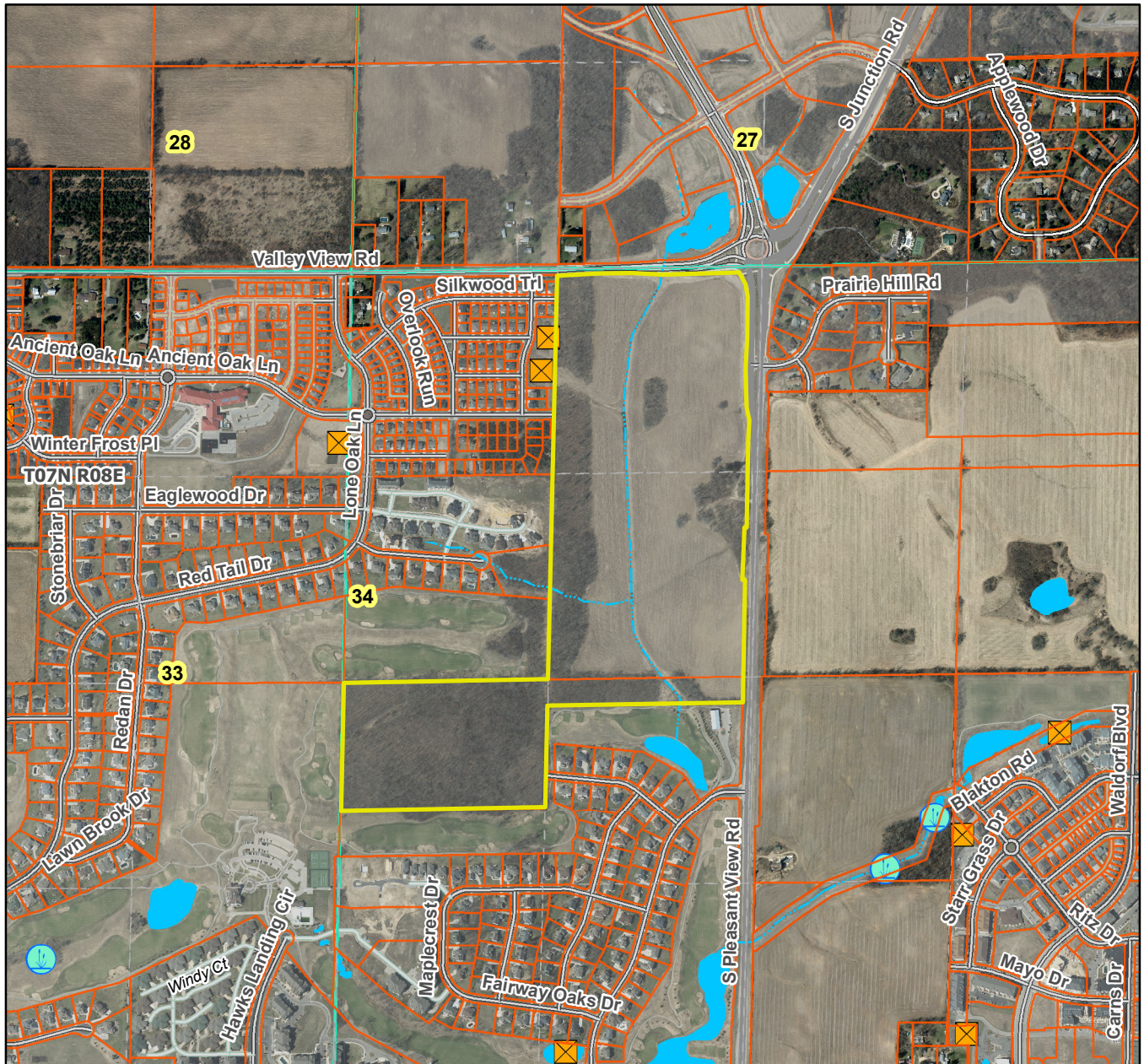


# University Research Park - Pioneer 1st Addition City of Madison T07N R08E, Section 34



**Plat consists of 18 lots, 103.6 acres.**

**Parks – OL's 7, 8, 9 and 10 are being reserved as open space.**

**Parkways – N/A**

**Expressways – N/A**

**Major Highways – CTH M to the east.**

**Airports – Dane County Regional Airport (18 mi)**

**Drainage Channels – Drainage easements shown throughout the plat.**

**Schools – Established.**

**Other Planned Public Improvements - bike path easement shown.**