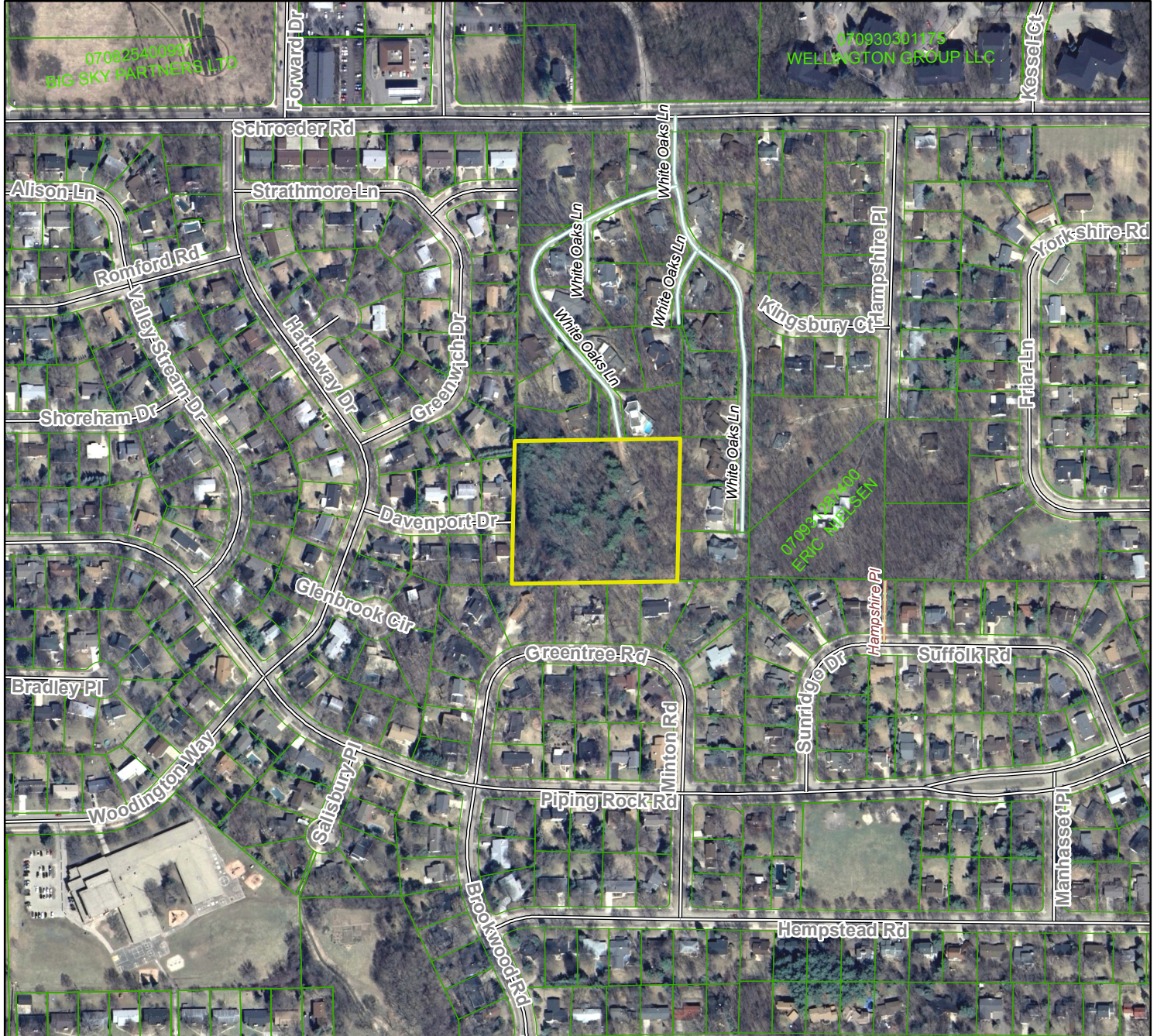


White Oak Ridge

T7N, R8E, Section 36, City of Madison



- Plat consists of 7 lots, 4.2 acres.
- Parks – None shown.
- Parkways – None shown.
- Expressways – None shown.
- Major Highways – Schroeder Rd. to the north.
- Airports – 14 miles to Dane County Regional.
- Drainage - arrows shown indicating the direction of surface drainage.
- Schools – Existing schools established.
- Other Planned Public Improvements - None shown.