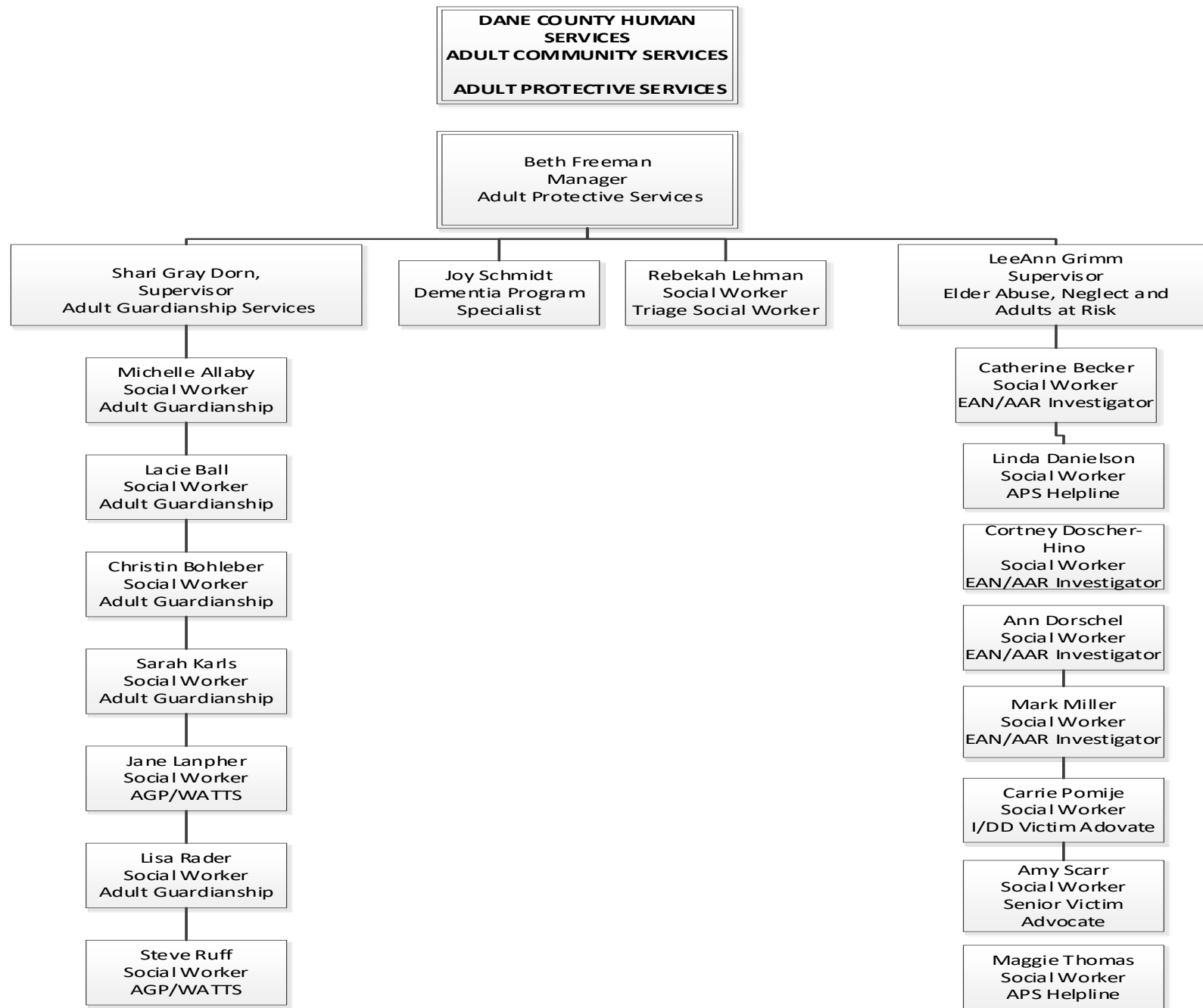


# Dane County Adult Protective Services 2019 Overview

NOVEMBER 2, 2020

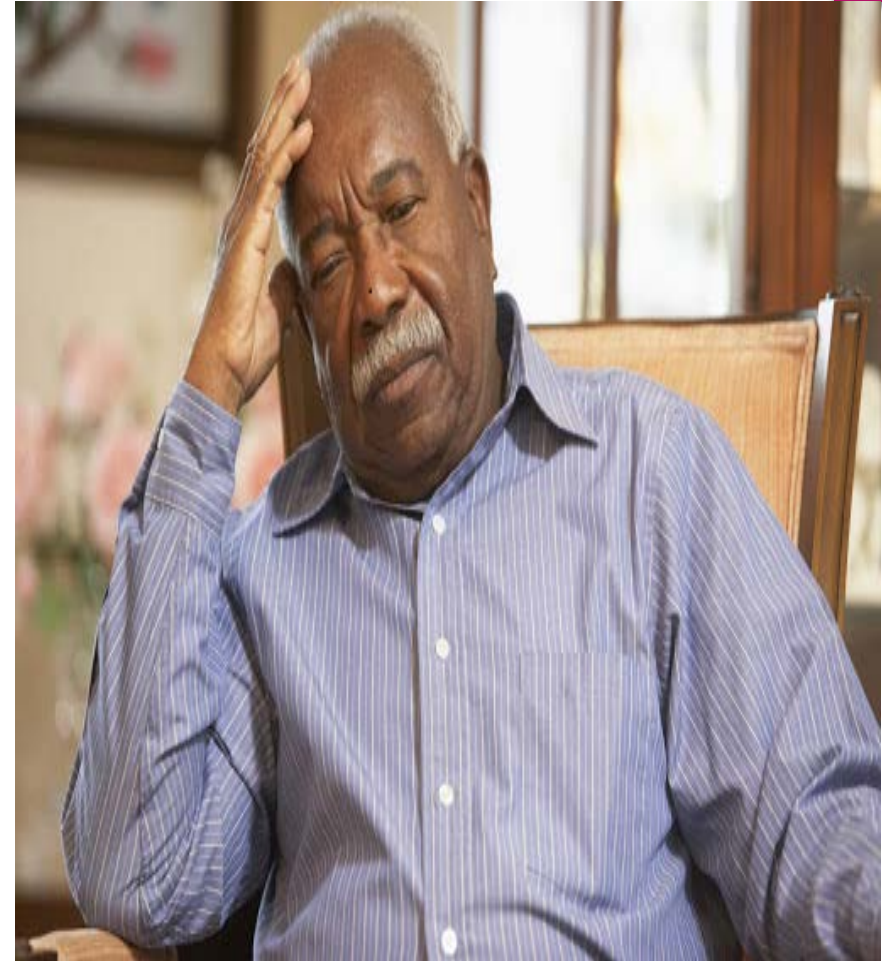
# Adult Protective Services

- ▶ Adult Guardianship Program
- ▶ Elder Abuse / Adults At Risk Investigations
- ▶ APS Helpline (2<sup>nd</sup> Intake Specialist added June 2020)
- ▶ Triage Social Worker
- ▶ Dementia Crisis Program Specialist (added to APS March 2020)
- ▶ Victim's Advocate Programs
  - ▶ I/DD Victim Advocate (18+ years)
  - ▶ Senior Victim Advocate (60 + Years)



# ELDER ABUSE IN DANE COUNTY

2019 OVERVIEW





# BREAKDOWN OF REPORTS – TYPE

## Financial Exploitation

- 180 Reports
- 36.10% of all reports

## Self-Neglect

- 126 Reports
- 25.30% of all reports

## Abuse

- Physical Abuse  
71 Reports  
14.30 % of all reports
- Emotional Abuse  
81 Reports  
16.30% of all reports

# BREAKDOWN OF REPORTS - VICTIMS

## By Age Group

▪ 60-69 yrs	199	40.40%
▪ 70-79 yrs	156	31.70%
▪ 80-89 yrs	99	20.10%
▪ 90+ years	38	7.70%

## By Gender

▪ Male	199	40.40%
▪ Female	293	59.60%

## By Race

• White	328	66.70%
• Black	29	5.90%
• Pacific Islander	0	0.00%
• American Indian	1	0.20%
• Asian	5	1.00%
• Other	21	4.30%

# BREAKDOWN OF REPORTS - ABUSER

## FAMILY

• Daughter	44	11.80%
• Son	76	20.40%
• Spouse	34	9.10%
• Sibling	3	0.80%
• Grandchild	28	7.50%
• Other Relative	22	5.90%

## OTHER

• Friend	31	8.30%
• Unknown	49	13.20%
• Other	60	16.10%
• Home Care	1	0.30%
• Facility	8	2.20%

# ADULT GUARDIANSHIP PROGRAM

2019 Overview for Persons  
over 60 years old





# ADULT PROTECTIVE SERVICES – AREAS OF FOCUS

- ▶ Completed 583 Protective Placement reviews in 2019
- ▶ Petitioned for 131 Guardianships (Person and/or Estate)
- ▶ 138 Face to Face visits
- ▶ Facilitated a training for both paid and unpaid guardians as to their roles, the guardianship process (Fall 2019)
- ▶ Monitor 611 persons under guardianship & protective placement

# APS – More than EAN/AAR & AGP

- ▶ Facilitate EACCR & ID CCRs, participate in COSC
- ▶ Facilitate Hoarding Task Force & FAST interdisciplinary meetings
- ▶ Annual Domestic Violence in Later Life Conference
- ▶ Working with MCOs & ICAs to develop shared training curriculum
- ▶ Present to financial institutions, law enforcement and other community groups about role of APS in Dane County
- ▶ Working to develop more effective crisis responses for persons with dementia
- ▶ Working with statewide APS committee on best practice tool kit
- ▶ Goal to create a more “live” APS helpline response system
- ▶ Piloting a new assessment tool of our of the University of MI to assess risk of Financial Exploitation – Financial Vulnerability Assessment Tool

Thank you

BETH FREEMAN, CAPSW  
MANAGER  
ADULT PROTECTIVE SERVICES  
608-242-6448  
FREEMAN.BETH@COUNTYOF  
DANE.COM