

Final Plat - Astor Drive Addition to Stoner Prairie City of Fitchburg

Plat consists of 3 lots, 0.99 acres.

Parks - None shown.

Parkways - N/A

Expressways - N/A

Major Highways - South Seminole to the west.

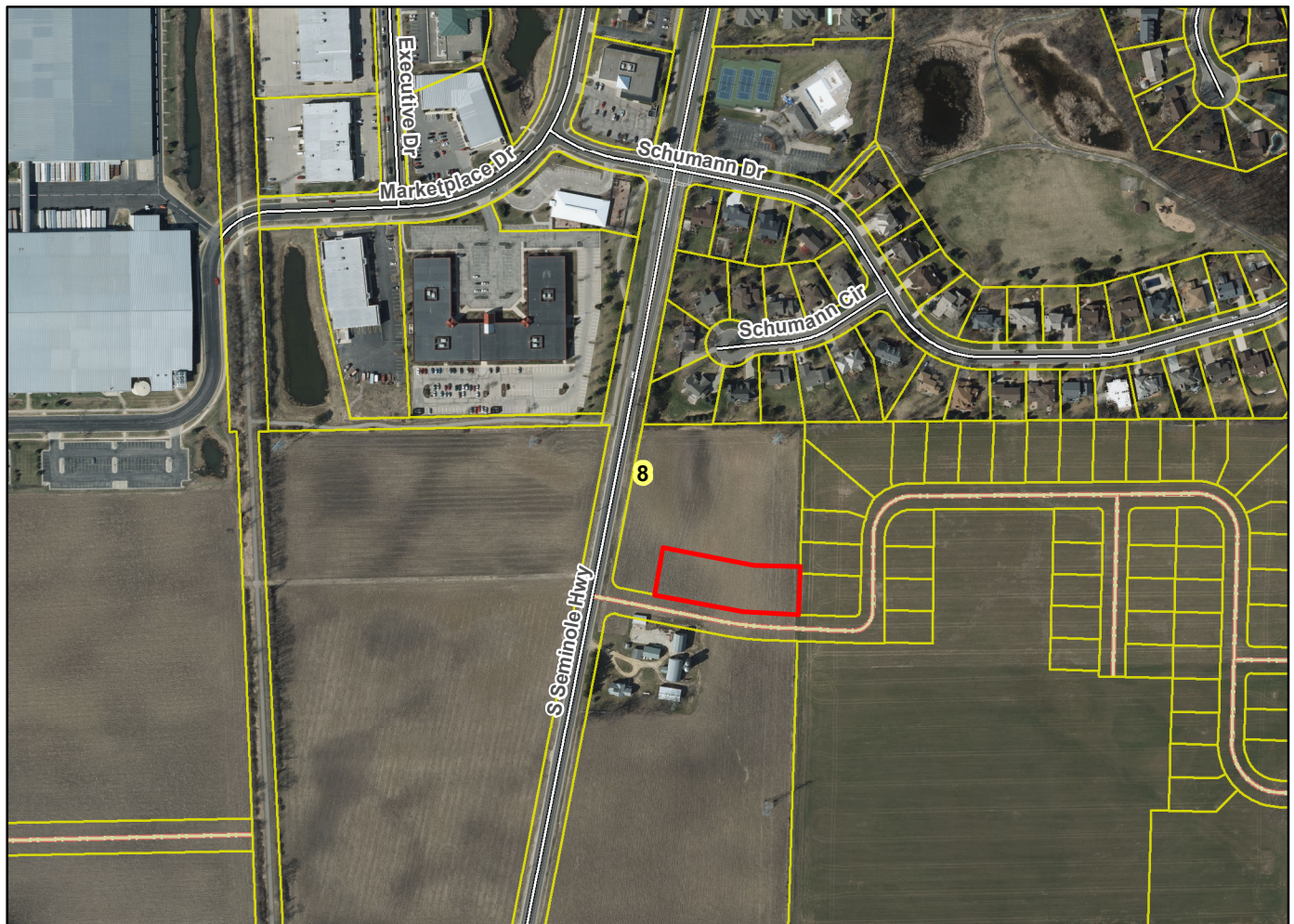
Airports - Dane County Regional

Drainage Channels - All lots subject to public easements for drainage purposes and drainage arrows shown.

Schools - established.

Other Development -

Plats of subdivisions located in all other incorporated municipalities shall be submitted to the committee, as provided by section 236.12(2)(b) of the Wis. Stats., for the purpose of determining whether the committee has any objection to the plat. The basis for any objection to any such plat shall be that the plat conflicts with parks, parkways, expressways, major highways, airports, drainage channels, schools or other planned public developments.



Motion to certify with no objections: _____, Second: _____ Vote: _____