



UW-MADISON EXTENSION  
DANE COUNTY

# Dane County 4-H

Lisa Curley

4-H Program Educator

curley.lisa@countyofdane.com

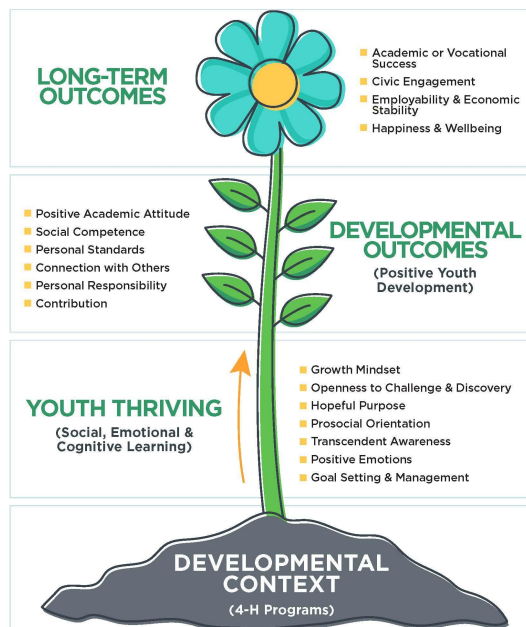


## 4-H Thriving Model

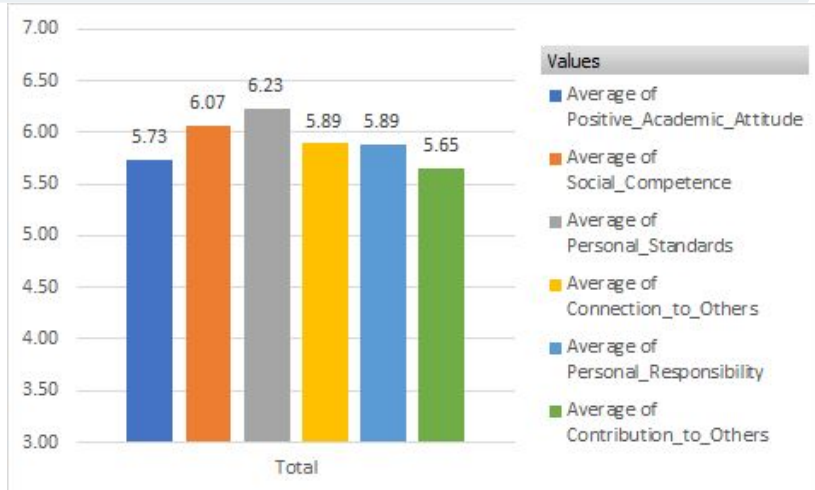
The survey measures:

**Program Quality** (the roots on the flower), **Youth Thriving** (shorter term impact on a youth's social, emotional, and cognitive learning) and longer term **Developmental Outcomes** on 4-H youth.

The survey will not only track impact, but ensure high quality programming continues to be delivered.



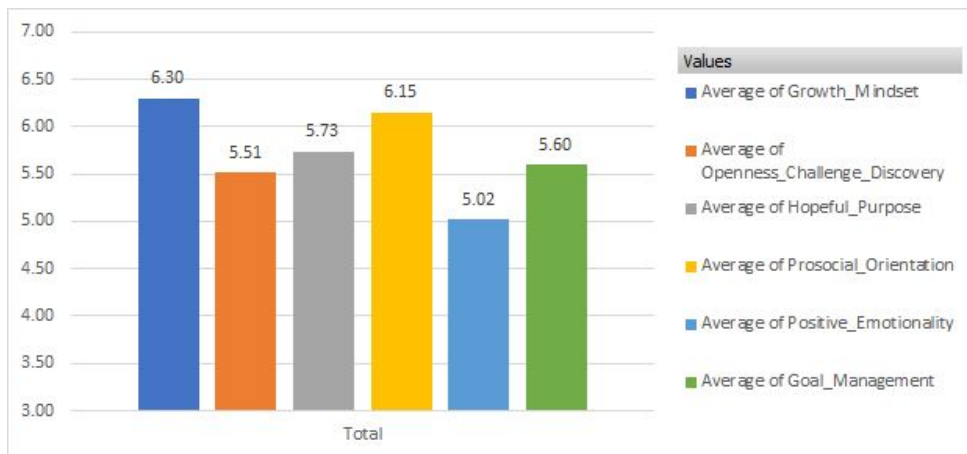
## Developmental Outcome - Dane County



UW-MADISON EXTENSION  
DANE COUNTY



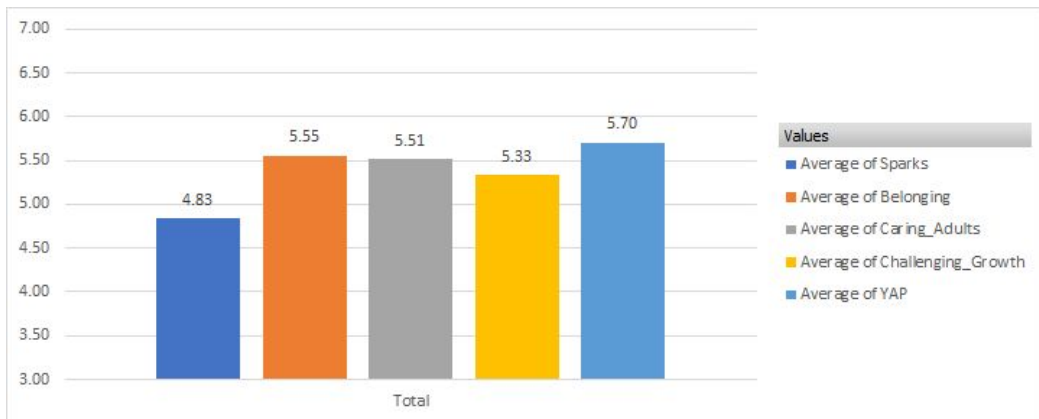
## Youth Thriving - Dane County



UW-MADISON EXTENSION  
DANE COUNTY



## Program Quality - Dane County



## Program Quality

- Successes & Opportunities
  - Youth/Adult Partnerships
  - Sparks



# Youth/Adult Partnership

4-H Programs help youth learn about new topics, find their passion, and are a big part of who they are.



## Annual Leader/Older Youth Training

### Three Parts of A Meeting

#### **Leading**

This is the decision making part of the meeting. In 4-H YOUTH VOICE is important and most meetings are led by youth.

#### **Learning**

4-H is all about education. This could be a member demonstration, a guest speaker, community service, or a project.

#### **Laughing**

Having fun keeps everyone engaged and involved. It also helps youth build relationships with their peers and volunteers.



## Dane County 4-H Education Meetings

- Interactive Zoom Meetings
- Led by youth leaders
- Planning, Communication



Can you tell which is a baby turkey?



UW-MADISON EXTENSION  
DANE COUNTY

## Dane County 4-H Dog Project

- Outside In-Person Event
- Alliant Energy Center
- Virtual Learning Opportunities



UW-MADISON EXTENSION  
DANE COUNTY

## Youth/Adult Partnerships in 2021-2022

### Online 4-H Club Resources

A pre-pilot research project developed to help new and seasoned 4-H club and group volunteers by sharing resources in a Google Drive space.

### Annual Leader Training

The statewide theme of Youth-Adult Partnership will be shared in a variety of training opportunities for adult volunteers and youth leaders.

### Educational Meetings

Additional educational programs will be developed utilizing 4-H curriculum and youth leaders as presenters.



UW-MADISON EXTENSION  
DANE COUNTY



# Sparks

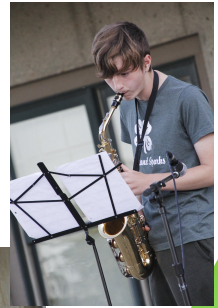
4-H Programs help youth learn about new topics, find their passion, and are a big part of who they are.



UW-MADISON EXTENSION  
DANE COUNTY

## Dane County 4-H Performers Festival

- Outside In-Person Event
- Safe environment, Self esteem
- Lussier Heritage Center Partnership



## Dane County 4-H Day Camp

- 3-8th grade (42% community)
- HS Counselors & Adult Volunteers
- Schumacher Farm Partnership



## Sparks in 2021-2022

### Project Resource Boxes

Resources grounded in 4-H curriculum developed for group use that can be checked out by clubs or groups with hands on activities and related equipment.

### 4-H Science Constellation

A collaboration with UW Biotech Center, UW Space Place and the Wisconsin Science Museum. Monthly STEM opportunities in South Madison open to the community.

### Welcoming New Families

Developed to provide basic information about 4-H and opportunities to learn more at their own pace.

<https://fyi.extension.wisc.edu/dane4hyouth/files/2021/08/Dane-County-4-H-Family-Handbook-2021-2022-rev8.21.pdf>



UW-MADISON EXTENSION  
DANE COUNTY



# Thank you!

Any questions?

Lisa Curley

Dane County 4-H Program Educator

■ [curley.lisa@countyofdane.com](mailto:curley.lisa@countyofdane.com)



UW-MADISON EXTENSION  
DANE COUNTY