

# Dane County Community Manure Storage Cost Share Program

2016-ACT-608, Approved by LCC 3/16/2017

## FUNDING

---

Funding made available through 2014, 2015, 2016, and 2017 adopted Dane County Budgets

Budget Line Item:        *Community Manure Storage*  
Available Funding:       *\$1,100,000.00 as of 2/27/2017*

## BACKGROUND

---

Reducing manure and nutrient runoff remains a top priority in the county's effort to improve water quality in our lakes and streams. Manure has long been used by agricultural producers as a nutrient source to grow crops. However, there are several factors that make it challenging to apply these nutrients in the most efficient and environmentally conscious manner. Some examples of these challenges include:

- The distance between cropland and livestock operations where manure is produced.
- The type of crops that are being grown and their ability to receive manure.
- Environmental factors such as rain and freezing temperatures.
- Transportation logistics and weight restrictions on local roads during the spring thaw.
- The high volume/low nutrient concentration of manure.
- Limited financial resources for the construction of expensive manure storage structures.

Solutions to many of these challenges are available within the agricultural market; however, cost and feasibility for small and medium scale livestock operations (<700 cows) can be challenging as these operations may not have the resources to explore alternative manure management technologies and handling systems.

## PURPOSE

---

The purpose for this cost share program is to help improve the overall water quality of the Upper Yahara River Watershed (see attachment "A") by reducing the adverse environmental impacts of manure and nutrients on both surface and ground water. This will be accomplished by providing small to medium sized livestock operations with funding to evaluate and implement alternative manure management strategies that reduce the risk of manure and nutrient transport to both surface and groundwater.

Funding is available through two primary tracks:

1. Funding for the storage and management of manure in the Upper Yahara Watershed for manure that is produced within the watershed.

2. Funding for community based storage structures in which multiple producers within the Upper Yahara Watershed work together to store and manage their manure.

## OBJECTIVES

---

Along with improving water quality, the following objectives will also be achieved through this cost sharing program:

- Redistributing and directing manure to cropland areas that currently receive little or no manure applications.
- Reducing the application of manure during critical times of the year (frozen and snow covered ground, water saturated field conditions, etc.) when manure has the highest probability of running off and entering nearby streams.
- Incorporating innovative manure management strategies and technologies into current manure management systems.

## PARTICIPATION

---

Producers wishing to participate in this cost share program are encouraged to contact Dane County Land Conservation staff as soon as possible to discuss project opportunities and funding options. Funding is available as follows:

- 1) A “traditional” Dane County cost share agreement - The cost share agreement process utilizes traditional planning and Land Conservation Committee (LCC) approval with practices meeting specific design standards and specifications. Only small and medium scale livestock operations (<700 cows); which currently have no manure storage capacity, will be eligible for this cost share program.

### DANE COUNTY COST SHARE AGREEMENT

#### Agreement Conditions

- Producer(s) agree that all manure storage structures and management strategies will be in accordance with Dane County Code of Ordinance Chapter 14.
- Producer(s) agree to provide temporary emergency manure storage for other farming operations at Dane Counties request in amounts not greater than 10% of the structures design storage volume for a period of not greater than 3 months.
- Producer(s) agree to have a minimum combined storage capacity of 8 months from all manure storage structures in which manure generated by them is stored in.
- The field application of any stored manure will be the responsibility of the producer who generated it and land applied in accordance with Dane County Code of Ordinance – Chapter 14.

- The application of manure from December 1<sup>st</sup> to March 31<sup>st</sup> is prohibited without prior written approval from the Director of the Dane County Land and Water Resources Department.

#### Cost Share Rates

Maximum cost rates will be tiered and based upon the number of producers participating.

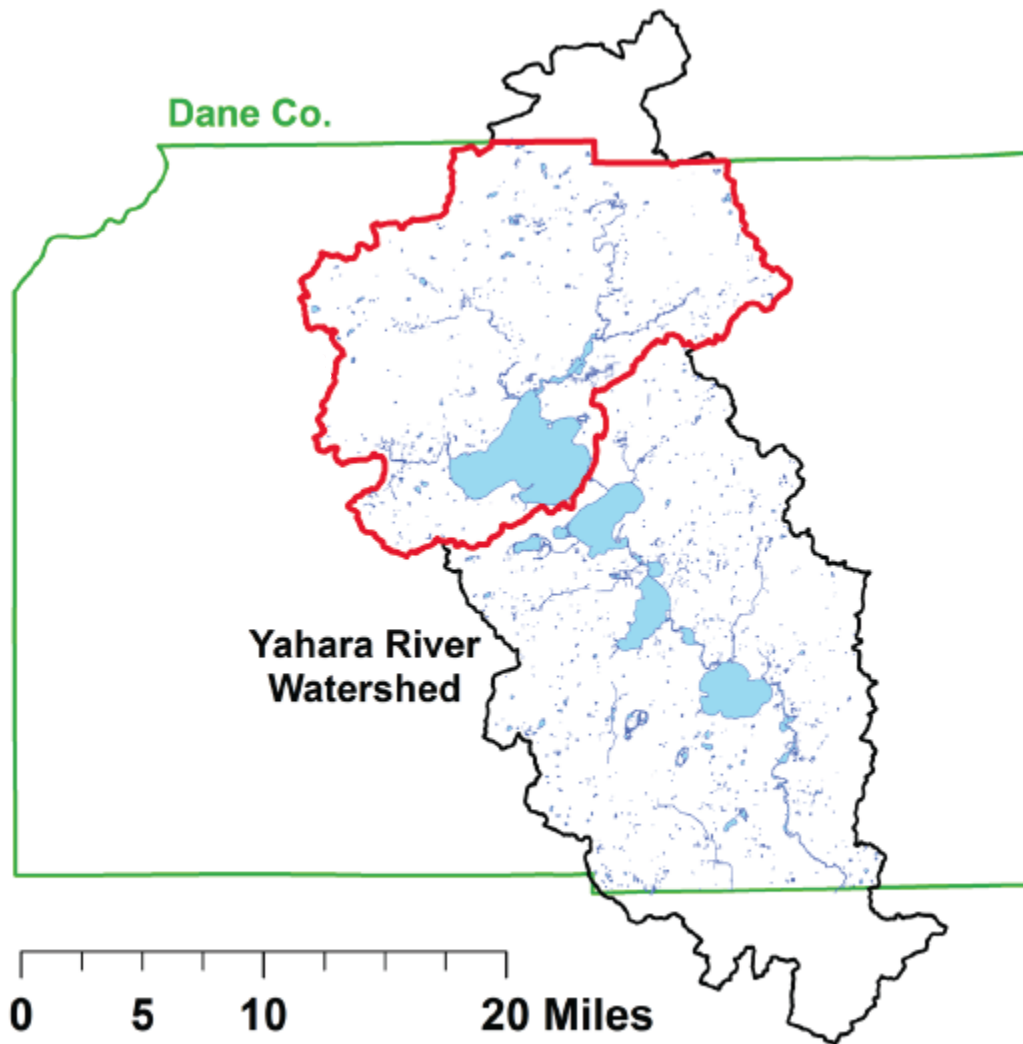
- One participant – 70% cost share not to exceed \$120,000
  - Two participants – 80% cost share not to exceed \$120,000 per participant
  - Three or more participants – 90% cost share not to exceed \$120,000 per participant
- \*Percent cost sharing is based on actual costs

Producers may request up to 10% of the agreement total be available to them upon Land Conservation Committee (LCC) approval. These funds are to be used solely for engineering costs associated with the design of the manure storage structure.

#### Agreement Process

- Signup period is effective immediately upon approval by the LCC of this cost share program and will continue until all funds are allocated
- The LCC approves individual cost share agreements and payments
- All decisions of the LCC are to be considered final

Attachment "A": Upper Yahara Watershed



**Source:** Figure 3 from Larson, R. A. and M. Sharara (eds.). 2016. Evaluation of Manure Storage Capital Projects in the Yahara River Watershed. University of Wisconsin – Extension and UW – Madison College of Agricultural and Life Sciences, Biological Systems Engineering.