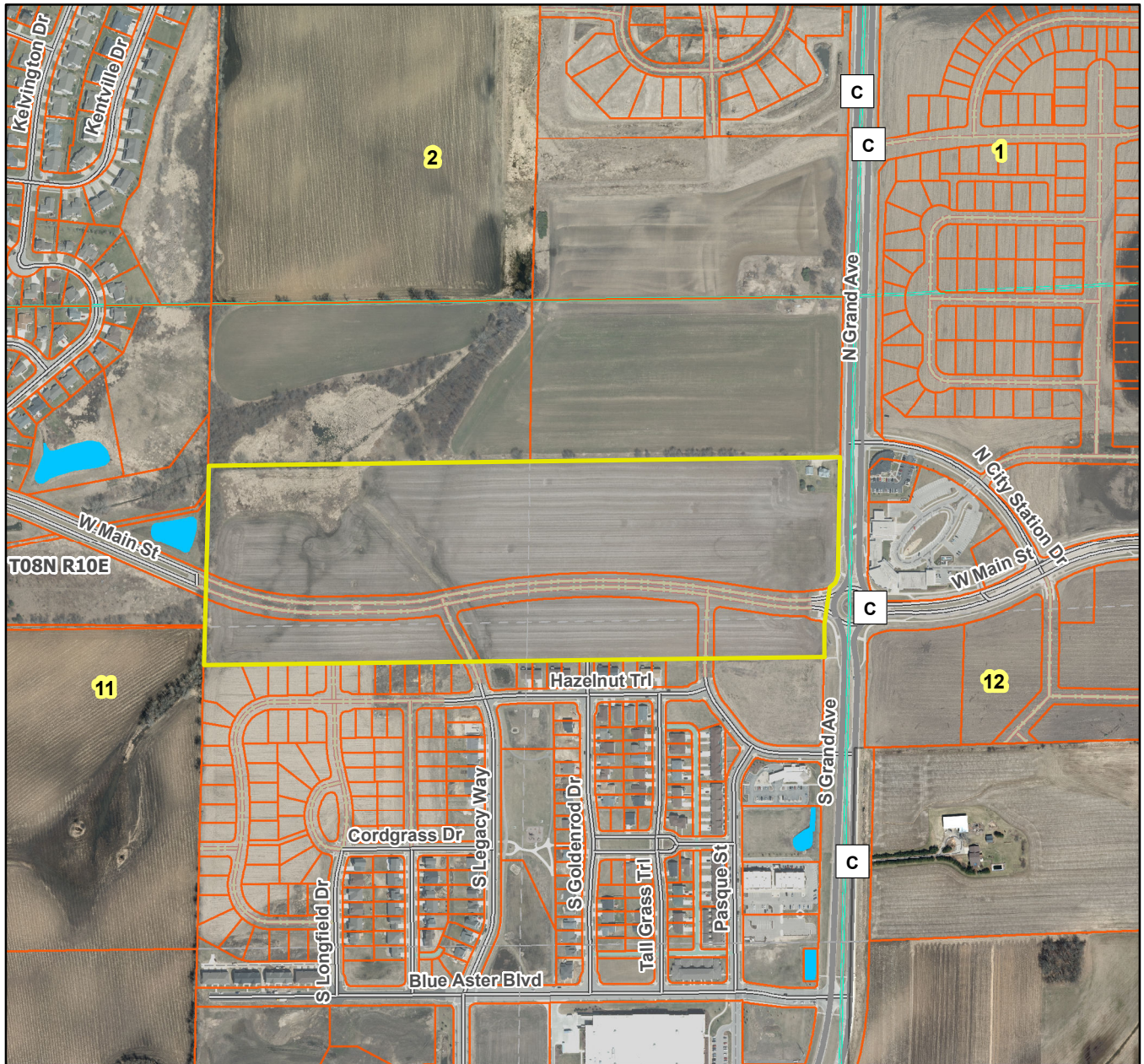


Western Sunset Estates City of Sun Prairie T08N R10E, Section 11



Plat consists of 43 lots, 40.2 acres (Division of lots 1,2 and 3 of CSM 13718)

Parks – No public dedications.

Parkways – N/A

Expressways – N/A

Major Highways – CTH C (North Grande Ave.) to the east.

Airports – Dane County Regional Airport (8 mi)

Drainage Channels – All lots are subject to public easements for drainage purposes.

OL's 2 & 4 to be dedicated to the city of Sun Prairie for stormwater management.

Schools – Established.

Other planned public developments - A 10' wide bike path on the east side of North Legacy Way from West Main St. to the north plat line.