

# Final Plat - Whispering Coves

## City of Verona

Plat consists of 228 lots, 27 outlots, 192.9 acres.

**Parks - Several outlots dedicated for parkland.**

**Parkways - none**

**Expressways - N/A**

**Major Highways - CTH PD to the north and CTH M to the east.**

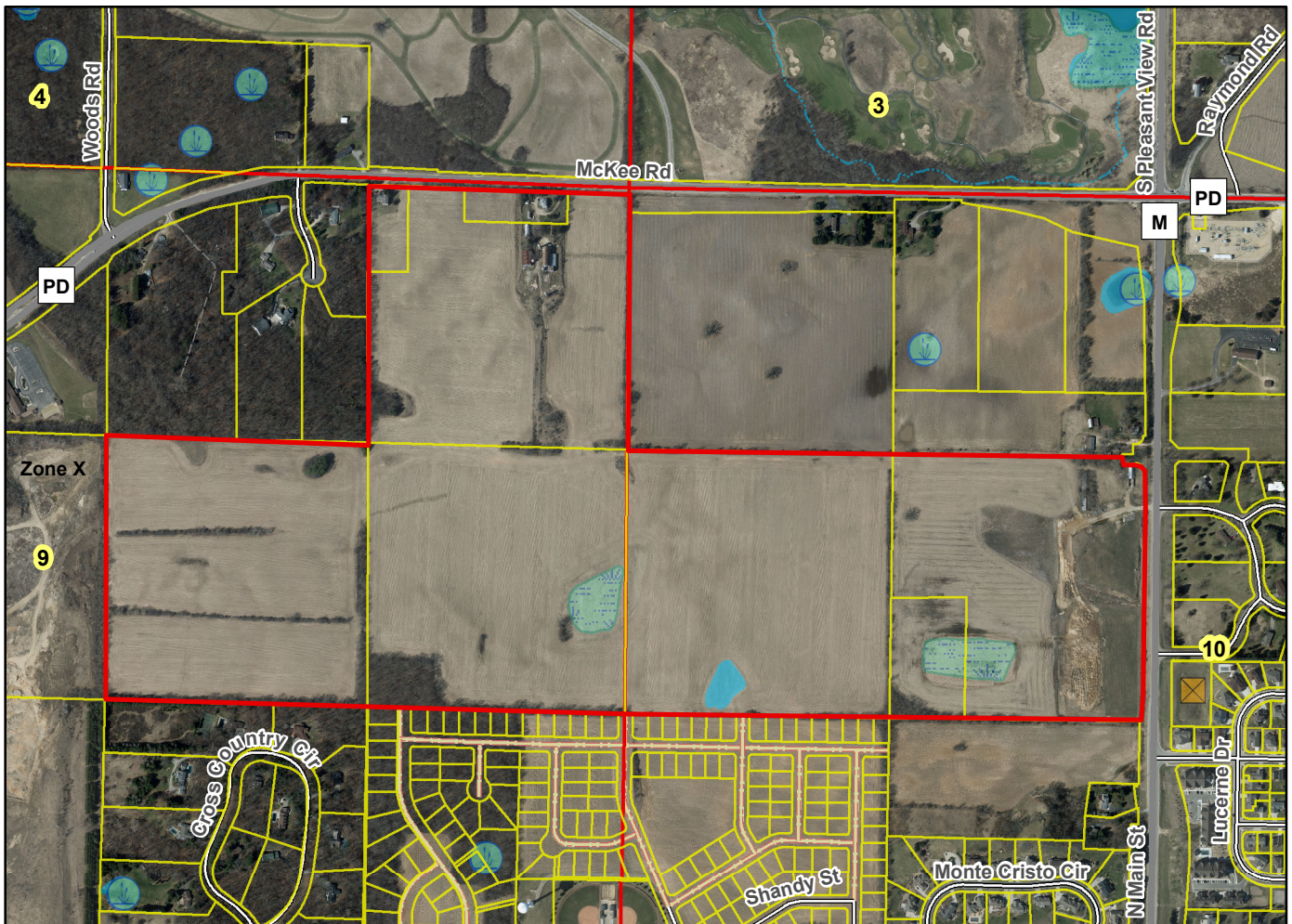
**Airports - Dane County Regional**

**Drainage Channels - Several lots dedicated for stormwater purposes.**

**Schools - established**

**Other Development - All existing structures will be removed.**

Plats of subdivisions located in all other incorporated municipalities shall be submitted to the committee, as provided by section 236.12(2)(b) of the Wis. Stats., for the purpose of determining whether the committee has any objection to the plat. The basis for any objection to any such plat shall be that the plat conflicts with parks, parkways, expressways, major highways, airports, drainage channels, schools or other planned public developments.



Motion to certify with no objections: \_\_\_\_\_, Second: \_\_\_\_\_ Vote: \_\_\_\_\_