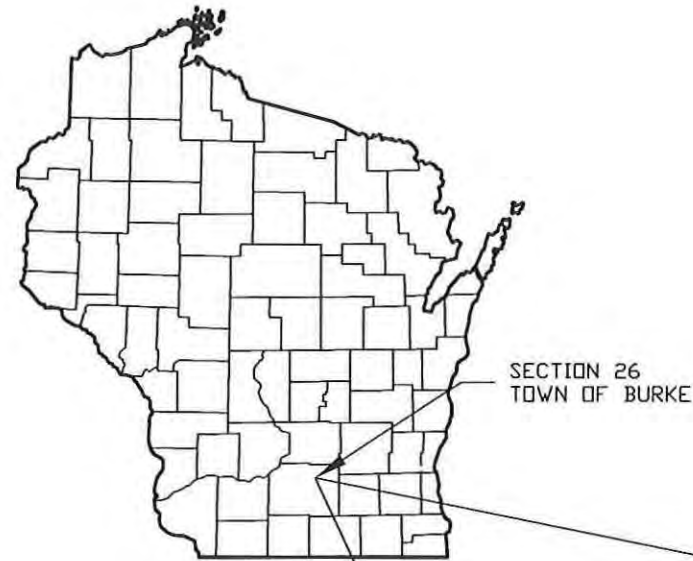


# SITE/OPERATIONS PLAN

## MADISON CRUSHING & EXCAVATING CO., INC.

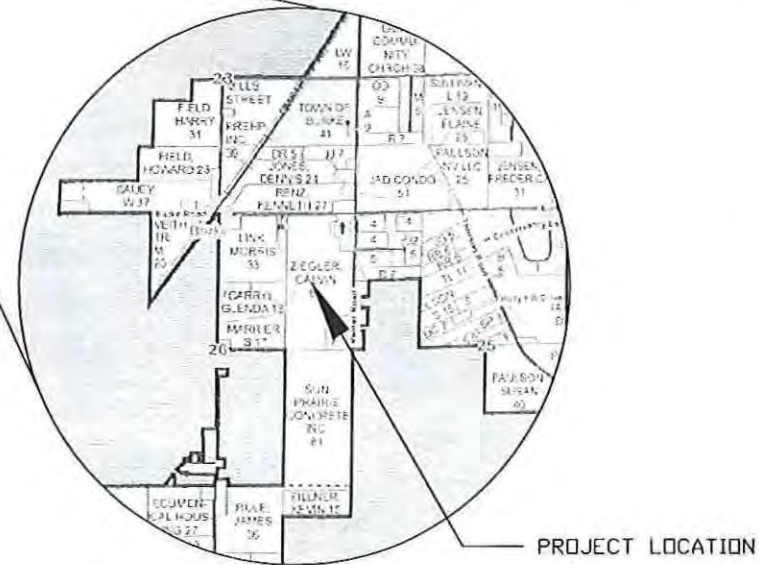
### PART OF SEC. 26 TOWN OF BURKE

### DANE COUNTY, WISCONSIN



INDEX OF SHEETS:

- 1 TITLE SHEET
- 2 OVERALL SITE PLAN
- 3 EXISTING NORTHERN EXPANSION AREA
- 4 PROPOSED NORTHERN EXPANSION AREA
- 5 PROPOSED FINAL GRADING NORTHERN EXPANSION AREA
- 6 EXISTING NON-CONFORMING PIT AREA
- 7 PROPOSED FINAL GRADING NON-CONFORMING PIT AREA
- 8 EXISTING SOUTH PIT AREA
- 9 PROPOSED FINAL GRADING SOUTH PIT AREA
- 10 NEARBY PROPERTIES



LOCATION MAP



TO OBTAIN LOCATION OF PARTICIPANTS' UNDERGROUND FACILITIES BEFORE YOU DIG IN WISCONSIN

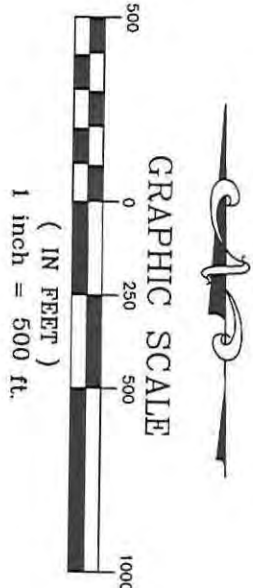
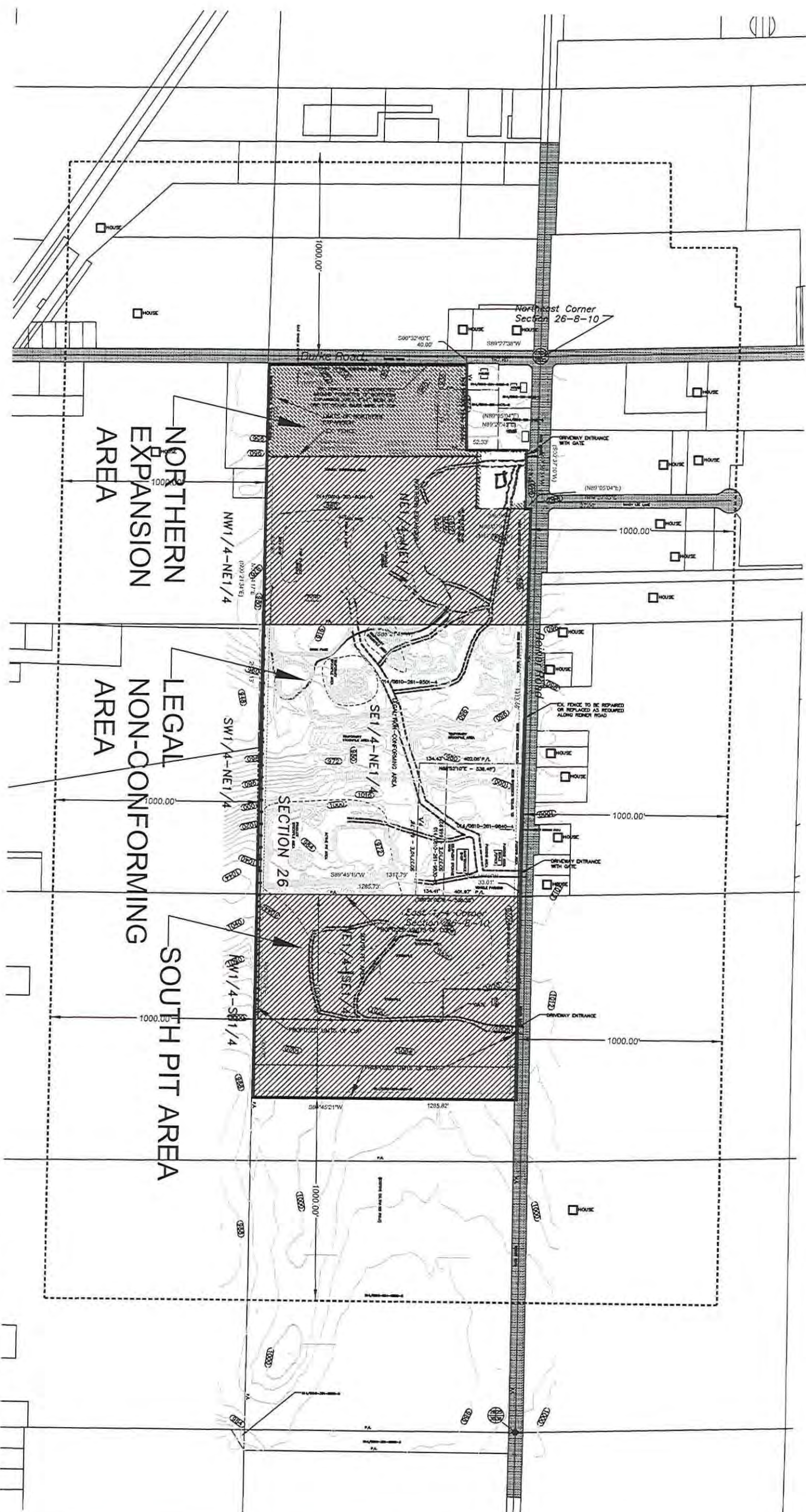
CALL DIGGERS HOTLINE  
1-800-242-8511  
TOLL FREE  
TELEFAX 1-800-338-3860  
TOC (FOR HEARING IMPAIRED)  
1-800-542-2289  
WIS. STATUTES 182.0175 (1979)  
REQUIRES MINIMUM OF 3  
WORKING DAYS NOTICE BEFORE  
YOU EXCAVATE.

NOTE:  
UTILITY LOCATIONS SHOWN ON PLANS ARE APPROXIMATE AND  
CONTRACTOR SHALL HAVE APPROPRIATE UTILITY MARK EXACT  
LOCATIONS PRIOR TO CONSTRUCTION.

Dec 12, 2016, 7:47am, H:\2005\10389-MC&E New Quarry\dwg\CUP-D01.dwg

TITLE SHEET	OWNER	OPERATOR	No.	Date	Revision	By
CUP SITE/OPERATION PLAN PART OF SEC. 26, T8N, R10E, TOWN OF BURKE, DANE CO., WI	MADISON CRUSHING & EXCAVATING CO., INC. 5185 REINER ROAD MADISON, WI 53718	MADISON CRUSHING & EXCAVATING CO., INC. 5185 REINER ROAD MADISON, WI 53718	Project 0316-10486	Date DECEMBER 9, 2016	Scale AS SHOWN	Belken Engineering, Inc. 1840 ESSEX DRIVE SUN PRAIRIE, WI 53590 608-225-7180
Sheet						
1 of 10						





2 of 10	OVERALL SITE PLAN	OWNER	OPERATOR	Project 0316-10486	No. Date	Revision	By	BELKEN ENGINEERING, INC. 1840 ESSEX DRIVE SUN PRAIRIE, WI 53590 608-225-7180
	CUP SITE/OPERATION PLAN PART OF SEC. 26, T8N, R10E, TOWN OF BURKE, DANE CO., WI	MADISON CRUSHING & EXCAVATING CO., INC. 5185 REINER ROAD MADISON, WI 53718	MADISON CRUSHING & EXCAVATING CO., INC. 5185 REINER ROAD MADISON, WI 53718	DRAWN BY: JDB Date DECEMBER 9, 2016 CHECKED BY: JOB Scale AS SHOWN				

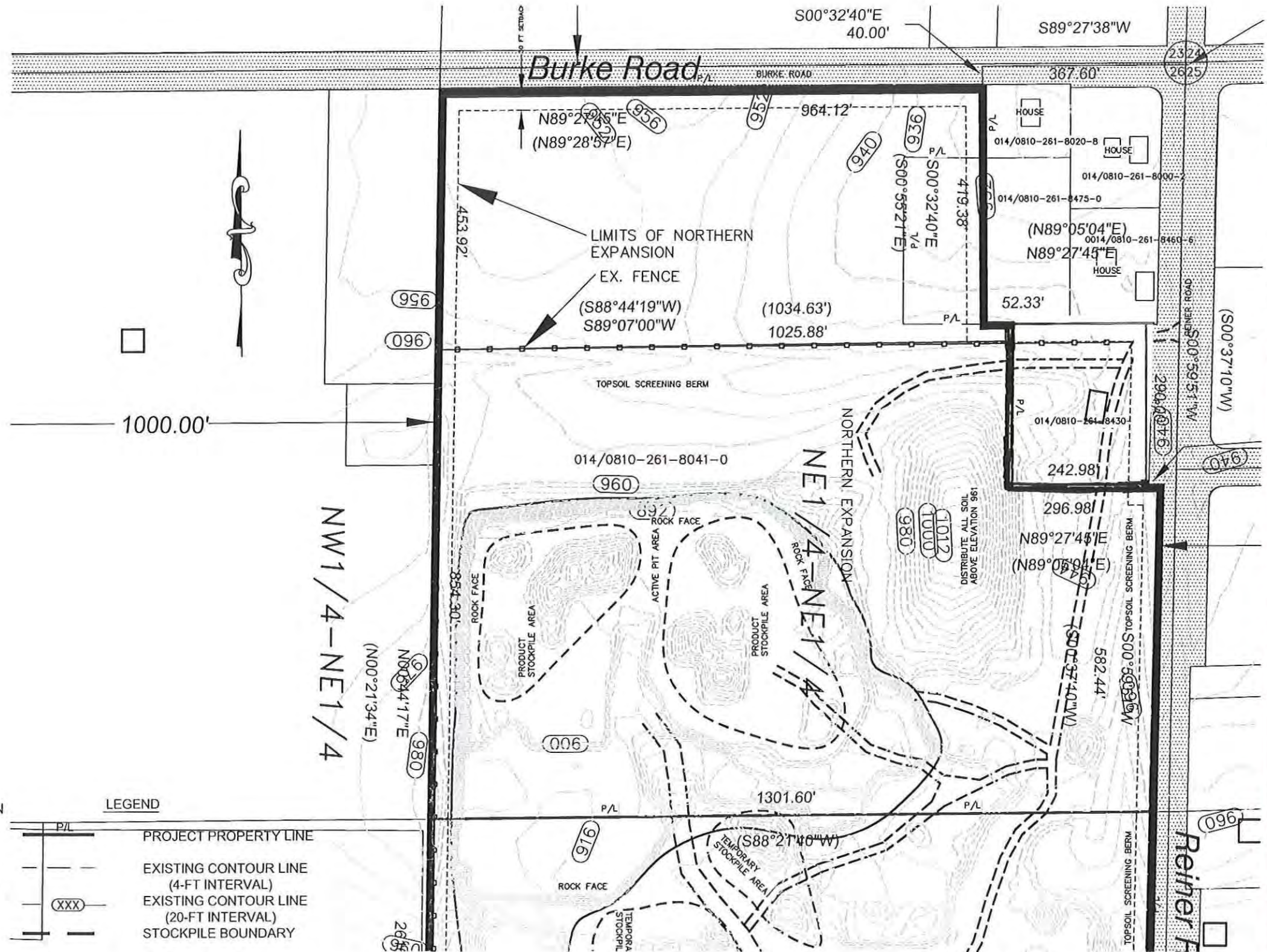


NOTES - GENERAL OPERATION

1. REMOVE TOPSOIL AND OVERBURDEN TO EXPOSE LIMESTONE BEDROCK. STOCKPILE TOPSOIL AND OVERBURDEN FOR USE DURING SITE RESTORATION.
2. BLAST LIMESTONE FOR EXTRACTION, INCLUDING EXCAVATION AND TRANSPORTING.
3. SLOPES SHOWN IN EXTRACTION AREA ARE FOR REFERENCE ONLY. ACTUAL SLOPES WITHIN EXTRACTION AREA WILL BE DETERMINED AT TIME OF EXTRACTION.
4. PERFORM SELECTIVE BLASTING TO MINIMIZE HIGHWALL AND MAINTAIN STABILITY TERRACES.
5. MAINTAIN APPROXIMATE 1 ACRE RUNOFF RETENTION BASIN AREA WITHIN THE EXTRACTION AREA.
6. EXTRACTION SIDE SLOPES 3:1 IN SOIL AREAS.
7. EXCESS ROCK AND OTHER CLEAN UNCONTAMINATED FILL MATERIAL WILL BE USED AS BACKFILL AGAINST VERTICAL SLOPES TO MINIMIZE VERTICAL DROP ALONG ROCK WALLS. LOCATION TO BE DETERMINED DURING OPERATION.
8. FINAL SUB GRADE ELEVATIONS WILL BE ESTABLISHED, ALLOWING REDISTRIBUTION OF SOIL MATERIAL FROM STOCKPILES, SEEDING AND MULCHING FOR FINAL RECLAMATION.
9. CONTOUR LABEL ORIENTATION INDICATES POSITIVE SLOPE. THE TOP OF THE MARKER IS ON THE UPHILL SIDE OF THE CONTOUR.

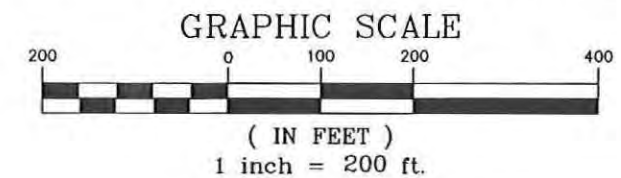
GENERAL NOTES

1. SITE BOUNDARY IS BASED ON MINERAL EXTRACTION MAP PREPARED BY BIRRENKOTT SURVEYING., INC. SUN PARIRIE, WI
2. CONTOURS ARE BASED UPON DIGITAL TERRAIN MAPPING INFORMATION FROM DANE COUNTY LAND INFORMATION OFFICE.



LEGEND

	PROJECT PROPERTY LINE
	EXISTING CONTOUR LINE (4-FT INTERVAL)
	EXISTING CONTOUR LINE (20-FT INTERVAL)
	STOCKPILE BOUNDARY



By	Revision	No.	Date	Project	0316-10486	Operator	MADISON CRUSHING & EXCAVATING CO., INC. 5185 REINER ROAD MADISON, WI 53718	Owner	MADISON CRUSHING & EXCAVATING CO., INC. 5185 REINER ROAD MADISON, WI 53718	Existing Northern Expansion Area	CUP SITE/OPERATION PLAN PART OF SEC. 26, T8N, R10E, TOWN OF BURKE, DANE CO., WI
				Date	DECEMBER 9, 2016	Job		Job			
				Scale	AS SHOWN	Checked By		Checked By			

BELKEN ENGINEERING, INC.  
1840 ESSEX DRIVE  
SUN PRAIRIE, WI 53590  
608-225-7180



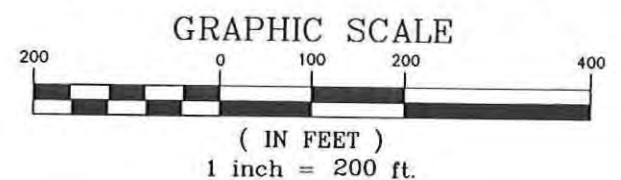
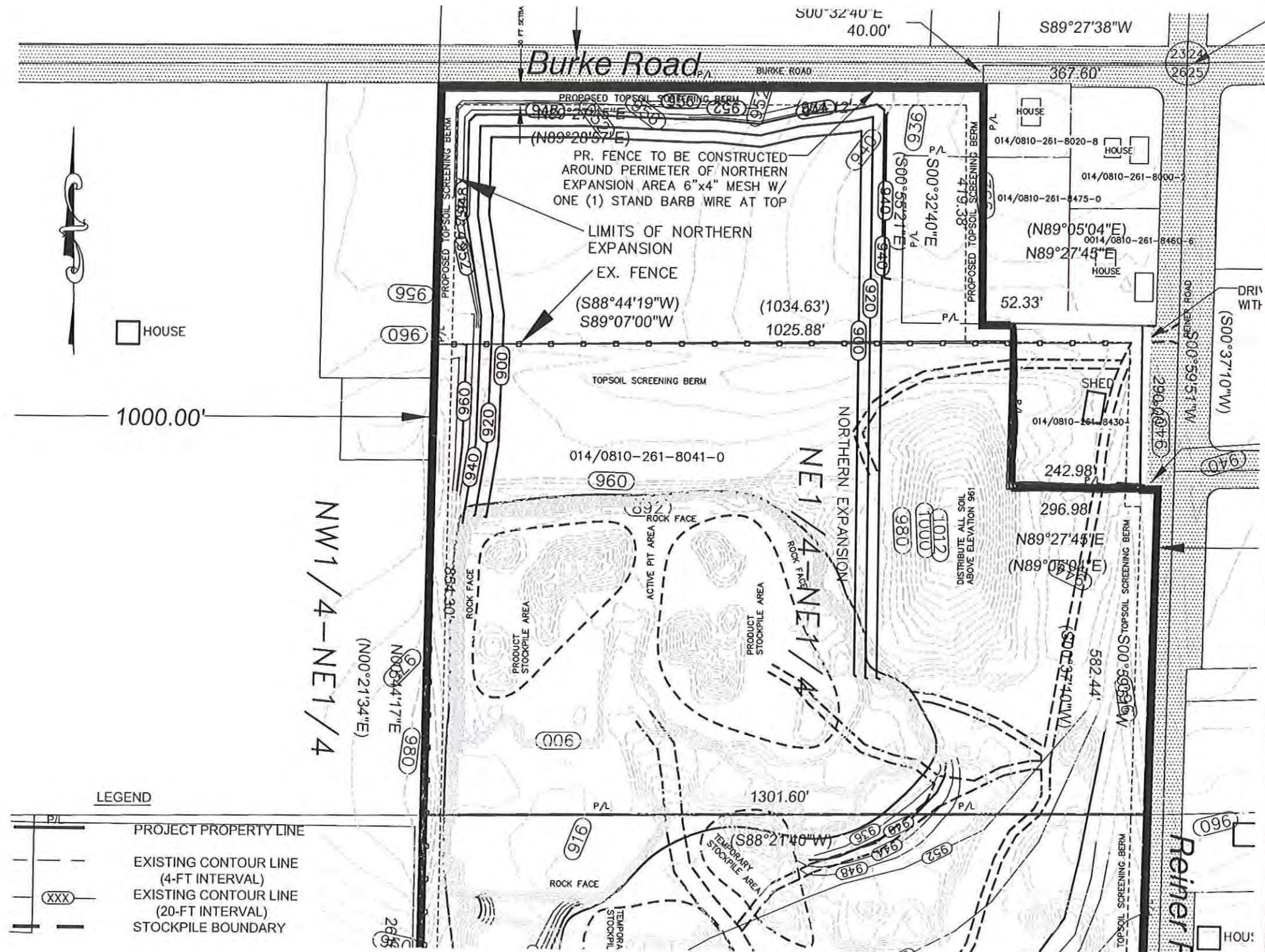
Dec 12, 2016, 7:55am, H:\2005\10389-MC&E New Quarry\dwg\CUP-D04.dwg

NOTES - GENERAL OPERATION

1. REMOVE TOPSOIL AND OVERBURDEN TO EXPOSE LIMESTONE BEDROCK. STOCKPILE TOPSOIL AND OVERBURDEN FOR USE DURING SITE RESTORATION.
2. BLAST LIMESTONE FOR EXTRACTION, INCLUDING EXCAVATION AND TRANSPORTING.
3. SLOPES SHOWN IN EXTRACTION AREA ARE FOR REFERENCE ONLY. ACTUAL SLOPES WITHIN EXTRACTION AREA WILL BE DETERMINED AT TIME OF EXTRACTION.
4. PERFORM SELECTIVE BLASTING TO MINIMIZE HIGHWALL AND MAINTAIN STABILITY TERRACES.
5. MAINTAIN APPROXIMATE 1 ACRE RUNOFF RETENTION BASIN WITHIN THE EXTRACTION AREA.
6. EXTRACTION SIDE SLOPES 3:1 IN SOIL AREAS.
7. EXCESS ROCK AND OTHER CLEAN UNCONTAMINATED FILL MATERIAL WILL BE USED AS BACKFILL AGAINST VERTICAL SLOPES TO MINIMIZE VERTICAL DROP ALONG ROCK WALLS. LOCATION TO BE DETERMINED DURING OPERATION.
8. FINAL SUB GRADE ELEVATIONS WILL BE ESTABLISHED, ALLOWING REDISTRIBUTION OF SOIL MATERIAL FROM STOCKPILES, SEEDING AND MULCHING FOR FINAL RECLAMATION.
9. CONTOUR LABEL ORIENTATION INDICATES POSITIVE SLOPE. THE TOP OF THE MARKER IS ON THE UPHILL SIDE OF THE CONTOUR.

GENERAL NOTES

1. SITE BOUNDARY IS ON BASED MINERAL EXTRACTION MAP PREPARED BY BIRRENKOTT SURVEYING., INC. SUN PRAIRIE, WI
2. CONTOURS ARE BASED UPON DIGITAL TERRAIN MAPPING INFORMATION FROM DANE COUNTY LAND INFORMATION OFFICE.



<b>OPERATOR</b> MADISON CRUSHING & EXCAVATING CO., INC. 5185 REINER ROAD MADISON, WI 53718		<b>OWNER</b> MADISON CRUSHING & EXCAVATING CO., INC. 5185 REINER ROAD MADISON, WI 53718		<b>PROJECT</b> 0316-10486 DATE DECEMBER 9, 2016 SCALE AS SHOWN	
<b>OPERATOR</b> MADISON CRUSHING & EXCAVATING CO., INC. 5185 REINER ROAD MADISON, WI 53718		<b>OWNER</b> MADISON CRUSHING & EXCAVATING CO., INC. 5185 REINER ROAD MADISON, WI 53718		<b>PROJECT</b> 0316-10486 DATE DECEMBER 9, 2016 SCALE AS SHOWN	
<b>OPERATOR</b> MADISON CRUSHING & EXCAVATING CO., INC. 5185 REINER ROAD MADISON, WI 53718		<b>OWNER</b> MADISON CRUSHING & EXCAVATING CO., INC. 5185 REINER ROAD MADISON, WI 53718		<b>PROJECT</b> 0316-10486 DATE DECEMBER 9, 2016 SCALE AS SHOWN	
<b>OPERATOR</b> MADISON CRUSHING & EXCAVATING CO., INC. 5185 REINER ROAD MADISON, WI 53718		<b>OWNER</b> MADISON CRUSHING & EXCAVATING CO., INC. 5185 REINER ROAD MADISON, WI 53718		<b>PROJECT</b> 0316-10486 DATE DECEMBER 9, 2016 SCALE AS SHOWN	
<b>OPERATOR</b> MADISON CRUSHING & EXCAVATING CO., INC. 5185 REINER ROAD MADISON, WI 53718		<b>OWNER</b> MADISON CRUSHING & EXCAVATING CO., INC. 5185 REINER ROAD MADISON, WI 53718		<b>PROJECT</b> 0316-10486 DATE DECEMBER 9, 2016 SCALE AS SHOWN	
<b>OPERATOR</b> MADISON CRUSHING & EXCAVATING CO., INC. 5185 REINER ROAD MADISON, WI 53718		<b>OWNER</b> MADISON CRUSHING & EXCAVATING CO., INC. 5185 REINER ROAD MADISON, WI 53718		<b>PROJECT</b> 0316-10486 DATE DECEMBER 9, 2016 SCALE AS SHOWN	
<b>OPERATOR</b> MADISON CRUSHING & EXCAVATING CO., INC. 5185 REINER ROAD MADISON, WI 53718		<b>OWNER</b> MADISON CRUSHING & EXCAVATING CO., INC. 5185 REINER ROAD MADISON, WI 53718		<b>PROJECT</b> 0316-10486 DATE DECEMBER 9, 2016 SCALE AS SHOWN	
<b>OPERATOR</b> MADISON CRUSHING & EXCAVATING CO., INC. 5185 REINER ROAD MADISON, WI 53718		<b>OWNER</b> MADISON CRUSHING & EXCAVATING CO., INC. 5185 REINER ROAD MADISON, WI 53718		<b>PROJECT</b> 0316-10486 DATE DECEMBER 9, 2016 SCALE AS SHOWN	
<b>OPERATOR</b> MADISON CRUSHING & EXCAVATING CO., INC. 5185 REINER ROAD MADISON, WI 53718		<b>OWNER</b> MADISON CRUSHING & EXCAVATING CO., INC. 5185 REINER ROAD MADISON, WI 53718		<b>PROJECT</b> 0316-10486 DATE DECEMBER 9, 2016 SCALE AS SHOWN	
<b>OPERATOR</b> MADISON CRUSHING & EXCAVATING CO., INC. 5185 REINER ROAD MADISON, WI 53718		<b>OWNER</b> MADISON CRUSHING & EXCAVATING CO., INC. 5185 REINER ROAD MADISON, WI 53718		<b>PROJECT</b> 0316-10486 DATE DECEMBER 9, 2016 SCALE AS SHOWN	
<b>OPERATOR</b> MADISON CRUSHING & EXCAVATING CO., INC. 5185 REINER ROAD MADISON, WI 53718		<b>OWNER</b> MADISON CRUSHING & EXCAVATING CO., INC. 5185 REINER ROAD MADISON, WI 53718		<b>PROJECT</b> 0316-10486 DATE DECEMBER 9, 2016 SCALE AS SHOWN	
<b>OPERATOR</b> MADISON CRUSHING & EXCAVATING CO., INC. 5185 REINER ROAD MADISON, WI 53718		<b>OWNER</b> MADISON CRUSHING & EXCAVATING CO., INC. 5185 REINER ROAD MADISON, WI 53718		<b>PROJECT</b> 0316-10486 DATE DECEMBER 9, 2016 SCALE AS SHOWN	
<b>OPERATOR</b> MADISON CRUSHING & EXCAVATING CO., INC. 5185 REINER ROAD MADISON, WI 53718		<b>OWNER</b> MADISON CRUSHING & EXCAVATING CO., INC. 5185 REINER ROAD MADISON, WI 53718		<b>PROJECT</b> 0316-10486 DATE DECEMBER 9, 2016 SCALE AS SHOWN	
<b>OPERATOR</b> MADISON CRUSHING & EXCAVATING CO., INC. 5185 REINER ROAD MADISON, WI 53718		<b>OWNER</b> MADISON CRUSHING & EXCAVATING CO., INC. 5185 REINER ROAD MADISON, WI 53718		<b>PROJECT</b> 0316-10486 DATE DECEMBER 9, 2016 SCALE AS SHOWN	
<b>OPERATOR</b> MADISON CRUSHING & EXCAVATING CO., INC. 5185 REINER ROAD MADISON, WI 53718		<b>OWNER</b> MADISON CRUSHING & EXCAVATING CO., INC. 5185 REINER ROAD MADISON, WI 53718		<b>PROJECT</b> 0316-10486 DATE DECEMBER 9, 2016 SCALE AS SHOWN	
<b>OPERATOR</b> MADISON CRUSHING & EXCAVATING CO., INC. 5185 REINER ROAD MADISON, WI 53718		<b>OWNER</b> MADISON CRUSHING & EXCAVATING CO., INC. 5185 REINER ROAD MADISON, WI 53718		<b>PROJECT</b> 0316-10486 DATE DECEMBER 9, 2016 SCALE AS SHOWN	
<b>OPERATOR</b> MADISON CRUSHING & EXCAVATING CO., INC. 5185 REINER ROAD MADISON, WI 53718		<b>OWNER</b> MADISON CRUSHING & EXCAVATING CO., INC. 5185 REINER ROAD MADISON, WI 53718		<b>PROJECT</b> 0316-10486 DATE DECEMBER 9, 2016 SCALE AS SHOWN	
<b>OPERATOR</b> MADISON CRUSHING & EXCAVATING CO., INC. 5185 REINER ROAD MADISON, WI 53718		<b>OWNER</b> MADISON CRUSHING & EXCAVATING CO., INC. 5185 REINER ROAD MADISON, WI 53718		<b>PROJECT</b> 0316-10486 DATE DECEMBER 9, 2016 SCALE AS SHOWN	
<b>OPERATOR</b> MADISON CRUSHING & EXCAVATING CO., INC. 5185 REINER ROAD MADISON, WI 53718		<b>OWNER</b> MADISON CRUSHING & EXCAVATING CO., INC. 5185 REINER ROAD MADISON, WI 53718		<b>PROJECT</b> 0316-10486 DATE DECEMBER 9, 2016 SCALE AS SHOWN	
<b>OPERATOR</b> MADISON CRUSHING & EXCAVATING CO., INC. 5185 REINER ROAD MADISON, WI 53718		<b>OWNER</b> MADISON CRUSHING & EXCAVATING CO., INC. 5185 REINER ROAD MADISON, WI 53718		<b>PROJECT</b> 0316-10486 DATE DECEMBER 9, 2016 SCALE AS SHOWN	
<b>OPERATOR</b> MADISON CRUSHING & EXCAVATING CO., INC. 5185 REINER ROAD MADISON, WI 53718		<b>OWNER</b> MADISON CRUSHING & EXCAVATING CO., INC. 5185 REINER ROAD MADISON, WI 53718		<b>PROJECT</b> 0316-10486 DATE DECEMBER 9, 2016 SCALE AS SHOWN	
<b>OPERATOR</b> MADISON CRUSHING & EXCAVATING CO., INC. 5185 REINER ROAD MADISON, WI 53718		<b>OWNER</b> MADISON CRUSHING & EXCAVATING CO., INC. 5185 REINER ROAD MADISON, WI 53718		<b>PROJECT</b> 0316-10486 DATE DECEMBER 9, 2016 SCALE AS SHOWN	
<b>OPERATOR</b> MADISON CRUSHING & EXCAVATING CO., INC. 5185 REINER ROAD MADISON, WI 53718		<b>OWNER</b> MADISON CRUSHING & EXCAVATING CO., INC. 5185 REINER ROAD MADISON, WI 53718		<b>PROJECT</b> 0316-10486 DATE DECEMBER 9, 2016 SCALE AS SHOWN	
<b>OPERATOR</b> MADISON CRUSHING & EXCAVATING CO., INC. 5185 REINER ROAD MADISON, WI 53718		<b>OWNER</b> MADISON CRUSHING & EXCAVATING CO., INC. 5185 REINER ROAD MADISON, WI 53718		<b>PROJECT</b> 0316-10486 DATE DECEMBER 9, 2016 SCALE AS SHOWN	
<b>OPERATOR</b> MADISON CRUSHING & EXCAVATING CO., INC. 5185 REINER ROAD MADISON, WI 53718		<b>OWNER</b> MADISON CRUSHING & EXCAVATING CO., INC. 5185 REINER ROAD MADISON, WI 53718		<b>PROJECT</b> 0316-10486 DATE DECEMBER 9, 2016 SCALE AS SHOWN	
<b>OPERATOR</b> MADISON CRUSHING & EXCAVATING CO., INC. 5185 REINER ROAD MADISON, WI 53718		<b>OWNER</b> MADISON CRUSHING & EXCAVATING CO., INC. 5185 REINER ROAD MADISON, WI 53718		<b>PROJECT</b> 0316-10486 DATE DECEMBER 9, 2016 SCALE AS SHOWN	
<b>OPERATOR</b> MADISON CRUSHING & EXCAVATING CO., INC. 5185 REINER ROAD MADISON, WI 53718		<b>OWNER</b> MADISON CRUSHING & EXCAVATING CO., INC. 5185 REINER ROAD MADISON, WI 53718		<b>PROJECT</b> 0316-10486 DATE DECEMBER 9, 2016 SCALE AS SHOWN	
<b>OPERATOR</b> MADISON CRUSHING & EXCAVATING CO., INC. 5185 REINER ROAD MADISON, WI 53718		<b>OWNER</b> MADISON CRUSHING & EXCAVATING CO., INC. 5185 REINER ROAD MADISON, WI 53718		<b>PROJECT</b> 0316-10486 DATE DECEMBER 9, 2016 SCALE AS SHOWN	
<b>OPERATOR</b> MADISON CRUSHING & EXCAVATING CO., INC. 5185 REINER ROAD MADISON, WI 53718		<b>OWNER</b> MADISON CRUSHING & EXCAVATING CO., INC. 5185 REINER ROAD MADISON, WI 53718		<b>PROJECT</b> 0316-10486 DATE DECEMBER 9, 2016 SCALE AS SHOWN	
<b>OPERATOR</b> MADISON CRUSHING & EXCAVATING CO., INC. 5185 REINER ROAD MADISON, WI 53718		<b>OWNER</b> MADISON CRUSHING & EXCAVATING CO., INC. 5185 REINER ROAD MADISON, WI 53718		<b>PROJECT</b> 0316-10486 DATE DECEMBER 9, 2016 SCALE AS SHOWN	
<b>OPERATOR</b> MADISON CRUSHING & EXCAVATING CO., INC. 5185 REINER ROAD MADISON, WI 53718		<b>OWNER</b> MADISON CRUSHING & EXCAVATING CO., INC. 5185 REINER ROAD MADISON, WI 53718		<b>PROJECT</b> 0316-10486 DATE DECEMBER 9, 2016 SCALE AS SHOWN	
<b>OPERATOR</b> MADISON CRUSHING & EXCAVATING CO., INC. 5185 REINER ROAD MADISON, WI 53718		<b>OWNER</b> MADISON CRUSHING & EXCAVATING CO., INC. 5185 REINER ROAD MADISON, WI 53718		<b>PROJECT</b> 0316-10486 DATE DECEMBER 9, 2016 SCALE AS SHOWN	
<b>OPERATOR</b> MADISON CRUSHING & EXCAVATING CO., INC. 5185 REINER ROAD MADISON, WI 53718		<b>OWNER</b> MADISON CRUSHING & EXCAVATING CO., INC. 5185 REINER ROAD MADISON, WI 53718		<b>PROJECT</b> 0316-10486 DATE DECEMBER 9, 2016 SCALE AS SHOWN	
<b>OPERATOR</b> MADISON CRUSHING & EXCAVATING CO., INC. 5185 REINER ROAD MADISON, WI 53718		<b>OWNER</b> MADISON CRUSHING & EXCAVATING CO., INC. 5185 REINER ROAD MADISON, WI 53718		<b>PROJECT</b> 0316-10486 DATE DECEMBER 9, 2016 SCALE AS SHOWN	
<b>OPERATOR</b> MADISON CRUSHING & EXCAVATING CO., INC. 5185 REINER ROAD MADISON, WI 53718		<b>OWNER</b> MADISON CRUSHING & EXCAVATING CO., INC. 5185 REINER ROAD MADISON, WI 53718		<b>PROJECT</b> 0316-10486 DATE DECEMBER 9, 2016 SCALE AS SHOWN	
<b>OPERATOR</b> MADISON CRUSHING & EXCAVATING CO., INC. 5185 REINER ROAD MADISON, WI 53718		<b>OWNER</b> MADISON CRUSHING & EXCAVATING CO., INC. 5185 REINER ROAD MADISON, WI 53718		<b>PROJECT</b> 0316-10486 DATE DECEMBER 9, 2016 SCALE AS SHOWN	
<b>OPERATOR</b> MADISON CRUSHING & EXCAVATING CO., INC. 5185 REINER ROAD MADISON, WI 53718		<b>OWNER</b> MADISON CRUSHING & EXCAVATING CO., INC. 5185 REINER ROAD MADISON, WI 53718		<b>PROJECT</b> 0316-10486 DATE DECEMBER 9, 2016 SCALE AS SHOWN	
<b>OPERATOR</b> MADISON CRUSHING & EXCAVATING CO., INC. 5185 REINER ROAD MADISON, WI 53718		<b>OWNER</b> MADISON CRUSHING & EXCAVATING CO., INC. 5185 REINER ROAD MADISON, WI 53718		<b>PROJECT</b> 0316-10486 DATE DECEMBER 9, 2016 SCALE AS SHOWN	
<b>OPERATOR</b> MADISON CRUSHING & EXCAVATING CO., INC. 5185 REINER ROAD MADISON, WI 53718		<b>OWNER</b> MADISON CRUSHING & EXCAVATING CO., INC. 5185 REINER ROAD MADISON, WI 53718		<b>PROJECT</b> 0316-10486 DATE DECEMBER 9, 2016 SCALE AS SHOWN	
<b>OPERATOR</b> MADISON CRUSHING & EXCAVATING CO., INC. 5185 REINER ROAD MADISON, WI 53718		<b>OWNER</b> MADISON CRUSHING & EXCAVATING CO., INC. 5185 REINER ROAD MADISON, WI 53718		<b>PROJECT</b> 0316-10486 DATE DECEMBER 9, 2016 SCALE AS SHOWN	
<b>OPERATOR</b> MADISON CRUSHING & EXCAVATING CO., INC. 5185 REINER ROAD MADISON, WI 53718		<b>OWNER</b> MADISON CRUSHING & EXCAVATING CO., INC. 5185 REINER ROAD MADISON, WI 53718		<b>PROJECT</b> 0316-10486 DATE DECEMBER 9, 2016 SCALE AS SHOWN	
<b>OPERATOR</b> MADISON CRUSHING & EXCAVATING CO., INC. 5185 REINER ROAD MADISON, WI 53718		<b>OWNER</b> MADISON CRUSHING & EXCAVATING CO., INC. 5185 REINER ROAD MADISON, WI 53718		<b>PROJECT</b> 0316-10486 DATE DECEMBER 9, 2016 SCALE AS SHOWN	
<b>OPERATOR</b> MADISON CRUSHING & EXCAVATING CO., INC. 5185 REINER ROAD MADISON, WI 53718		<b>OWNER</b> MADISON CRUSHING & EXCAVATING CO., INC. 5185 REINER ROAD MADISON, WI 53718		<b>PROJECT</b> 0316-10486 DATE DECEMBER 9, 2016 SCALE AS SHOWN	
<b>OPERATOR</b> MADISON CRUSHING & EXCAVATING CO., INC. 5185 REINER ROAD MADISON, WI 53718		<b>OWNER</b> MADISON CRUSHING & EXCAVATING CO., INC. 5185 REINER ROAD MADISON, WI 53718		<b>PROJECT</b> 0316-10486 DATE DECEMBER 9, 2016 SCALE AS SHOWN	
<b>OPERATOR</b> MADISON CRUSHING & EXCAVATING CO., INC. 5185 REINER ROAD MADISON, WI 53718		<b>OWNER</b> MADISON CRUSHING & EXCAVATING CO., INC. 5185 REINER ROAD MADISON, WI 53718		<b>PROJECT</b> 0316-10486 DATE DECEMBER 9, 2016 SCALE AS SHOWN	
<b>OPERATOR</b> MADISON CRUSHING & EXCAVATING CO., INC. 5185 REINER ROAD MADISON, WI 53718		<b>OWNER</b> MADISON CRUSHING & EXCAVATING CO., INC. 5185 REINER ROAD MADISON, WI 53718		<b>PROJECT</b> 0316-10486 DATE DECEMBER 9, 2016 SCALE AS SHOWN	
<b>OPERATOR</b> MADISON CRUSHING & EXCAVATING CO., INC. 5185 REINER ROAD MADISON, WI 53718		<b>OWNER</b> MADISON CRUSHING & EXCAVATING CO., INC. 5185 REINER ROAD MADISON, WI 53718		<b>PROJECT</b> 0316-10486 DATE DECEMBER 9, 2016 SCALE AS SHOWN	
<b>OPERATOR</b> MADISON CRUSHING & EXCAVATING CO., INC. 5185 REINER ROAD MADISON, WI 53718		<b>OWNER</b> MADISON CRUSHING & EXCAVATING CO., INC. 5185 REINER ROAD MADISON, WI 53718		<b>PROJECT</b> 0316-10486 DATE DECEMBER 9, 2016 SCALE AS SHOWN	
<b>OPERATOR</b> MADISON CRUSHING & EXCAVATING CO., INC. 5185 REINER ROAD MADISON, WI 53718		<b>OWNER</b> MADISON CRUSHING & EXCAVATING CO., INC. 5185 REINER ROAD MADISON, WI 53718		<b>PROJECT</b> 0316-10486 DATE DECEMBER 9, 2016 SCALE AS SHOWN	
<b>OPERATOR</b> MADISON CRUSHING & EXCAVATING CO., INC. 5185 REINER ROAD MADISON, WI 53718		<b>OWNER</b> MADISON CRUSHING & EXCAVATING CO., INC. 5185 REINER ROAD MADISON, WI 53718		<b>PROJECT</b> 0316-10486 DATE DECEMBER 9, 2016 SCALE AS SHOWN	
<b>OPERATOR</b> MADISON CRUSHING & EXCAVATING CO., INC. 5185 REINER ROAD MADISON, WI 53718		<b>OWNER</b> MADISON CRUSHING & EXCAVATING CO., INC. 5185 REINER ROAD MADISON, WI 53718		<b>PROJECT</b> 0316-10486 DATE DECEMBER 9, 2016 SCALE AS SHOWN	
<b>OPERATOR</b> MADISON CRUSHING & EXCAVATING CO., INC. 5185 REINER ROAD MADISON, WI 53718		<b>OWNER</b> MADISON CRUSHING & EXCAVATING CO., INC. 5185 REINER ROAD MADISON, WI 53718		<b>PROJECT</b> 0316-10486 DATE DECEMBER 9, 2016 SCALE AS SHOWN	
<b>OPERATOR</b> MADISON CRUSHING & EXCAVATING CO., INC. 5185 REINER ROAD MADISON, WI 53718		<b>OWNER</b> MADISON CRUSHING & EXCAVATING CO., INC. 5185 REINER ROAD MADISON, WI 53718		<b>PROJECT</b> 0316-10486 DATE DECEMBER 9, 2016 SCALE AS SHOWN	
<b>OPERATOR</b> MADISON CRUSHING & EXCAVATING CO., INC. 5185 REINER ROAD MADISON, WI 53718		<b>OWNER</b> MADISON CRUSHING & EXCAVATING CO., INC. 5185 REINER ROAD MADISON, WI 53718		<b>PROJECT</b> 0316-10486 DATE DECEMBER 9, 2016 SCALE AS SHOWN	
<b>OPERATOR</b> MADISON CRUSHING & EXCAVATING CO., INC. 5185 REINER ROAD MADISON, WI 53718		<b>OWNER</b> MADISON CRUSHING & EXCAVATING CO., INC. 5185 REINER ROAD MADISON, WI 53718		<b>PROJECT</b> 0316-10486 DATE DECEMBER 9, 2016 SCALE AS SHOWN	
<b>OPERATOR</b> MADISON CRUSHING & EXCAVATING CO., INC. 5185 REINER ROAD MADISON, WI 53718		<b>OWNER</b> MAD			



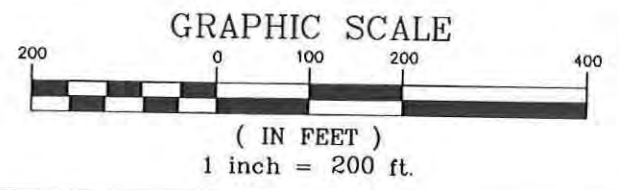
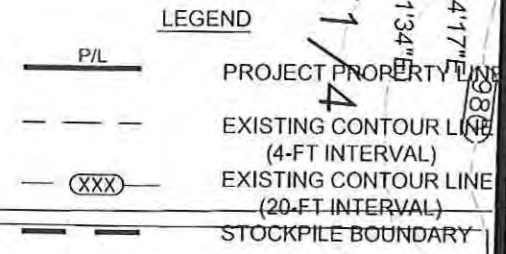
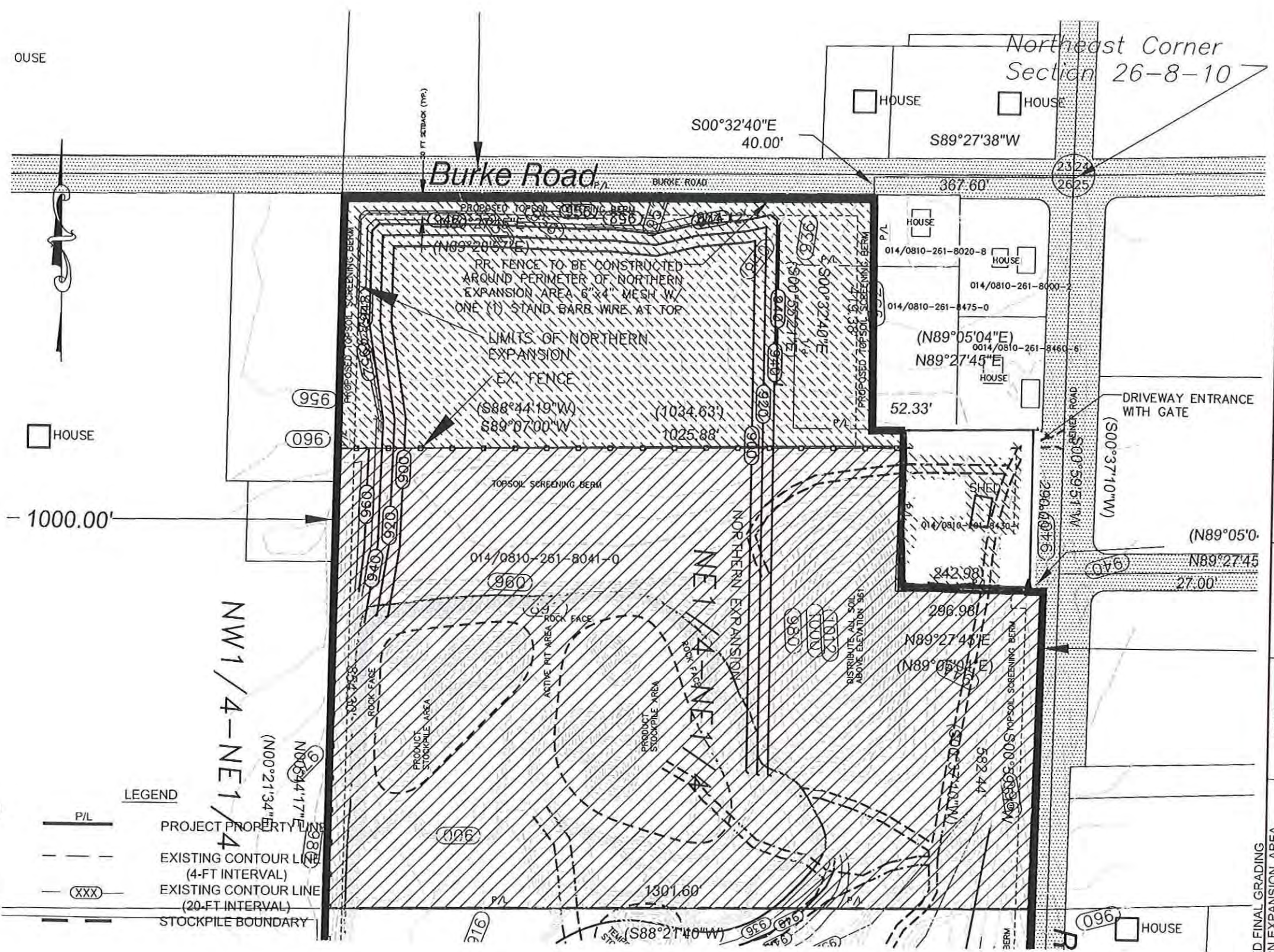
Dec 12, 2016, 7:58am, H:\2005\10389-MC&E New Quarry\dwg\CUP-D05.dwg

NOTES - GENERAL OPERATION

1. STOCKPILED TOPSOIL AND OVERBURDEN TO BE USE FOR FINAL SITE RESTORATION.
2. SLOPES SHOWN IN PIT AREA ARE FOR REFERENCE ONLY. ACTUAL SLOPES WITHIN PIT AREA WILL BE DETERMINED AT TIME OF RESTORATION.
3. MAINTAIN DRAINAGE TO RUNOFF RETENTION BASIN AREA WITHIN PIT AREA.
4. EXTRACTION SIDE SLOPES 3:1 IN SOIL AREAS.
5. EXCESS ROCK AND OTHER CLEAN UNCONTAMINATED FILL MATERIAL WILL BE USED AS BACKFILL AGAINST VERTICAL SLOPES TO MINIMIZE VERTICAL DROP ALONG ROCK WALLS. LOCATION TO BE DETERMINED DURING OPERATION.
6. FINAL SUB GRADE ELEVATIONS WILL BE ESTABLISHED, ALLOWING REDISTRIBUTION OF SOIL MATERIAL FROM STOCKPILES, SEEDING AND MULCHING FOR FINAL RECLAMATION.
7. CONTOUR LABEL ORIENTATION INDICATES POSITIVE SLOPE. THE TOP OF THE MARKER

GENERAL NOTES

1. SITE BOUNDARY IS BASED ON MINERAL EXTRACTION BOUNDARY MAP PREPARED BY BIRRENKOTT SURVEYING, INC. SUN PRAIRIE, WI
2. CONTOURS ARE BASED UPON DIGITAL TERRAIN MAPPING INFORMATION FROM DANE COUNTY LAND INFORMATION OFFICE.



PROJECT		0316-10486	
DATE	NOVEMBER 9, 2016	DATE	AS SHOWN
OWNER	MADISON CRUSHING & EXCAVATING CO., INC. 5185 REINER ROAD MADISON, WI 53718	OPERATOR	MADISON CRUSHING & EXCAVATING CO., INC. 5185 REINER ROAD MADISON, WI 53718
BY		REVISION	
BELKEN ENGINEERING, INC. 1840 ESSEX DRIVE SUN PRAIRIE, WI 53590 608-225-7180			

PROPOSED FINAL GRADING  
 NORTHERN EXPANSION AREA  
 CUP SITE/OPERATION PLAN  
 PART OF SEC. 26, T8N, R10E, TOWN OF BURKE, DANE CO., WI

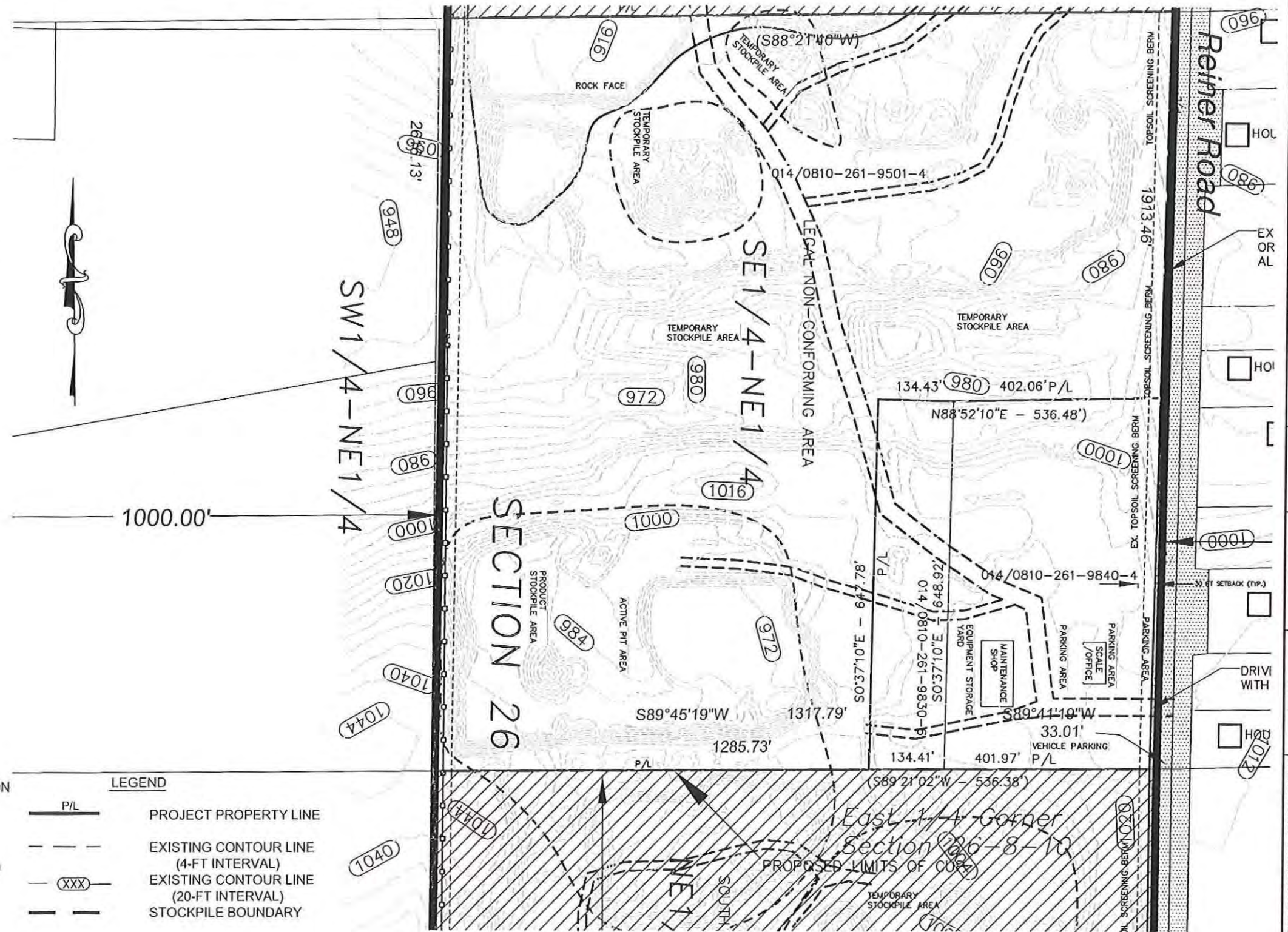


NOTES - GENERAL OPERATION

1. SLOPES SHOWN IN EXTRACTION AREA ARE FOR REFERENCE ONLY. ACTUAL SLOPES WITHIN EXTRACTION AREA WILL BE DETERMINED AT TIME OF EXTRACTION.
2. MAINTAIN APPROXIMATE 1 ACRE RUNOFF RETENTION BASIN AREA WITHIN THE EXTRACTION AREA.
3. EXTRACTION SIDE SLOPES 3:1 IN SOIL AREAS.
4. EXCESS ROCK AND OTHER CLEAN UNCONTAMINATED FILL MATERIAL WILL BE USED AS BACKFILL AGAINST VERTICAL SLOPES TO MINIMIZE VERTICAL DROP ALONG ROCK WALLS. LOCATION TO BE DETERMINED DURING OPERATION.
5. CONTOUR LABEL ORIENTATION INDICATES POSITIVE SLOPE. THE TOP OF THE MARKER IS ON THE UPHILL SIDE OF THE CONTOUR.

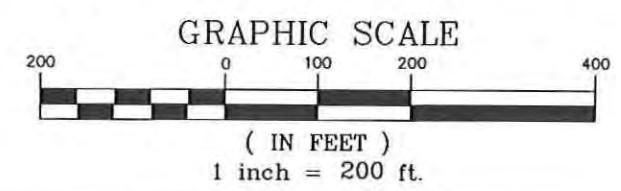
GENERAL NOTES

1. SITE BOUNDARY IS BASED ON MINERAL EXTRACTION BOUNDARY MAP PREPARED BY BIRRENKOTT SURVEYING, INC., SUN PRAIRIE, WI
2. CONTOURS ARE BASED UPON DIGITAL TERRAIN MAPPING INFORMATION FROM DANE COUNTY LAND INFORMATION OFFICE.



LEGEND

	PROJECT PROPERTY LINE
	EXISTING CONTOUR LINE (4-FT INTERVAL)
	EXISTING CONTOUR LINE (20-FT INTERVAL)
	STOCKPILE BOUNDARY



By	Revision	No.	Date	Project	0316-10486	Drawn by	JDB	Date	DECEMBER 9, 2016	Scale	AS SHOWN
BELKEN ENGINEERING, INC. 1840 ESSEX DRIVE SUN PRAIRIE, WI 53590 608-225-7180											
OPERATOR MADISON CRUSHING & EXCAVATING CO., INC. 5185 REINER ROAD MADISON, WI 53718											
OWNER MADISON CRUSHING & EXCAVATING CO., INC. 5185 REINER ROAD MADISON, WI 53718											
EXISTING NON-CONFORMING PIT AREA CUP SITE/OPERATION PLAN PART OF SEC. 26, T8N, R10E, TOWN OF BURKE, DANE CO., WI											
Sheet 6 of 10											



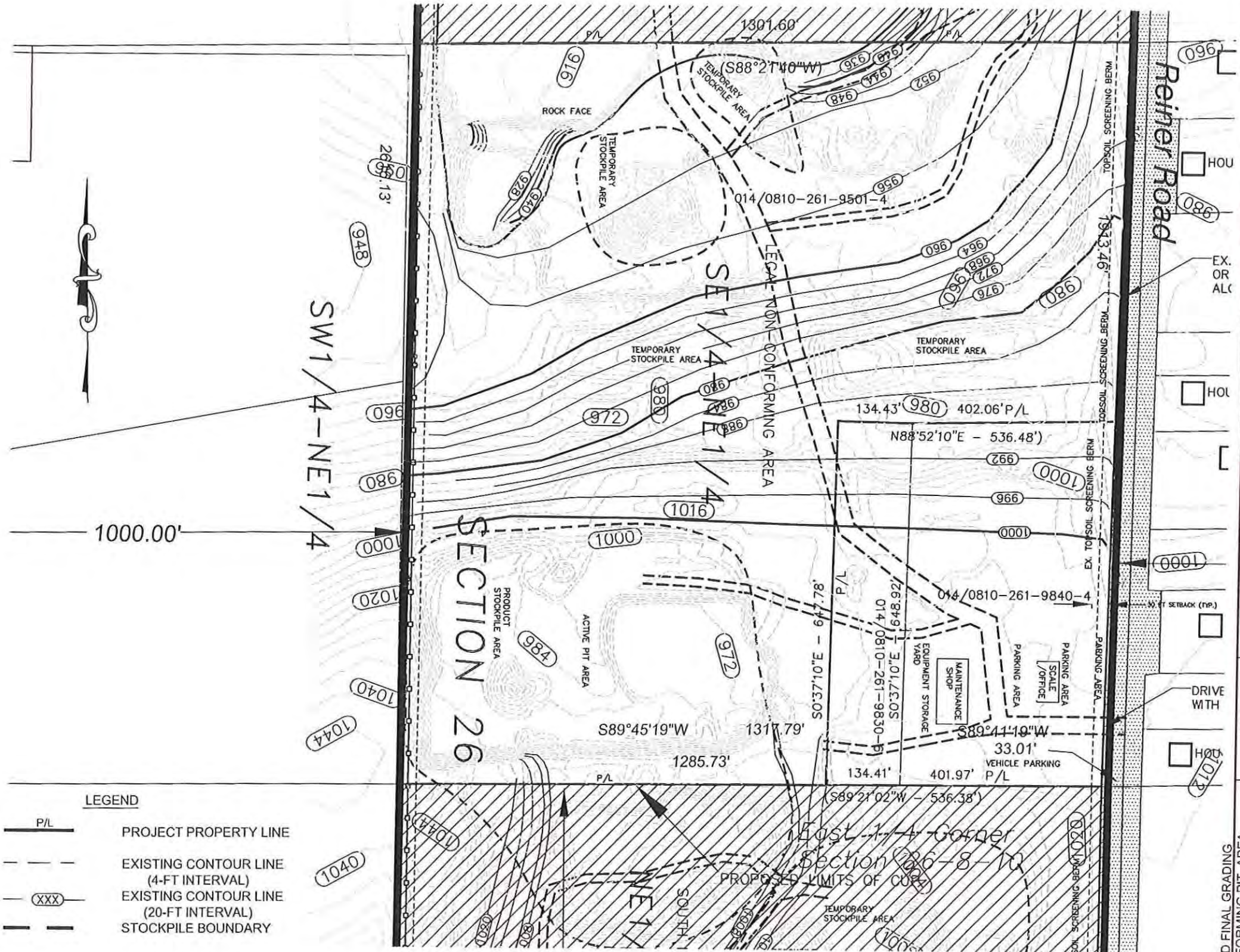
NOTES - GENERAL OPERATION

1. STOCKPILED TOPSOIL AND OVERBURDEN TO BE USE FOR FINAL SITE RESTORATION.
2. SLOPES SHOWN IN PIT AREA ARE FOR REFERENCE ONLY. ACTUAL SLOPES WITHIN PIT AREA WILL BE DETERMINED AT TIME OF RESTORATION.
3. MAINTAIN DRAINAGE TO RUNOFF RETENTION BASIN AREA WITHIN PIT AREA.
4. EXTRACTION SIDE SLOPES 3:1 IN SOIL AREAS.
5. EXCESS ROCK AND OTHER CLEAN UNCONTAMINATED FILL MATERIAL WILL BE USED AS BACKFILL AGAINST VERTICAL SLOPES TO MINIMIZE VERTICAL DROP ALONG ROCK WALLS. LOCATION TO BE DETERMINED DURING OPERATION.
6. FINAL SUB GRADE ELEVATIONS WILL BE ESTABLISHED, ALLOWING REDISTRIBUTION OF SOIL MATERIAL FROM STOCKPILES, SEEDING AND MULCHING FOR FINAL RECLAMATION.
7. CONTOUR LABEL ORIENTATION INDICATES POSITIVE SLOPE. THE TOP OF THE MARKER

GENERAL NOTES

1. SITE BOUNDARY IS BASED ON MINERAL EXTRACTION BOUNDARY MAP PREPARED BY BIRRENKOTT SURVEYING, INC. SUN PRAIRIE, WI
2. CONTOURS ARE BASED UPON DIGITAL TERRAIN MAPPING INFORMATION FROM DANE COUNTY LAND INFORMATION OFFICE.

LEGEND	
	PROJECT PROPERTY LINE
	EXISTING CONTOUR LINE (4-FT INTERVAL)
	EXISTING CONTOUR LINE (20-FT INTERVAL)
	STOCKPILE BOUNDARY



<b>OPERATOR</b> MADISON CRUSHING & EXCAVATING CO., INC. 5185 REINER ROAD MADISON, WI 53718		<b>OWNER</b> MADISON CRUSHING & EXCAVATING CO., INC. 5185 REINER ROAD MADISON, WI 53718	
<b>PROJECT</b> 0316-10486 DATE DECEMBER 9, 2016 SCALE AS SHOWN		<b>JOB</b> DRAWN BY: [blank] CHECKED BY: [blank]	
<b>BY</b> BELKEN ENGINEERING, INC. 1840 ESSEX DRIVE SUN PRAIRIE, WI 53590 608-225-7180		<b>REVISION</b> [blank]	
<b>PROPOSED FINAL GRADING NON-CONFORMING PIT AREA</b> CUP SITE/OPERATION PLAN PART OF SEC. 26, T8N, R10E, TOWN OF BURKE, DANE CO., WI			
Sheet 7 of 10			



Dec 12, 2016, 8:15am, H:\2005\10389-MC&E New Quarry\dwg\CUP-D08.dwg

NOTES - GENERAL OPERATION

1. SLOPES SHOWN IN EXTRACTION AREA ARE FOR REFERENCE ONLY. ACTUAL SLOPES WITHIN EXTRACTION AREA WILL BE DETERMINED AT TIME OF EXTRACTION.
2. MAINTAIN APPROXIMATE 1 ACRE RUNOFF RETENTION BASIN AREA WITHIN THE EXTRACTION AREA.
3. EXTRACTION SIDE SLOPES 3:1 IN SOIL AREAS.
4. EXCESS ROCK AND OTHER CLEAN UNCONTAMINATED FILL MATERIAL WILL BE USED AS BACKFILL AGAINST VERTICAL SLOPES TO MINIMIZE VERTICAL DROP ALONG ROCK WALLS. LOCATION TO BE DETERMINED DURING OPERATION.
5. CONTOUR LABEL ORIENTATION INDICATES POSITIVE SLOPE. THE TOP OF THE MARKER IS ON THE UPHILL SIDE OF THE CONTOUR.

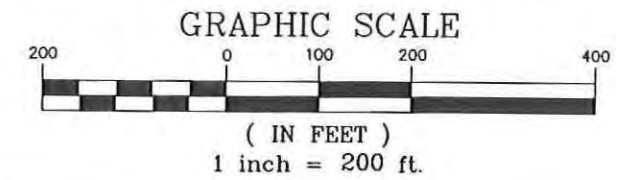
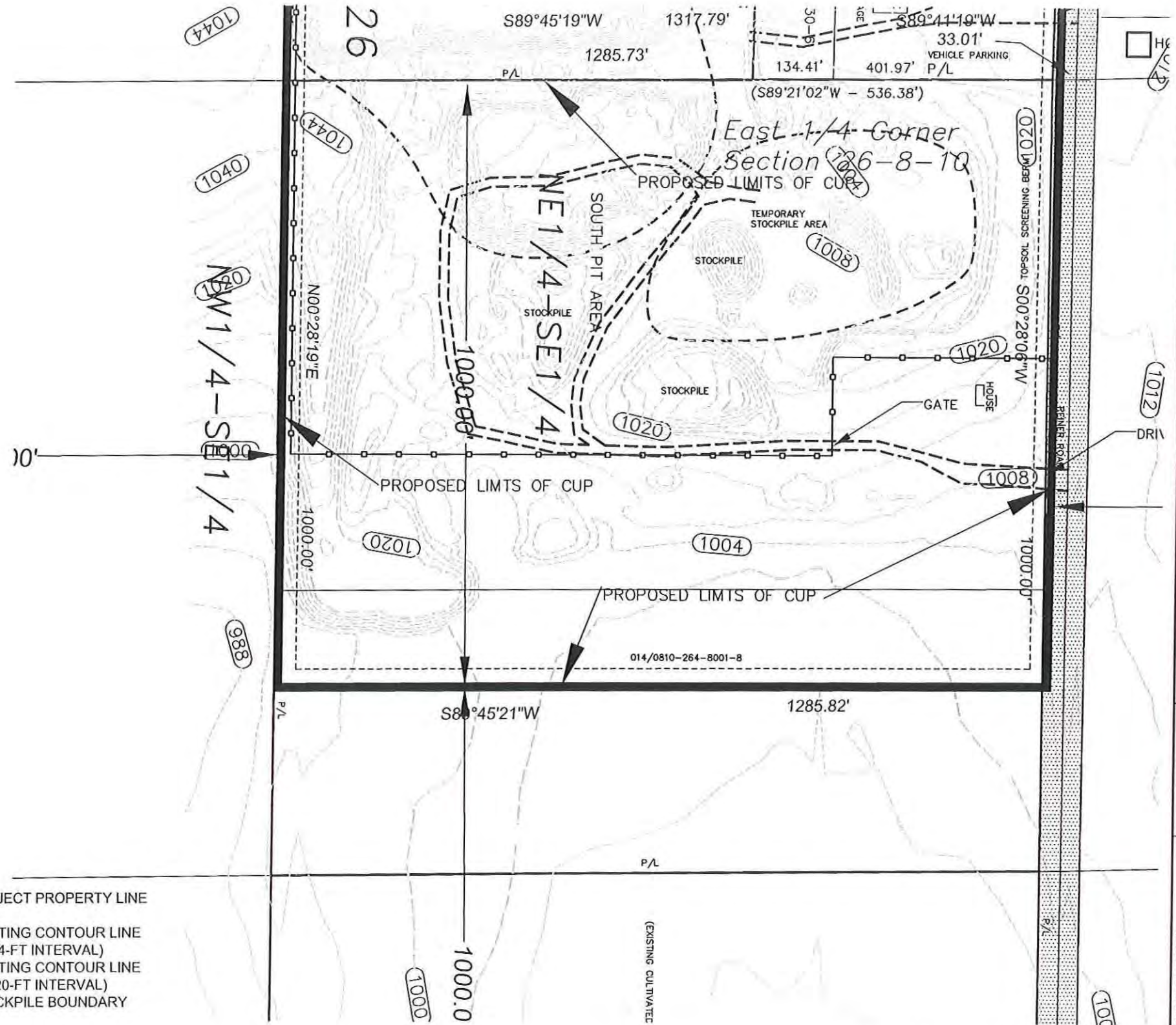


GENERAL NOTES

1. SITE BOUNDARY IS BASED ON MINERAL EXTRACTION BOUNDARY MAP PREPARED BY BIRRENKOTT SURVEYING, INC., SUN PRAIRIE, WI
2. CONTOURS ARE BASED UPON DIGITAL TERRAIN MAPPING INFORMATION FROM DANE COUNTY LAND INFORMATION OFFICE.

LEGEND

- PROJECT PROPERTY LINE
- EXISTING CONTOUR LINE (4-FT INTERVAL)
- EXISTING CONTOUR LINE (20-FT INTERVAL)
- STOCKPILE BOUNDARY



BELKEN ENGINEERING, INC. 1840 ESSEX DRIVE SUN PRAIRIE, WI 53590 608-225-7180	
By	
Revision	
Date	
No.	
Project 0316-10485	
Date DECEMBER 9, 2016	
Scale AS SHOWN	
OPERATOR	MADISON CRUSHING & EXCAVATING CO. INC. 5185 REINER ROAD MADISON, WI 53718
OWNER	MADISON CRUSHING & EXCAVATING CO. INC. 5185 REINER ROAD MADISON, WI 53718
EXISTING SOUTH PIT AREA	
CUP SITE/OPERATION PLAN	
PART OF SEC. 26, T8N, R10E, TOWN OF BURKE, DANE CO., WI	
Sheet	8 of 10



Dec 12, 2016, 8:16am, H:\2005\10389-MC&E New Quarry\dwg\CUP-D09.dwg

NOTES - GENERAL OPERATION

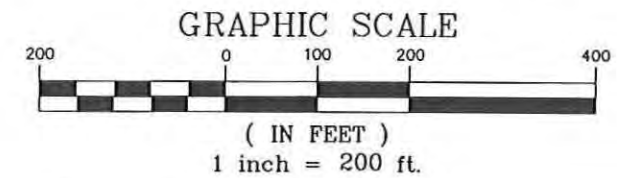
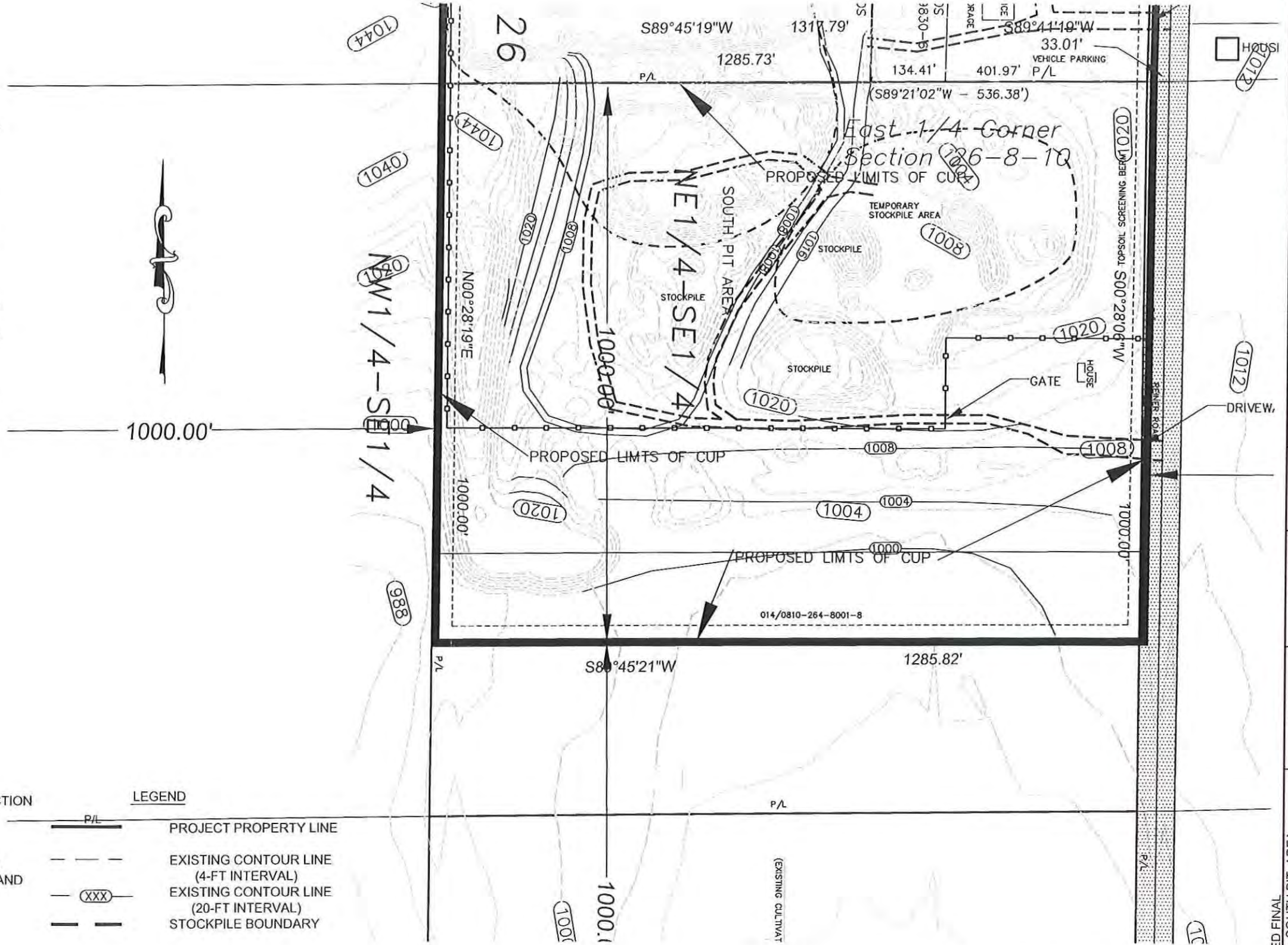
1. STOCKPILED TOPSOIL AND OVERBURDEN TO BE USE FOR FINAL SITE RESTORATION.
2. SLOPES SHOWN IN PIT AREA ARE FOR REFERENCE ONLY. ACTUAL SLOPES WITHIN PIT AREA WILL BE DETERMINED AT TIME OF RESTORATION.
3. MAINTAIN DRAINAGE TO RUNOFF RETENTION BASIN AREA WITHIN PIT AREA.
4. EXTRACTION SIDE SLOPES 3:1 IN SOIL AREAS.
5. EXCESS ROCK AND OTHER CLEAN UNCONTAMINATED FILL MATERIAL WILL BE USED AS BACKFILL AGAINST VERTICAL SLOPES TO MINIMIZE VERTICAL DROP ALONG ROCK WALLS. LOCATION TO BE DETERMINED DURING OPERATION.
6. FINAL SUB GRADE ELEVATIONS WILL BE ESTABLISHED, ALLOWING REDISTRIBUTION OF SOIL MATERIAL FROM STOCKPILES, SEEDING AND MULCHING FOR FINAL RECLAMATION.
7. CONTOUR LABEL ORIENTATION INDICATES POSITIVE SLOPE. THE TOP OF THE MARKER

GENERAL NOTES

1. SITE BOUNDARY IS BASED ON MINERAL EXTRACTION BOUNDARY MAP PREPARED BY BIRRENKOTT SURVEYING, INC. SUN PRAIRIE, WI
2. CONTOURS ARE BASED UPON DIGITAL TERRAIN MAPPING INFORMATION FROM DANE COUNTY LAND INFORMATION OFFICE.

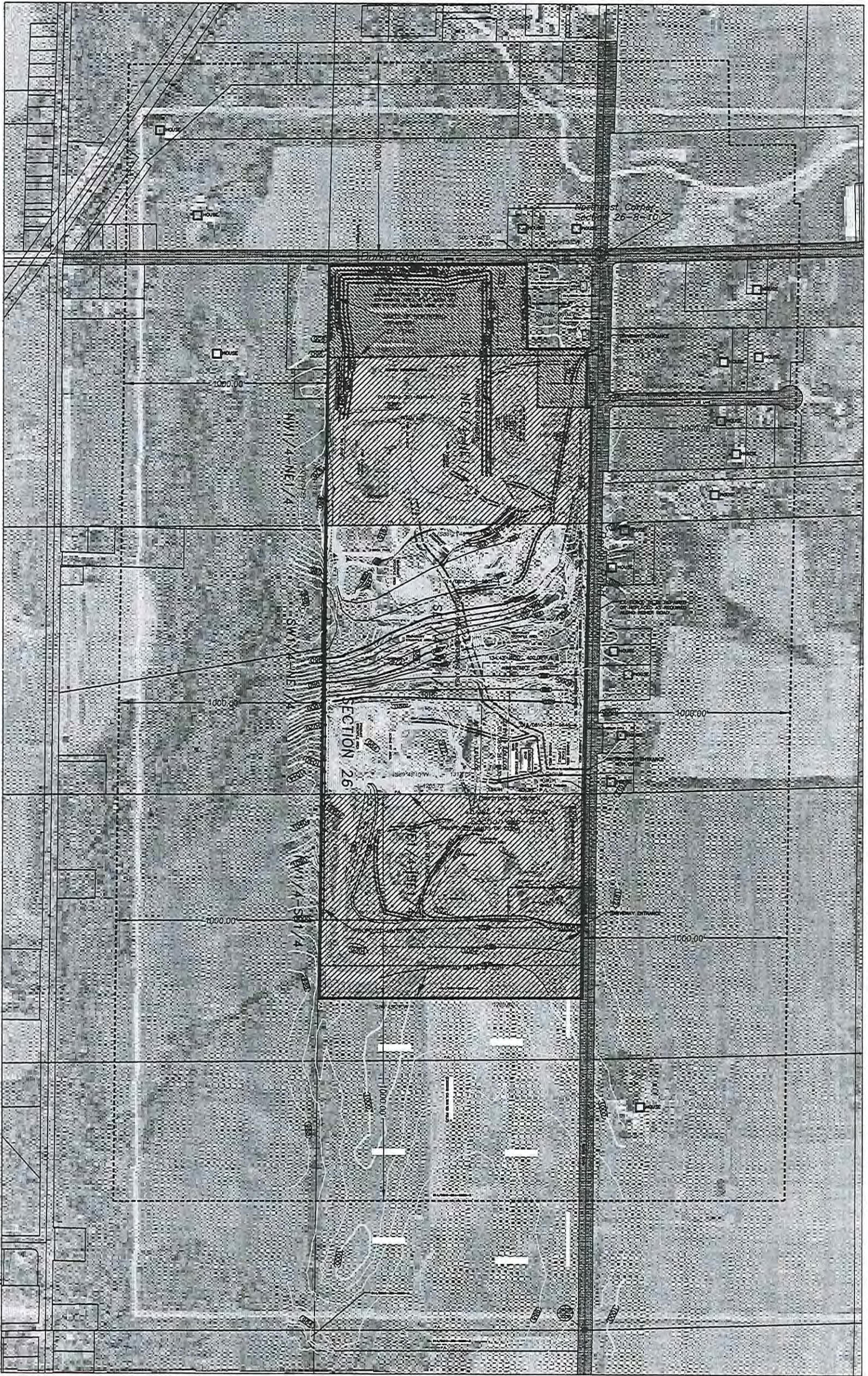
LEGEND

	P/L	PROJECT PROPERTY LINE
		EXISTING CONTOUR LINE (4-FT INTERVAL)
		EXISTING CONTOUR LINE (20-FT INTERVAL)
		STOCKPILE BOUNDARY



PROJECT		0316-10486	
DATE		DECEMBER 9, 2016	
JOB		CUP SITE/OPERATION PLAN	
DRAWN BY		JDB	
CHECKED BY		JDB	
OPERATOR		MADISON CRUSHING & EXCAVATING CO., INC. 5185 REINER ROAD MADISON, WI 53718	
OWNER		MADISON CRUSHING & EXCAVATING CO., INC. 5185 REINER ROAD MADISON, WI 53718	
PROPOSED FINAL GRADING SOUTH PIT AREA		CUP SITE/OPERATION PLAN PART OF SEC. 26, T8N, R10E, TOWN OF BURKE, DANE CO., WI	
By	Revision	No.	Date
BELKEN ENGINEERING, INC. 1840 ESSEX DRIVE SUN PRAIRIE, WI 53590 608-225-7180			





Sheet 10 of 10	NEARBY PROPERTIES	OWNER	OPERATOR	Project 0316-10486	No.	Date	Revision	By	<b>BELKEN ENGINEERING, INC.</b> 1840 ESSEX DRIVE SUN PRAIRIE, WI 53590 608-225-7180
	CUP SITE/OPERATION PLAN	MADISON CRUSHING & EXCAVATING CO., INC. 5185 REINER ROAD MADISON, WI 53718	MADISON CRUSHING & EXCAVATING CO., INC. 5185 REINER ROAD MADISON, WI 53718	DRAWN BY: JOB	Date	DECEMBER 9, 2016			
	PART OF SEC. 26, T8N, R10E, TOWN OF BURKE, DANE CO., WI			CHECKED BY: JDB	Scale	AS SHOWN			