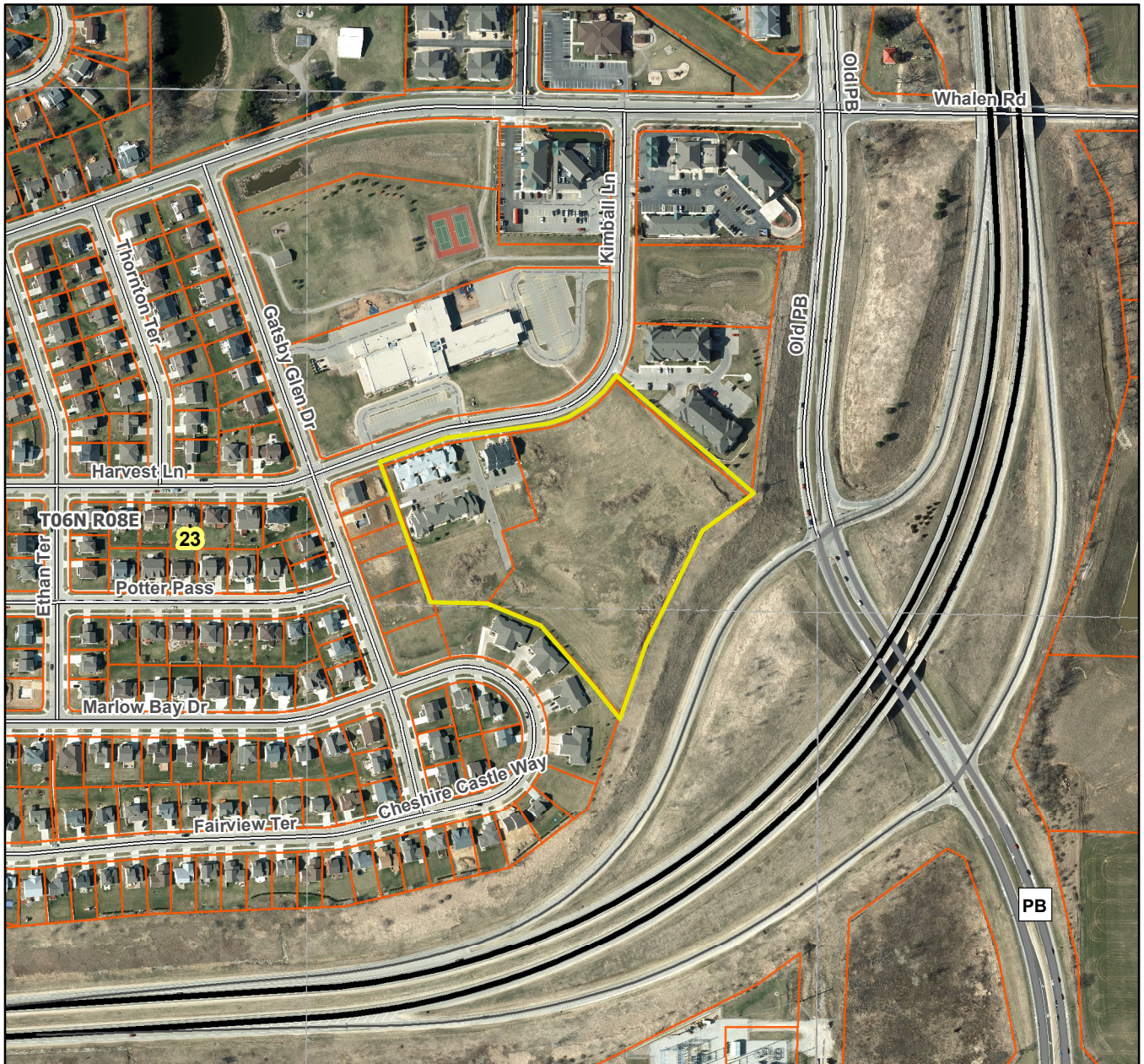


Hometown Grove City of Verona



Plat consists of 52 lots, 9.2 acres

Parks – OL 2 dedicated for conservancy, trail and recreational activities.

Parkways –N/A

Expressways – N/A

Major Highways – USH 151 and CTH PB.

Airports – Dane County Regional Airport (18 mi)

Drainage Channels – Arrows indicate the direction of drainage flows resulting from site grading.

Schools – Established.