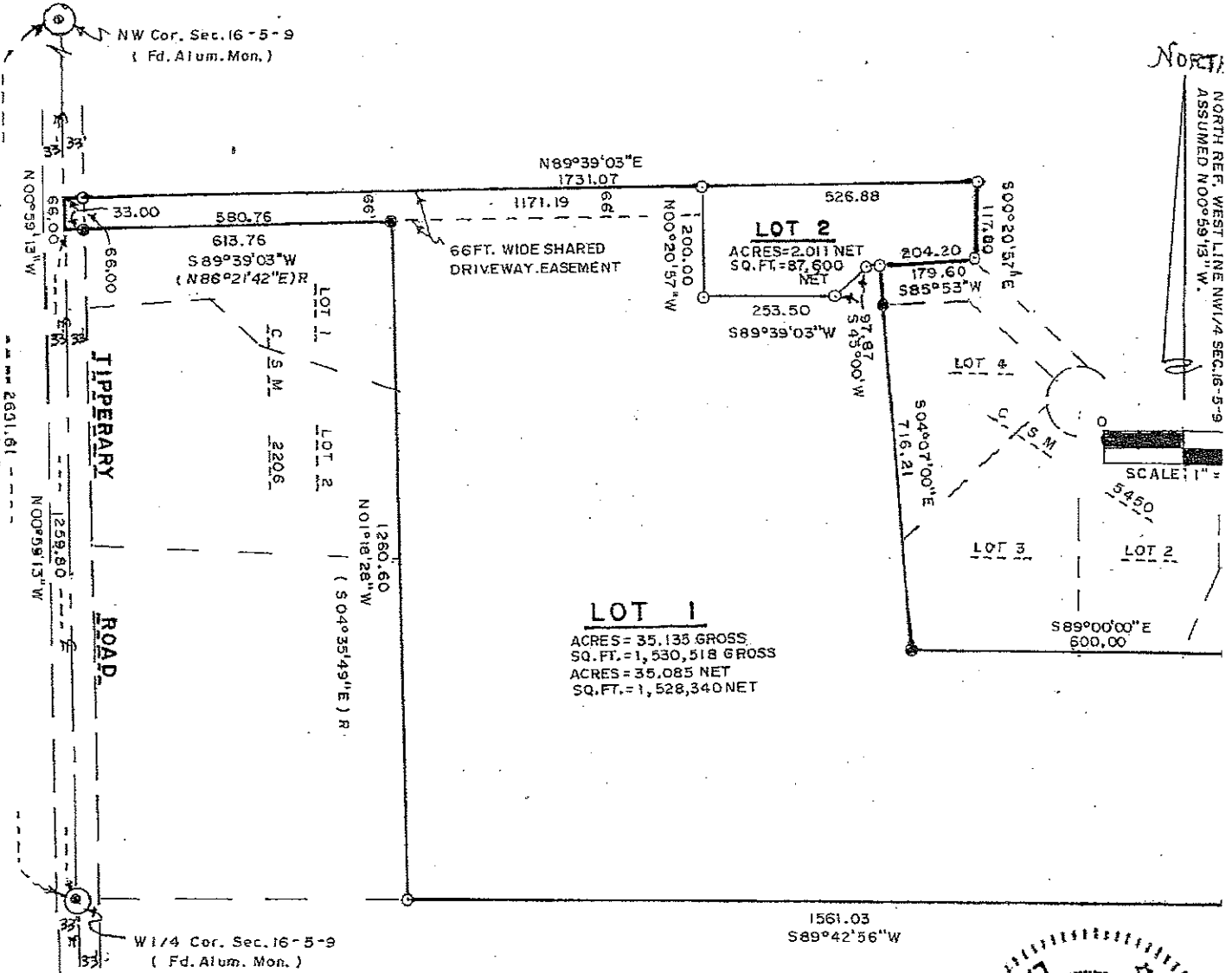


NORTH

NORTH REF. WEST LINE NW 1/4 SEC. 16-5-9
ASSUMED N00°59'13"W.



SCALE: 1" = 545'



2631.61
N00°59'13"W
(N04°21'04"W) R

1259.80
N00°59'13"W

1260.60
N01°18'28"W
(S04°35'49"E) R

613.76
S89°39'03"W
(N86°21'42"E) R

253.50
S89°39'03"W

204.20
S85°53"W

1171.19
N89°39'03"E
1731.07

526.88
S00°20'57"E
117.80

179.60
S85°53"W

716.21
S04°07'00"E

600.00
S89°00'00"E

1561.03
S89°42'56"W

NW Cor. Sec. 16-5-9
(Fd. Alum. Mon.)

W 1/4 Cor. Sec. 16-5-9
(Fd. Alum. Mon.)

