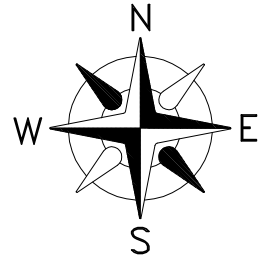
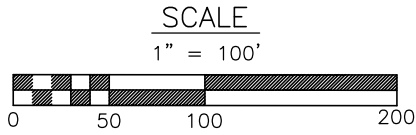


# ZONING CHANGE MAP

LOCATED IN THE SE 1/4 OF THE NW 1/4 OF SECTION 21  
T.06N., R.10E., TOWN OF DUNN, DANE COUNTY, WISCONSIN

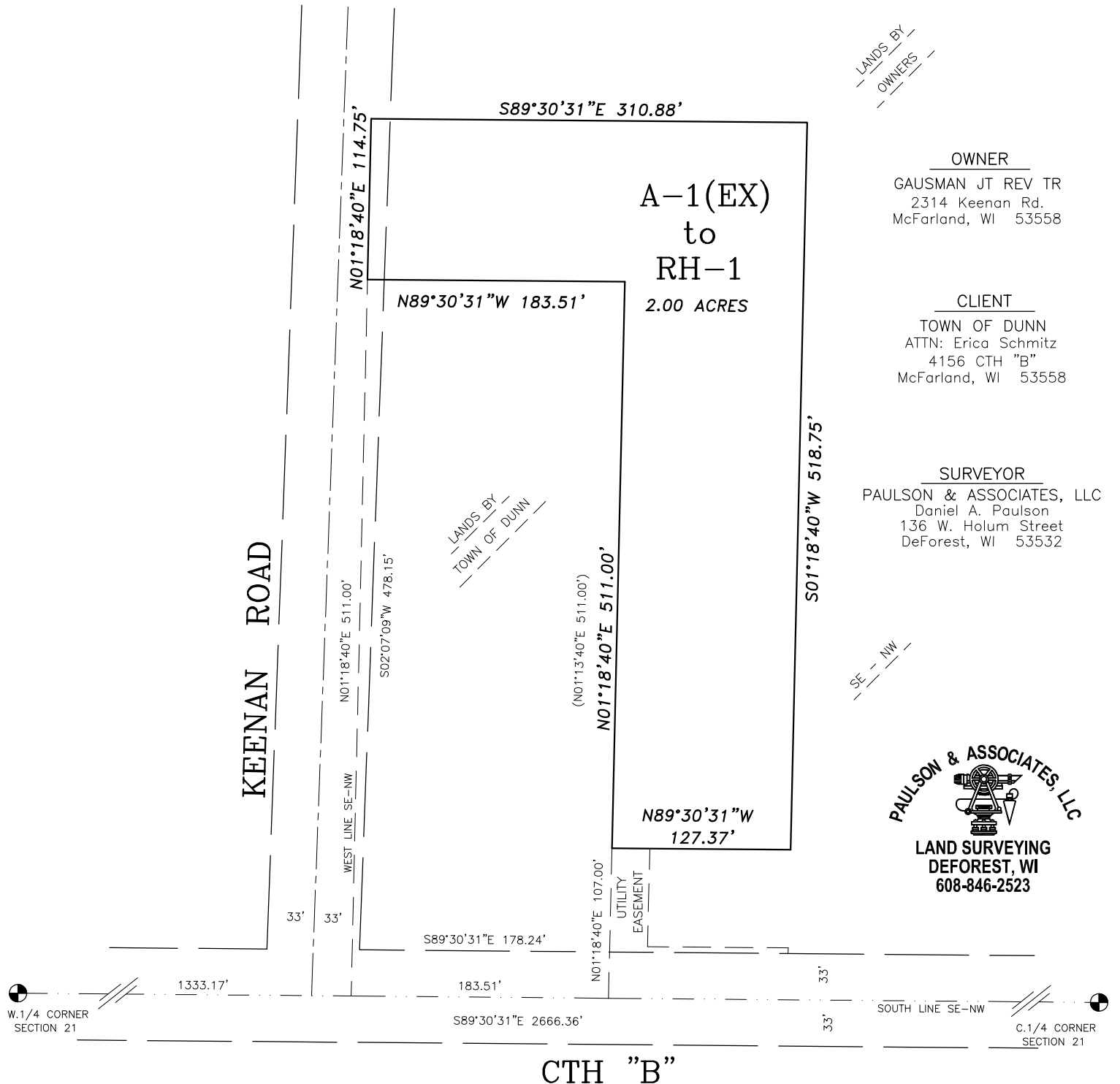


## LEGEND

⊕ DANE COUNTY SECTION CORNER  
ALUMINUM MONUMENT (FOUND)

## BASIS OF BEARINGS

THE SOUTH LINE OF THE NW 1/4  
IS RECORDED TO BEAR N89°30'31"W.



NOTE: This map was prepared from record information and is not the results of an actual field survey.