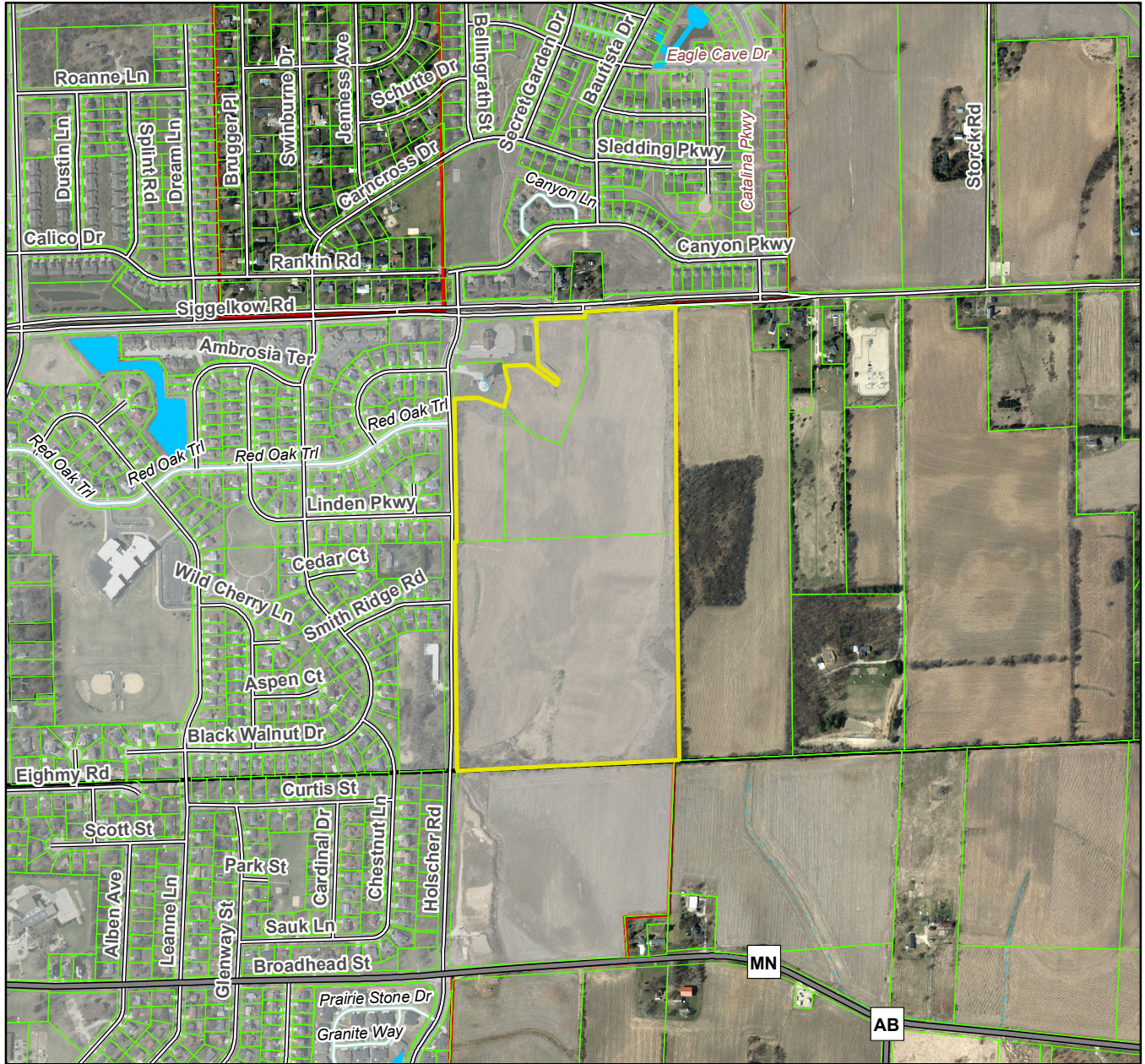


Juniper Ridge

Village of McFarland T07N R10E, Section 35



Plat consists of 193 lots, 5 outlots 73.9 acres.

Parks – Outlots 2, 3, 4 and 5 (18 acres) will be dedicated to the public for park purposes.

Parkways – N/A

Expressways – N/A

Major Highways –Siggelkow Road to the north and CTH MN to the south.

Airports – Dane County Regional Airport (10 mi)

Drainage Channels – Lots within the plat are subject to public easements for drainage purposes.

Schools – Established.

Other Planned Public Improvements - None shown.