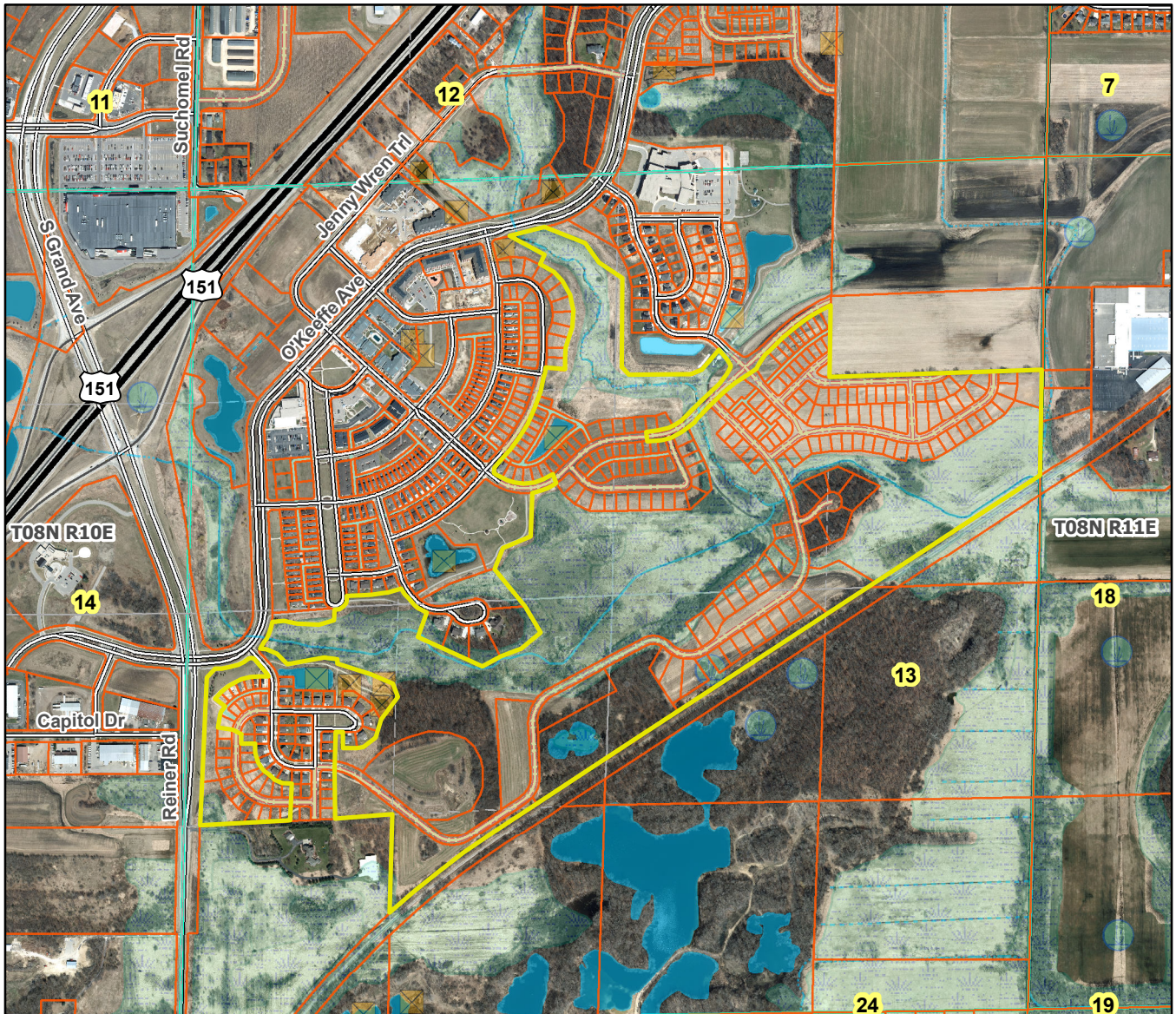


# Sixth add'n. to Smith's Crossing City of Sun Prairie



Plat consists of 194 lots, 12 Outlots 176 acres.

**Parks – None.**

**Parkways – N/A**

**Expressways – N/A**

**Major Highways – USH 151 to the north.**

**Airports – Dane County Regional Airport (7 mi)**

**Drainage Channels – Drainage arrows shown represent direction of runoff.**

**Schools – Established and study is underway for the entire school district to build new schools or expand existing schools.**

**Other Planned Public Improvements:**

**OL's 67, 71, 74, 75, 76 are shown as either private open space or as future development.**

**OL's 68, 69, 70, 72, 73, 77, 78 are shown as dedicated to the public for a combination of parks, trails, wetlands, stormwater management and or slope preservation.**