

Final Plat - Village at Autumn Lake Replat No. 3

City of Madison

Plat consists of 24 lots, 1 Outlot, 2.96 acres.

Parks - None shown.

Parkways - none

Expressways - N/A

Major Highways - I 39/90/94 to the west approximately 0.5 mile.

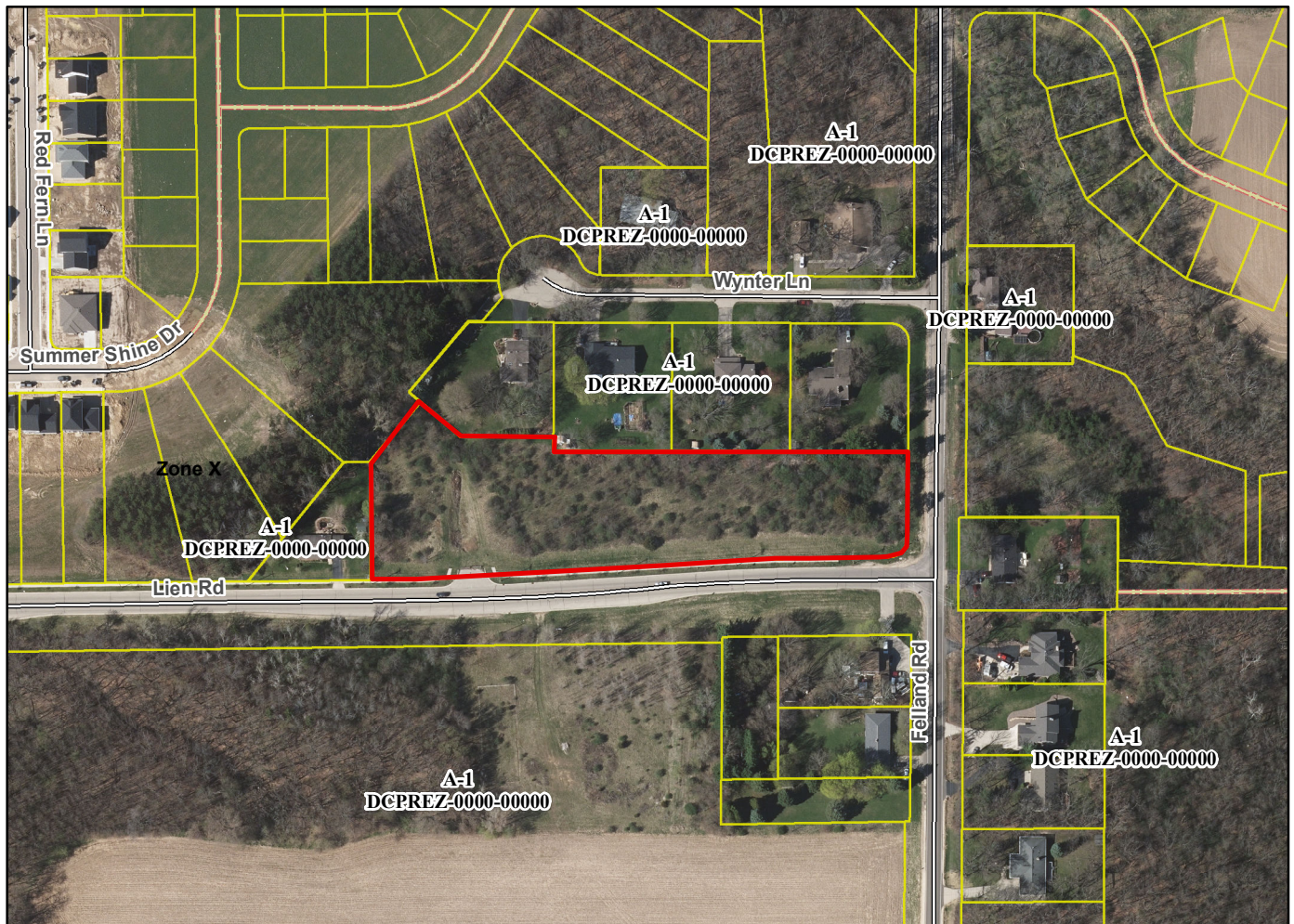
Airports - Dane County Regional

Drainage Channels - All lots subject to public easements for drainage purposes.

Schools - established

Other Development - None shown.

Plats of subdivisions located in all other incorporated municipalities shall be submitted to the committee, as provided by section 236.12(2)(b) of the Wis. Stats., for the purpose of determining whether the committee has any objection to the plat. The basis for any objection to any such plat shall be that the plat conflicts with parks, parkways, expressways, major highways, airports, drainage channels, schools or other planned public developments.



Motion to certify with no objections: _____, Second: _____ Vote: _____