

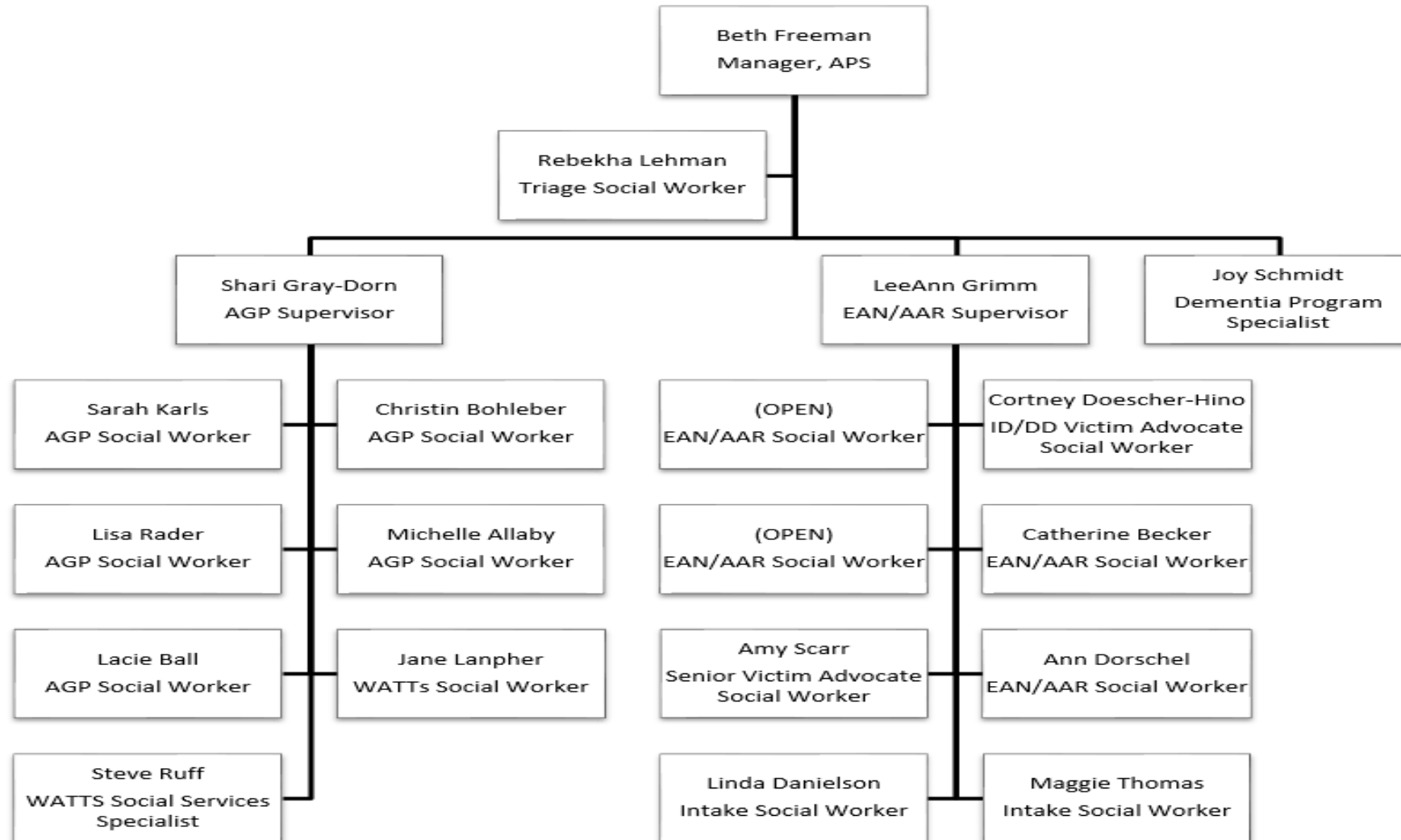
Dane County Adult Protective Services 2020 Overview

JULY 6, 2021

Adult Protective Services

- ▶ Adult Guardianship Program
- ▶ Elder Abuse / Adults At Risk Investigations
- ▶ APS Helpline
- ▶ Triage Social Worker
- ▶ Dementia Crisis Program Specialist
- ▶ Victim's Advocate Programs
 - ▶ I/DD Victim Advocate (18+ years)
 - ▶ Senior Victim Advocate (60 + Years)

ADULT PROTECTIVE SERVICES

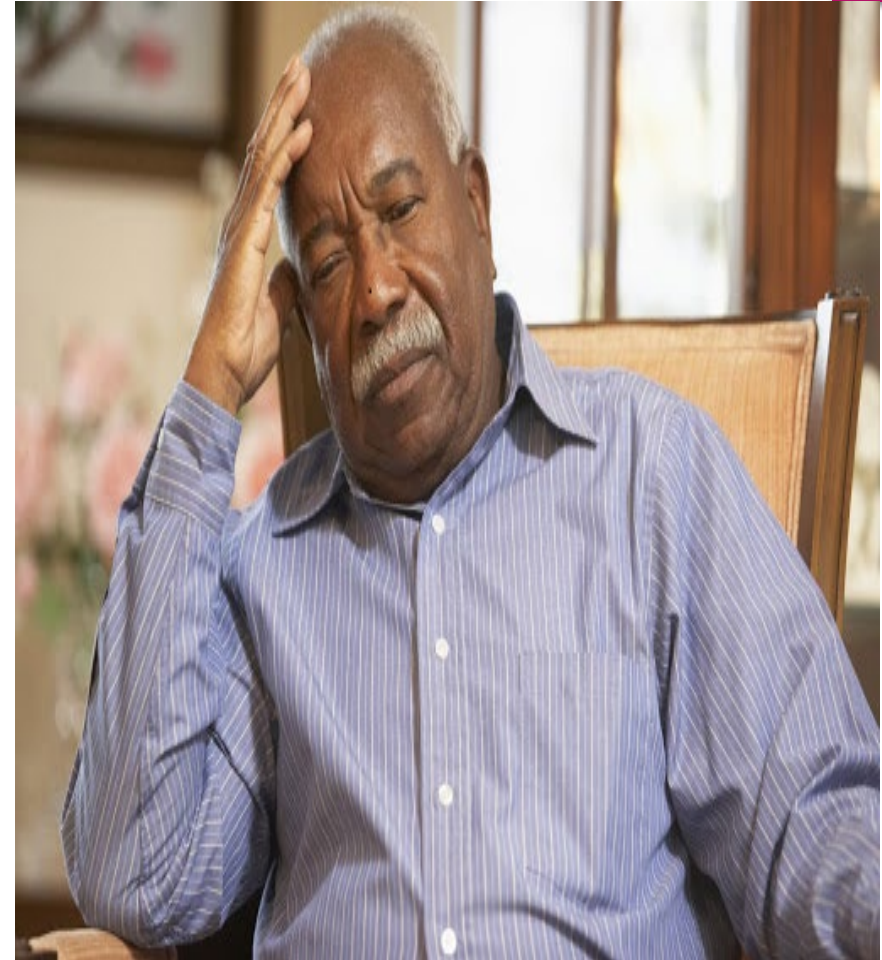


Adult Protective Services – Other Roles in the Community

- ▶ Facilitate EACCR & ID CCRs, participate in COSC
- ▶ Facilitate Hoarding Task Force & FAST interdisciplinary meetings
- ▶ Annual Domestic Violence in Later Life Conference (October 28, 2021)
- ▶ Worked with MCOs & ICAs to develop shared training curriculum (Fall 2021)
- ▶ Present to financial institutions, law enforcement and other community groups about role of APS in Dane County
- ▶ Working to develop more effective crisis responses for persons with dementia
- ▶ Part of state wide work group which developed “APS Tool Kit” which launched in Feb 2021
- ▶ Piloting a new assessment tool of our of the University of MI to assess risk of Financial Exploitation – Financial Vulnerability Assessment Tool (Older Adult Nest Egg Tool)

ELDER ABUSE IN DANE COUNTY

2020 OVERVIEW



2020 Contacts to APS Helpline

- ▶ Total Contacts: 3,571
- ▶ Total EAN Contacts: 1,608
- ▶ Total EAN Intakes: 332
- ▶ Total Consults: 1,132
- ▶ Total "Other:" 78



Breakdown of Reports - Type

Financial Exploitation

- 141 Reports
- 36.20% of all reports

Self-Neglect

- 111 Reports
- 28.50% of all reports

Abuse

- Physical Abuse
48 Reports
12.30 % of all reports
- Emotional Abuse
60 Reports
15.40% of all reports

Breakdown of Reports - Victims

By Age Group

▪ 60-69 yrs	150	38.70%
▪ 70-79 yrs	121	31.20%
▪ 80-89 yrs	102	26.30%
▪ 90+ years	15	3.90%

By Gender

▪ Male	165	42.50%
▪ Female	223	57.50%

By Race

• White	240	61.90%
• Black	26	6.70%
• Pacific Islander	0	0.00%
• American Indian	0	0.00%
• Asian	3	0.80%
• Other	5	4.30%

Breakdown of Reports - Abuser

FAMILY

• Daughter	20	7.10%
• Son	76	27.00%
• Spouse	18	6.40%
• Sibling	3	1.10%
• Grandchild	14	5.00%
• Other Relative	6	2.10%

OTHER

• Friend	22	7.80%
• Unknown	47	16.70%
• Other	51	18.10%
• Home Care	6	2.10%
• Facility	5	1.80%

ADULT GUARDIANSHIP PROGRAM

2020 Overview for Persons
over 60 years old



Adult Guardianship Services

- ▶ Completed 583 Protective Placement reviews in 2019
- ▶ Petitioned for 135 Guardianships (Person and/or Estate)
- ▶ 126 Face to Face visits (virtual and in person)
- ▶ Developed a support group for guardians (April 2021)
- ▶ Monitor around 600 persons under guardianship & protective placement

NewBridge – 2020 Volunteer Guardianship & Representative Payee Program

- ▶ Provides volunteer guardians and representative payees to individuals over 60 living in the community who have no one to act in that capacity
- ▶ Volunteers receive ongoing support and training by the program coordinator, Katie Brietzman.
- ▶ Currently there are 31 volunteer guardians, one has been a volunteer since 2002

NewBridge – 2020 Volunteer Guardianship & Representative Payee Program

“In the Community”

- 24 Individuals
- 24 Volunteers
- 1,466 Hours of Support

Guardianship

- 56 Individuals
- 56 Volunteers
- 2,426 Hours of Support

Rep Payee

36 Individuals
33 Volunteers
1,539 Hours of Support

Trends in Adult Protective Services

- ▶ Increasing number of Financial Exploitation related reports
- ▶ Changing role of care manager in Long Term Care programs
- ▶ Oversight of certified Adult Family Homes and Supported Living settings has changed as a result of the Family Care transition
- ▶ Increase in out of county placements by Family Care Model programs
- ▶ Need for integrated information system within APS to assist in the coordination of client related work across different areas of APS
- ▶ Continued need for dementia capable settings and services to support persons with dementia experiencing a behavioral crisis

Thank you

BETH FREEMAN, MSW
MANAGER
ADULT PROTECTIVE SERVICES
608-242-6448
FREEMAN.BETH@COUNTYOF
DANE.COM