

FRIENDS OF FESTGE PARK AND SALMO POND

Restore-Improve-Preserve

Work Plan

February 2023 - 2024

Presented March 16, 2023

Board of Officers & Directors

Gary Nelson, President

William Carlson, V. President

Jeanette Hoard, Secretary
& Treasurer

Dennis Connor, Director

Bruce Javenkoski, Director

Justin Nelson, Director

James Parry, Director

David Earles, Contributor

Gary Nelson started restoration at Festge County Park in October, 2010, under direction of Naturalist Wayne Pauly. Work began on the East slope of Salmo Pond later that year.

On January 26, 2013, our first organizational meeting was held with Attorney Anthony (Tony) Varda agreeing to submit a filing for us to become a 501(c)(3) non-profit organization. Due to politics in Washington, DC, our filing was finally approved on October 3, 2014, retroactive to May 4, 2013.

Our Mission: Friends of Festge Park is a volunteer group committed to restoring, maintaining, and enhancing the diversity of the prairies, woodlands, streams and wetlands of Festge County Park and Salmo Pond County Park.

Our Vision: Friends of Festge Park seeks to restore the native plants and wildlife habitats at Festge County Park and Salmo Pond County Park for the enjoyment of visitors. We are committed to improving the quality and diversity of the stream, prairies, and oak savannas through plantings and habitat improvement. We seek to train volunteers and offer field naturalist programs to schools and the community in cooperation with Dane County Parks to provide long-term stewardship of Festge County Park and Salmo Pond County Park.

FOF Accomplishments – February 2022 to February 2023

Estimated Values of Accomplishments and Organization:

- 5 acres cleared from 2/22 to 2/23=75 acres cleared at Festge Park + 3 managed planted prairies totaling 30 acres + 2.5 acres cleared at Salmo Pond for a grand total of cleared and managed acres from October, 2010 to February, 2023 of 117.5 acres.

Estimated value: \$1,762,500 @ \$15,000 per acre.

- 2022 Volunteer Hours: Clearing/Planting/Maintenance – 2,129
 - Administrative – 411
 - Education – 75
 - Professional – 33
 - Total Hours – 2,648

2022 Value of clearing/planting/maintenance hours @\$27/hour = \$57,483

2010–2022 Value of 30,253 hours = \$816,831

2022 Value of 519 admin/education/professional hrs. @\$20/hour = \$10,380

2010–2022 Value of 7,050 hours = \$141,000

Total Value of Volunteer Hours for 2010–2022 = \$957,831

- 2013–2014 Cost of initial establishment of 501(c)3 Non-Profit Organization, for Charitable Contribution Status: \$3,000 Attorney's Fees, \$400 Filing Fee for IRS and \$15 Filing Fee for the Dept. of Financial Institutions, State of Wisconsin. Total \$3,415. Annual fees total \$64.

Other Specific Work and Accomplishments:

- Seeding at Festge Park, totaling 3 acres.
- Performed maintenance throughout cleared acreage, in both areas, by hand-pulling or cutting invasive plants; brush cutting, mowing, clean-up and piling.
- Application of herbicides conducted from April thru August.
- Planned, maintained and added firebreaks throughout cleared acreage.
- Maintained two former hayfields, converted to prairies totaling 26 acres, in addition to previously managed 5-acre planted prairie.
- Continued removal of invasive trees along the far west corner of Salmo Pond.
- Conducted 5 all-day chainsaw work parties at Festge Park.
- Supported DCP crew (AM) and organized (PM) chainsaw work party at Festge Park on 1/27/23.

FOF Accomplishments – February 2022 to February 2023 – Con't

- Participated in, and helped coordinate, 1 Dane County Parks' work event at Salmo Pond, continuing with watering and hand-weeding from May – Sept.
- Burned 70+ brush piles throughout Festge Park & Salmo Pond.
- Assisted in Park's project of planning and installing new signage throughout Festge Park.
- Monitored and fledged 36 Bluebirds (Dave Lucey reports to BRAW).
- Sponsored and marketed 9 educational events presented by Chris Gavin: foraging, winter tree ID, nut processing, and primitive shelter building.
- Monitored DNR's DWD testing site at Salmo Pond, 9/1/22 – 1/31/23.
- Assisted CP Boy Scout Troop 87 preparation for primitive shelter building.
- Assisted in planning of new bench installation, by the Festge Park kiosk.
- Participated in Cross Plains annual Trout Days event May 7, 2022.
- Joined the Cross Plains Chamber of Commerce as a "Friend" March, 2022.
- Performed various administrative duties, held Board meetings, marketing, fund-raising and filed tax and governmental forms, to continue Friends of Festge Park, Inc., 501(c)(3) charitable status.

DCP Work Highlights – February 2022 to February 2023

- Coordinated ongoing management of two former hayfields (26 acres) from agricultural use, to prairie land management, with final planting completed January, 2022.
- Completed reconfiguration of Salmo Pond parking lot, adding two retention ponds, updating nearby paths and installing a new vault toilet.
- Organized annual chain saw crew work party on 1/27/23.
- Used heavy equipment to move and pile downed trees and brush for burning and clearing sites in preparation for prescribed burns and seeding.
- Scheduled staff, LTE's and OFS work groups for brush cutting, hand-weeding and other invasive removal throughout the year.
- Continued supplies of herbicides, chemicals and oils for chain saw equipment.
- Sprayed herbicides to treat usual, and noxious, invasives at Festge Park and Salmo Pond.
- Widened, graded and put down gravel on the service road between the two former hayfields/upper and lower prairies, to accommodate more equipment and regular usage. Some gravel also placed on the access road east of the upper prairie.
- Mowed trails throughout Festge Park including widening trails, as needed.
- Updated the mow map to include regular mowing around the perimeter of the (lower) 16-acre prairie, as has been done for the (upper) 10-acre prairie.
- Cut trees in sensitive areas along with storm damage clean-up, as necessary.
- Installed new signage and posts throughout Festge Park.
- Installed a new counter at the main gate.

FOF Work Plan - February 2023 to February 2024

Festge County Park

- Clear approximately 5-6 acres of invasive, dead-falls and undesired trees: box elder, poplar, hackberry, red cedar, dead elm, cherry and basswood.
- Continue clearing on the highest point of Festge Park, located north and on the west side of the upper prairie.
- Hiring local contractor with equipment to cut small invasives in level areas adjoining the upper and lower prairies. (Plan approved by Lars Higdon)
- Support Spring and Fall prescribed burns of approximately 100 acres at Festge Park and Salmo Pond; preplanning, adding and maintaining firebreaks.
- Seeding as many acres as possible, with seeds provided by DCP.
- Apply herbicides to invasive plants and re-sprouts, throughout cleared areas, from early Spring to Fall.
- Continue maintenance of weeding, hand-logging, brush cutting, and mowing throughout cleared acreage.
- Organize and prepare for chain saw work days.
- Burn brush piles throughout Festge Park and Salmo Pond, as necessary.
- Coordinate, prepare and oversee group volunteers: CP Lion's Club, Edgewood in the Community, Boy and Girl Scouts, 4H Clubs, and others.

Salmo Pond County Park

- Continue maintenance of weeding, hand-logging and brush cutting throughout cleared acreage.
- Watering and hand-weeding retention ponds, as needed.
- Seeding and re-seeding in cleared areas.
- Planting bushes along the path on the northwest shoreline.
- Clearing remaining invasive trees on the far west corner of the Pond.

DCP Assistance Requests

- Plan and conduct prescribed burns on approximately 100 acres at Festge Park and Salmo Pond.
- Seeds for planting 10 cleared acres at Festge Park; 8 acres woodland savannah & 2 acres open prairie. Recognizing large amounts of seeds were planted in the two former hayfields in 2021 & 2022, many cleared acres have not had prescribed burns or timely seeding, resulting in compounding maintenance exponentially each year.
- Assistance with maintenance throughout Festge Park.
- Mowing and maintenance of all trails.
- Complete signage installation with removal of old signs and post not needed.
- *Add new trails in cleared areas.*
- *Add a circle (hub) and trails (to edges, as spokes), at the top of the hill of the 10-acre upper prairie.*
- *Raemish Park picnic area--establish specific name for area as reference? Maintain 60+ year-old fireplace with tuck-point work.*
- *Revisit annually: removing invasive species and trees from the Overlook and east bluff faces, on the Hwy. 14 right-of-way.*
- *Add another layer of small stones in the Overlook circle (improves step height) and fix stone step above the circle due to wash out, creating hazardous hole.*
- *Add metal boxes to hold coals by Shelter 1 & 2 grills; eliminates coals dumped in the wooded or grassy areas. Add boxes for wood by Shelter 1 fire pit? Note this area is often used by park visitors.*
- *Implement improvements to equipment shed, to accommodate more equipment, adding security, protection from the elements, and pestilence. (Utilize 3 piles of sand & gravel nearby for floor improvements?)*
- *Continue planting various species of trees on Hwy. 14 and east side of Scherbel Road, other areas within Festge Park, and Salmo Pond's north shore.*
- Advise of available nursery-grown trees for planting each Spring.
- *Status of plan to replace the old swing set; "horse" swings and framework removed in 2020 and 2021? Adding on to nearby equipment? In budget?*
- Clean the main entrance gate at Festge Park.
- *Update DCP shelter reservations information to reflect available Overflow Parking area. Website shows "No additional Parking" & "Limited Parking".*
- Repair and add gravel to driveway into the Overflow Parking area.

DCP Assistance Requests – Continued

Salmo Pond

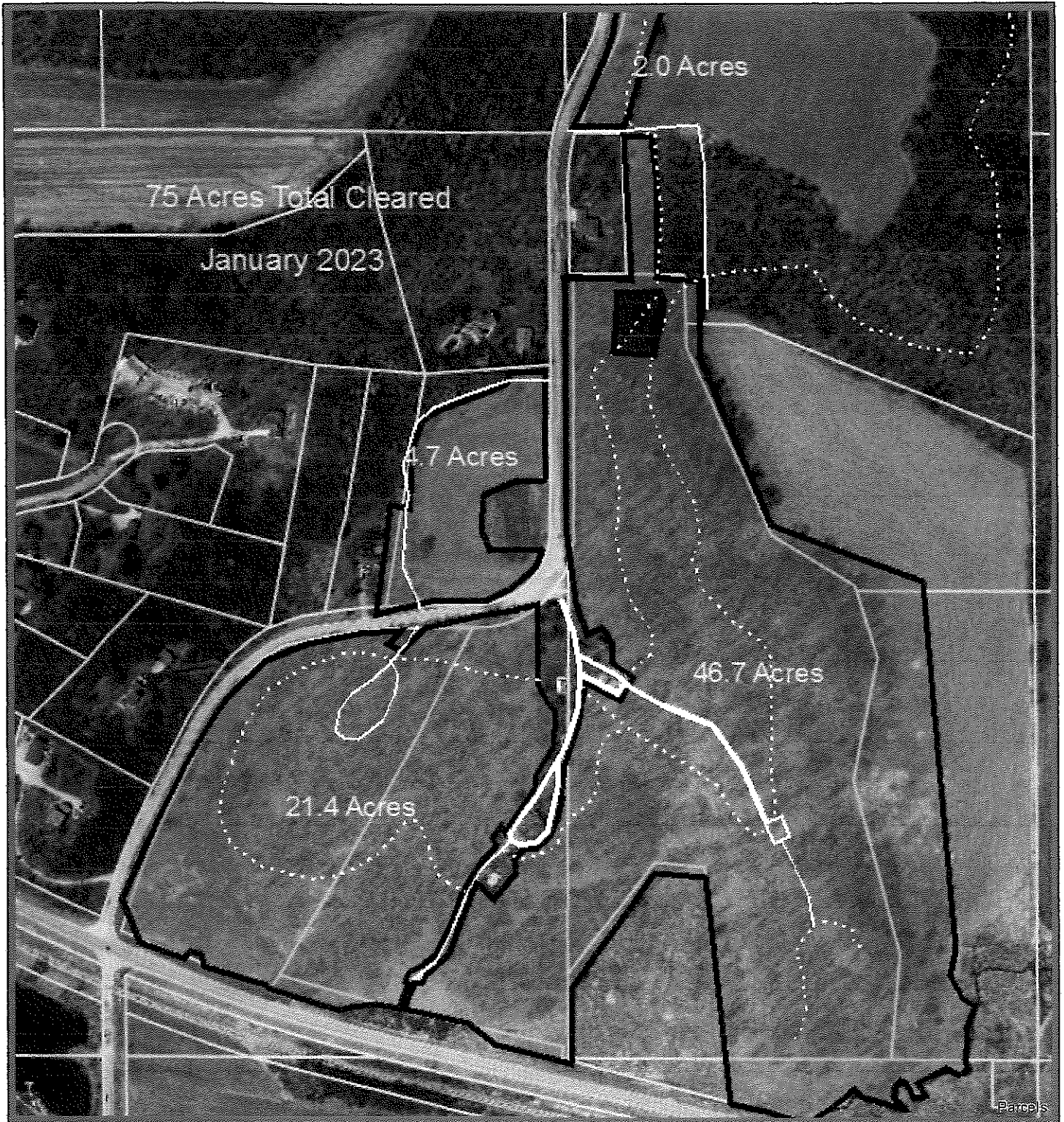
- *Create overall plans reflecting long-term waterway health:*
 - ~Increased erosion on the Northeast point/swim area.
 - ~Shoreline rock work and riprap erosion.
 - ~Bass spawning depth and flood wash at the west end of the Pond.
 - ~Weeds in the center and east end of the Pond. Request stream and pond improvement survey? (Completed in 2021?)
 - ~Remove debris from the west-end slue way; as a continuous task.
- *Create a long-term, natural area plan* applicable to wetland area.*
- *Conduct annual prescribed burns on cleared acreage; south and east slopes, area off mowed grass near parking lot.*
- *Apply herbicides considering wetland rules for invasives and noxious plants.*
- *Provide wetland seeds and the newly cleared north shoreline and upper path.*
- *Create trail map of Salmo Pond with named walking trail and other features.*
- *Install (replacement) kiosk, with DCP and DNR information, space for Friends of Festge Park information, and possibly BECWA.*
- Assist the DNR with obtaining Right-of-Way Permits for the 2023-2024 hunting seasons; to affect the move of the DWD testing unit and dumpster to the east side of Scherbel Road, on DNR owned land. This will allow year-round utilization of walking, parking and trash accessibility in the graveled area. The DWD site is active a minimum of 5 months, and is only dumped once until removed, regardless of smell, over-full or other items in the dumpster.

° accessibility park repairs

Note: Under requests, items from previous plans or requested in another way, are *italicized*.

Kiosk - Salmo pond add

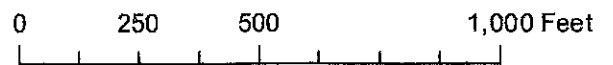
Festge Park - Acres Cleared to Date



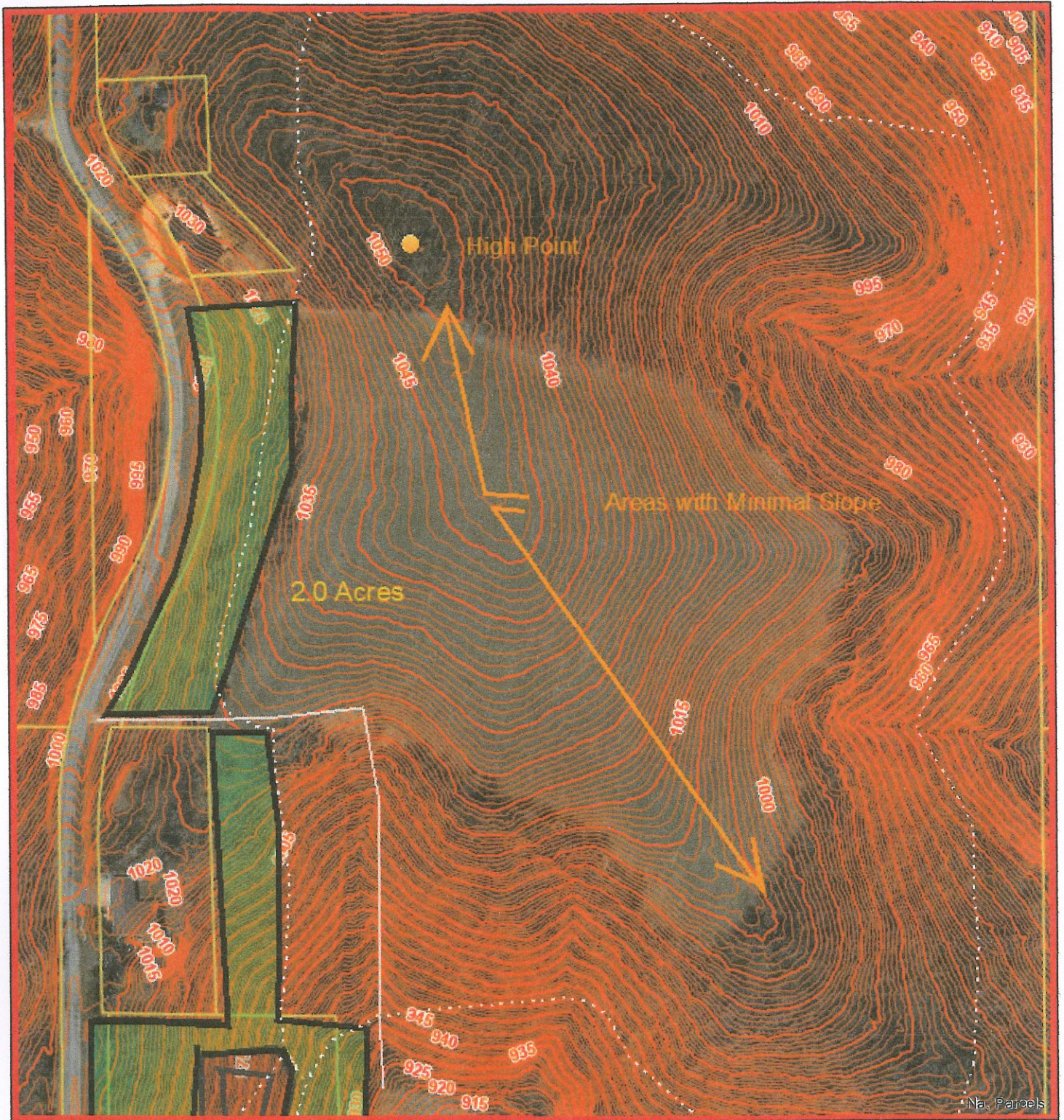
February 27, 2023

Dane County Mask

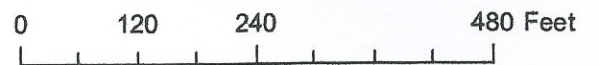
Parcels









Festge Park - Areas with Minimal Slope



February 27, 2023



-  Dane County Mask 1 foot Intervals
-  Parcels
- 5 foot Intervals**
-  Index
-  Index Depression
-  Intermediate
-  Intermediate Depression

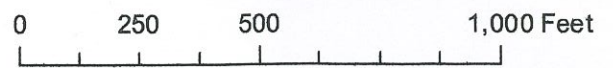


Festge Park - Acres Cleared to Date

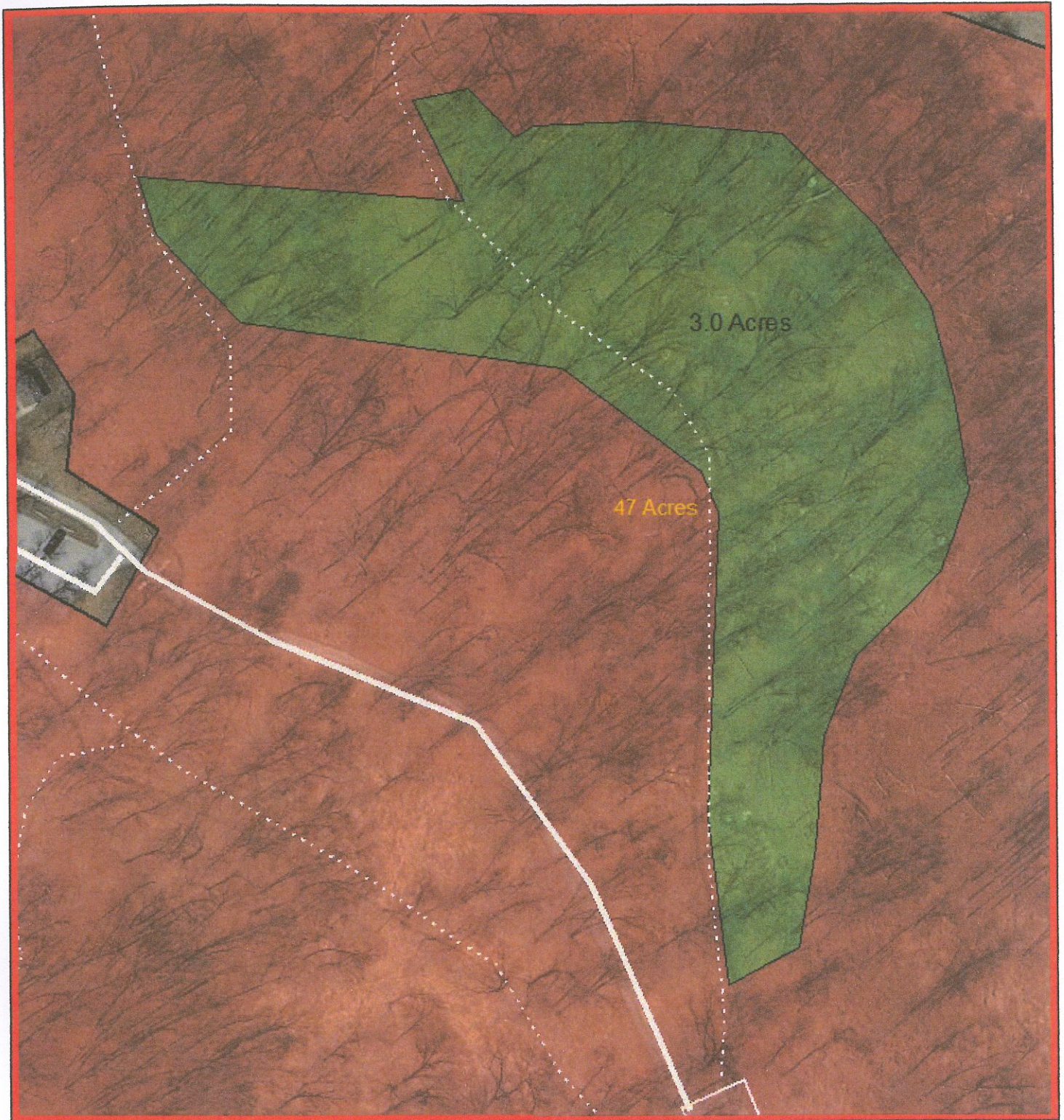


February 27, 2023

- Dane County Mask
- Parcels

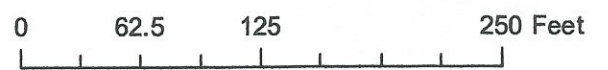


Festge Park 2022 Seeding - 3 Acres



March 13, 2023

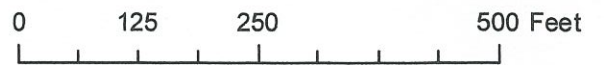
 Dane County Mask





Salmo Pond Clearing Status 4/14/2022



April 14, 2022



Dane County Mask

-  Dane County Mask
-  Parcels

