

Final Plat - Acacia Ridge

City of Madison

Plat consists of 421 lots, 23 outlots, 135.4 acres.

Parks - OL 2, 4, 17 are devoluted to private open space and OL 21 dedicated to the public for park purposes.

Parkways - Watts Road (east-west)

Expressways - N/A

Major Highways - Mineral Point Rd. to the north and Pleasant View to the east.

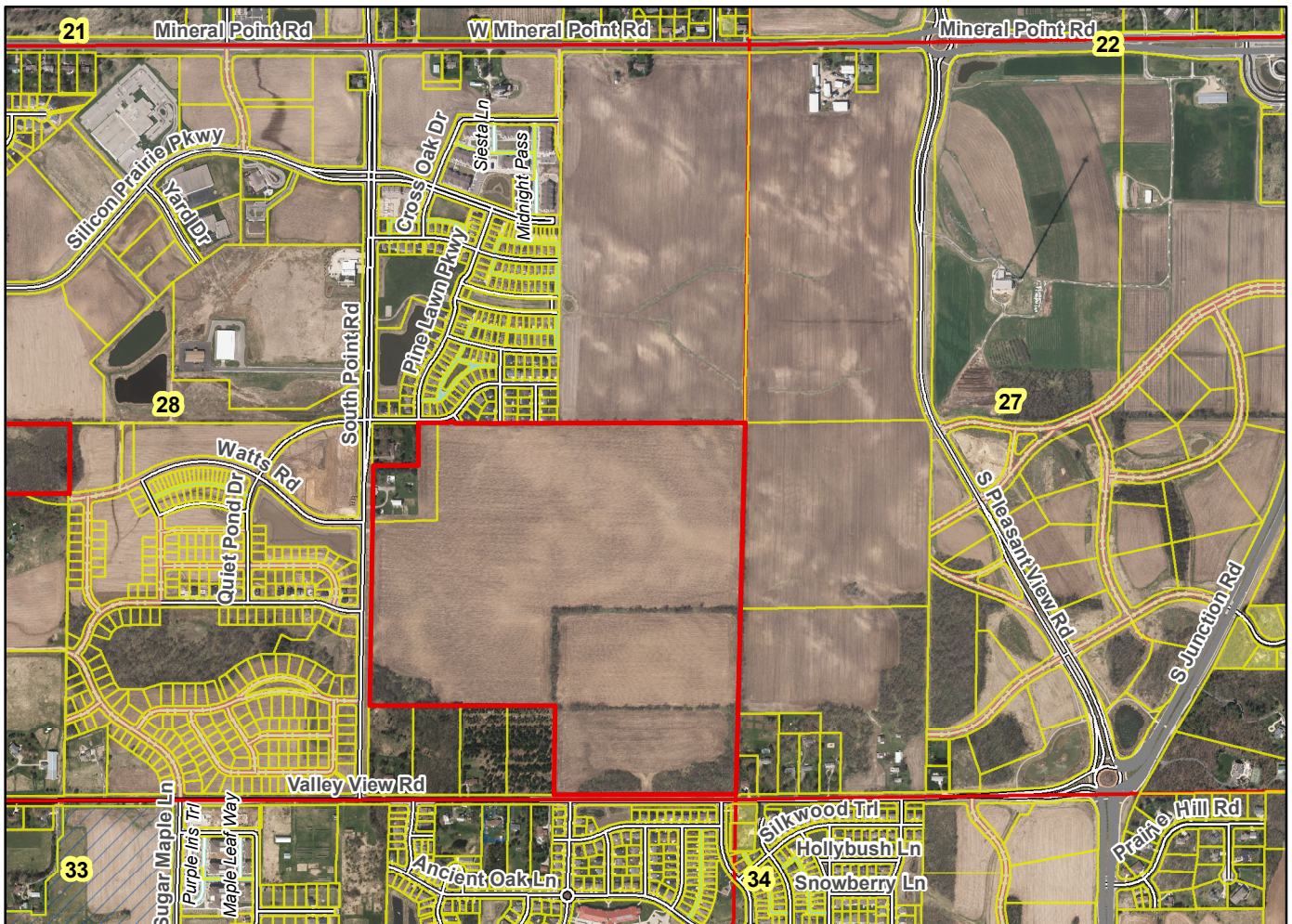
Airports - Dane County Regional

Drainage Channels - Public easements for drainage purposes are shown throughout the plat.

Schools - established

Other Development - OL 15 reserved for future development.

Plats of subdivisions located in all other incorporated municipalities shall be submitted to the committee, as provided by section 236.12(2)(b) of the Wis. Stats., for the purpose of determining whether the committee has any objection to the plat. The basis for any objection to any such plat shall be that the plat conflicts with parks, parkways, expressways, major highways, airports, drainage channels, schools or other planned public developments.



Motion to certify with no objections: _____, Second: _____ Vote: _____