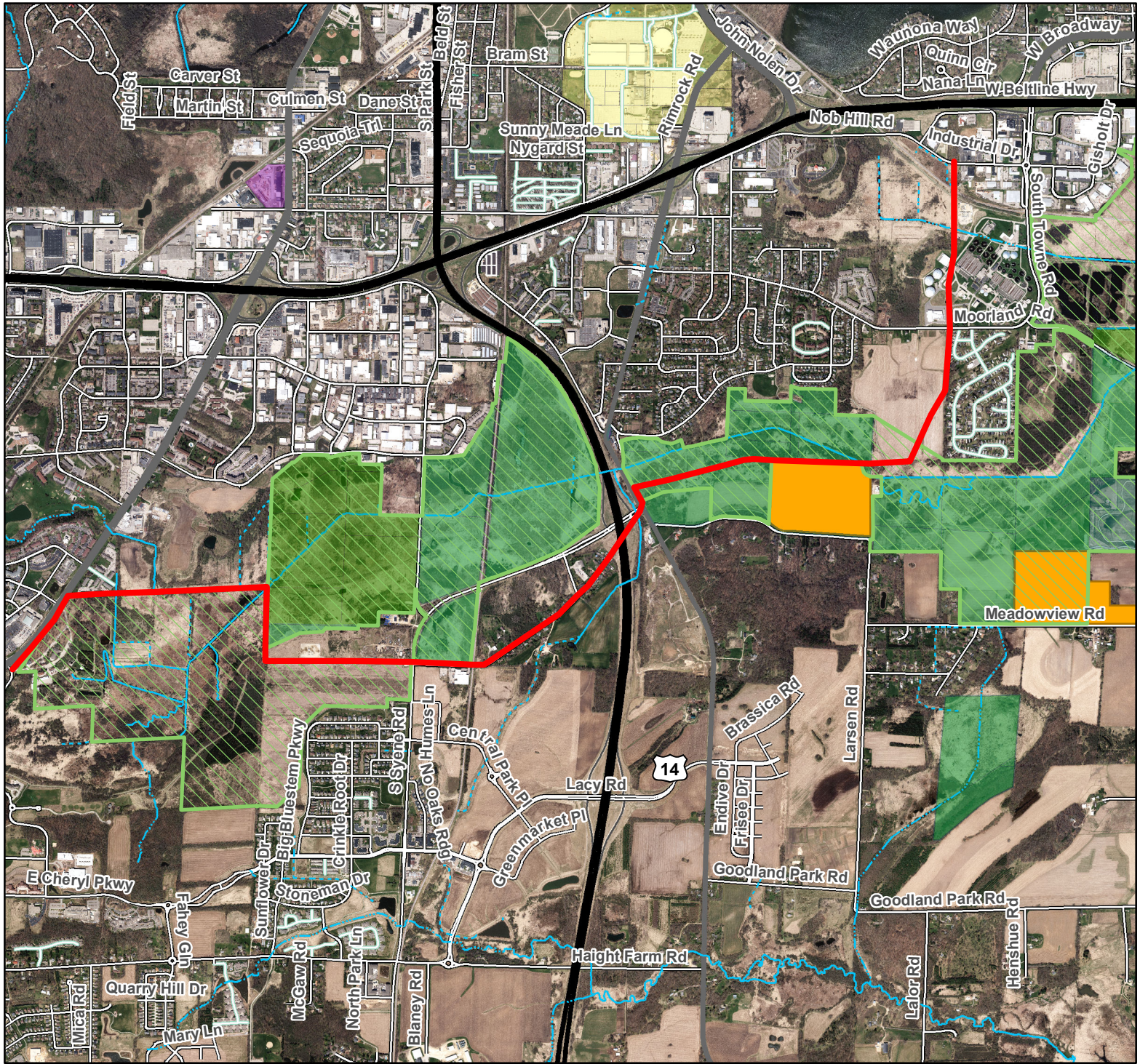
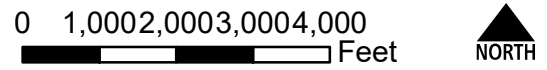


ATC Transmission Line Easement, City of Fitchburg Lewis Nine Springs E-Way / Capital Springs Recreation Area



- County owned
- Conservation Easements
- Capital Springs Recreation Area Boundary
- Transmission Line Easement



Data Sources:
 Tax Parcels (3-2018)
 Digital orthophoto from April 2017.

Prepared by Dane County Land & Water Resources Department, February 15, 2021.

Document Path: H:\LandAcquisition\AcquisitionProjects\Fitchburg\ATC_easement\ATC_Easement_NineSprings_CapSprings.mxd

