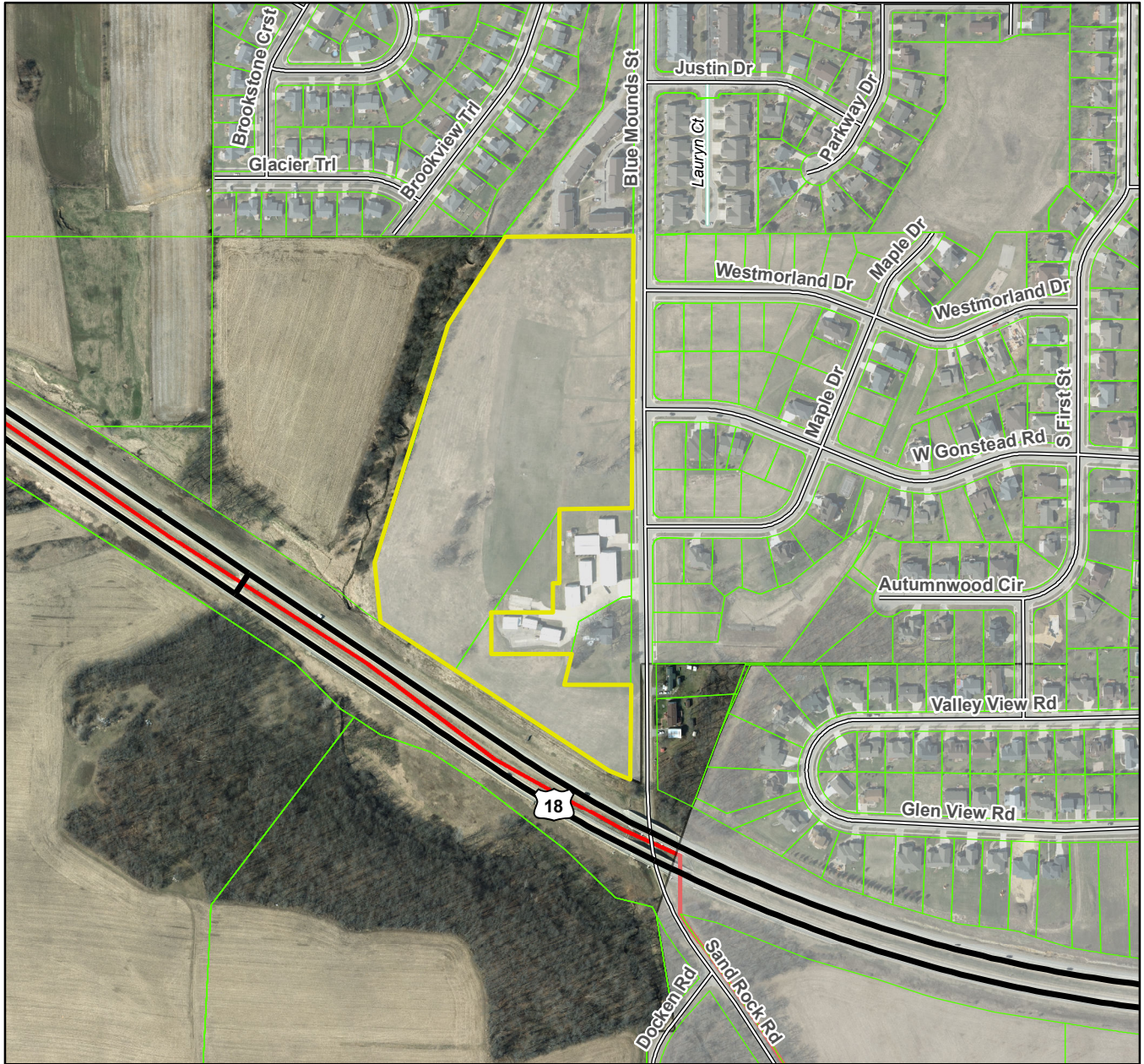


# Westview Heights of Mount Horeb

## Village of Mount Horeb T06N R06E, Section 14



**Plat consists of 13 lots, 19.9 acres.**

**Parks – OL 2 to be dedicated to the public for park purposes.**

**Parkways – N/A**

**Expressways – N/A**

**Major Highways – Adjacent to USH 18/151**

**Airports – Dane County Regional Airport (33 mi)**

**Drainage Channels – All lots within the plat are subject to public easements for drainage purposes.**

**Schools – Established.**

**Other Planned Public Improvements - OL 1 dedicated to the public for stormwater management.**