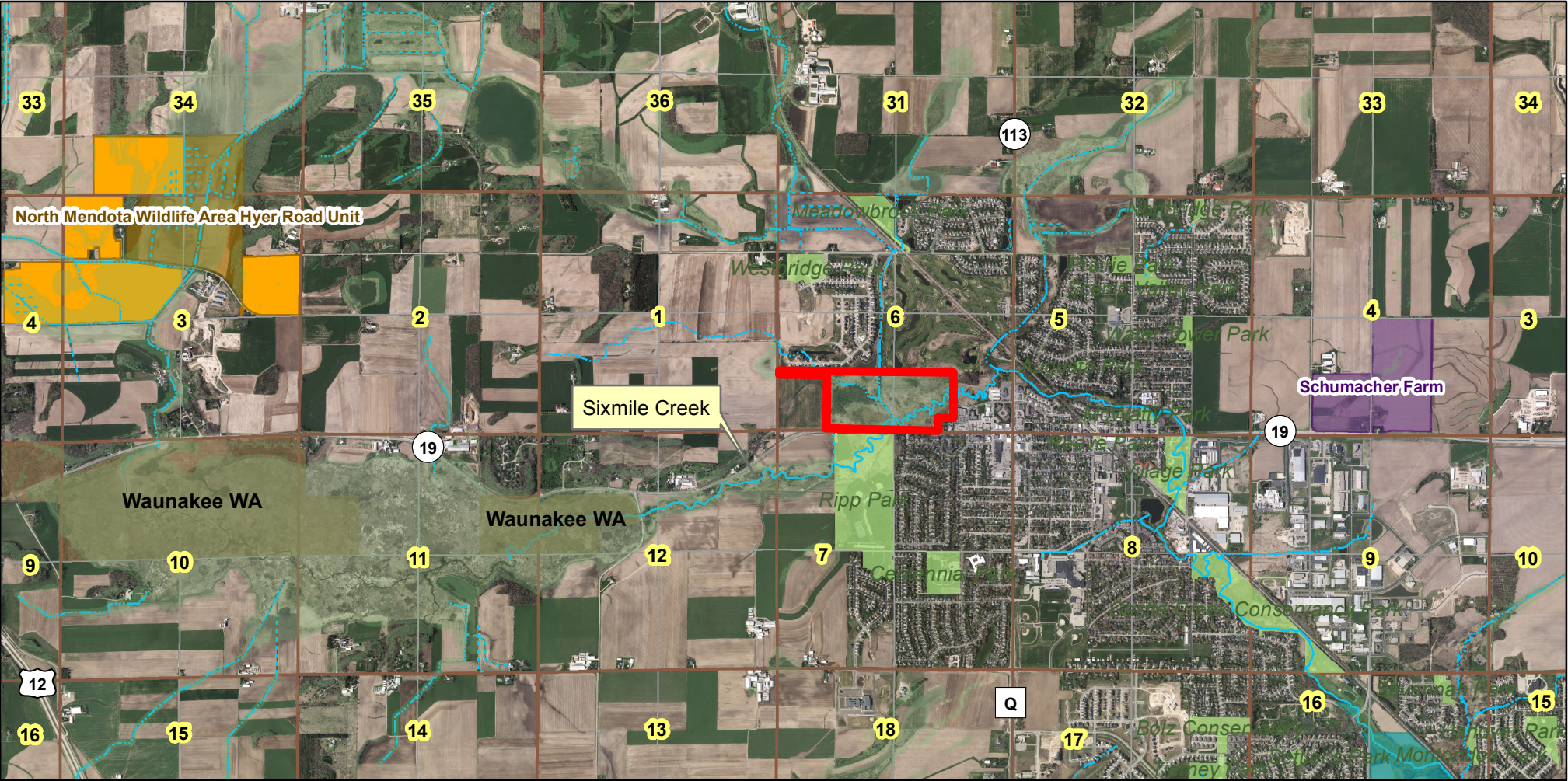
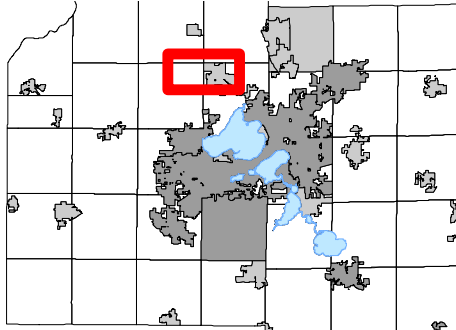
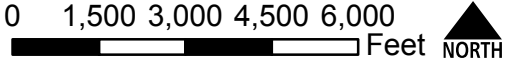


O'Malley Parcel, 84 acres, Town of Westport, Sixmile Creek Conservation Fund Grant application - Groundswell Conservancy



- Subject Parcel
- North Mendota NRA
- Municipal Parks/Public Land
- North Mendota WA
- Wauakee Wildlife Area (DNR)
- Environmental Protection Corridor
- Conservation Easement



Data Sources:
 Tax Parcels (3-2018)
 Digital orthophoto from April 2017.