

Notes to users:

This map is not an official FEMA Flood Insurance Rate Map (FIRM). FEMA Flood Zones from the currently effective Flood Insurance Study (FIS) for Dane County, effective 06/16/2016.

Updated detailed flood study and mapping completed by MARS-EOR in accordance with NR 216. Analysis approved by WDNR on 4/29/2020.

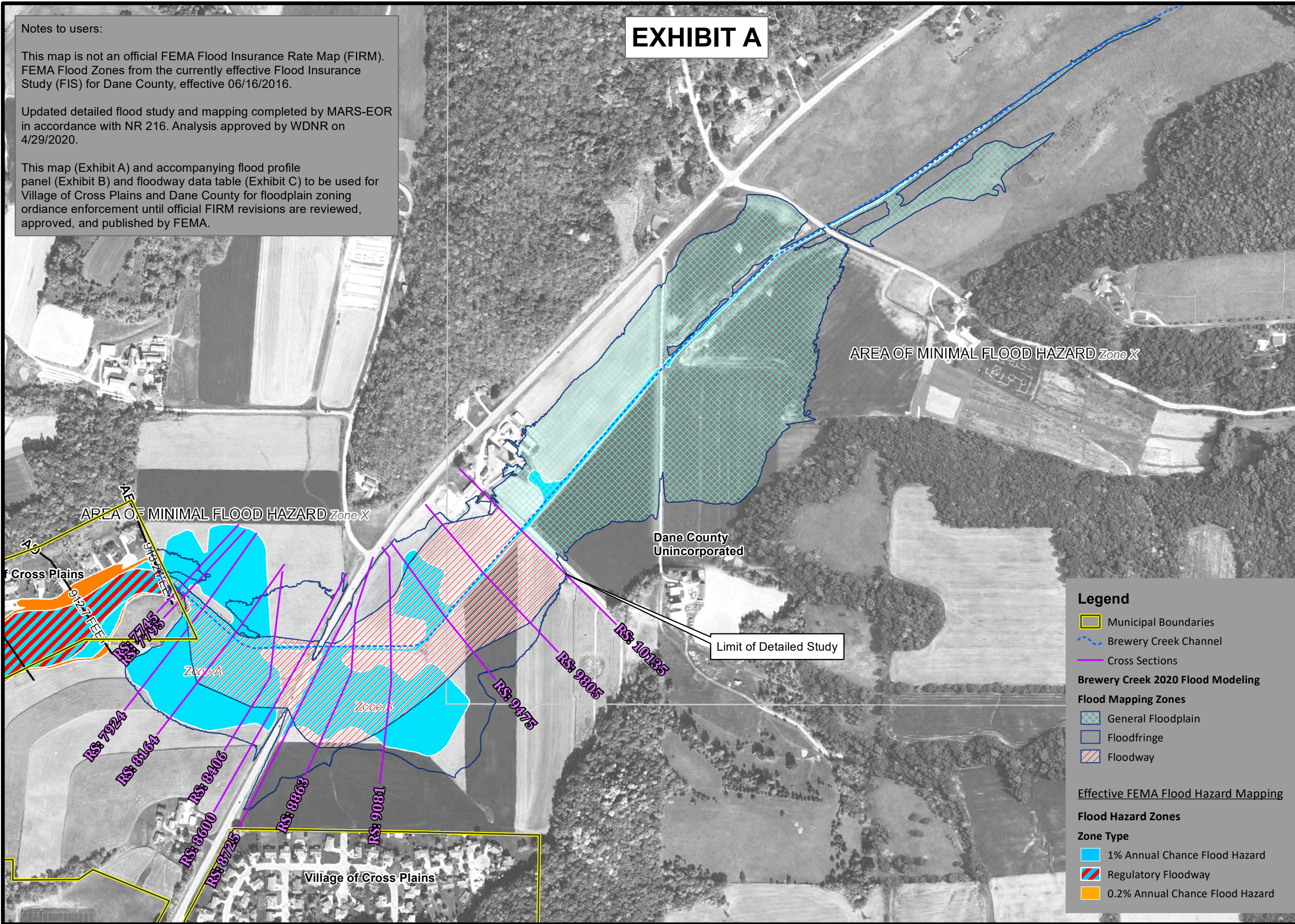
This map (Exhibit A) and accompanying flood profile panel (Exhibit B) and floodway data table (Exhibit C) to be used for Village of Cross Plains and Dane County for floodplain zoning ordinance enforcement until official FIRM revisions are reviewed, approved, and published by FEMA.

EXHIBIT A

Map produced on behalf of the Village of Cross Plains, WI and Dane County, WI by: EMMONS & OLIVIER RESOURCES, INC



DRAWN BY: RSS



Legend

- Municipal Boundaries
- Brewery Creek Channel
- Cross Sections

Brewery Creek 2020 Flood Modeling

Flood Mapping Zones

- General Floodplain
- Floodfringe
- Floodway

Effective FEMA Flood Hazard Mapping

Flood Hazard Zones

Zone Type

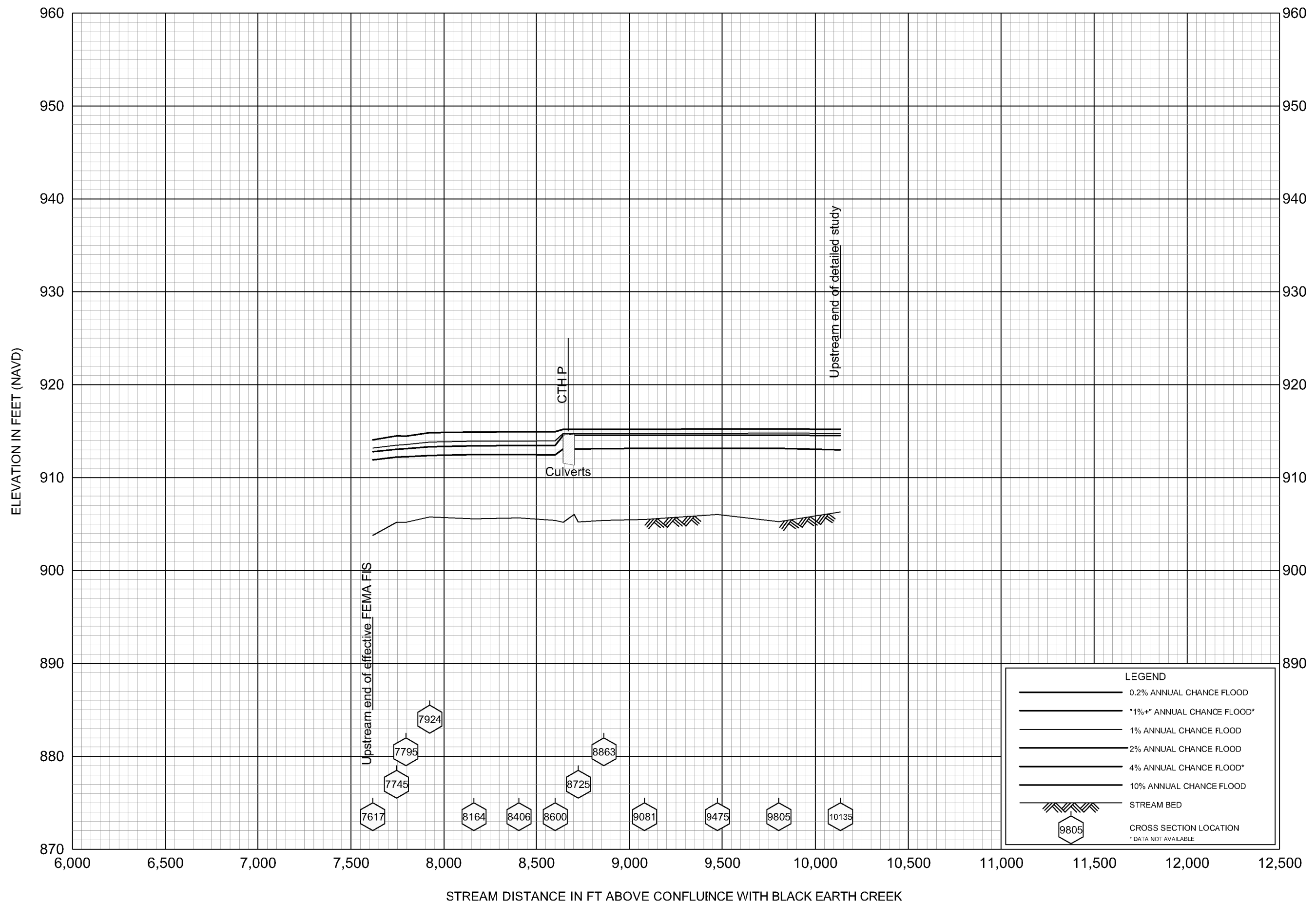
- 1% Annual Chance Flood Hazard
- Regulatory Floodway
- 0.2% Annual Chance Flood Hazard

BREWERY CREEK FLOODPLAIN MAPPING
2020 DETAILED FLOOD STUDY
Floodplain Zoning Overlay
Village of Cross Plains, WI
Dane County WI



0 125 250 500
SCALE
1 inch = 500 feet

SHEET NO. 1 of 1 DATE 05/05/2020



FLOOD PROFILES
BREWERY CREEK

DANE COUNTY, WI
AND INCORPORATED AREAS

LOCATION		FLOODWAY			1% ANNUAL CHANCE FLOOD WATER SURFACE ELEVATION (FEET NAVD88)			
CROSS SECTION	DISTANCE ¹	WIDTH (FEET)	SECTION AREA (SQ. FEET)	MEAN VELOCITY (FEET/SEC)	REGULATORY	WITHOUT FLOODWAY	WITH FLOODWAY	INCREASE
7745	7,745	63	328	4.0	913.5	913.5	913.5	0.0
7795	7,795	48	270	4.0	913.6	913.6	913.6	0.0
7924	7,924	184	1,987	2.0	913.8	913.8	913.8	0.0
8164	8,164	404	2,412	0.7	913.9	913.9	913.9	0.0
8406	8,406	438	2,596	0.6	913.9	913.9	913.9	0.0
8600	8,600	438	2,543	0.6	914.0	914.0	914.0	0.0
8725	8,725	493	4,135	0.4	914.8	914.8	914.8	0.0
8863	8,863	751	4,065	0.3	914.8	914.8	914.8	0.0
9081	9,081	736	3,211	0.3	914.8	914.8	914.8	0.0
9475	9,475	626	2,455	0.4	914.8	914.8	914.8	0.0
9805	9,805	760	2,653	0.4	914.8	914.8	914.8	0.0
10135	10,135	553	785	1.2	914.8	914.8	914.8	0.0

¹ Distances are measured in feet above confluence with Black Earth Creek

EXHIBIT C

**Dane County, Wisconsin
AND INCORPORATED AREAS**

FLOODWAY DATA

FLOODING SOURCE: Brewery Creek