

# Final Plat - Baker's Woods

## Village of Belleville

Plat consists of 40 lots, 1 outlot, 25.8 acres.

Parks - No parkland shown as dedicated within this plat.

Parkways - none

Expressways - N/A

Major Highways - STH 69/92 to the south.

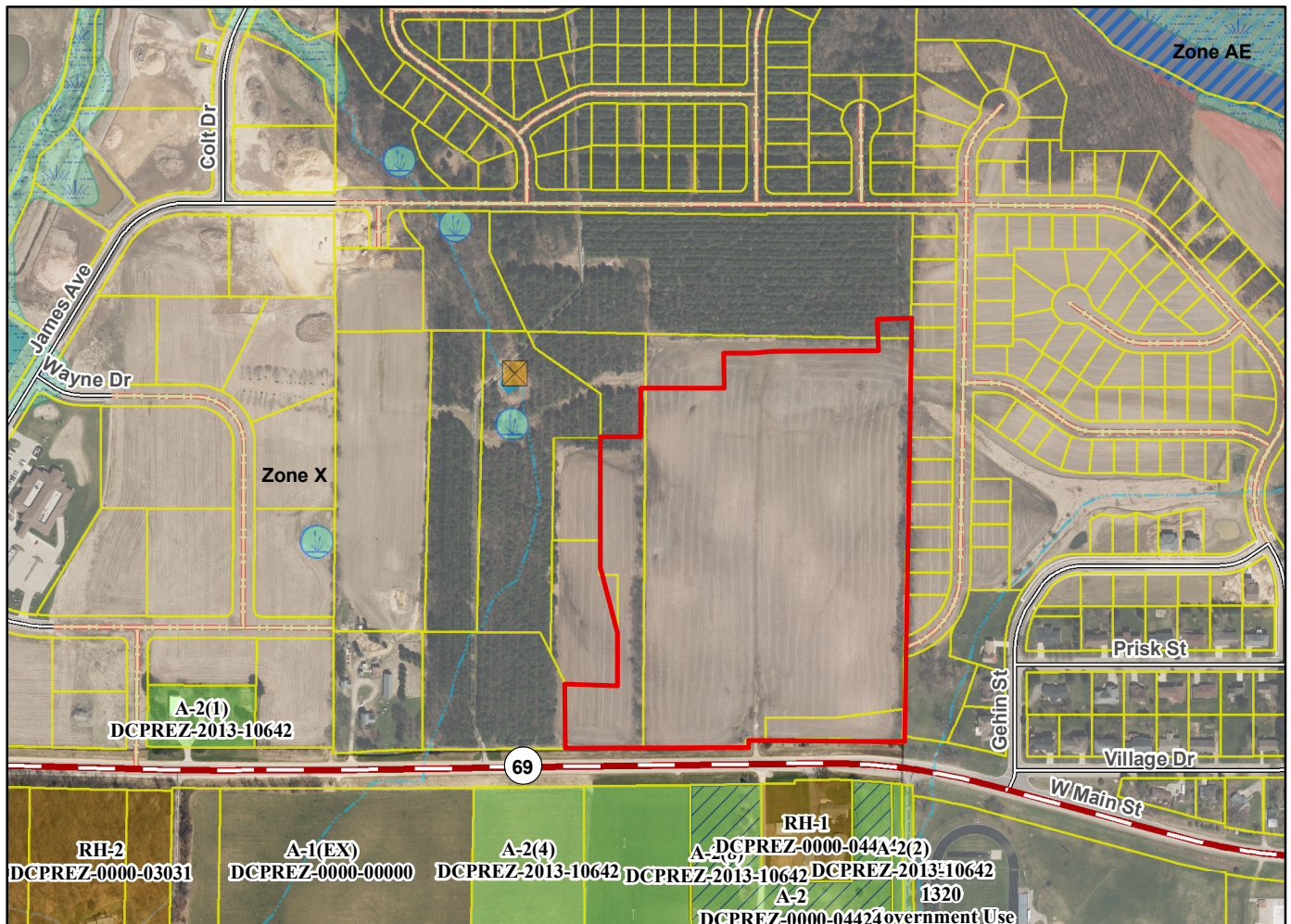
Airports - Dane County Regional

Drainage Channels - Drainage arrows are shown which indicate the direction of stormwater drainage.

Schools - established

Other Development -

Plats of subdivisions located in all other incorporated municipalities shall be submitted to the committee, as provided by section 236.12(2)(b) of the Wis. Stats., for the purpose of determining whether the committee has any objection to the plat. The basis for any objection to any such plat shall be that the plat conflicts with parks, parkways, expressways, major highways, airports, drainage channels, schools or other planned public developments.



Motion to certify with no objections: \_\_\_\_\_, Second: \_\_\_\_\_ Vote: \_\_\_\_\_