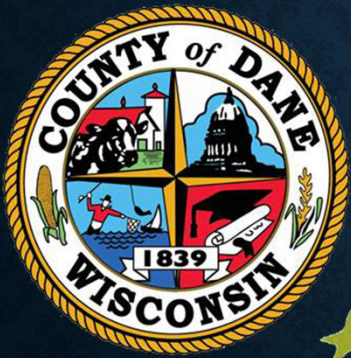


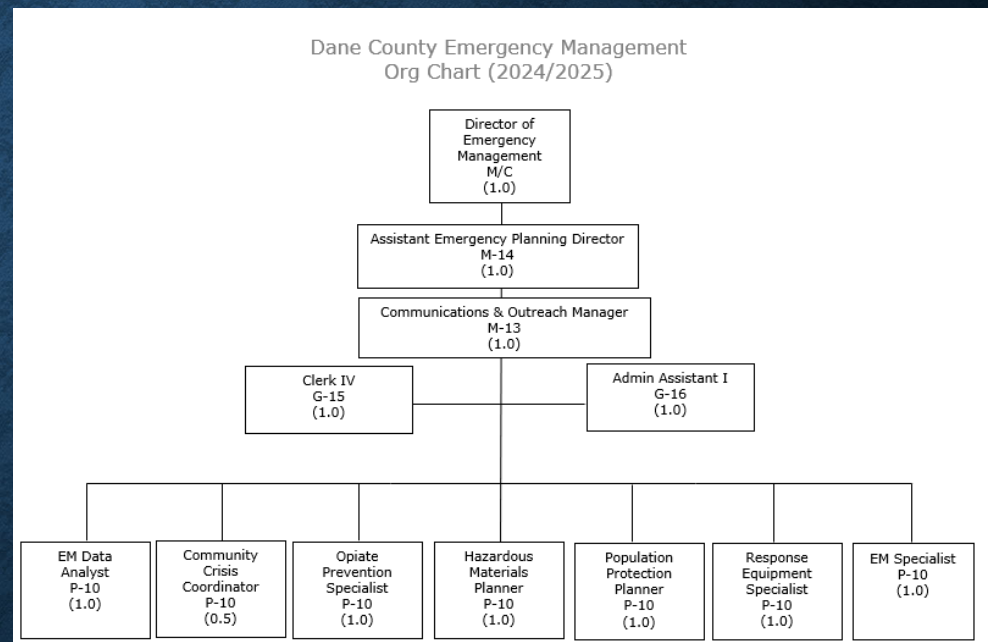
DANE COUNTY EMERGENCY MANAGEMENT



ORGANIZATIONAL CHART

Dane County Emergency Management's mission is to support and strengthen an effective Emergency Management System with our stakeholders to protect the lives, property, and environment of residents and visitors of Dane County.

#1 Goal
Protect Life, Property and the Environment



OUR NEW LOCATION!



5492 KAPEC WAY FITCHBURG

EM IN WISCONSIN

- WI § 323 – Emergency Management -
<https://docs.legis.wisconsin.gov/statutes/statutes/323>
- All 72 counties and 11 tribes have emergency managers with funding support through FEMA's Emergency Management Performance Grant (EMPG)
- WI Emergency Management (WEM) is a division of the Dept. of Military Affairs

WI § 323 HIGHLIGHTS

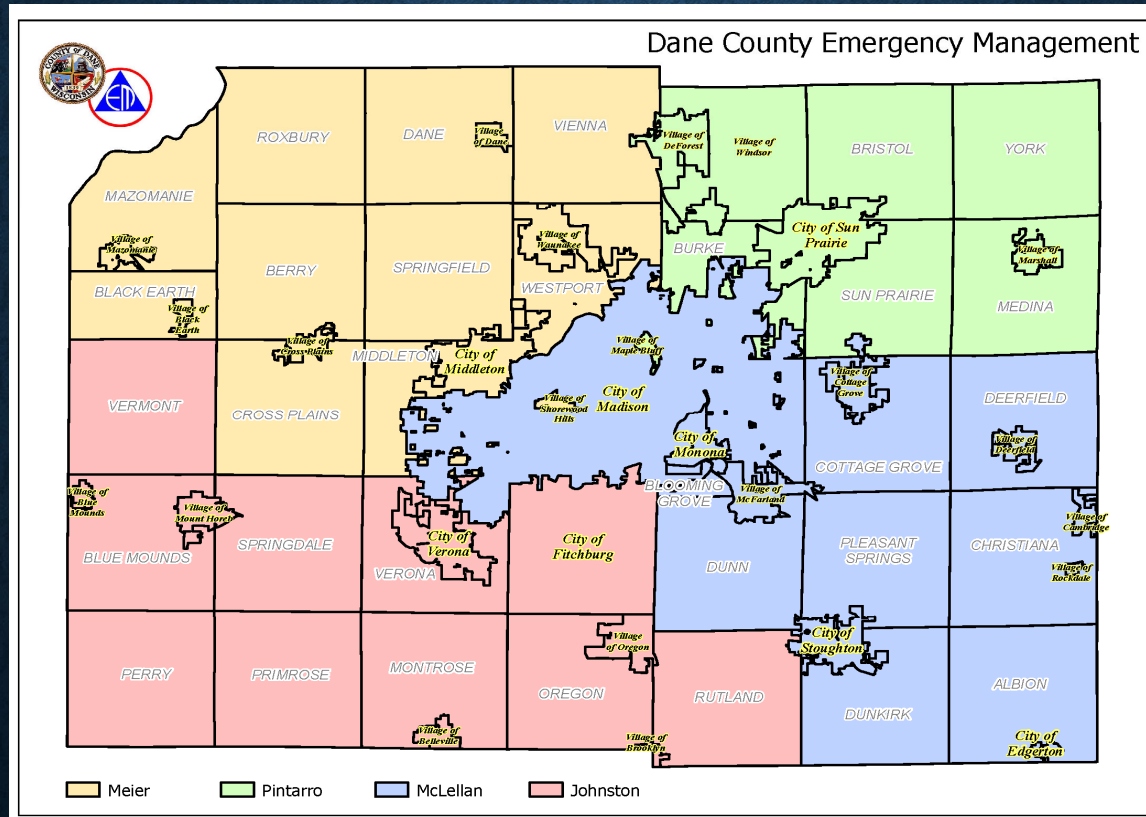
WI § 323.02(8) – “Emergency Management” means all measures undertaken by or on behalf of the state and its subdivisions to do any of the following:

- (a) Prepare for and minimize the effect of a disaster or the imminent threat of a disaster.
- (b) Make repairs to or restore infrastructure or critical systems that are destroyed or damaged by a disaster

WI § 323 HIGHLIGHTS

- 323.02(15) – “Local unit of government” means a county, city, village, or town.
- 323.11 – Local declaration of emergency
- 323.14 – Local Government; duties and powers
- 323.15 – Heads of emergency management; duties and powers

DC QUADRANTS



LIAISON GOALS

Delivering training and support to ensure all municipalities:

- Have an adopted local EOP
- Ensure support for both citizen and first responder needs in emergency conditions
- Ensure emergency management responsibilities are met per state statute
- Sustainment of local emergency management programs.

- Planning
- Hazmat
- EMS

DIVISIONS



PLANNING DIVISION



PLANNING DIVISION

- Emergency Notification & Warning
- Public Information and Education
- Communication Support
- Emergency Planning
- Training & Exercising
- Public Private Partnerships

EMS DIVISION





EMS DIVISION

“COORDINATION AND SUPPORT”

- Data Analysis
- Mass Casualty planning
- Active threat preparedness
- Liaison with healthcare partners
- Bariatric and reserve ambulance
- Mental Health support for responders
- Cardiac Arrest Care
- Opiate Prevention / Harm Reduction
- Fall prevention
- 911 coordination
- Medical Advisors
- Centralized Medication Distribution

HAZMAT DIVISION



HAZMAT DIVISION

- EPCRA – Emergency Planning and Community Right-to-Know Act
- Oversight of EPCRA Administrative Requirements and LEPC (Local Emergency Planning Commission)
- Facility Off-Site Plans for Extremely Hazardous Chemicals (EHS) that exceed threshold planning quantities
- Outreach and Education

EMERGENCY MANAGEMENT

Five mission areas

Prevention • Protection • Mitigation • Response • Recovery

RESPONSE - RECOVERY



EOC
Command Post
Damage Assessment



RECOVERY ROLE

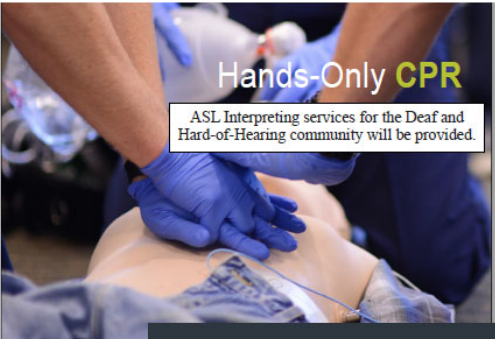
- Disaster Declarations
- Damage Assessments
 - Preliminary Damage Assessment (UDSR within 72 hours)
- Assistance –
 - Individual Assistance (IA) Grants and other aid
 - Public Assistance (PA)
 - Wisconsin Disaster Fund (WDF)
- Mitigation Projects

CONTINUED GOALS

- School Safety collaboration
- Responder Mental Health
- Community Mental Health and Crisis Support
- Public Safety Readiness to respond
- Local Municipal Readiness – cyber, elections, etc.
- Public and Private Partnerships
- Whole community Approach
- Outreach




LANGUAGE ACCESS

Outreach . Readiness . Trust . Preparedness . Access . Diversity
Special Needs . Culture . Equity



Hands-Only CPR

ASL Interpreting services for the Deaf and Hard-of-Hearing community will be provided.




IN 2022, PEOPLE WHO RECEIVED BYSTANDER CPR IN DANE COUNTY HAD OVER TWICE THE SURVIVAL RATE OF THOSE WHO DID NOT.

Fitch-Rona EMS District will be hosting a Compression-Only/AED course at the Fitchburg Public Library at 5630 Lacy Rd, Fitchburg, WI 535711.

Tuesday, September 19th, 2023 from 6 pm – 7:30 pm

The class is free.
Registration is encouraged, but not required.

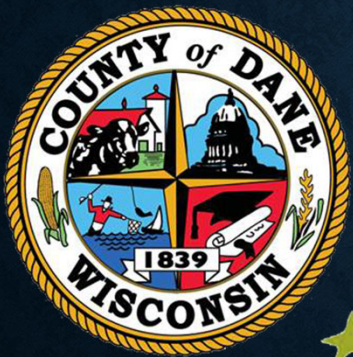
Scan the QR code to sign up!



SCAN ME

Supported by Fitch-Rona EMS District, Dane County Emergency Management, and the City of Fitchburg





QUESTIONS

Director Charles Tubbs Sr.

Tubbs.Charles2@danecounty.gov

Assistant Director Carrie Meier

meier.carrie@danecounty.gov