

# Final Plat - Terravessa

## City of Fitchburg

Plat consists of 198 lots, 253 acres.

Parks - OL 2, 34, 36, 37 dedicated to the public for park purposes.

Parkways - N/A

Expressways - N/A

Major Highways - CTH MM to the west.

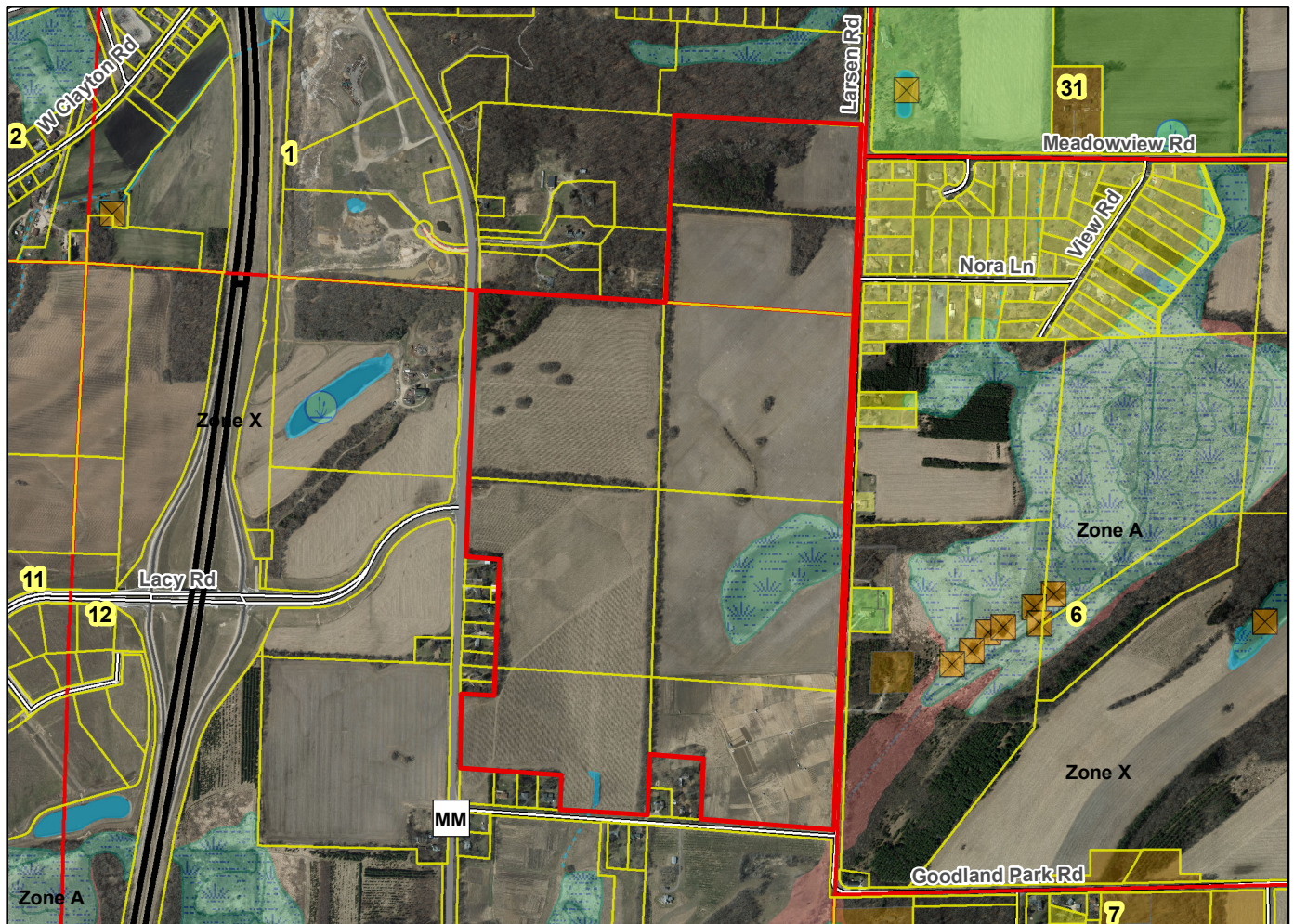
Airports - Dane County Regional

Drainage Channels - Arrows as shown indicate drainage flow.

Schools - established.

Other Development - Various outlots reserved for future use or dedicated to the public for stormwater management, wetland preservation, open space and pedestrian/bike path.

Plats of subdivisions located in all other incorporated municipalities shall be submitted to the committee, as provided by section 236.12(2)(b) of the Wis. Stats., for the purpose of determining whether the committee has any objection to the plat. The basis for any objection to any such plat shall be that the plat conflicts with parks, parkways, expressways, major highways, airports, drainage channels, schools or other planned public developments.



Motion to certify with no objections: \_\_\_\_\_, Second: \_\_\_\_\_ Vote: \_\_\_\_\_