

Final Plat - West Drumlin

Village of Cottage Grove

Plat consists of 9 lots, 2.6 acres.

Parks - No parks associated with this plat.

Parkways - none

Expressways - N/A

Major Highways - CTH BB to the south.

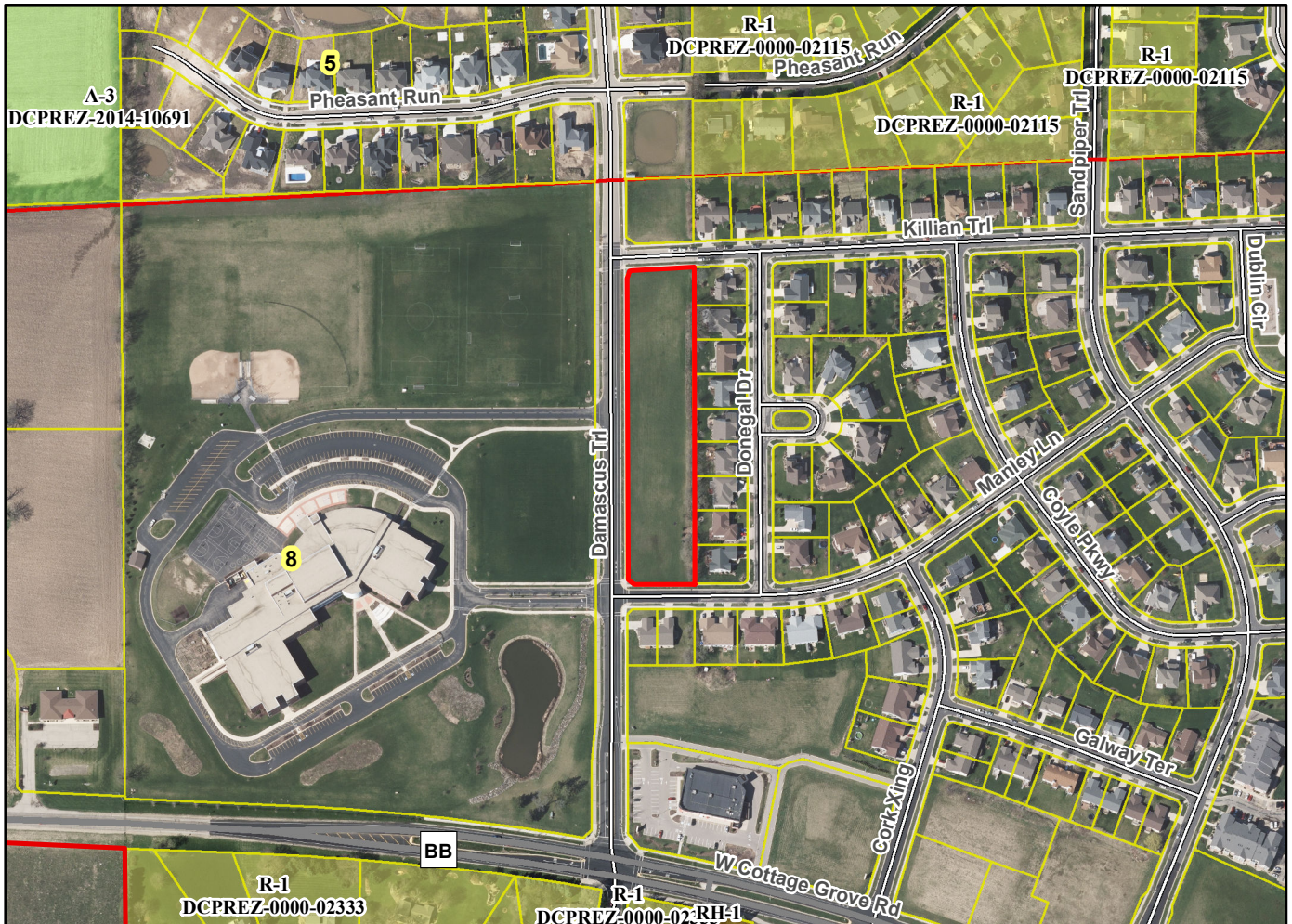
Airports - Dane County Regional

Drainage Channels - Drainage arrows shown indicating drainage flows.

Schools - established (across the street)

Other Development - N/A

Plats of subdivisions located in all other incorporated municipalities shall be submitted to the committee, as provided by section 236.12(2)(b) of the Wis. Stats., for the purpose of determining whether the committee has any objection to the plat. The basis for any objection to any such plat shall be that the plat conflicts with parks, parkways, expressways, major highways, airports, drainage channels, schools or other planned public developments.



Motion to certify with no objections: _____, Second: _____ Vote: _____