

Final Plat - Vang Homesites

City of Madison

Plat consists of 11 lots, 2 outlost, 4.43 acres.

Parks - No parkland shown.

Parkways - none

Expressways - N/A

Major Highways - Portage Rd. and interstate corridor to the east.

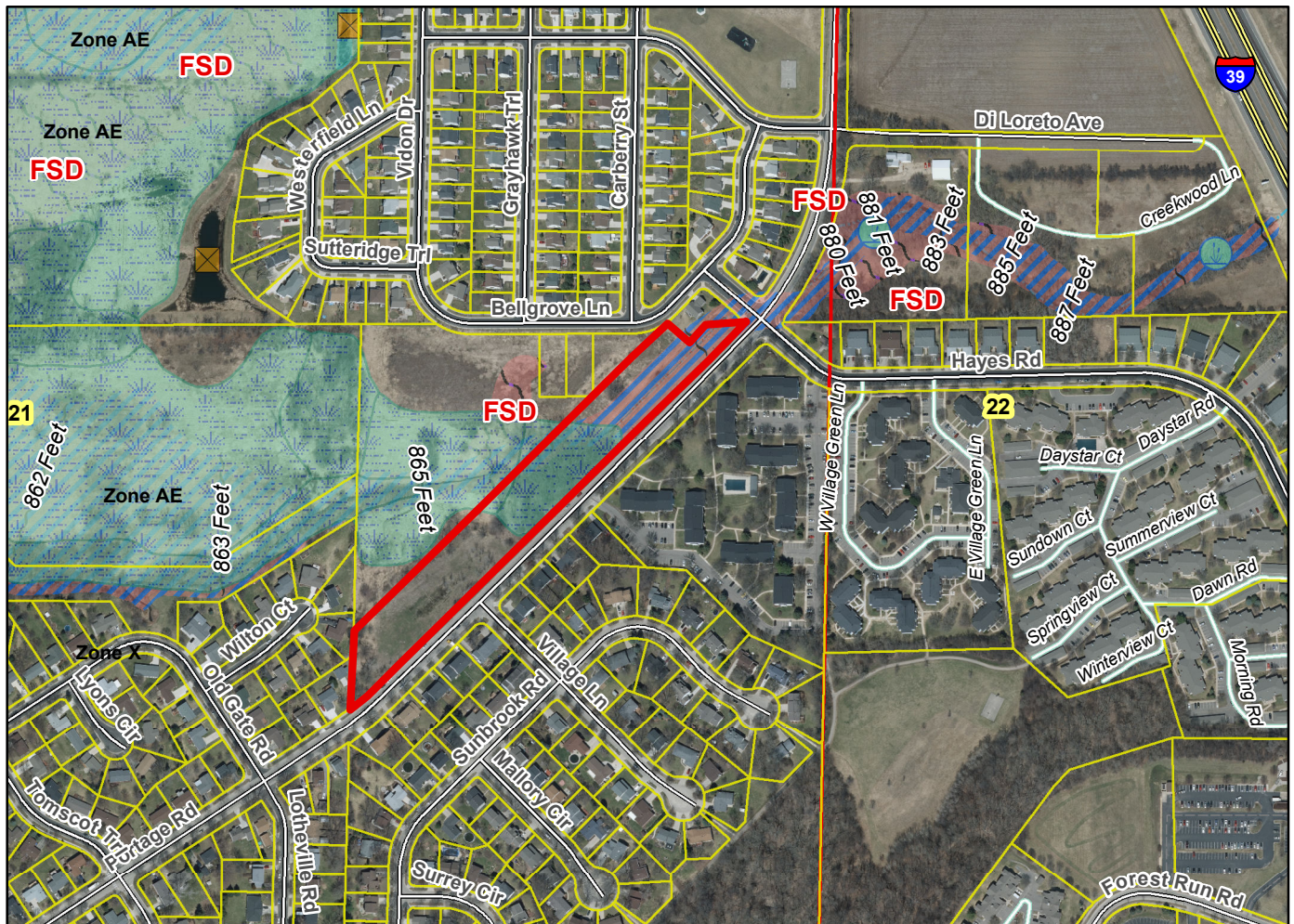
Airports - Dane County Regional

Drainage Channels - All lots are subject to public easements for drainage purposes.

Schools - established

Other Development - OL 2 is dedicated to the public for public storm water management.

Plats of subdivisions located in all other incorporated municipalities shall be submitted to the committee, as provided by section 236.12(2)(b) of the Wis. Stats., for the purpose of determining whether the committee has any objection to the plat. The basis for any objection to any such plat shall be that the plat conflicts with parks, parkways, expressways, major highways, airports, drainage channels, schools or other planned public developments.



Motion to certify with no objections: _____, Second: _____ Vote: _____